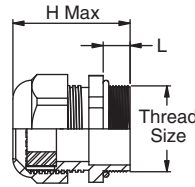
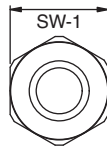
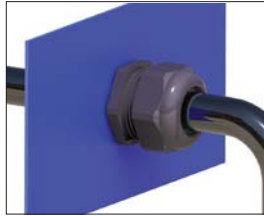


CABLE GLANDS



CG-PG PG Cable Gland



Specifications:

- Material: Body and Nut: UL94 V-2 Nylon 6
Sealing Gland: CR / NBR
O-Ring: NBR
- Color: Black
- Material: Optional CGLN Locking Nut:
UL94 V-2 Glass Filled Nylon 6
- Color: Black
- Operating temperature: -4°F - 212°F (-20°C -100°C)

Optional Parts

Item No.	Thread Size	Locking Nuts				Pack Qty.	Bulk Pack Qty.
		Across Flats		Thickness			
		In	mm	In	mm		
CGLN-PG7-BK	PG7	0.748	19.0	0.197	5.0	1	100
CGLN-PG9-BK	PG9	0.866	22.0	0.197	5.0	1	100
CGLN-PG11-BK	PG11	0.945	24.0	0.197	5.0	1	100
CGLN-PG13.5-BK	PG13.5	1.063	27.0	0.236	6.0	1	100
CGLN-PG16-BK	PG16	1.181	30.0	0.236	6.0	1	100
CGLN-PG21-BK	PG21	1.417	36.0	0.276	7.0	1	100
CGLN-PG29-BK	PG29	1.811	46.0	0.276	7.0	1	100
CGLN-PG36-BK	PG36	2.362	60.0	0.315	8.0	1	50

Features:

- Protection Class: IP68 - 5 Bar
- Designed for superior sealing; no O-ring needed for smaller sizes to meet IP68 rating

Item No.	UL Approval	Cable Ø Range Min		Cable Ø Range Max		Thread Size	Mounting Hole		L		SW-1		H Max Ref.		Pack Qty.	Bulk Pack Qty.
		In	mm	In	mm		In	mm	In	mm	In	mm	In	mm		
CG-PG7-1-BK	RU	0.079	2.0	0.197	5.0	PG7	0.500	12.7	0.315	8.0	0.591	15.0	1.201	30.5	1	100
CG-PG7-2-BK	RU	0.118	3.0	0.256	6.5	PG7	0.500	12.7	0.315	8.0	0.591	15.0	1.201	30.5	1	100
CG-PG9-1-BK	RU	0.079	2.0	0.236	6.0	PG9	0.606	15.4	0.315	8.0	0.748	19.0	1.339	34.0	1	100
CG-PG9-2-BK	RU	0.157	4.0	0.315	8.0	PG9	0.606	15.4	0.315	8.0	0.748	19.0	1.339	34.0	1	100
CG-PG11-1-BK	RU	0.118	3.0	0.276	7.0	PG11	0.740	18.8	0.315	8.0	0.866	22.0	1.457	37.0	1	100
CG-PG11-2-BK	RU	0.197	5.0	0.394	10.0	PG11	0.740	18.8	0.315	8.0	0.866	22.0	1.457	37.0	1	100
CG-PG13.5-1-BK	RU	0.236	6.0	0.472	12.0	PG13.5	0.815	20.7	0.354	9.0	0.945	24.0	1.535	39.0	1	100
CG-PG16-1-BK	RU	0.394	10.0	0.551	14.0	PG16	0.898	22.8	0.394	10.0	1.063	27.0	1.673	42.5	1	50
CG-PG21-1-BK	RU	0.236	6.0	0.630	16.0	PG21	1.126	28.6	0.433	11.0	1.299	33.0	1.870	47.5	1	50
CG-PG21-2-BK	RU	0.512	13.0	0.709	18.0	PG21	1.126	28.6	0.433	11.0	1.299	33.0	1.870	47.5	1	50
CG-PG29-1-BK	RU	0.472	12.0	0.787	20.0	PG29	1.472	37.4	0.433	11.0	1.654	42.0	2.087	53.0	1	25
CG-PG36-1-BK	RU	0.787	20.0	1.024	26.0	PG36	1.870	47.5	0.512	13.0	2.087	53.0	2.402	61.0	1	10
CG-PG36-2-BK	RU	0.866	22.0	1.260	32.0	PG36	1.870	47.5	0.512	13.0	2.087	53.0	2.402	61.0	1	10

CGM Metric Cable Gland

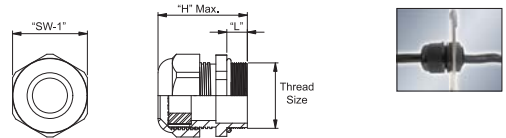


Specifications:

- Material: UL 94V-2 Nylon 6/6
- Colors: See Table
- Temperature Range: Working -40°F to 221°F (-40°C to 105°C) Intermittent up to 300°F (149°C)

Features:

- Parts designed with AVC – Essentra's variable clamping ranges to fit a wide range of diameters
- IP 68 rated protection: 5 bar
- Provides dust & water-tight performance and strain relief
- EPDM gasket & lock nut are sold separately
- For best results select a gland with the smallest maximum clamping range for your application



Item No.		Mounting Hole		Mounting Thread L		Flat Sealing Nut F		Variable Clamping Range (Max/Min)				Pack Qty.	Bulk Pack Qty.	
Black	Silver Grey	In	mm	In	mm	In	mm	In	mm	In	mm			
CGM150B	CGM150G	M12 X 1.5	0.472	12.0	0.354	9.00	0.748	19.0	0.307	0.177	7.80	4.50	1	50
CGM250B	CGM250G	M16 X 1.5	0.630	16.0	0.394	10.0	0.748	19.0	0.307	0.177	7.80	4.50	1	50
CGM325B	CGM325G	M20 X 1.5	0.787	20.0	0.394	10.0	0.866	22.0	0.394	0.236	10.0	6.00	1	50
CGM350B	CGM350G	M20 X 1.5	0.787	20.0	0.394	10.0	1.063	27.0	0.551	0.354	14.0	9.00	1	50
CGM425B	CGM425G	M25 X 1.5	0.984	25.0	0.472	12.0	1.063	27.0	0.551	0.354	14.0	9.00	1	50
CGM450B	CGM450G	M25 X 1.5	0.984	25.0	0.591	15.0	1.299	33.0	0.709	0.551	18.0	14.0	1	50
CGM550B	CGM550G	M32 X 1.5	1.260	32.0	0.591	15.0	1.654	42.0	0.866	0.630	22.0	16.0	1	10

Optional Parts

LNM – Metric Locknuts						
Locknut Part Number		Flats Locknut		Pack Qty.	Bulk Pack Qty.	
Black	Silver Gray	Thread Size	In			
LNM100B	LNM100G	M12 X 1.5	0.709	18	1	50
LNM200B	LNM200G	M16 X 1.5	0.866	22	1	50
LNM300B	LNM300G	M20 X 1.5	0.945	24	1	50
LNM400B	LNM400G	M25 X 1.5	1.299	33	1	50
LNM500B	LNM500G	M32 X 1.5	1.614	41	1	10

CGMW – Sealing Washers			
Sealing Gasket Part Number	Thread Size	Pack Qty.	Bulk Pack Qty.
CGMW100A	M12	1	50
CGMW200A	M16	1	50
CGMW300A	M20	1	50
CGMW400A	M25	1	50
CGMW500A	M32	1	10