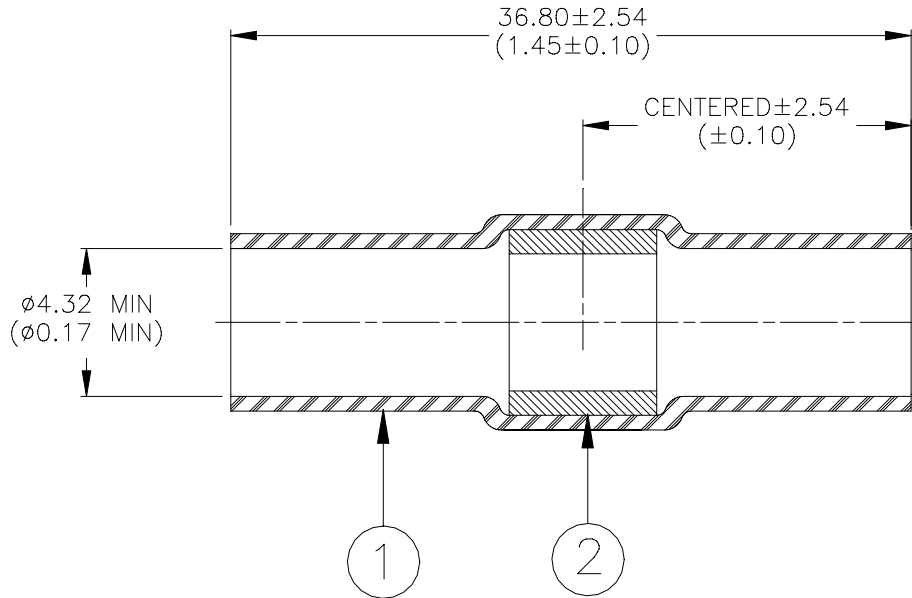


SPECIFICATION CONTROL DRAWING



MATERIALS

1. INSULATION SLEEVE: Heat-shrinkable, transparent blue, radiation cross-linked modified polyvinylidene fluoride.
2. SOLDER PREFORM WITH FLUX:
 SOLDER: TYPE Sn63 per ANSI J-STD-006.
 FLUX: TYPE ROM1 per ANSI-J-STD-004.

APPLICATION

1. This part is designed to make a non-sealed in-line splice in conductors.
 Splice Criteria:
 Conductor Type: Bare or tin plated copper.
 Circular Mil Range: 4,800 to 9,000.
 Insulation Diameter: 2.41 - 4.32 (0.095 to 0.170).
2. Wires are to be stripped 16.5 - 19.1 (0.650 to 0.750) and overlapped under the solder preform.
3. Part may be installed with Raychem hot air or infrared heaters.
4. Part will meet requirements of Raychem Specification RT-1404.

tyco <i>Electronics</i>	Tyco Electronics Corporation 300 Constitutional Drive Menlo Park, CA 94025 USA	RAYCHEM	TITLE: SOLDERSLEEVE WIRE SPLICE, IN-LINE, NON SEALED				
UNLESS OTHERWISE SPECIFIED DIMENSIONS ARE IN MILLIMETERS. INCHES DIMENSIONS ARE BETWEEN BRACKETS.			DOCUMENT NO.: D-110-0101				
TOLERANCES: 0.00 N/A 0.0 N/A 0 N/A	ANGLES: N/A ROUGHNESS IN MICRON	Tyco reserves the right to amend this drawing at any time. Users should evaluate the suitability of the product for their application.		DATE: 06-July-00	DOC ISSUE: 1		
DRAWN BY: M. FORONDA	CAGE CODE: 06090	REPLACES: N/A	DCR NUMBER: D990721	PROD. REV. A	SCALE: None	SIZE: A	SHEET: 1 of 1

If this document is printed it becomes uncontrolled. Check for the latest revision.