

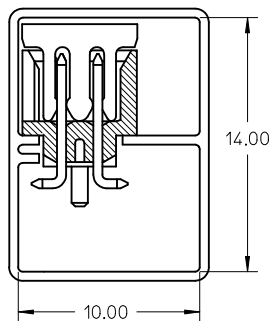
CKT SIZE	A	B	C	D	E	F
4	6.65	4.85	2.00	-----	-----	5.00
6	8.65	6.85	4.00	-----	2.00	7.00
8	10.65	8.85	6.00	-----	4.00	9.00
10	12.65	10.85	8.00	-----	6.00	11.00
12	14.65	12.85	10.00	-----	8.00	13.00
14	16.65	14.85	12.00	8.00	10.00	15.00
16	18.65	16.85	14.00	10.00	12.00	17.00
18	20.65	18.85	16.00	12.00	14.00	19.00
20	22.65	20.85	18.00	14.00	16.00	21.00
22	24.65	22.85	20.00	16.00	18.00	23.00
24	26.65	24.85	22.00	18.00	20.00	25.00
26	28.65	26.85	24.00	20.00	22.00	27.00
28	30.65	28.85	26.00	22.00	24.00	29.00
30	32.65	30.85	28.00	24.00	26.00	31.00
32	34.65	32.85	30.00	26.00	28.00	33.00
34	36.65	34.85	32.00	28.00	30.00	35.00
36	38.65	36.85	34.00	30.00	32.00	37.00
38	40.65	38.85	36.00	32.00	34.00	39.00
40	42.65	40.85	38.00	34.00	36.00	41.00
42	44.65	42.85	40.00	36.00	38.00	43.00
44	46.65	44.85	42.00	38.00	40.00	45.00
46	48.65	46.85	44.00	40.00	42.00	47.00
48	50.65	48.85	46.00	42.00	44.00	49.00
50	52.65	50.85	48.00	44.00	46.00	51.00

- NOTES:
- FOR ILLUSTRATION PURPOSES, 20 CIRCUIT SIZE WAFER IS SHOWN.
  - MATERIAL :  
HOUSING & CAP : 30% G.F., NYLON 46, UL94V-0, COLOR BLACK.  
PIN : 0.50MM SQ.PHOSPHOR BRONZE.
  - PLATING : SEE SHEET 4 FOR PART NUMBER LEGEND
  - PRODUCT SPECIFICATION PS-87831-027 APPLIES.
  - COPLANARITY IS TO BE MEASURED BY RESTING THE SOLDER TAIL ON A GAUGE SURFACE.
  - NO SIDE LOCKING SLOT FROM 4 TO 12 CKT SIZE.
  - CKT 4 & 6 HAS NO IDENTIFICATION TAG.
  - POSITION OF CAP TO BE LOCATED AT CENTER OF DIMENSION 'A' REGARDLESS OF CIRCUIT SIZE.
  - TOP SURFACE OF CAP TO BE FLAT FOR THE PURPOSE OF PICK-&-PLACE BY VACUUM SUCTION NOZZLE.
  - THIS HEADER MATES WITH MOLEX:
    - CRIMP RECEPTACLE HOUSING, 51110 SERIES WITH CRIMP TERMINAL, 50394 SERIES.
    - 2MM MILLIGRID DUAL ROW IDT, 87568 SERIES.
  - NO CENTRE POLARIZATION SLOT FOR CKT SIZE 4 AND 6.
  - PARTS SHALL BE PACKED IN MOISTURE BARRIER BAG.

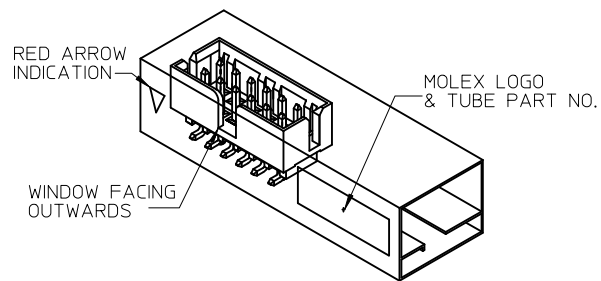
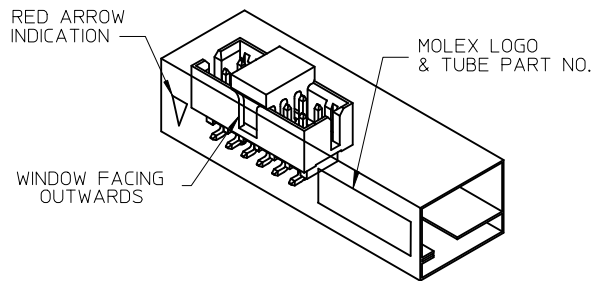
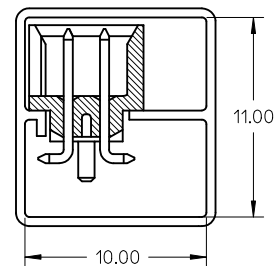
CORRECT PART ILLUSTRATION EC NO: S2012-0647 DRWN:SKANG CHKD:ATSEE APPR:MLONG	QUALITY SYMBOLS ▽=0 ∇=0	GENERAL TOLERANCES (UNLESS SPECIFIED)		DIMENSION STYLE	SCALE	DESIGN UNITS	THIRD ANGLE PROJECTION	
				MM ONLY	NTS	METRIC		
			mm	INCH	DRAWN BY	DATE	TITLE	
		4 PLACES	± ---	± ---	ATSEE	2003/10/14	MGRID, SHROUDED HEADER SMT, W/PEGS/CAP FOR PICK & PLACE IN TUBE AND T&R	
			CHECKED BY	DATE				
3 PLACES	± ---	± ---	KCLING	2003/11/07				
2 PLACES	± 0.2	± ---	APPROVED BY	DATE				
1 PLACE	± ---	± ---	SKTOH	2003/11/07				
		ANGULAR ± 3 °	MATERIAL NO.	DOCUMENT NO.				
			SEE TABLE					
			SIZE A3	THIS DRAWING CONTAINS INFORMATION THAT IS PROPRIETARY TO MOLEX INCORPORATED AND SHOULD NOT BE USED WITHOUT WRITTEN PERMISSION				

TUBE PACKAGING

WITH CAP IN TUBE



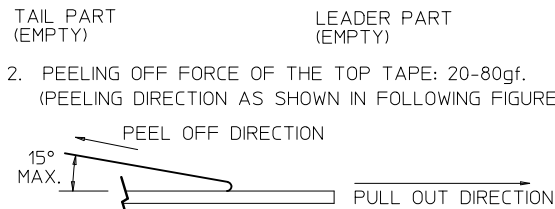
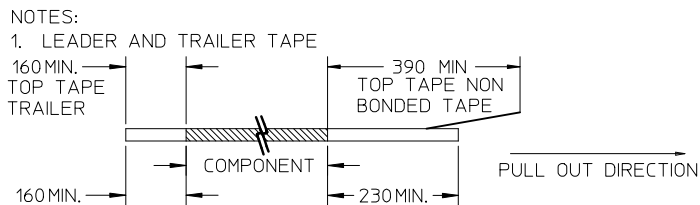
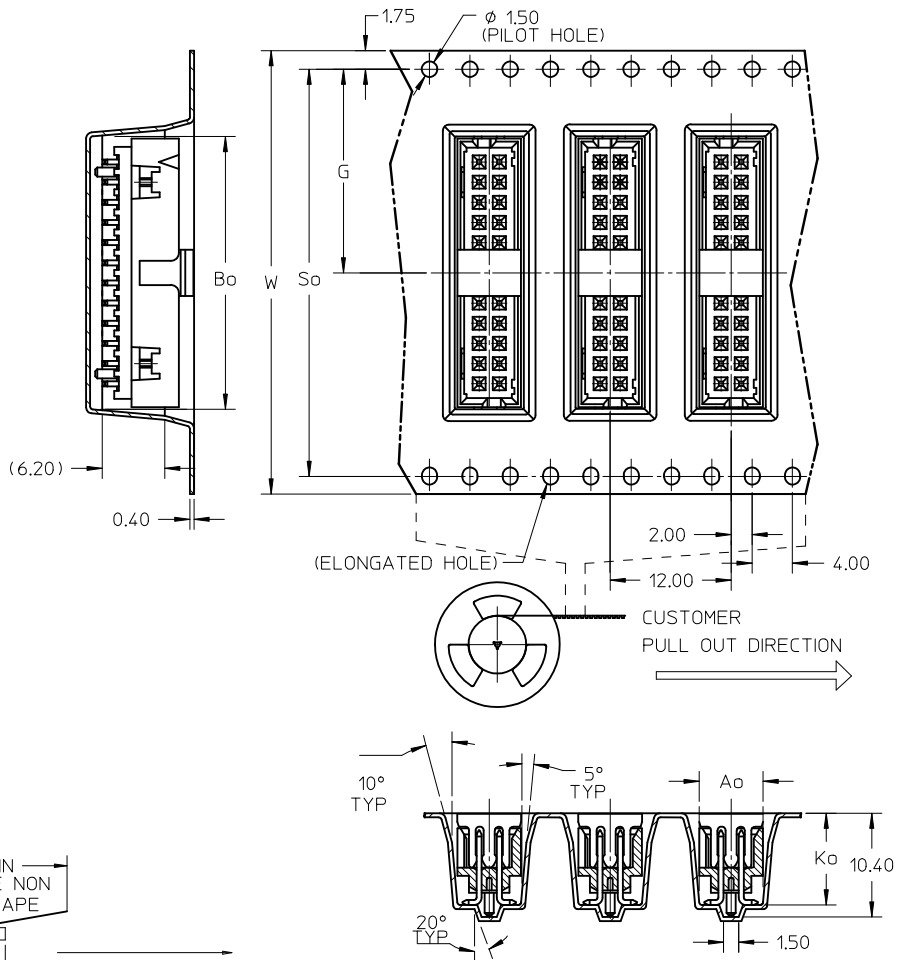
WITHOUT CAP IN TUBE



REF : ORIENTATION OF PART IN TUBE  
(FOR THE REFERENCE OF PART/TUBE ASSEMBLY)

CORRECT PART ILLUSTRATION EC NO: S2012-0647 DRWN:SKANG 2012/02/22 CHKD:ATSEE 2012/04/30 APPR:MLONG 2012/05/03	DESCRIPTION REV	QUALITY SYMBOLS	GENERAL TOLERANCES (UNLESS SPECIFIED)		DIMENSION STYLE MM ONLY		SCALE NTS	DESIGN UNITS METRIC	THIRD ANGLE PROJECTION			
		$\nabla=0$ $\sphericalangle=0$	mm	INCH	DRAWN BY ATSEE	DATE 2003/10/14	TITLE MGRID, SHROUDED HEADER SMT, W/PEGS/CAP FOR PICK & PLACE IN TUBE AND T&R					
			4 PLACES	± ---	± ---	CHECKED BY KCLING	DATE 2003/11/07	MATERIAL NO. SKTOH 2003/11/07				
			3 PLACES	± ---	± ---	APPROVED BY SKTOH		DATE 2003/11/07	DOCUMENT NO. SD-87832-006		SHEET NO. 2 OF 4	
A13			2 PLACES	± 0.2	± ---	DRAFT WHERE APPLICABLE MUST REMAIN WITHIN DIMENSIONS						
			1 PLACE	± ---	± ---	SIZE A3 THIS DRAWING CONTAINS INFORMATION THAT IS PROPRIETARY TO MOLEX INCORPORATED AND SHOULD NOT BE USED WITHOUT WRITTEN PERMISSION						
			ANGULAR ± 3 °				MOLEX MOLEX INCORPORATED					

EMBOSSED CARRIER TAPE LAYOUT  
24 CKT USE FOR ILLUSTRATION ONLY



3. PACKAGING STANDARD IS AS PER EIA-481.

CORRECT PART ILLUSTRATION EC NO: S2012-0647 DRWN:SKANG 2012/02/22 CHKD:ATSEE 2012/04/30 APPR:MLONG 2012/05/03	QUALITY SYMBOLS	GENERAL TOLERANCES (UNLESS SPECIFIED)		DIMENSION STYLE	SCALE	DESIGN UNITS	THIRD ANGLE PROJECTION	
	▽=0 ∠=0	mm	INCH	MM ONLY	NTS	METRIC		
		4 PLACES ± --- ± ---	3 PLACES ± --- ± ---	2 PLACES ± 0.2 ± ---	1 PLACE ± --- ± ---	ANGULAR ± 3 °	DRAWN BY ATSEE DATE 2003/10/14 CHECKED BY KCL ING DATE 2003/11/07 APPROVED BY SKTOH DATE 2003/11/07	
		DRAFT WHERE APPLICABLE MUST REMAIN WITHIN DIMENSIONS		SIZE A3	THIS DRAWING CONTAINS INFORMATION THAT IS PROPRIETARY TO MOLEX INCORPORATED AND SHOULD NOT BE USED WITHOUT WRITTEN PERMISSION		TITLE MGRID, SHROUDED HEADER SMT, W/PEGS/CAP FOR PICK & PLACE IN TUBE AND T&R MOLEX INCORPORATED DOCUMENT NO. SD-87832-006 SHEET NO. 3 OF 4	

10 9 8 7 6 5 4 3 2 1

REG. OPTION	P/N W/O CAP IN TUBE	P/N W/CAP IN TUBE	P/N W/CAP IN TAPE & REEL	CKT SIZE	DIMENSION					
					W	G	Bo	So	Ao	Ko
NO	87832-04*0	87832-04*2	87832-51*2	4	16.00	7.50	7.15	-----	6.40	9.30
YES	87832-06*0	87832-06*2	87832-52*2	6	24.00	11.50	9.15	-----	6.40	9.30
YES	87832-08*0	87832-08*2	87832-53*2	8	24.00	11.50	11.05	-----	6.40	9.30
YES	87832-10*0	87832-10*2	87832-54*2	10	24.00	11.50	13.05	-----	6.40	9.30
YES	87832-12*0	87832-12*2	87832-55*2	12	32.00	14.20	15.15	28.40	6.85	9.30
YES	87832-14*0	87832-14*2	87832-56*2	14	32.00	14.20	17.05	28.40	6.40	9.30
YES	87832-16*0	87832-16*2	87832-57*2	16	32.00	14.20	19.05	28.40	6.40	9.30
YES	87832-18*0	87832-18*2	87832-58*2	18	44.00	20.20	21.05	40.40	6.40	9.30
YES	87832-20*0	87832-20*2	87832-59*2	20	44.00	20.20	23.05	40.40	6.40	9.30
YES	87832-22*0	87832-22*2	87832-60*2	22	44.00	20.20	25.05	40.40	6.40	9.30
YES	87832-24*0	87832-24*2	87832-61*2	24	44.00	20.20	27.05	40.40	6.40	9.30
YES	87832-26*0	87832-26*2	87832-62*2	26	44.00	20.20	29.05	40.40	6.40	9.30
YES	87832-28*0	87832-28*2	87832-63*2	28	56.00	26.20	31.05	52.40	6.40	9.30
YES	87832-30*0	87832-30*2	87832-64*2	30	56.00	26.20	33.05	52.40	6.40	9.30
YES	87832-32*0	87832-32*2	87832-65*2	32	56.00	26.20	35.05	52.40	6.40	9.30
YES	87832-34*0	87832-34*2	87832-66*2	34	56.00	26.20	37.05	52.40	6.40	9.30
YES	87832-36*0	87832-36*2	-----	36	-----	-----	-----	-----	-----	-----
YES	87832-38*0	87832-38*2	-----	38	-----	-----	-----	-----	-----	-----
YES	87832-40*0	87832-40*2	87832-69*2	40	56.00	26.20	43.05	52.40	6.40	9.30
YES	87832-42*0	87832-42*2	-----	42	-----	-----	-----	-----	-----	-----
YES	87832-44*0	87832-44*2	87832-71*2	44	56.00	26.20	46.80	52.40	6.40	9.30
YES	87832-46*0	87832-46*2	87832-72*2	46	56.00	26.20	47.05	52.40	6.40	9.30
YES	87832-48*0	87832-48*2	-----	48	-----	-----	-----	-----	-----	-----
YES	87832-50*0	87832-50*2	87832-74*2	50	72.00	34.20	53.05	68.40	6.40	9.30

PLS REFER TO PART 87832-\*\*08 FOR CENTER LOCKING SLOT OPTION.


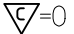
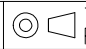
PART NUMBER LEGEND:

87832- \* \* \* \*

PLATING OPTION

2 - 0.38um/15uin GOLD IN CONTACT AREA AND 1.88um/75uin MIN. MATT TIN IN SOLDER TAIL AREA OVER 1.27um/50uin MIN.NICKEL OVERALL.

6 - 0.05-0.13um/2-5uin GOLD IN CONTACT AREA AND 1.88um/75uin MIN. MATT TIN IN SOLDER TAIL AREA OVER 1.27um/50uin MIN.NICKEL OVERALL.

<b>CORRECT PART ILLUSTRATION</b> EC NO: S2012-0647 DRWN:SKANG 2012/02/22 CHKD:ATSEE 2012/04/30 APPR:MLONG 2012/05/03	QUALITY SYMBOLS  = 0  = 0.2	GENERAL TOLERANCES (UNLESS SPECIFIED)		DIMENSION STYLE <b>MM ONLY</b>		SCALE NTS	DESIGN UNITS METRIC	 THIRD ANGLE PROJECTION		
				DRAWN BY ATSEE	DATE 2003/10/14	TITLE MGRID, SHROUDED HEADER SMT, W/PEGS/CAP FOR PICK & PLACE IN TUBE AND T&R				
				CHECKED BY KCLING	DATE 2003/11/07	MOLEX INCORPORATED				
				APPROVED BY SKTOH	DATE 2003/11/07	MATERIAL NO. SEE TABLE	DOCUMENT NO. SD-87832-006	SHEET NO. 4 OF 4		
DRAFT WHERE APPLICABLE MUST REMAIN WITHIN DIMENSIONS		THIS DRAWING CONTAINS INFORMATION THAT IS PROPRIETARY TO MOLEX INCORPORATED AND SHOULD NOT BE USED WITHOUT WRITTEN PERMISSION								

9 8 7 6 5 4 3 2 1