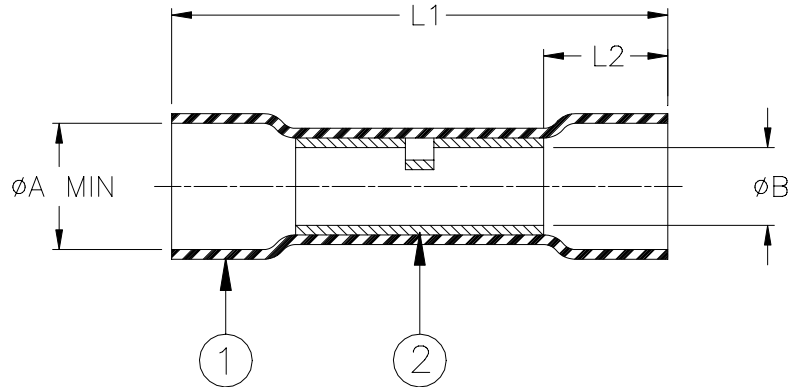


SPECIFICATION CONTROL DRAWING



| Product Revision | | Color | Marking | Size Range mm ² (AWG) | L1 ±1.5 (L1 ±0.06) | L2 min | øA* | | øB min | Wire Strip Length Nom. |
|------------------|---|--------|-----------------|--|-----------------------|----------------|-----------------|-----------------|-----------------|------------------------------|
| Product Name | | | | | | | (a) min | (b) max | | |
| C-203-01 | A | Red | PolyCrimp 22-18 | 0.5 - 1.0 (22 - 18) | 31.5 (1.24) | 5.00 (0.20) | 3.70 (0.146) | 1.14 (0.045) | 1.47 (0.058) | 6 to 10 (1/4 to 3/8) |
| C-203-02 | A | Blue | PolyCrimp 16-14 | 1.5 - 2.5 (16 - 14) | 31.5 (1.24) | 5.0 (0.20) | 4.60 (0.181) | 2.00 (0.080) | 2.33 (0.092) | 6 to 10 (1/4 to 3/8) |
| C-203-03 | A | Yellow | PolyCrimp 12-10 | 3.0 - 6.0 (12 - 10) | 37.5 (1.48) | 10.0 (0.39) | 6.50 (0.255) | 2.54 (0.100) | 3.50 (0.138) | 10 to 13 (3/8 to 1/2) |

MATERIALS

- INSULATION SLEEVE: Heat-shrinkable, radiation cross-linked polyethylene with a polyethylene-based hot-melt adhesive liner. Color per table.
- CRIMP SPLICE: Tin-plated copper alloy.
BASE METAL: Copper Alloy C110 or better.
PLATING: Tin plated per MIL-T-10727, Type 1.

APPLICATION

- These parts may be used to obtain a one-to-one in-line (butt) splice in wires meeting the size range and diameter restraints specified herein and having a temperature rating of not less than 85°C.
- *øA: (a) Minimum diameter as received: Wire insulation diameter must be less than this value.
(b) Maximum diameter after recovery: Wire insulation diameter must be larger than this value to obtain an environment resistant splice.
- Wires are to be stripped per table, inserted into opposite ends of the crimp barrel, crimped with a Raychem AD-1522 tool (or equivalent). The sleeve must be heated along its whole length until the crimp marks are gone and the ends of the sleeve recover onto the wires.
- Spliced assemblies will meet the requirements of Raychem Specification D-5203.

| | | | | | | |
|--|---------------------------------------|--|------------------------------------|----------------|---------------------------|------------------|
| | | RAYCHEM Tyco Electronics Corporation 300 Constitutional Drive Menlo Park, CA 94025 USA | TITLE: POLY CRIMP SPLICE | | | |
| Unless otherwise specified dimensions are in millimeters. [Inches dimensions are shown in brackets] | | | DOCUMENT NO.: C-203-0X | | | |
| TOLERANCES: 0.00 N/A 0.0 N/A 0 N/A | ANGLES: N/A ROUGHNESS IN MICRON | Tyco Electronics reserves the right to amend this drawing at any time. Users should evaluate the suitability of the product for their application. | DOC. ISSUE: 1 | | DATE: 25-Apr-03 | |
| PREPARED BY: mforonda | REPLACES: D010534 | DCR NUMBER: D030243 | PROD. REV.: SEE TABLE | SCALE: None | SIZE: A | SHEET: 1 of 1 |

If this document is printed it becomes uncontrolled. Check for the latest revision.