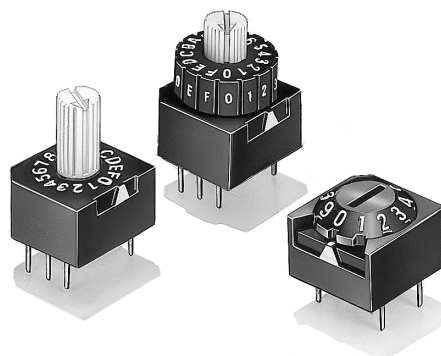




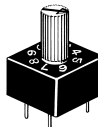

# Sealed Rotary DIP Switch A6A

## Subminiature DIP Switch for High-Density Packaging

- Series includes a Cone type that can be operated from the top or side, an extended shaft type that can be operated while mounted on a panel, and a flat type.
- A slider lock and rotating PCB system achieve stable contact reliability.
- Sealed construction equivalent to IP64 (IEC 60529) prevents flux penetration and provides high contact reliability even in dusty locations and locations where water is used
- RoHS Compliant



## Ordering Information

		Part Numbers			
		Standard (Cone)	Flat	Extended shaft	Thumbwheel
					
Output code	No. of positions				
BCD 1-2-4-8	10	<b>A6A-10R</b>	<b>A6A-10RF</b>	<b>A6A-10RS</b>	<b>A6A-10RW</b>
BCD 1-2-4-8 complement		<b>A6A-10C</b>	<b>A6A-10CF</b>	<b>A6A-10CS</b>	<b>A6A-10CW</b>
BCD Hexadecimal 1-2-4-8	16	<b>A6A-16R</b>	<b>A6A-16RF</b>	<b>A6A-16RS</b>	<b>A6A-16RW</b>
BCD Hexadecimal 1-2-4-8 complement		<b>A6A-16C</b>	<b>A6A-16CF</b>	<b>A6A-16CS</b>	<b>A6A-16CW</b>

**Important Note:** Switches cannot be water-washed.

## Specifications

### ■ Characteristics

<b>Switching capacity</b>		100 mA at 28 VDC, 1 mA at 5 VDC (minimum load)
<b>Contact resistance</b>		200 MΩ max.
<b>Insulation resistance</b>		10 MΩ min. (at 250 VDC)
<b>Dielectric strength</b>		500 VAC for 1 minute between current-carrying metal part and ground 250 VAC for 1 minute between terminals
<b>Operating torque</b>		120 to 250 g-cm (1.18 to 2.45 x 10 <sup>-2</sup> N-m) max.
<b>Vibration resistance</b>	<b>Malfunction durability</b>	10 to 55 Hz, 1.5 mm double amplitude
<b>Shock resistance</b>	<b>Malfunction durability</b>	300 m/s <sup>2</sup> (30 G) min.
<b>Ambient operating temperature</b>		-10° to 70°C at 60% RH max. (with no icing or condensation)
<b>Ambient operating humidity</b>		45% to 85% RH (at 5 to 35°C)
<b>Service life</b>	<b>Mechanical</b>	10,000 detent operations min.
	<b>Electrical</b>	2,000 detent operations min.
<b>Weight</b>		Cone: Approx. 0.8 g Flat: Approx. 0.7 g Extended shaft: Approx. 0.8g Thumbwheel: Approx. 1.0g

**Note:** Data shown are of initial value.

# Output Codes

## 10-position Models

Type	BCD 1-2-4-8				BCD 1-2-4-8 complement			
	1	2	4	8	$\bar{1}$	$\bar{2}$	$\bar{4}$	$\bar{8}$
0					●	●	●	●
1	●					●	●	●
2		●			●		●	●
3	●	●					●	●
4			●		●	●		●
5	●		●			●		●
6		●	●		●			●
7	●	●	●					●
8				●	●	●	●	
9	●			●		●	●	

Note: "●" indicates that the internal switch is ON.

## 16-position Models

Type	BCD/hexadecimal 1-2-4-8				BCD/hexadecimal 1-2-4-8 complement			
	1	2	4	8	$\bar{1}$	$\bar{2}$	$\bar{4}$	$\bar{8}$
0					●	●	●	●
1	●					●	●	●
2		●			●		●	●
3	●	●					●	●
4			●		●	●		●
5	●		●			●		●
6		●	●		●			●
7	●	●	●					●
8				●	●	●	●	
9	●			●		●	●	
A		●		●	●			●
B	●	●		●				●
C			●	●	●	●		
D	●		●	●		●		
E		●	●	●	●			
F	●	●	●	●				

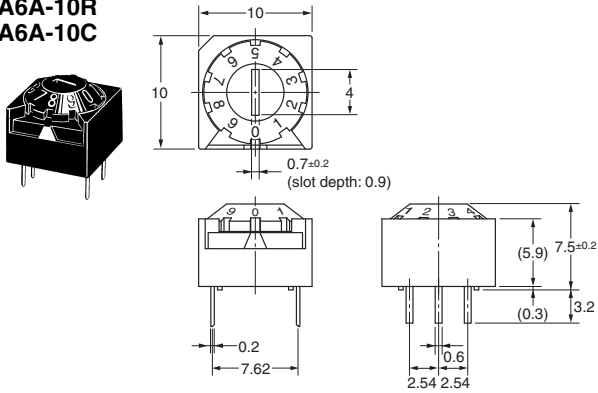
Note: "●" indicates that the internal switch is ON.

# Dimensions

- Note: 1. All units are in millimeters unless otherwise indicated.
- 2. Unless otherwise specified, a tolerance of  $\pm 0.4$  mm applies to all dimensions.

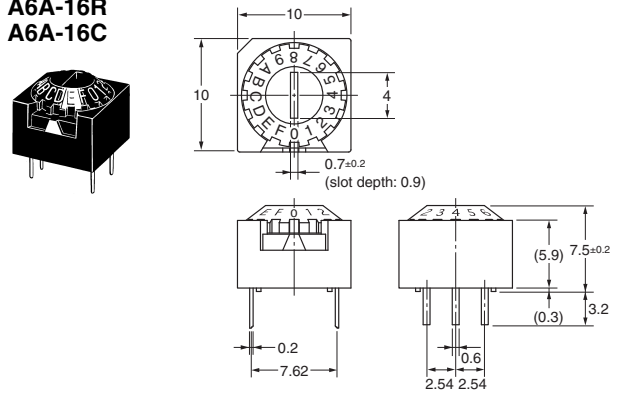
### Standard (Cone) Type, 10 Positions

A6A-10R  
A6A-10C



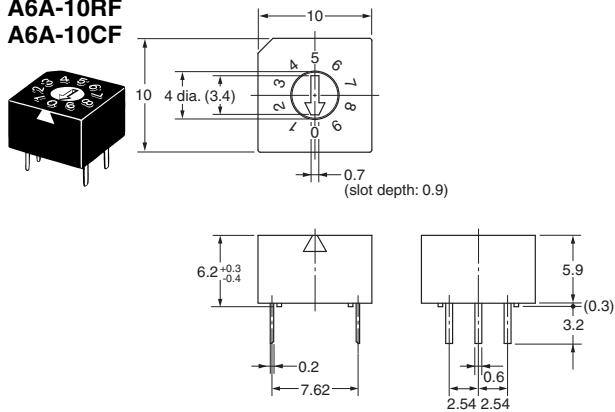
### Standard (Cone) Type, 16 Positions

A6A-16R  
A6A-16C



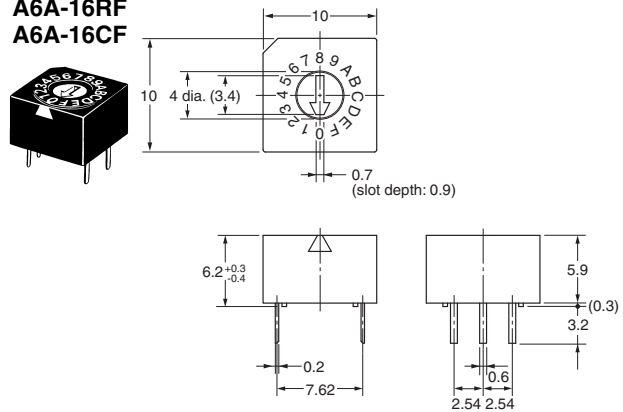
### Flat Type, 10 Positions

A6A-10RF  
A6A-10CF



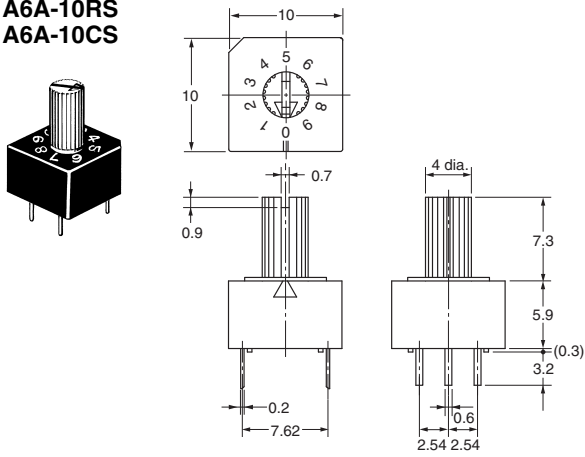
### Flat Type, 16 Positions

A6A-16RF  
A6A-16CF



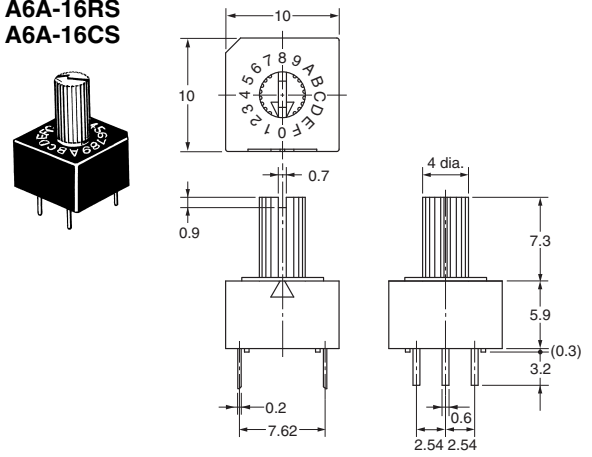
Extended Shaft Type, 10 Positions

A6A-10RS  
A6A-10CS



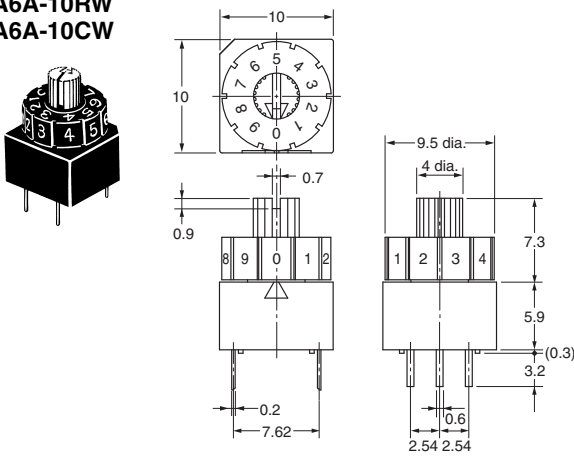
Extended Shaft Type, 16 Positions

A6A-16RS  
A6A-16CS



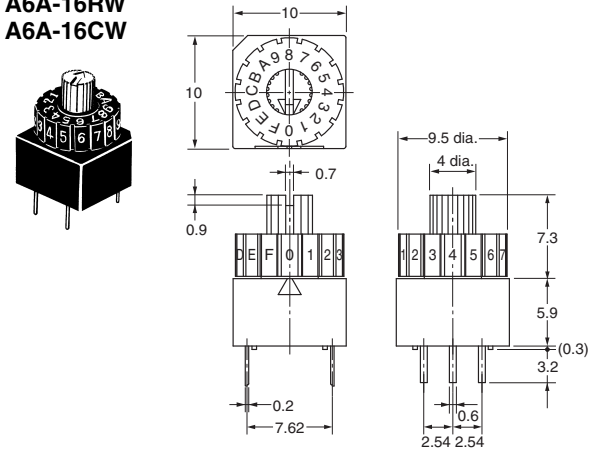
Thumbwheel Type, 10 Positions

A6A-10RW  
A6A-10CW

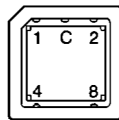


Thumbwheel Type, 16 Positions

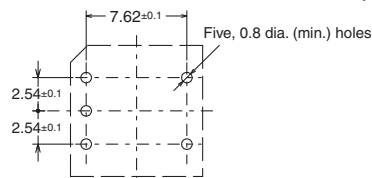
A6A-16RW  
A6A-16CW



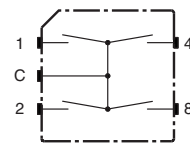
Terminal arrangement  
(bottom view)



Mounting holes  
(Top view)



Internal connections  
(top view)



All sales are subject to Omron Electronic Components LLC standard terms and conditions of sale, which can be found at [http://www.components.omron.com/components/web/webfiles.nsf/sales\\_terms.html](http://www.components.omron.com/components/web/webfiles.nsf/sales_terms.html)

**ALL DIMENSIONS SHOWN ARE IN MILLIMETERS.**  
To convert millimeters into inches, multiply by 0.03937. To convert grams into ounces, multiply by 0.03527.

---

**OMRON**<sup>®</sup>

**OMRON ELECTRONIC  
COMPONENTS LLC**

55 E. Commerce Drive, Suite B  
Schaumburg, IL 60173

**847-882-2288**

**OMRON ON-LINE**

Global - <http://www.omron.com>

USA - <http://www.components.omron.com>