

Specification Status: Released

Electrical Rating

Voltage: 15V MAX
Current: 100A MAX

Chip Size: 5 X 7mm

Leads: Nickel 1/4H
0.125mm nominal thickness

Tape: Polyester (White)
8mm Width

Solder: Lead-free

Lot Marking Ink Color (Green)

Marking:

- Manufacturer's Mark
- ✕ 120 — Part Identification
- □ □ □ — Lot Identification

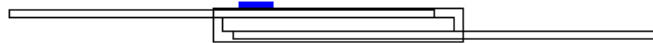
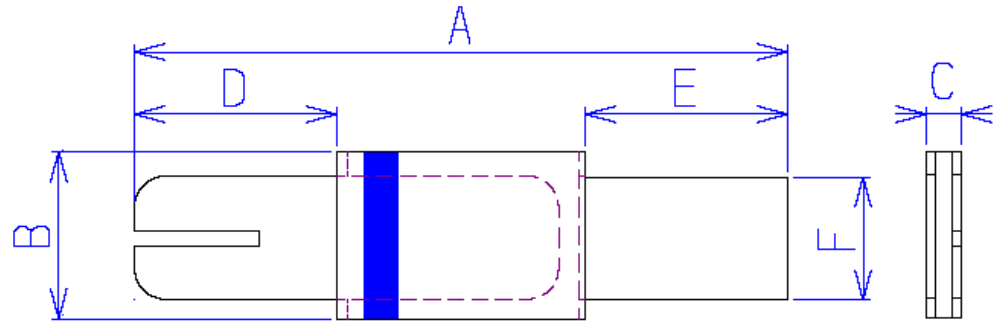


TABLE I. DIMENSIONS:

| | A | | B | | C | | D | | E | | F | | G | |
|------|--------|--------|--------|--------|--------|--------|--------|--------|--------|--------|--------|--------|-----|-----|
| | MIN | MAX | MIN | MAX | MIN | MAX | MIN | MAX | MIN | MAX | MIN | MAX | MIN | MAX |
| Mm: | 19.9 | 22.1 | 4.9 | 5.2 | 0.6 | 1.0 | 5.5 | 7.5 | 5.5 | 7.5 | 3.9 | 4.1 | | |
| In*: | (0.78) | (0.88) | (0.19) | (0.20) | (0.02) | (0.04) | (0.22) | (0.30) | (0.22) | (0.30) | (0.15) | (0.16) | | |

*Rounded off approximation

TABLE II. PERFORMANCE RATINGS: As measured in Muller Kelvin Clips Model BU-75K.

| I HOLD | CURRENT TRIP LIMITS | | | | | | | | | TIME TO TRIP | REFERENCE RESISTANCE | ONE-HOUR POST-TRIP RESISTANCE | TRIPPED-STATE POWER DISSIPATION | | | | | |
|--------|---------------------|------|--------------|------|--------------|------|--------------|------|-----------------------|--------------|----------------------|-------------------------------|---------------------------------|--------------|-----|--------------------|-----|-----|
| | AMPS AT 0°C | | AMPS AT 20°C | | AMPS AT 60°C | | AMPS AT --°C | | SECONDS AT 20°C, 6.0A | | | | | OHMS AT 20°C | | WATTS AT 20°C, 15V | | |
| HOLD | HOLD | TRIP | HOLD | TRIP | HOLD | TRIP | HOLD | TRIP | HOLD | TRIP | TYP | MAX | MIN | MAX | MIN | MAX | TYP | MAX |
| 1.2 | 1.5 | 3.1 | 1.2 | 2.7 | 0.8 | 1.8 | --- | --- | --- | 5 | 0.085 | 0.160 | 0.085 | 0.220 | --- | --- | --- | 1.2 |

Agency Recognitions:
Reference Documents:
Precedence:
Effectivity:
CAUTION:
Material Information:

UL, TUV, CSA
PS300

This specification takes precedence over documents referenced herein.

Reference documents shall be the issue in effect on the date of invitation for bid.

Operation beyond the rated voltage or current may result in rupture, electrical arcing or flame

ROHS Compliant

ELV Compliant

Pb-Free

Directive 2002/95/EC
Compliant

Directive 2000/53/EC
Compliant

