

Specification Status: RELEASED

Max Electrical Rating at 20°C

Operating Voltage: 250V_{DC}

Interrupt Current: 3A_{RMS}

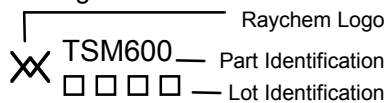
Fault Voltage: 600V_{RMS}

Lead Material: Tin plated brass

Configuration: Two PPTC devices per
TSM600 part

Case Material: Nylon Resin (UL94 V-0)
1000V dielectric rating

Marking:



Terminal Description:

T1 = Tip In T4 = Tip Out

R2 = Ring In R3 = Ring Out

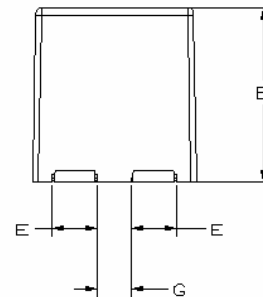
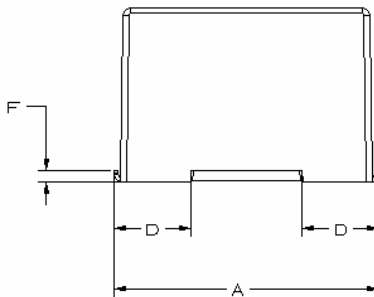
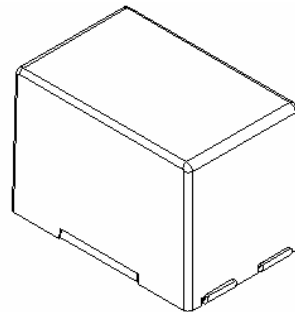
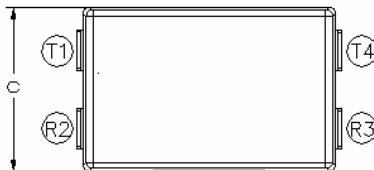


TABLE I. DIMENSIONS:

| | A | | B | | C | | D | | E | | F | | G | |
|-----|---------|---------|---------|---------|---------|---------|---------|---------|---------|---------|---------|---------|---------|---------|
| mm: | MIN | MAX | MIN | MAX | MIN | MAX | MIN | MAX | MIN | MAX | MIN | MAX | MIN | MAX |
| in: | (0.671) | (0.691) | (0.440) | (0.460) | (0.410) | (0.440) | (0.187) | (0.203) | (0.099) | (0.111) | (0.022) | (0.038) | (0.087) | (0.122) |

TABLE II. PERFORMANCE RATINGS @ 20°C (unless otherwise noted):

| I HOLD (A) | | RESISTANCE (Ω)** @ 20° C | | | TIME TO TRIP @ 3 A (Seconds) | | OPERATING TEMPERATURE (°C) | | Tripped state Power Dissipation @ 250V (Watts) TYPICAL |
|------------|-------|--------------------------|-------|---------------------|------------------------------|-----|----------------------------|-----|--|
| 20°C | 60°C | R MIN | R TYP | R ₁ MAX* | TYP | MAX | MIN | MAX | |
| 0.250 | 0.140 | 1.0 | 3.5 | 7.0 | 0.8 | 6 | -40 | 85 | 2 |

* Maximum device resistance, measured 1-hour post reflow or post trip.

** Resistance per PPTC device.

Additional Ratings @ 20°C

| | | | |
|---------------------|---|----------------------|-----------------------------------|
| Resistance Matched: | 0.5 Ohm measured 24 hours after reflow installation | Storage Temperature: | -40° to 85° C |
| Line Balance: | 0.5 Ohm, 59 dB @ 4 kHz minimum*** | Storage Humidity: | Per IPC/JEDEC J-STD-020A Level 2a |

***Tested in accordance with IEEE 455 with a device having a series longitudinal balance value of at least 60dB

| | |
|----------------------|---|
| Agency Recognitions: | UL, CSA |
| Reference Documents: | PS300 |
| Precedence: | This specification takes precedence over documents referenced herein. |
| Effectivity: | Reference documents shall be the issue in effect on the date of invitation for bid. |

MATERIALS INFORMATION

ROHS Compliant

Directive 2002/95/EC
Compliant

ELV Compliant

Directive 2000/53/EC
Compliant

Pb-Free

