

## Specification Status: RELEASED

### Max Electrical Rating at 20°C

Operating Voltage: 250V<sub>DC</sub>

Interrupt Current: 3A<sub>RMS</sub>

Fault Voltage: 600V<sub>RMS</sub>

Lead Material: Tin plated brass

Configuration: Two PPTC devices per  
TSM600 part

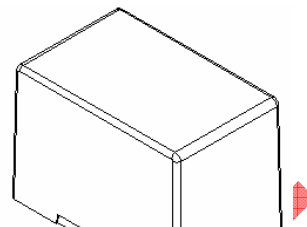
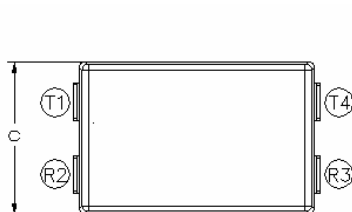
Case Material: Nylon Resin (UL94 V-0)  
1000V dielectric rating

### Marking:

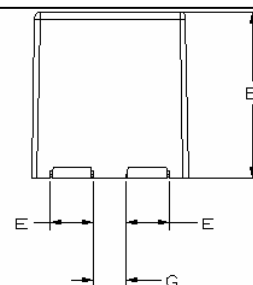
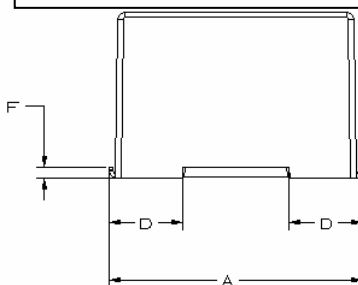
Raychem Logo  
X TSM600 — Part Identification  
□ □ □ □ — Lot Identification

### Terminal Description:

T1 = Tip In T4 = Tip Out  
R2 = Ring In R3 = Ring Out



**Not to be used for new designs.**  
**For new designs please use TSM600-250F-RA**



**TABLE I. DIMENSIONS:**

	A		B		C		D		E		F		G	
mm:	MIN	MAX	MIN	MAX	MIN	MAX	MIN	MAX	MIN	MAX	MIN	MAX	MIN	MAX
in:	(0.671)	(0.691)	(0.440)	(0.460)	(0.410)	(0.440)	(0.187)	(0.203)	(0.099)	(0.111)	(0.022)	(0.038)	(0.087)	(0.122)

**TABLE II. PERFORMANCE RATINGS @ 20°C (unless otherwise noted):**

IHOLD (A)		RESISTANCE (Ω)** @ 20° C			TIME TO TRIP @ 3 A (Seconds)		OPERATING TEMPERATURE (°C)		Tripped State Power Dissipation @ 250V (Watts) TYPICAL
20°C	60°C	R MIN	R TYP	R <sub>1</sub> MAX*	TYP	MAX	MIN	MAX	
0.250	0.140	1.0	3.0	5.0	1	6	-40	85	

\* Maximum device resistance, measured 1-hour post reflow or post trip.

\*\* Resistance per PPTC device.

### Additional Ratings @ 20°C

Resistance Matched:

0.5 Ohm measured 24 hours after  
reflow installation

Storage Temperature: -40° to 85° C

Line Balance:

0.5 Ohm, 59 dB @ 4 kHz minimum\*\*\*

Storage Humidity: Per IPC/JEDEC J-STD-020A Level 2a

\*\*\*Tested in accordance with IEEE 455 with a device having a series longitudinal balance value of at least 60dB.

Agency Recognition:

UL, CSA

Reference Documents:

PS300

Precedence:

This specification takes precedence over documents referenced herein.

Effectivity:

Reference documents shall be the issue in effect on the date of invitation for bid.