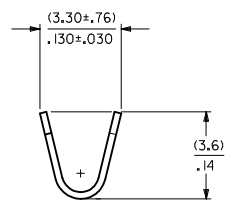
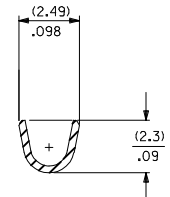
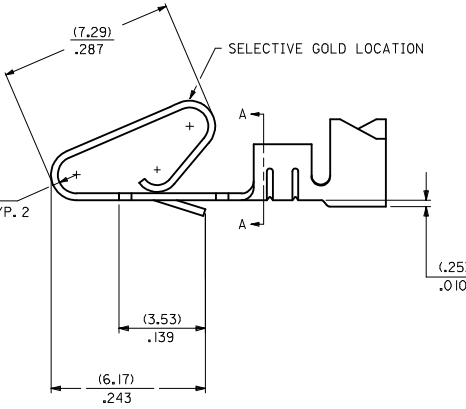
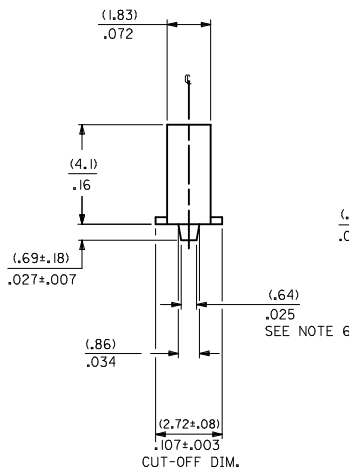


MATERIAL CODE  
 (.27)/.0106 THK  
 1=BRASS  
 3=PHOS BRONZE

WINDING SPEC.  
 A=CHAIN, PER WINDING DETAIL "A"  
 BLANK=CHAIN, PER WINDING DETAIL "B"  
 L=LOOSE

OPTION CODE  
 BLANK=AS SHOWN  
 C=CAT EAR OPTION

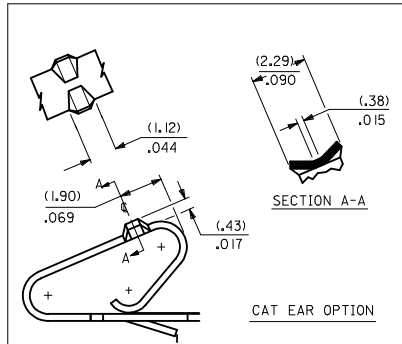
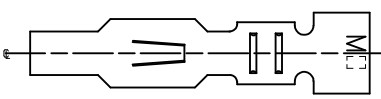
- FINISH:
- (P909) OVERALL HOT TIN DIP: (0.00254)/.000100 MIN.
  - (122) OVERALL TIN: (0.00381)/.000150 MIN.  
OVER (0.00076)/.000030 MIN. NICKEL
  - (154) OVERALL TIN: (0.00254)/.000100 MIN.  
OVER (0.00127)/.000050 MIN. NICKEL
  - (224) OVERALL MATTE TIN: (0.00508)/.000200 MIN.  
OVER (0.00127)/.000050 MIN. NICKEL
  - (550) SELECT GOLD: (0.00038)/.000015 MIN.  
OVERALL GOLD FLASH: (0.00005)/.000002 MIN.  
OVERALL NICKEL UNDERPLATE: (0.00076)/.000030 MIN.
  - (555) SELECT GOLD: (0.00038)/.000015 MIN.  
OVERALL NICKEL UNDERPLATE: (0.00076)/.000030 MIN.
  - (558) SELECT GOLD: (0.00076)/.000030 MIN.  
OVERALL GOLD FLASH: (0.00005)/.000002 MIN.  
OVERALL NICKEL UNDERPLATE: (0.00127)/.000050 MIN.
  - (561) SELECT GOLD: (0.00076)/.000030 MIN.  
OVERALL NICKEL UNDERPLATE: (0.00127)/.000050 MIN.
  - (591) SELECT GOLD: (0.00127)/.000050 MIN.  
OVERALL GOLD FLASH: (0.00005)/.000002 MIN.  
OVERALL NICKEL UNDERPLATE: (0.00127)/.000050 MIN.



SECTION A-A  
BACKGROUND OMITTED

BACKGROUND OMITTED

- NOTES:
1. MATERIAL: SEE LEGEND
  2. FINISH: SEE LEGEND
  3. THIS PART CONFORMS TO PRODUCT SPECIFICATION PS-08-50.
  4. PACKAGING SPECIFICATION: LOOSE TERMINALS: PER PK-2759-001  
CHAIN FORM TERMINALS: NONE
  5. DIMENSIONS GIVEN ACROSS CENTERLINES ARE SYMMETRICAL ABOUT THOSE CENTERLINES WITHIN HALF THE TOTAL TOLERANCE.
  6. (0.86 ±0.05)/.034 ±.002 IS AN OPTIONAL DESIGN.
  7. CRIMP ACCEPTS 18 TO 24 AWG WIRE WITH (2.79)/.110 MAX. INSULATION DIAMETER. AND CAN ACCEPT (3.00)/.118 MAX. INSULATION DIAMETER WITH SPECIAL TOOLING.
  8. TERMINAL FOR USE IN 2139, 3001, 3069, AND 91813 SERIES HOUSINGS WITH (2.54)/.100 MAX. INSULATION DIAMETER, 2574, 6422, AND 5239 SERIES HOUSINGS WITH (2.79)/.110 MAX. INSULATION DIAMETER, AND 41695 SERIES HOUSING WITH (3.00)/.118 MAX. INSULATION DIAMETER.
  9. THIS PART CONFORMS TO CLASS B REQUIREMENTS OF COSMETIC SPECIFICATION PS-45499-002.



SECTION A-A  
CAT EAR OPTION

ADD WINDING VIEWS EC NO. UCP2014-4131 DRAWN BY: CHYONGKUIPER CHECKED BY: CHYONGKUIPER DATE: 2014/04/07 APPR:FSMITH DATE: 2014/04/21	QUALITY SYMBOLS ∇=0 ∇=0 ∇=0	GENERAL TOLERANCES (UNLESS SPECIFIED)		DIMENSION STYLE MM/IN		SCALE 10:1		DESIGN UNITS INCH		THIRD ANGLE PROJECTION		
		4 PLACES ±.010 ±.010 3 PLACES ±.025 ±.010 2 PLACES ±.036 ±.014 1 PLACE ±.036 ±.014 0 PLACE ±.036 ±.014		ANGLAR ±1/2° DRAFT WHERE APPLICABLE MUST REMAIN WITHIN DIMENSIONS		DRAWN BY: SAMIEC DATE: 06/03/86 CHECKED BY: PATEL DATE: 06/03/86 APPROVED BY: FSMITH DATE: 2012/03/20		MATERIAL NO. SEE CHART		DOCUMENT NO. SD-2478		SHEET NO. 1 OF 2
		CRIMP TERMINAL .156 CENTERS 18 TO 24 GA WIRE <b>molex</b>										

THIS DRAWING CONTAINS INFORMATION THAT IS PROPRIETARY TO MOLEX INCORPORATED AND SHOULD NOT BE USED WITHOUT WRITTEN PERMISSION

**2478-1-(\*\*\*)\***

PART NO.	ENG. NO.
08-50-0105	2478-1-(P909)
08-50-0106	2478-1-(P909)L
08-56-0105	2478-1-(550)
08-56-0106	2478-1-(550)L
08-55-0103	2478-1-(555)
08-55-0104	2478-1-(555)L
08-50-0119	2478-1-(122)
08-50-0120	2478-1-(122)L
08-50-0271	2478-1-(P909)A
08-50-0015	2478-1-(154)
08-50-0016	2478-1-(154)L
08-50-0063	2478-1-(224)
08-50-0064	2478-1-(224)L
08-55-0133	2478-1-(561)
08-55-0134	2478-1-(561)L

**2478-3-(\*\*\*)\***

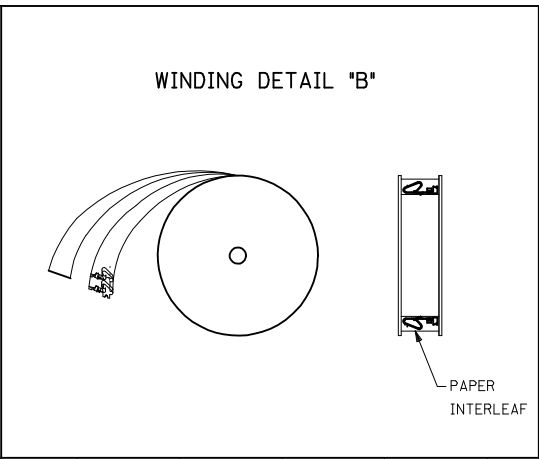
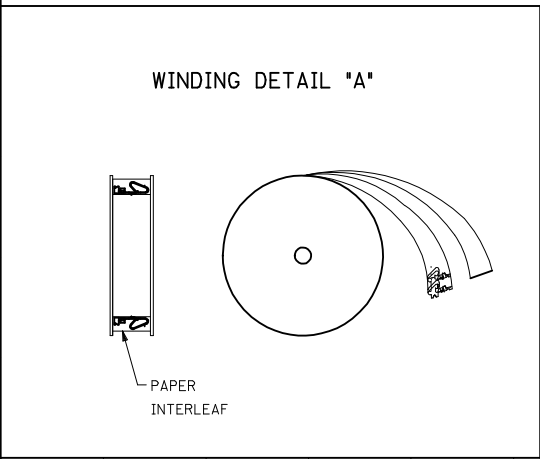
PART NO.	ENG. NO.
08-52-0071	2478-3-(P909)
08-52-0072	2478-3-(P909)L
08-65-0114	2478-3-(555)
08-65-0115	2478-3-(555)L
08-52-0811	2478-3-(154)
08-52-0812	2478-3-(154)L
08-50-0281	2478-3-(122)
	2478-3-(122)L
08-58-0121	2478-3-(550)
08-58-0122	2478-3-(550)L
08-58-0103	2478-3-(591)
08-58-0104	2478-3-(591)L
08-58-0114	2478-3-(558)
08-58-0115	2478-3-(558)L

**2478-1C-(\*\*\*)\***

PART NO.	ENG. NO.
08-50-0091	2478-1C-(154)
08-50-0093	2478-1C-(154)L

**2478-3C-(\*\*\*)\***

PART NO.	ENG. NO.
08-52-0044	2478-3C-(P909)
08-52-0045	2478-3C-(P909)L
08-52-0023	2478-3C-(154)
08-52-0024	2478-3C-(154)L



<p><b>SEE SHEET 1</b></p> <p>EC NO: UCP2014-4131</p> <p>DRAWN BY: CHYDANGUEN</p> <p>CHECKED BY: APPROVED</p> <p>DATE: 2014/04/07</p> <p>DATE: 2014/04/21</p>	<p>QUALITY SYMBOLS</p> <p>▽=0</p> <p>▽=0</p> <p>▽=0</p>	GENERAL TOLERANCES (UNLESS SPECIFIED)		DIMENSION STYLE		SCALE		DESIGN UNITS		THIRD ANGLE PROJECTION	
				MM/IN		---		INCH		<p>CRIMP TERMINAL</p> <p>.156 CENTERS</p> <p>18 TO 24 GA WIRE</p> <p><b>molex</b></p> <p>DOCUMENT NO. SD-2478</p>	
				mm		INCH		TITLE			
				4 PLACES ±.010		3 PLACES ±.010		DRAWN BY DATE			
		2 PLACES ±0.25		±.014		APPROVED BY DATE		MATERIAL NO.		SHEET NO.	
		1 PLACE ±0.36		±.014		DATE		SEE CHART		2 OF 2	
		0 PLACE ±.010		±.010		DATE		THIS DRAWING CONTAINS INFORMATION THAT IS PROPRIETARY TO MOLEX INCORPORATED AND SHOULD NOT BE USED WITHOUT WRITTEN PERMISSION			
		ANGULAR ±1/2°		DRAFT WHERE APPLICABLE		MUST REMAIN WITHIN DIMENSIONS		SIZE D			