

# Board to Board Connectors

## FH (Free Height) 0.6mm Pitch Board to Board GIGA Connectors

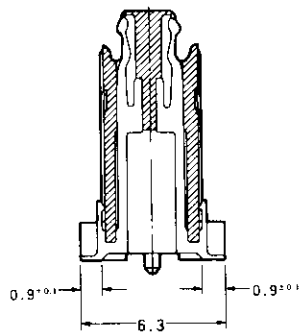
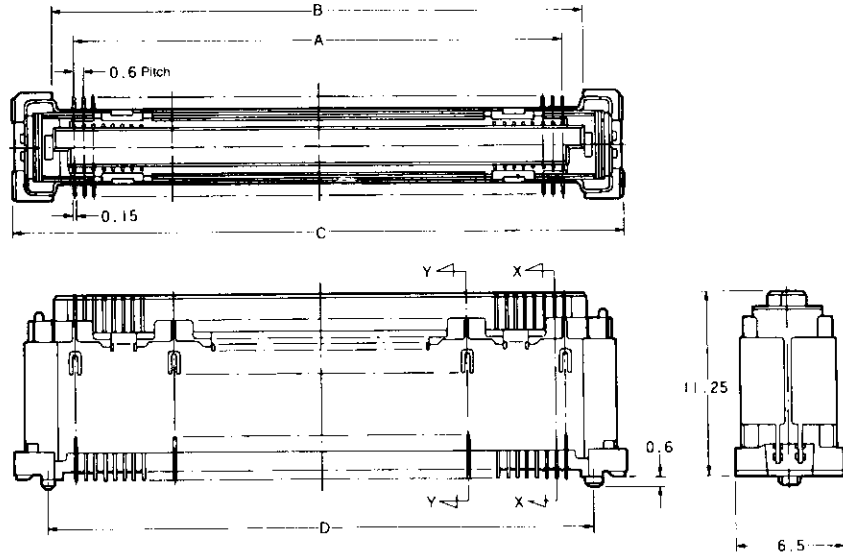
### SMT Typed

**12H Type**  
**Receptacle Assembly**  
**GIGA Type**  
**With Grounding Plate**

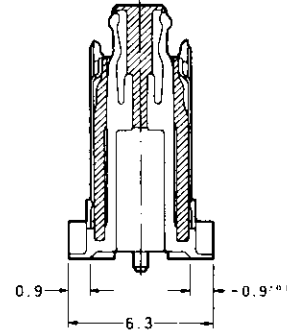
**Acceptable Board Stacking**  
**Height=12mm/13mm**  
**14mm/15mm**  
**16mm/18mm**

**Material and Finish :**  
 Housing — UL94V-0 rated heat resistant resin, natural color  
 Contact — Copper alloy, 0.2µm min. gold plated on contact area, 1.0µm gold plated on soldering area, 1.3µm min. nickel underplated on entire contact.

**For Mating Plug Distinction of Stacking Height, refer page 109**

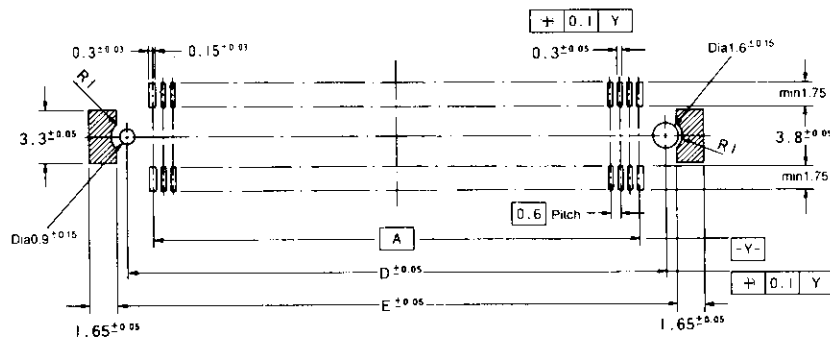


**Section Y-Y**  
(Grounding Position)



**Section X-X**  
(Signal Position)

No. of Pos.	Dimensions					P/N of Soft Tray Packaged	
	A	B	C	D	E	Without Sealant	P/N of Hard Tray Packaged With Sealant
140	41.4	44.0	48.7	44.6	45.8	1-316564-0	1-316318-0
160	47.4	50.0	54.7	50.6	51.8	—	1-316318-1



**PC Board Layout**