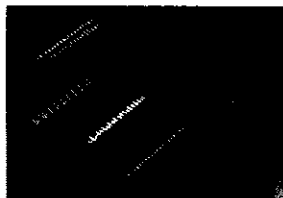




## Personal Systems Products Computer Industry

### Disk Drive/CD-ROM Connectors

#### .050 Series I Blindmate Single Connector Attachment (SCA 2) (CHAMP)



##### Material — Receptacles:

**Housing** — LCP, UL 94V-0, black  
**Contacts** — Phosphor bronze, plated  
0.00076mm min. gold on mating end,  
0.00381mm min. tin-lead on solder end,  
all over 0.00127mm min. nickel under-  
plating

**Retention Leg** — Brass, plated 0.00381  
min. tin-lead over 0.00127 min. nickel

##### Material — Plugs:

**Housing** — LCP, UL 94V-0, black  
**Contacts** — Phosphor bronze, unless  
otherwise specified, plated 0.00076mm  
min. gold on mating end, 0.00381mm  
min. tin-lead on solder end, all over  
0.00127mm min. nickel underplating

**Retention Leg** — Brass, plated  
0.00381mm min. tin-lead over  
0.00127mm min. nickel

#### For SCSI Disk Drives — 80 Position Receptacles & Plugs



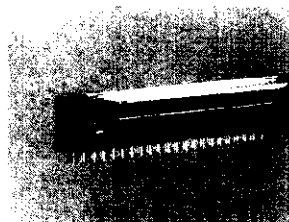
Receptacle — Vertical

**Part No. 787311-1**  
(With Keying Post/3.18mm Tail)  
**Part No. 787900**  
(With Keying Post/Press-Fit Leads)



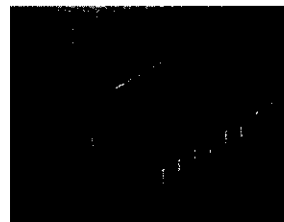
Receptacle — Vertical,  
Extended Height

**Part No. 787596-1**  
(With 4.57mm Tail)  
**Part No. 788395-1**  
(With Press-Fit Leads)



Receptacle — Right-Angle,  
Extended Height

**Part No. 787535-1**  
(With Sequenced Contacts)



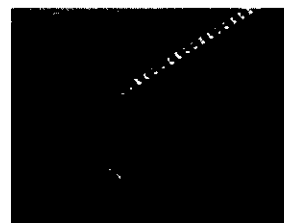
Plug — Vertical

**Part No. 84488-1**  
(With Polarization Post)  
**Part No. 84488-2**  
(Without Polarization Post)



Plug — Right-Angle,  
Surface Mount

**Part No. 5-917593-9**  
(With 0.00076mm min. Gold Plate)  
**Part No. 917593-9**  
(With 0.0002mm min. Gold Plate)



Plug — Straddle Mount

**Part No. 84487-1**  
(For 1.32mm max. thick pc board)

#### Product Facts:

- Single I/O connector for 3.5V SCSI disk drives
- Capable of carrying all data, control, power and auxiliary signals required by SCSI
- Meets the requirements of EIA-700AOAE
- Supports narrow and wide SCSI
- Transitions to Ultra SCSI at 40 Megabyte/Sec.
- Designed for backplane applications
- Completely backward compatible with CHAMP .050 Series I connectors



**Note:**  
BLUE part numbers indicate 2D  
geometry and 3D CAD models  
that are included on CD-ROM.