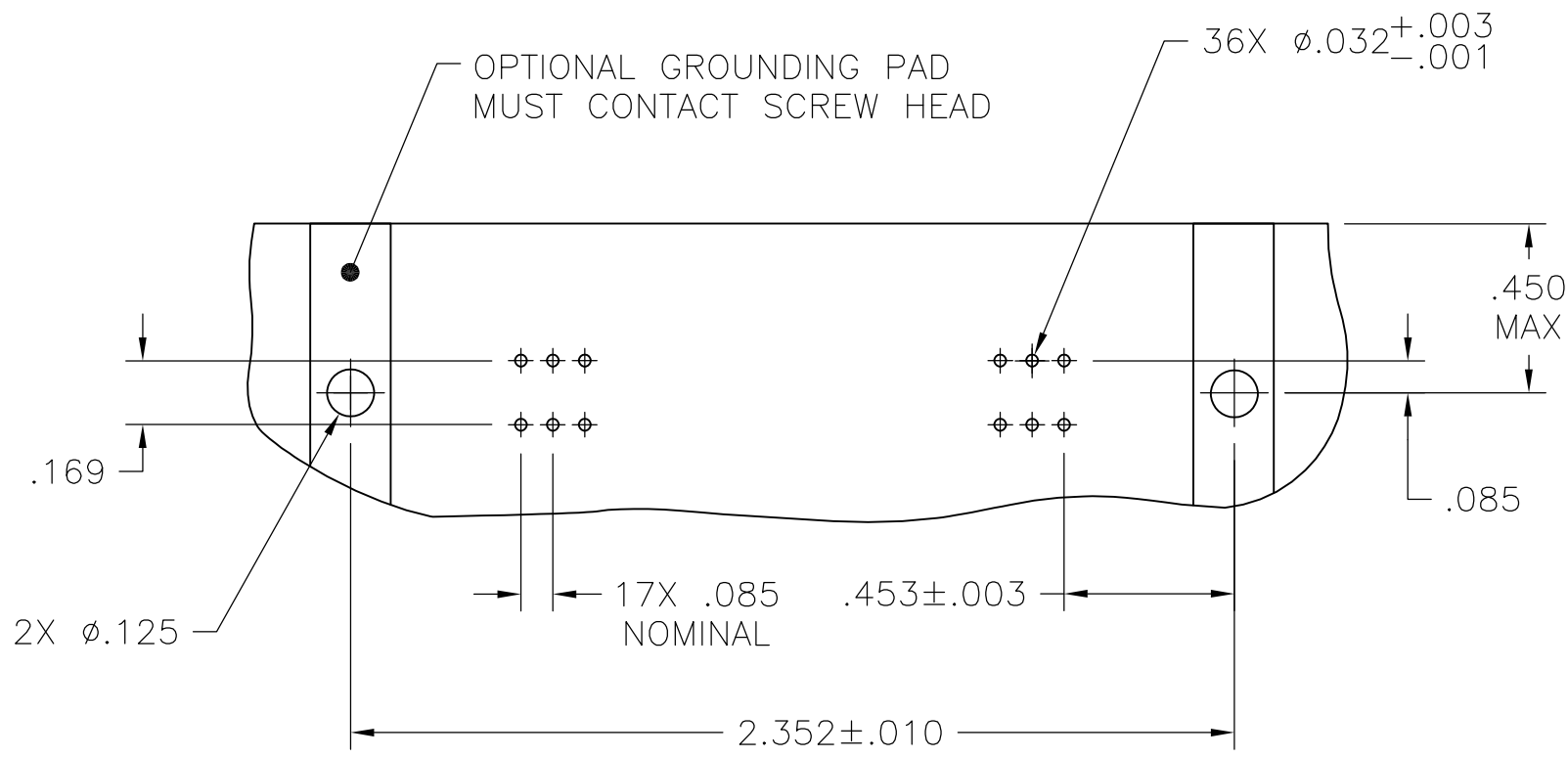


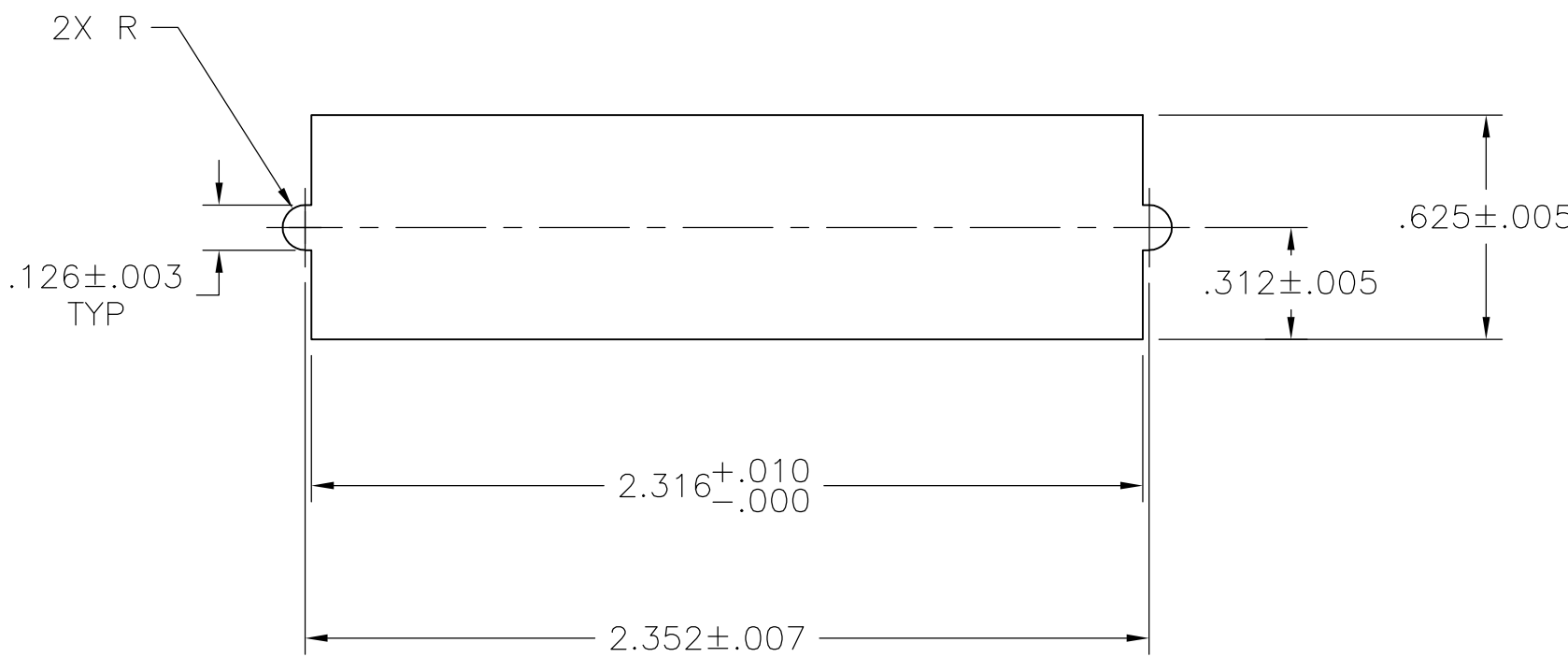
LOC		DIST		REVISIONS					
GP	00	P	LTR	DESCRIPTION			DATE	DWN	APVD
		B	REVISED PER ECO-08-007327			09APR08	BM	WM	



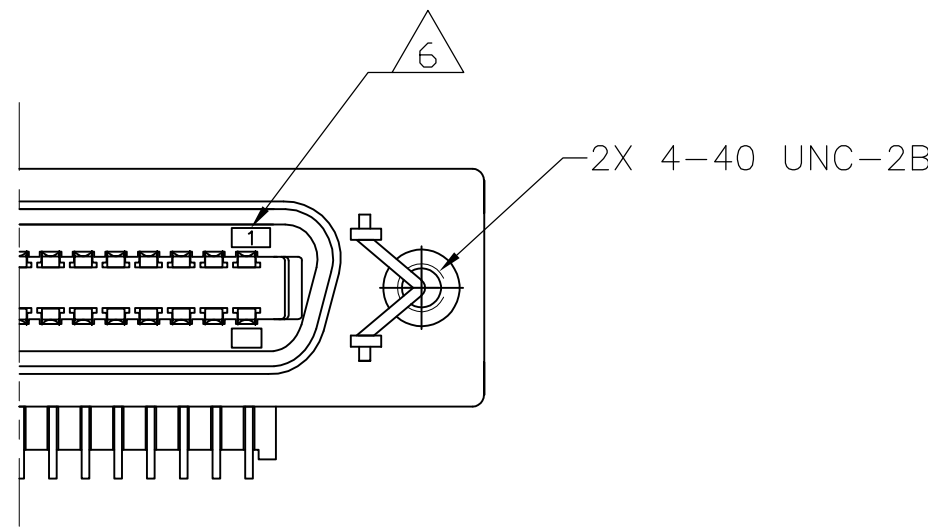
SUGGESTED PRINTED CIRCUIT BOARD
MOUNTING DIMENSIONS



TOP VIEW

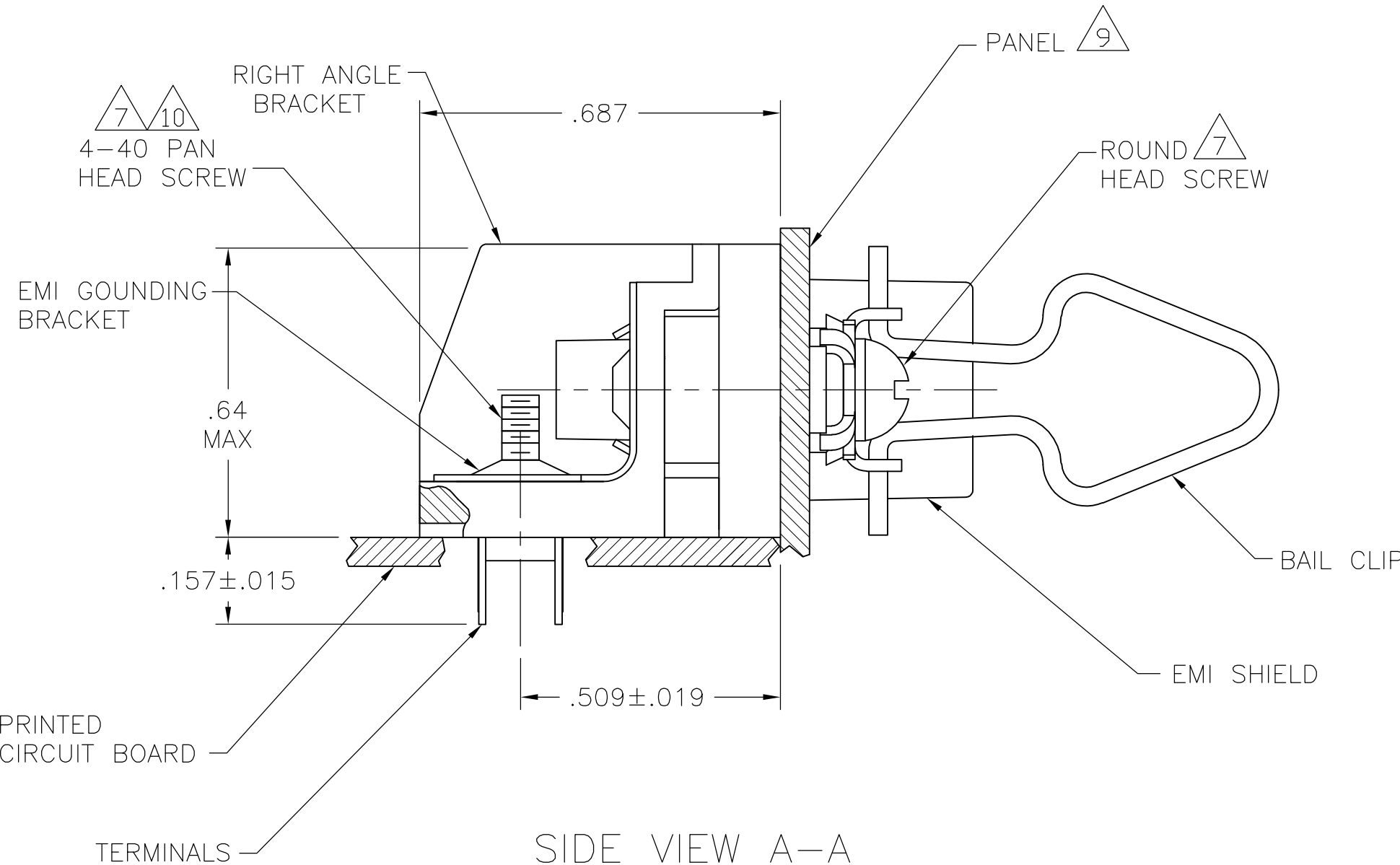


SUGGESTED REAR PANEL MOUNTING
CUTOUT DIMENSIONS



DETAIL A
STANDARD ORIENTAION

- 1 MATERIAL:
HOUSING, RIGHT ANGLE BRACKET, ADAPTER COMB & TERMINAL SUPPORT PLATE — THERMOPLASTIC (BLACK).
EMI SHIELD — BRIGHT NICKEL OVER COPPER PLATED DIE CASTING.
TERMINALS — HIGH STRENGTH COPPER ALLOY PLATED WITH EITHER .000030 MIN GOLD PLATE OR GOLD FLASH OVER PALLADIUM NICKEL PLATE, .000030 MIN TOTAL ON MATING SURFACE. .000120 MIN TIN PLATE ON TAILS. ALL OVER .000050 MIN NICKEL UNDERPLATE OVER ENTIRE TERMINAL.
BAIL CLIP — PASSIVATED STAINLESS STEEL.
2. THE CONTACT SURFACES OF THE TERMINALS ARE COATED WITH LUBRICANT.
3. CENTER-TO-CENTER SPACING OF TERMINALS IS .085 NOMINAL.
- 4 ALL DIMENSIONS SHOWN ARE MAXIMUM UNLESS OTHERWISE SPECIFIED.
- 5 DETAIL A IS VIEWED FROM MATING SIDE OF RECEPTACLE ASSEMBLY.
- 6 TERMINAL 1 IS LOCATED IN THIS ROW FOR STANDARD ORIENTATION.
- 7 SCREWS SHOWN FOR REFERENCE ONLY.
8. BAIL CLIPS & EMI SHIELD ARE ASSEMBLED TO CONNECTOR BEFORE SHIPMENT.
- 9 PANEL THICKNESS RANGE: .062 MAX.
- 10 STAINLESS STEEL SCREWS RECOMMENDED BECAUSE OF CONTACT WITH SOLDER BATH.



SIDE VIEW A-A
REAR PANEL MOUNTING DETAIL
SHOWN FOR RREFERENCE ONLY
SCALE 4:1

4-40 UNC-2B	STANDARD	A	5553815-3
SHIELD HOLE SIZE	ORIENTATION	DETAIL	PART NUMBER

THIS DRAWING IS A CONTROLLED DOCUMENT.		DWN B. MCMASTER 22AUG05	Tyco Electronics Corporation Harriaburg, PA 17105-3608			
DIMENSIONS: INCHES		CHK W. MILLHIMES 22AUG05	NAME M. WALMISEY 22AUG05			
TOLERANCES UNLESS OTHERWISE SPECIFIED:		PRODUCT SPEC				
0 PLC 1 PLC 2 PLC 3 PLC 4 PLC ANGLES FINISH		APPLICATION SPEC				
MATERIAL		SIZE A1	CAGE CODE 00779	DRAWING NO 5553815	RESTRICTED TO —	
CUSTOMER DRAWING		SCALE 2:1	SHEET 1 OF 1	REV B		