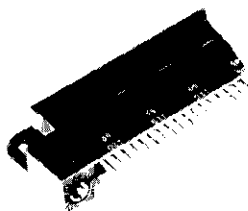


Right Angle Pin Header Assemblies for Flow Soldering



Related Product Data:

Mates with—Receptacles, pages 35 and 36

External Keying—page 41

Recommended Pc Board Layout—page 40

Commercial Pin Header Assemblies:

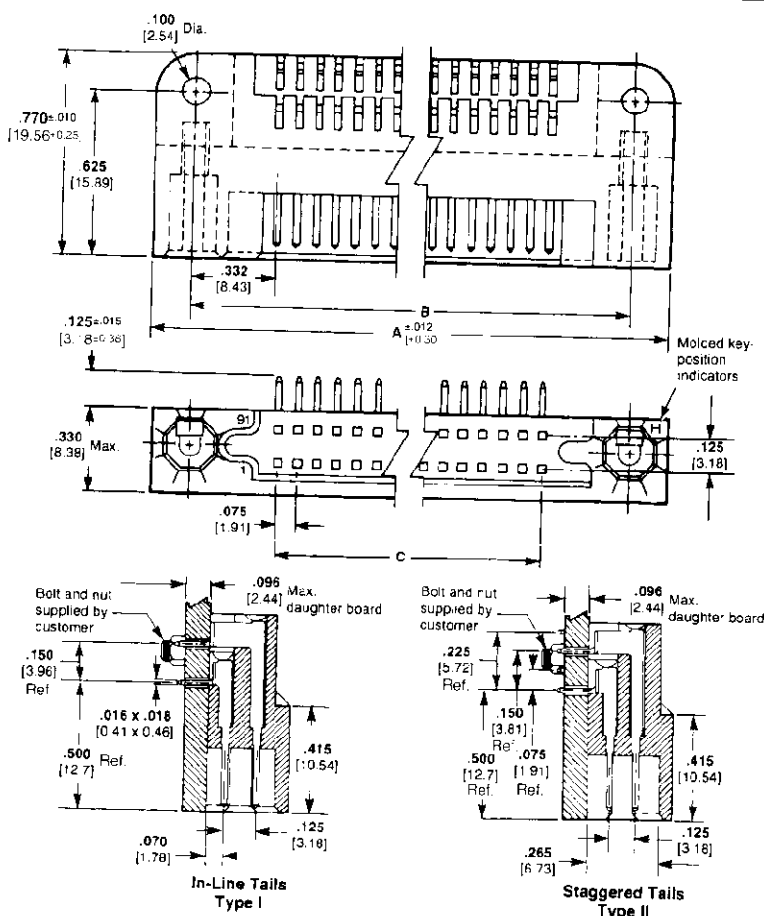
Housing Material—In accordance with MIL-C-55302

Contact Material and Finish—Brass per QQ-B-526 plated .000030 [0.00076] gold in the contact area. .000100 [0.00254] tin-lead on the tails over .000050 [0.00127] nickel on the entire contact

Military Pin Header Assemblies:

Housing Material—In accordance with MIL-C-55302

Contact Material and Finish—Brass per QQ-B-526 plated .000050 [0.00127] gold in the contact area. .000100 [0.00254] tin-lead on the tails over .000050 [0.00127] nickel on the entire contact



| No. of Positions | Dimensions | | | In-line, Type I | | | Staggered, Type II | | |
|------------------|-----------------|-----------------|-----------------|---------------------|---------------------|------------------|---------------------|---------------------|------------------|
| | A | B | C | Commercial Part No. | MIL-Part No. 55302/ | AMP MIL Part No. | Commercial Part No. | MIL-Part No. 55302/ | AMP MIL Part No. |
| 180 | 7.630 193.8 | 7.340 186.44 | 6.675 169.55 | — | 156-15 | 1-531719-5 | 1-531124-5 | 156-30 | 1-531720-5 |
| 160 | 6.880 174.75 | 6.590 167.39 | 5.925 150.5 | 1-531127-4 | 156-14 | 1-531719-4 | — | 156-29 | 1-531720-4 |
| 150 | 6.505 165.23 | 6.215 157.86 | 5.550 140.97 | — | 156-13 | 1-531719-3 | 1-531124-3 | 156-28 | 1-531720-3 |
| 120 | 5.380 136.65 | 5.090 129.29 | 4.425 112.4 | — | 156-12 | 1-531719-2 | — | 156-27 | 1-531720-2 |
| 110 | 5.005 127.13 | 4.715 119.76 | 4.050 102.87 | — | 156-11 | 1-531719-1 | — | 156-26 | 1-531720-1 |
| 100 | 4.530 117.6 | 4.340 110.24 | 3.675 93.35 | — | 156-10 | 1-531719-0 | — | 156-25 | 1-531720-0 |
| 90 | 4.255 108.08 | 3.965 100.71 | 3.300 83.82 | — | 156-09 | 531719-9 | — | 156-24 | 531720-9 |
| 80 | 3.880 98.55 | 3.590 91.19 | 2.925 74.3 | — | 156-08 | 531719-8 | 531124-8 | 156-23 | 531720-8 |
| 70 | 3.505 89.03 | 3.215 81.66 | 2.550 64.77 | — | 156-07 | 531719-7 | — | 156-22 | 531720-7 |
| 60 | 3.130 79.5 | 2.840 72.14 | 2.175 55.25 | — | 156-06 | 531719-6 | 531124-6 | 156-21 | 531720-6 |
| 50 | 2.755 69.98 | 2.465 62.61 | 1.800 45.72 | — | 156-05 | 531719-5 | 531124-5 | 156-20 | 531720-5 |
| 40 | 2.380 60.45 | 2.090 53.09 | 1.425 36.2 | — | 156-04 | 531719-4 | 531124-4 | 156-19 | 531720-4 |
| 30 | 2.005 50.93 | 1.715 43.56 | 1.050 26.67 | — | 156-03 | 531719-3 | 531124-3 | 156-18 | 531720-3 |
| 20 | 1.630 41.4 | 1.340 32.04 | .675 17.15 | — | 156-02 | 531719-2 | — | 156-17 | 531720-2 |
| 10 | 1.255 31.88 | .965 24.51 | .300 7.62 | — | 156-01 | 531719-1 | — | 156-16 | 531720-1 |

For drawings, technical data or samples, contact your AMP sales engineer or call the AMP Product Information Center 1-800-522-3752. Dimensions are in inches and millimeters unless otherwise specified. Values in brackets are metric equivalents. Specifications subject to change. Consult AMP Incorporated for latest specifications.