

4

3

2

1

THIS DRAWING IS UNPUBLISHED.

RELEASED FOR PUBLICATION

AUG 2006

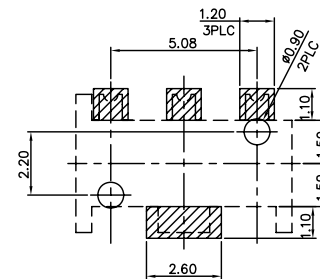
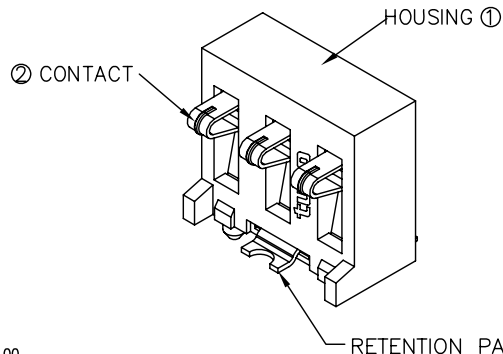
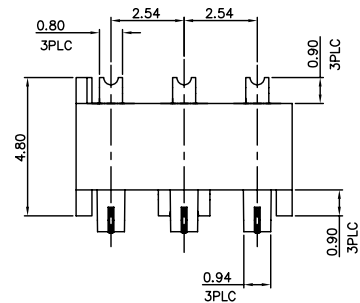
© COPYRIGHT BY TYCO ELECTRONICS CORPORATION.

ALL RIGHTS RESERVED.

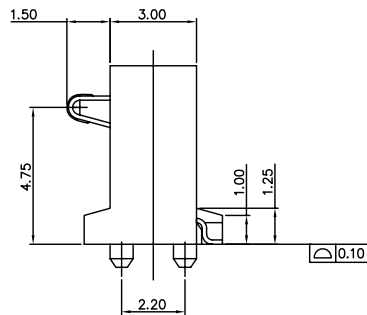
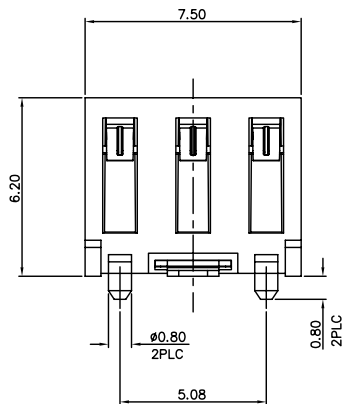
LOC DW DIST

REVISIONS

P	LTR	DESCRIPTION	DATE	DWN	APVD
B		REVISED (ECR-09-010273)	06MAY09	FY	WK

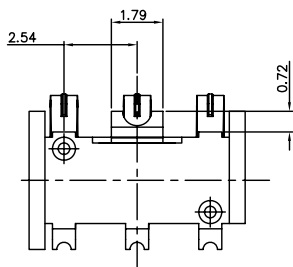


RECOMMENDED PDA LAYOUT
 <<TOP VIEW>>
 PCB TOLERANCE : ±0.05



NOTES:

- MATERIAL:
 - HOUSING: THERMOPLASTIC, HIGH TEMP, WITH 30% G/F, UL94V-0
 - CONTACT: PHOSPHOR BRONZE.
 - RETENTION PAD: BRASS
- FINISH:
 - CONTACT: 0.254mm[10m²] MIN. AU PLATING ON OVERALL, 1.27 mm[50m²] MIN. NICKEL UNDERPLATED OVERALL.
 - RETENTION PAD: 3.048mm[120m²] MIN. BRIGHT TIN PLATING ON SOLDER TAILS, 2.032mm[80m²] MIN. NICKEL UNDERPLATED OVERALL.
- RECOMMENDED PCB THICKNESS: 1.0mm
- REFLOW SOLDER CAPABLE TO 260°C PER TE SPEC. 109-201, CONDITION B.



1775324-1
 PART NUMBER

THIS DRAWING IS A CONTROLLED DOCUMENT.		DWN F. YANG 06MAY2009	Tyco Electronics Corporation Taipei, Taiwan													
DIMENSIONS: MM		CHK S. CHIEN 06MAY2009	NAME													
TOLERANCES UNLESS OTHERWISE SPECIFIED:		APVD W. KODAMA 06MAY2009	BATTERY CONN, 3POS, 2.5mm PITCH, R/A													
<table border="0"> <tr><td>0 PLC</td><td>± -</td></tr> <tr><td>1 PLC</td><td>± 0.30</td></tr> <tr><td>2 PLC</td><td>± 0.25</td></tr> <tr><td>3 PLC</td><td>± -</td></tr> <tr><td>4 PLC</td><td>± -</td></tr> <tr><td>ANGLES</td><td>± 3'</td></tr> </table>		0 PLC	± -	1 PLC	± 0.30	2 PLC	± 0.25	3 PLC	± -	4 PLC	± -	ANGLES	± 3'	PRODUCT SPEC 108-57582	QUALIFICATION TEST REPORT 501-57675	RESTRICTED TO
0 PLC	± -															
1 PLC	± 0.30															
2 PLC	± 0.25															
3 PLC	± -															
4 PLC	± -															
ANGLES	± 3'															
MATERIAL SEE NOTE		FINISH SEE NOTE	WEIGHT 0.168 GRAMS	SCALE A3 00779 ©=1775324												
CUSTOMER DRAWING			SHEET 1 of 3	REV B												

4

3

2

1

THIS DRAWING IS UNPUBLISHED.

RELEASED FOR PUBLICATION

AUG 2006

© COPYRIGHT BY TYCO ELECTRONICS CORPORATION.

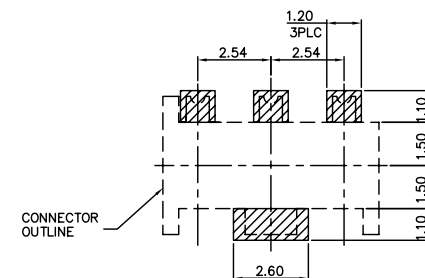
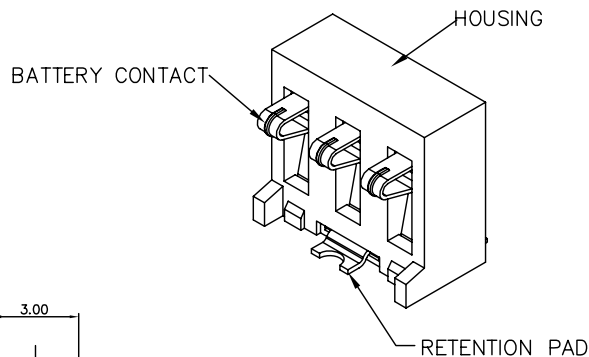
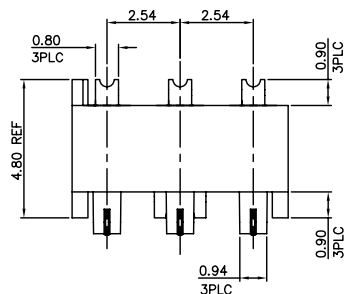
ALL RIGHTS RESERVED.

LOC DW

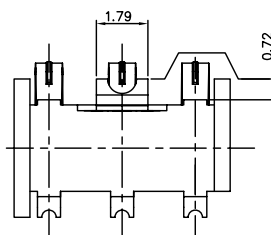
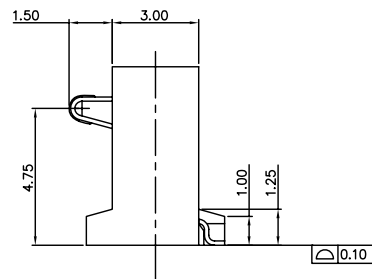
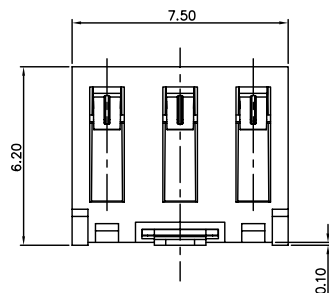
DIST

REVISIONS

P	LTR	DESCRIPTION	DATE	DWN	APVD
		SEE SHEET 1.			



RECOMMENDED PCB LAYOUT (TOP VIEW, TOLERANCE : ±0.05)



NOTES:

- MATERIAL:
 - 1.1 HOUSING: THERMOPLASTIC, HIGH TEMP, WITH 30% G/F, UL94V-0
 - 1.2 CONTACT: PHOSPHOR BRONZE.
 - 1.3 RETENTION PAD: BRASS
- FINISH:
 - 2.1 CONTACT: 0.254mm[10m²] MIN. AU PLATING ON OVERALL, 1.27 mm[50m²] MIN. NICKEL UNDERPLATED OVERALL.
 - 2.2 RETENTION PAD: 3.048mm[120m²] MIN. BRIGHT TIN PLATING ON SOLDER TAILS, 2.032mm[80m²] MIN. NICKEL UNDERPLATED OVERALL.
- REFLOW SOLDER CAPABLE TO 260°C PER TE SPEC. 109-201, CONDITION B.

1-1775324-1
PART NUMBER

THIS DRAWING IS A CONTROLLED DOCUMENT.		DWN	Tyco Electronics Corporation Taipi, Taiwan													
DIMENSIONS: MM		CHK	NAME													
TOLERANCES UNLESS OTHERWISE SPECIFIED:		APVD	BATTERY CONN, 3POS, 2.5mm PITCH, R/A													
<table border="0"> <tr><td>0 PLC</td><td>± -</td></tr> <tr><td>1 PLC</td><td>± 0.30</td></tr> <tr><td>2 PLC</td><td>± 0.20</td></tr> <tr><td>3 PLC</td><td>± -</td></tr> <tr><td>4 PLC</td><td>± -</td></tr> <tr><td>ANGLES</td><td>± 3°</td></tr> </table>		0 PLC	± -	1 PLC	± 0.30	2 PLC	± 0.20	3 PLC	± -	4 PLC	± -	ANGLES	± 3°	PRODUCT SPEC	SIZE	CAGE CODE
0 PLC	± -															
1 PLC	± 0.30															
2 PLC	± 0.20															
3 PLC	± -															
4 PLC	± -															
ANGLES	± 3°															
MATERIAL SEE NOTE		QUALIFICATION TEST REPORT	DRAWING NO	RESTRICTED TO												
FINISH SEE NOTE		WEIGHT 0.168 GRAMS	A300779	G=1775324												
		CUSTOMER DRAWING	SCALE	SHEET 2 of 3												
				REV B												

4

3

2

1

THIS DRAWING IS UNPUBLISHED.

RELEASED FOR PUBLICATION

AUG ,2006 .

© COPYRIGHT BY TYCO ELECTRONICS CORPORATION.

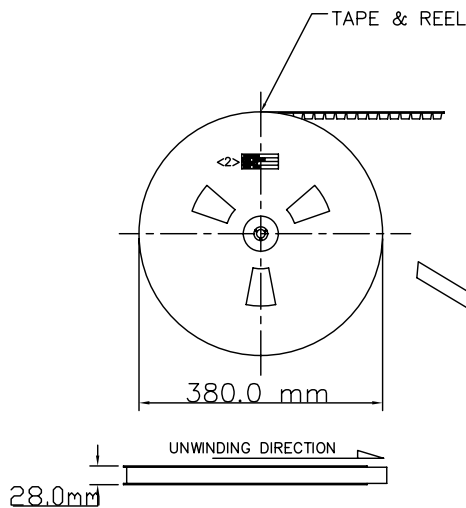
ALL RIGHTS RESERVED.

LOC DW

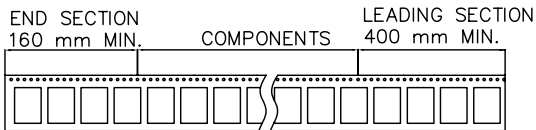
DIST

REVISIONS

P	LTR	DESCRIPTION	DATE	DWN	APVD
		SEE SHEET 1.			

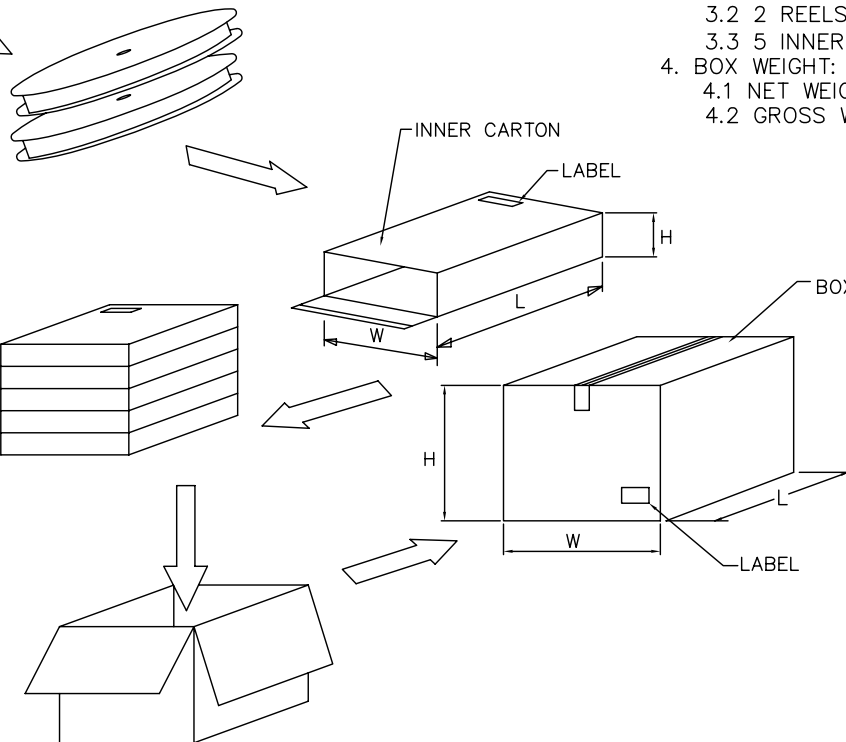
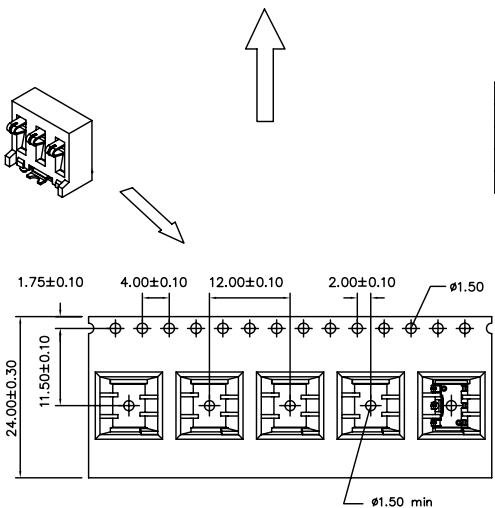


NOTICE:



NOTES:

- MATERIAL:
 - REEL: PS
 - CARRIER: PS
 - COVER TAPE: PE
- DIMENSION:
 - REEL: DIA=380mm, W=36mm
 - INNER CARTON: L=390mm, W=390mm, H=87mm
 - BOX: L=420mm, W=400mm, H=460mm
- QUANTITY:
 - 1000 PCS/REEL
 - 2 REELS/INNER CARTON: (2000 PCS)
 - 5 INNER CARTONS/BOX: (10000 PCS)
- BOX WEIGHT:
 - NET WEIGHT: 11Kg
 - GROSS WEIGHT: 12Kg



THIS DRAWING IS A CONTROLLED DOCUMENT.		DWN		Tyco Electronics Corporation	
CHK		CHK		Tyco Electronics Taipei, Taiwan	
APVD		APVD		NAME	
PRODUCT SPEC		PRODUCT SPEC		BATTERY CONN, 3POS, 2.5mm PITCH, R/A	
APPLICATION SPEC		APPLICATION SPEC		RESTRICTED TO	
MATERIAL		WEIGHT		SIZE CAGE CODE DRAWING NO	
FINISH		CUSTOMER DRAWING		A3 00779 G=1775324	
		SCALE		SHEET 3 of 3	
				REV B	