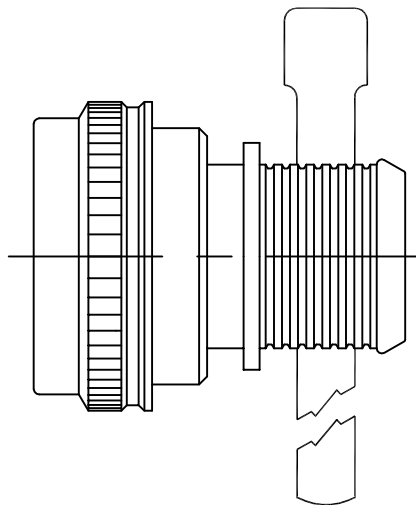


THIS DRAWING AND THE INFORMATION SET FORTH HEREON ARE THE PROPERTY OF TYCO ELECTRONICS CORPORATION, AND ARE TO BE HELD IN TRUST AND CONFIDENCE. PUBLICATION, DUPLICATION, DISCLOSURE, OR USE FOR ANY PURPOSE NOT EXPRESSLY AUTHORIZED IN WRITING BY TYCO ELECTRONICS IS PROHIBITED.

REVISIONS

LTR	DESCRIPTION	DATE	APPROVED
A	INITIAL RELEASE PER DCR R050106	2/28/05	MPIOZET
B	PER ECO-08-024758	10/6/08	MPIOZET



CODE 41 BAND STRAP ADAPTER

NOTES

- THIS PRODUCT IS DESIGNED TO TERMINATE A BRAIDED CABLE SHIELD BY MEANS OF A BAND STRAP AND A HEAT SHRINKABLE LIPPED BOOT TO A CONNECTOR.
- SEE CH00-0250-017 FOR ORDERING INFORMATION, MODIFICATIONS AND ADDITIONAL DIMENSIONS.
- SEE DRAWING BND-1225S FOR BAND STRAP INFORMATION AND DIMENSIONS.
- ADAPTER TO BE PERMANENTLY MARKED WITH CODE IDENTIFICATION NUMBER AND FULL BASIC PART NUMBER (e.g. 06090-BND41AB00-1812A) INCLUDING MODIFICATION CODES, EVEN IF A BAND IS NOT SUPPLIED WITH THE ADAPTER.
- ALL ENTRY SIZES ARE SHOWN IN TABLE II. MAXIMUM ENTRY SIZES ARE AS SHOWN IN TABLE I. FOR LARGER ENTRY SIZES THAN THE MAXIMUM, A TYPE II ADAPTER MAY BE SUPPLIED. SEE CH00-0250-017 FOR FURTHER DETAILS.
- ADAPTOR MATES TO: MIL-C-38999 SERIES I AND II, CLASS E AND T, MS27466, MS27467, MS27468, MS27472, MS27473, MS27474, MS27479, MS27480, MS27481, MS27484, MS27497, MS27652, MS27653, AND MS27656 CONNECTORS.

If this document is printed it becomes uncontrolled. Check for the latest revision

©2005-2008 Tyco Electronics Corporation. All rights reserved.

CUSTOMER DRAWING

UNLESS OTHERWISE SPECIFIED
DIMENSIONS ARE IN INCHES.
METRIC DIMENSIONS ARE
IN BRACKETS.

DECIMALS

.XXX ± _____

.XX ± _____

ANGLES _____

WEIGHT

DRAWN MFORONDA 3/21/05

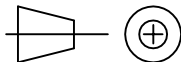
REVISED --- ---

CHECKED --- ---

APPROVED MPIOZET 3/21/05

CAD NAME: BND41Aa

THIRD ANGLE
PROJECTION



Tyco Electronics

Raychem Adapters

300 Constitution Drive
Menlo Park, CA 94025 U.S.A

TITLE

BAND STRAP ADAPTER

SIZE

CODE IDENT. NO.

DWG. NO.

REV

A

06090

BND41A

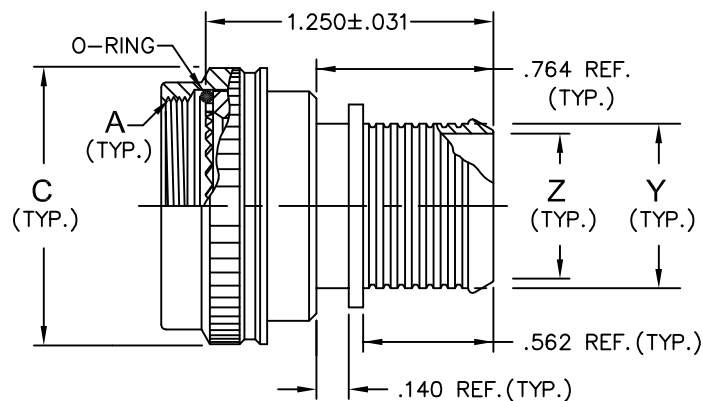
B

DO NOT SCALE THIS DRAWING

SHEET 1 OF 3

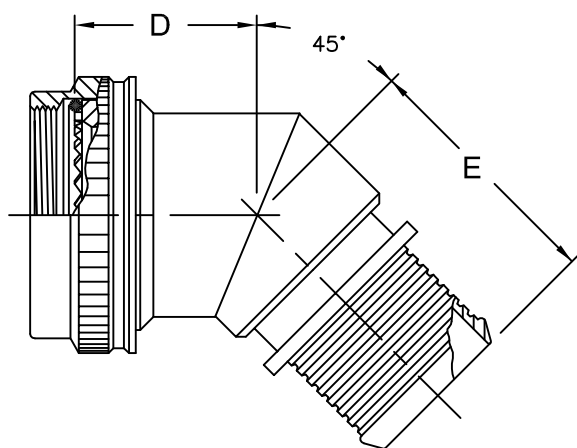
2

1



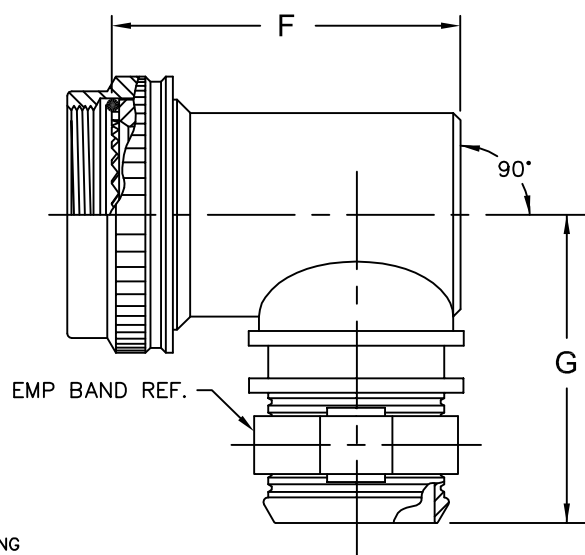
STRAIGHT ADAPTER

CODE 00



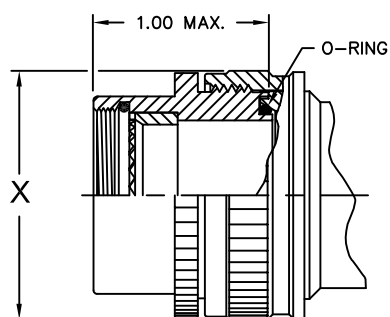
45° ADAPTER

CODE 45



90° ADAPTER

CODE 90



TYPE II MODIFICATION

SEE NOTE 5

CUSTOMER DRAWING

If this document is printed it becomes uncontrolled. Check for the latest revision

©2005–2008 Tyco Electronics Corporation. All rights reserved.

SIZE	CODE IDENT. NO.	DWG. NO.	REV
A	06090	BND41A	B
DO NOT SCALE THIS DRAWING		CAD NAME: BND41Ab	SHEET 2 OF 3

2

1

TABLE I

ORDER NO.	SHELL SIZE		A UNIFIED THD. CLASS 2B	C MAX. DIA.	D MAX.	E MAX.	F MAX.	G MAX.	BAND MAX. 1 PIECE ENTRY
	SER. II	SER. I							
0 8	8	9	.438-28	.703	.52	1.15	.84	1.28	0 4
1 0	10	11	.562-24	.827	.54	1.17	.97	1.34	0 6
1 2	12	13	.688-24	.953	.57	1.20	1.09	1.41	0 8
1 4	14	15	.812-20	1.077	.59	1.23	1.22	1.47	1 0
1 6	16	17	.938-20	1.203	.62	1.25	1.34	1.53	1 2
1 8	18	19	1.062-18	1.327	.63	1.26	1.41	1.59	1 3
2 0	20	21	1.188-18	1.453	.66	1.29	1.53	1.66	1 5
2 2	22	23	1.312-18	1.577	.68	1.32	1.66	1.72	1 7
2 4	24	25	1.438-18	1.703	.71	1.34	1.78	1.78	1 9

TABLE II

ENTRY ORDER NO.	EMP BAND		
	Z	Y	X
	+.010 -.020 DIA.	±.015 DIA.	MAX DIA.
0 2	.125	.209	N/A
0 3	.188	.271	N/A
0 4	.250	.334	N/A
0 5	.312	.396	.734
0 6	.375	.459	.734
0 7	.438	.521	.858
0 8	.500	.584	.858
0 9	.562	.646	N/A
1 0	.625	.709	1.112
1 2	.750	.834	1.345
1 4	.875	.959	1.345
1 6	1.000	1.084	1.594
1 8	1.125	1.209	1.594
2 0	1.250	1.334	1.969
2 2	1.375	1.459	2.219
2 4	1.500	1.584	2.219

CUSTOMER DRAWING

If this document is printed it becomes uncontrolled. Check for the latest revision

© 2005-2008 Tyco Electronics Corporation. All rights reserved.

SIZE A	CODE IDENT. NO. 06090	DWG. NO. BND41A	REV B
DO NOT SCALE THIS DRAWING		CAD NAME: BND41Ac	SHEET 3 OF 3