

AMP NETCONNECT Enhanced Category 5 System*

Category 5e Cable

This high-performance cable exceeds the TIA's requirements for Category 5e. Typical crosstalk performance (NEXT, PSNEXT, ELFEXT and PSELFEXT) exceeds TIA requirements by 3 dB or more. Additionally, the cable exceeds TIA requirements for SRL and skew, resulting in less noise from reflected signals and elimination of timing errors in multipair applications. The 24 AWG four-pair cable is available in riser- and plenum-rated versions. The cable is packaged in 1000-foot lengths either on reels or easy-payout reel-in-a-box. To reduce scrap during installation, longer-length 2000- and 3000-foot reels are available on request. The outer jacket is available in white, gray, blue or yellow.

Part Number	Description
57825-x	4-pair, 24 AWG, Plenum, CMP
57826-x	4-pair, 24 AWG, Non-Plenum, CMR

Note: x denotes color and packaging

1 =	White; 1000-foot reel
2 =	White; 1000-foot reel-in-a-box
3 =	Gray; 1000-foot reel
4 =	Gray; 1000-foot reel-in-a-box
5 =	Blue; 1000-foot reel
6 =	Blue; 1000-foot reel-in-a-box
7 =	Yellow; 1000-foot reel
8 =	Yellow; 1000-foot reel-in-a-box

AMP NETCONNECT ENHANCED CATEGORY 5 CABLE

faceplates, including the 110Connect and HideAway outlets, office boxes, FLEX-MODE modular furniture outlets and Access Floor Workstation Modules. (See data sheet 1308360.)

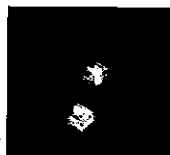


Part Number	Description
406372-x	Enhanced Cat 5, Non-keyed, 4-pair UTP, Universal Wiring
406374-x	Enhanced Cat 5, Keyed, 4-pair UTP, Universal Wiring
569332-1	2-Pair Stuffer Cap (Quantity: 50 per bag)

Note: x denotes color:
 1=Almond 4=Gray 7=Red 9=Green
 2=Black 5=Orange 8=Yellow 1-C=Violet
 3=White 6=Blue

Enhanced Category 5 Patch Cords

Patented AMP NETCONNECT manufacturing techniques create cable assemblies that provide not only superior performance to any yet achieved outside the test labs, but also more consistent, controlled performance than standard assemblies.



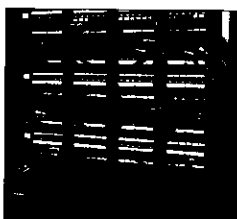
Part Number	Description
x-406483-x	4-pair 24 AWG stranded, black cable, with black snagless boots and blue identification labels. Additional colors available.

Note: x denotes length

1=6'	5=5'	9=9'	13=16'
2=2'	6=6'	10=10'	20=20'
3=3'	7=7'	12=12'	30=30'
4=4'	8=8'	14=14'	50=50'

110Connect Patch Panels

Ready-to-install patch panels available in 12- to 96-port configurations also offer universal wiring with the simple installation of a reversible

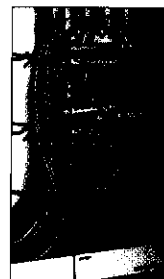


color-coded strip on the back side of each 6-port module. The panels are arranged in 6-port modules to make wire management and identification easier and support the use of either the single-wire or 5-pair tool for quicker installation.

Part Number	Description
406390-1	12-port Enhanced Cat 5, Universal Wiring, Mounts to 89D bracket included
406330-1	24-port, Enhanced Cat 5, Universal Wiring, 1.75 (1 RMS) height
406331-1	48-port, Enhanced Cat 5, Universal Wiring, 3.50 (2 RMS) height
406332-1	96-port, Enhanced Cat 5, Universal Wiring, 7.00 (4 RMS) height

110Connect XC Cross-Connect

These cross-connect frame kits offer a reliable, economical means for achieving high-density cross connections when combined with the AMP NETCONNECT 110Connect XC Patch Cords. This provides a means to ensure and maintain enhanced performance not only on the day of installation but throughout the numerous moves, adds, and changes that the system will experience. Available in easy-to-order-and-install 300- or 900-pair kits which include a metal back frame, wiring blocks, connecting blocks, cable management troughs, and designation strips.



Part Number	Description
569854-1	300-pair frame kit, with 4- & 5-pair connecting blocks
569855-1	300-pair frame kit, with 5-pair connecting blocks
569857-1	900-pair frame kit, with 4- & 5-pair connecting blocks
569858-1	900-pair frame kit with 5-pair connecting blocks
569851-1	300-pair vertical cable management frame
569852-1	900-pair vertical cable management frame

110Connect Jacks

This eight-position modular jack offers enhanced performance at component, link and channel levels. Additionally, to simplify installation and to offer increased flexibility, the jack allows for universal termination in either the T568A or T568B wiring pattern without field installation of labels. The jack is compatible with existing AMP NETCONNECT

*All AMP NETCONNECT Enhanced Category 5 products meet or exceed all TIA Category 5e performance requirements.

In the U.S. 1-800-553-0938
 Canada 905-475-6222
 Mexico 525-729-0400
 South and Central Americas 54-11-4733-2200
 www.ampnetconnect.com
 e-mail: networking_help@tycoelectronics.com

tyco
 Electronics