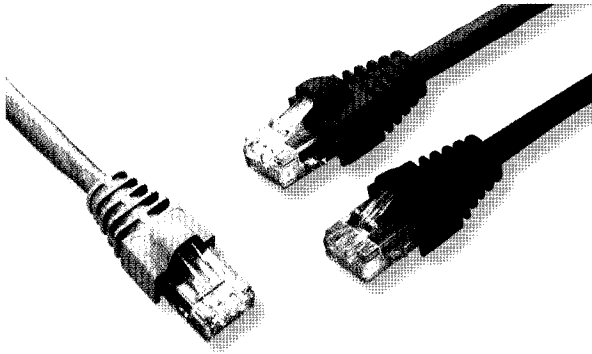


Category 6 Patch Cable Assemblies



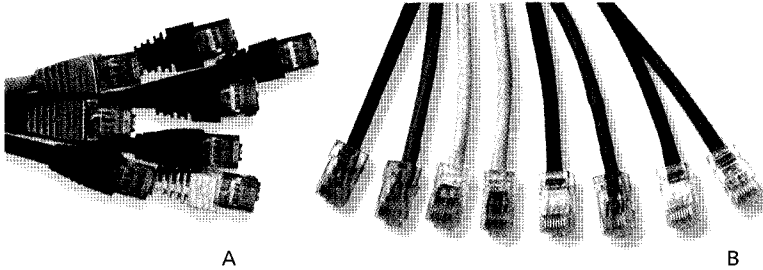
Product Facts

- :: Meet or exceed Category 6 performance standards
- :: 4-Pair stranded Unshielded or Shielded, 24 AWG conductors
- :: Non-plenum (CMR rated)
- :: Shielded cable Assembly is available in white only
- :: Color-matched snagless boots
- :: Universal wiring (T568A/T568B)

Description	Part Number									
	Black	Gray	Blue	Green	Red	White	Yellow	Orange	Violet	
Standard Unshielded	219884-X	219885-X	219886-X	219887-X	219888-X	219889-X	219890-X	219891-X	1499023-X	
Standard Shielded	-	-	-	-	-	1499480-X	-	-	-	

X denotes length in feet: -2 = 2, -3 = 3, -4 = 4, -5 = 5, -6 = 6, -7 = 7, -8 = 8, -9 = 9, 1-0 = 10, 1-2 = 12, 1-4 = 14, 1-5 = 15, 1-6 = 16, 2-0 = 20, 2-5 = 25, 3-0 = 30, 4-0 = 40, 5-0 = 50

Category 5e Patch Cable Assemblies



Product Facts

- :: Meet or exceed Category 5e performance standards
- :: 4-Pair stranded unshielded, 24 AWG conductors
- :: Non-Plenum (CMR rated)
- :: Booted cable assemblies include color-matched snagless boots
- :: Universal wiring (T568A/T568B)

Description	Figure	Part Number									
		Black	Gray	Blue	Green	Red	White	Yellow	Orange	Violet	
Booted	A	406483-X	219241-X	219242-X	219243-X	219244-X	219245-X	219246-X	219184-X	1499094-X	
Bootless	B	1499110-X	1499111-X	1499112-X	1499113-X	1499114-X	1499115-X	1499116-X	1499117-X	1499118-X	

X denotes length in feet: -2 = 2, -3 = 3, -4 = 4, -5 = 5, -6 = 6, -7 = 7, -8 = 8, -9 = 9, 1-0 = 10, 1-2 = 12, 1-4 = 14, 1-5 = 15, 1-6 = 16, 2-0 = 20, 2-5 = 25, 3-0 = 30, 4-0 = 40, 5-0 = 50