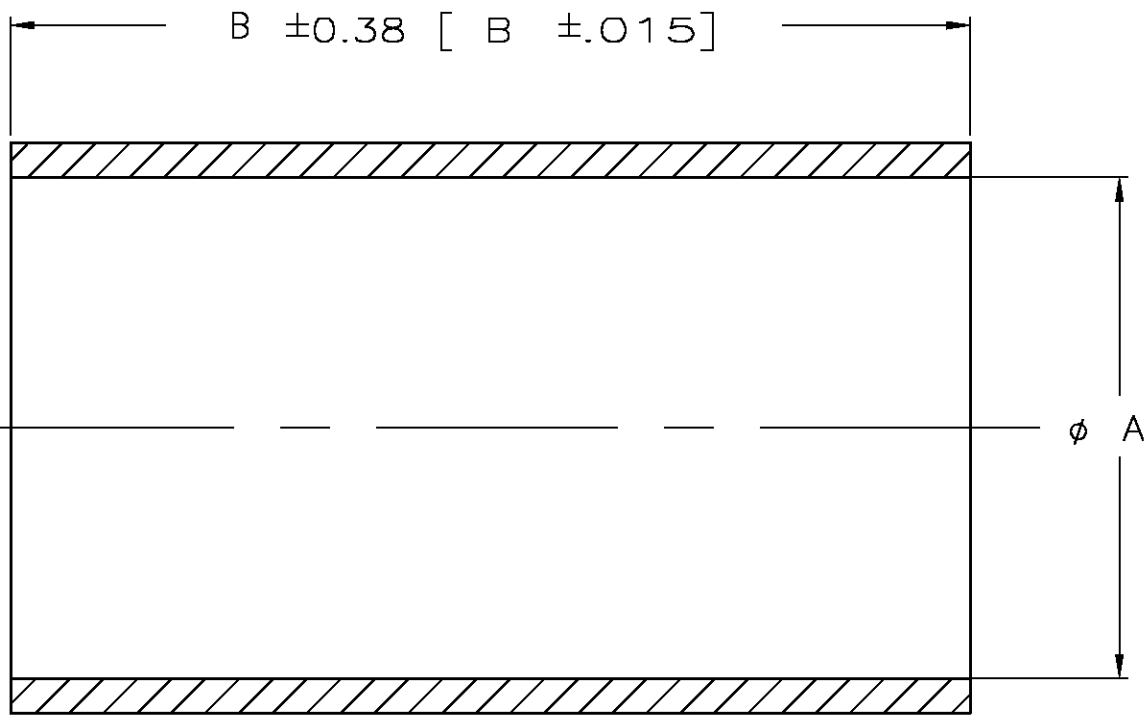


THIS DRAWING IS UNPUBLISHED. RELEASED FOR PUBLICATION
 © COPYRIGHT BY TYCO ELECTRONICS CORPORATION. ALL RIGHTS RESERVED.

LOC	DIST	REVISIONS					
AJ	16	P	LTR	DESCRIPTION	DATE	DWN	APVD
			Y	REV PER OS14-0114-04	26APR04	JDP	JL

- 1 COPPER PER QQ-C-576 OR ASTM-B-188 OR BRASS PER ASTM-B-36.
- 2 TIN-LEAD PL PER ASTM-B-545
2.54µm [.000100] MIN THK, WITH SUPPLEMENTAL ANTI-FRETTING LUBRICANT.
- 3 SILVER PL PER QQ-S-365
5.08µm [.000200] MIN THK
- 4 COPPER PER QQ-C-576 OR ASTM-B-188.
- 5 TIN PLATE PER ASTM-B-545
2.54µm [.000100] MIN THK, WITH SUPPLEMENTAL ANTI-FRETTING LUBRICANT.



	12.70 [.500]	6.81 [.268]	5	1	9-221132-9
	15.24 [.600]	10.67 [.420]	5	1	9-221132-8
SUPERSEDED BY 9-221132-4	12.70 [.500]	5.84 [.230]	5	1	9-221132-7
	12.70 [.500]	4.47 [.176]	5	1	9-221132-6
	15.24 [.600]	11.30 [.445]	5	1	9-221132-5
	12.70 [.500]	5.84 [.230]	5	1	9-221132-4
	12.70 [.500]	6.63 [.261]	5	1	9-221132-3
	12.70 [.500]	8.46 [.333]	5	1	9-221132-2
	12.70 [.500]	6.55 [.258]	5	4	9-221132-1
	12.70 [.500]	5.36 [.211]	5	1	9-221132-0
	12.70 [.500]	5.61 [.221]	5	1	8-221132-9
OBSOLETE	15.24 [.600]	10.67 [.420]	3	1	3-221132-7
	12.70 [.500]	6.81 [.268]	2	1	3-221132-6
	12.70 [.500]	4.47 [.176]	2	1	3-221132-3
	12.70 [.500]	5.61 [.221]	2	1	3-221132-0
	15.24 [.600]	11.30 [.445]	2	1	2-221132-9
	12.70 [.500]	5.84 [.230]	2	1	2-221132-6
	15.24 [.600]	10.67 [.420]	2	1	2-221132-3
	12.70 [.500]	6.63 [.261]	2	1	2-221132-0
OBSOLETE	12.70 [.500]	3.43 [.135]	3	1	1-221132-7
OBSOLETE	12.70 [.500]	6.55 [.258]	3	4	1-221132-4
OBSOLETE	12.70 [.500]	5.61 [.221]	3	1	1-221132-3
OBSOLETE	12.70 [.500]	5.36 [.211]	3	1	1-221132-0
	12.70 [.500]	8.46 [.333]	2	1	221132-9
	12.70 [.500]	6.55 [.258]	2	4	221132-6
	12.70 [.500]	5.36 [.211]	2	1	221132-3
	B	A	FINISH	MATERIAL	PART NUMBER

THIS DRAWING IS A CONTROLLED DOCUMENT.		DWN J.L.GROFT 1-5-90	Tyco Electronics Corporation Harrisburg, PA 17105-3608		
DIMENSIONS: MM [INCHES]		CHK R.E.RUTH 1/12/90	NAME		
		APVD -	PRODUCT SPEC		
TOLERANCES UNLESS OTHERWISE SPECIFIED:		APPLICATION SPEC	FERRULE		
0 PLC ± - 1 PLC ± - 2 PLC ± 0.13 [.005] 3 PLC ± - 4 PLC ± - ANGLES ± -		WEIGHT -	SIZE A3	CAGE CODE 00779	DRAWING NO C-221132
MATERIAL SEE NOTES	FINISH SEE NOTES	CUSTOMER DRAWING		RESTRICTED TO -	SCALE 10:1 SHEET 1 OF 1 REV Y