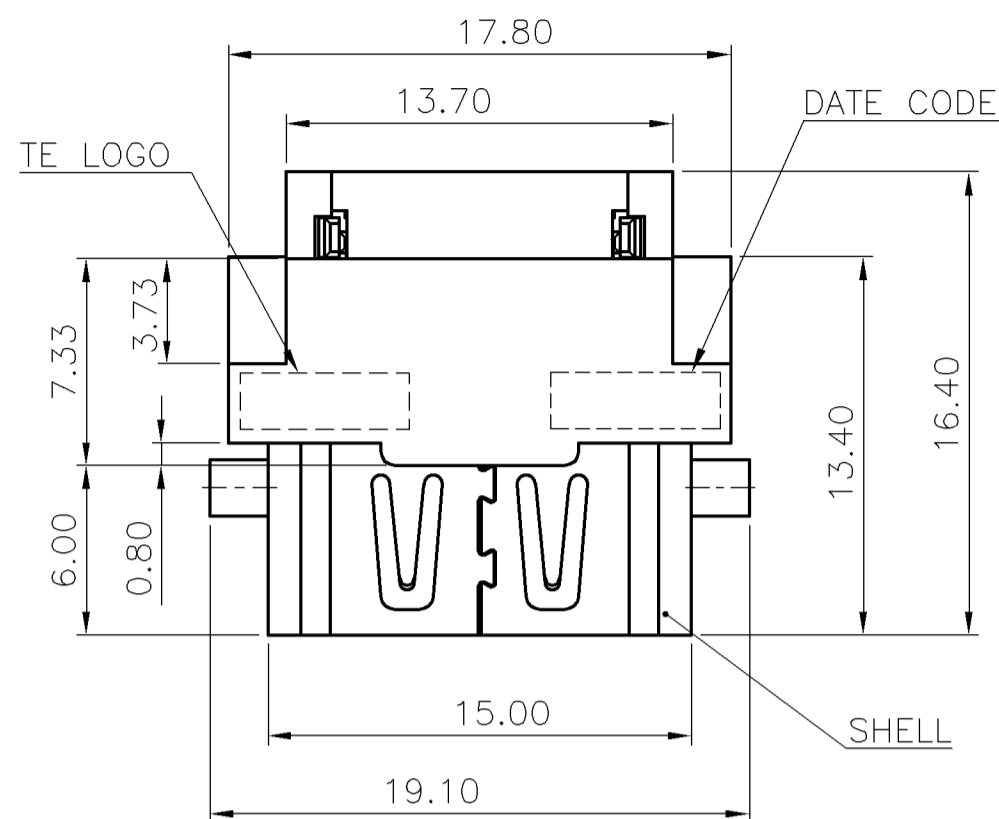
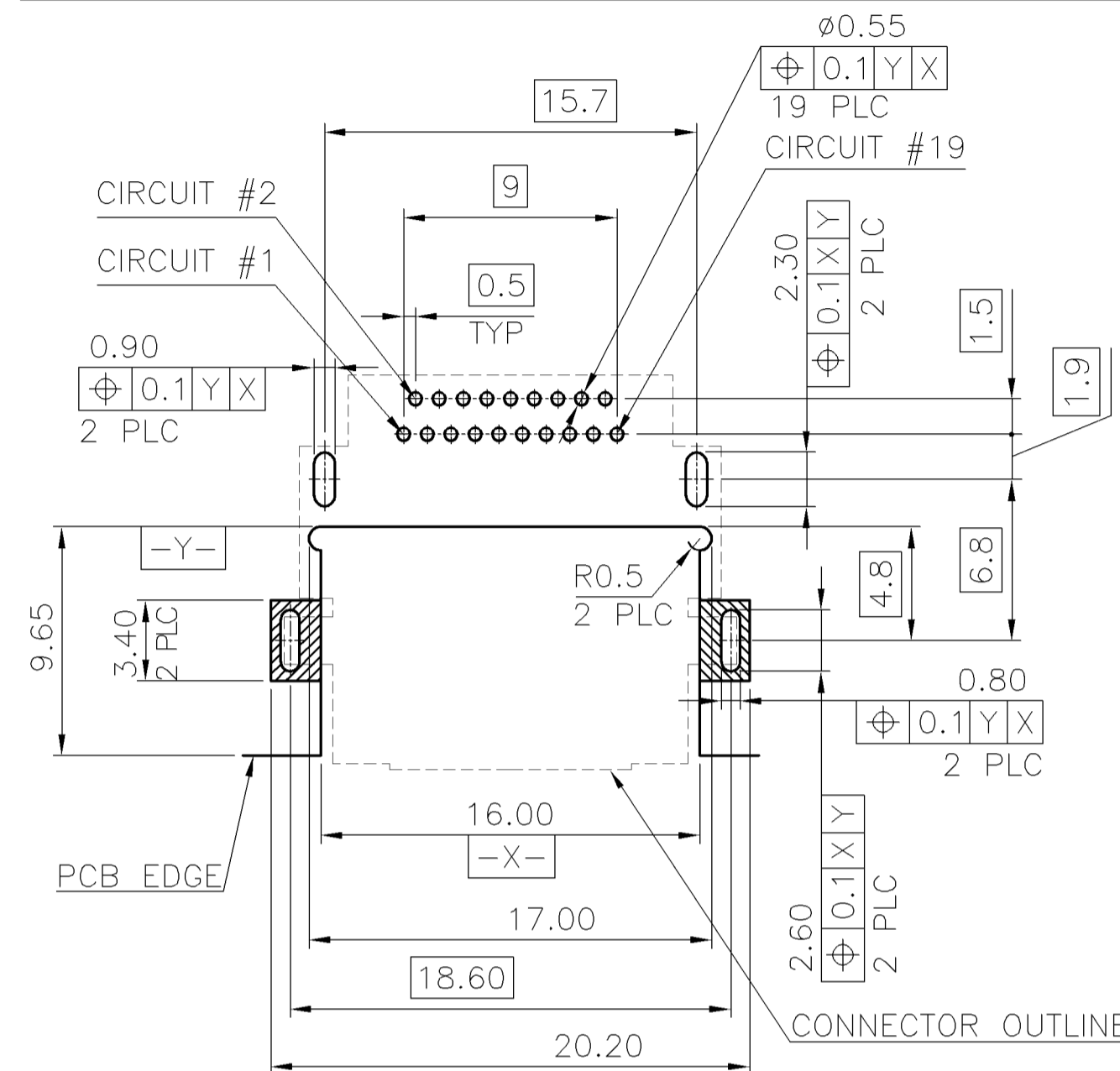
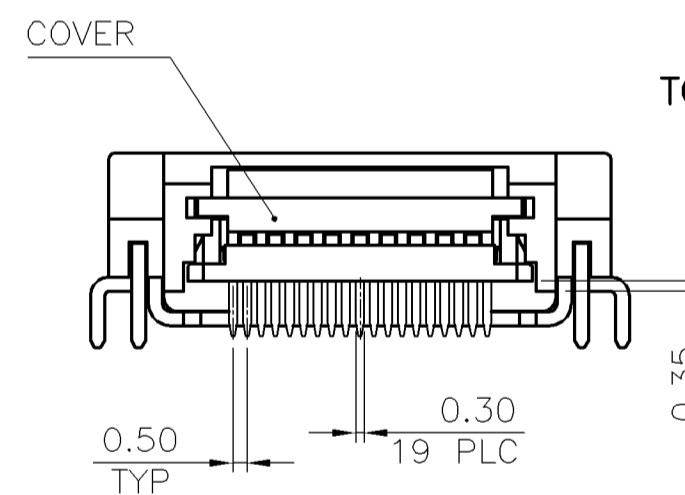
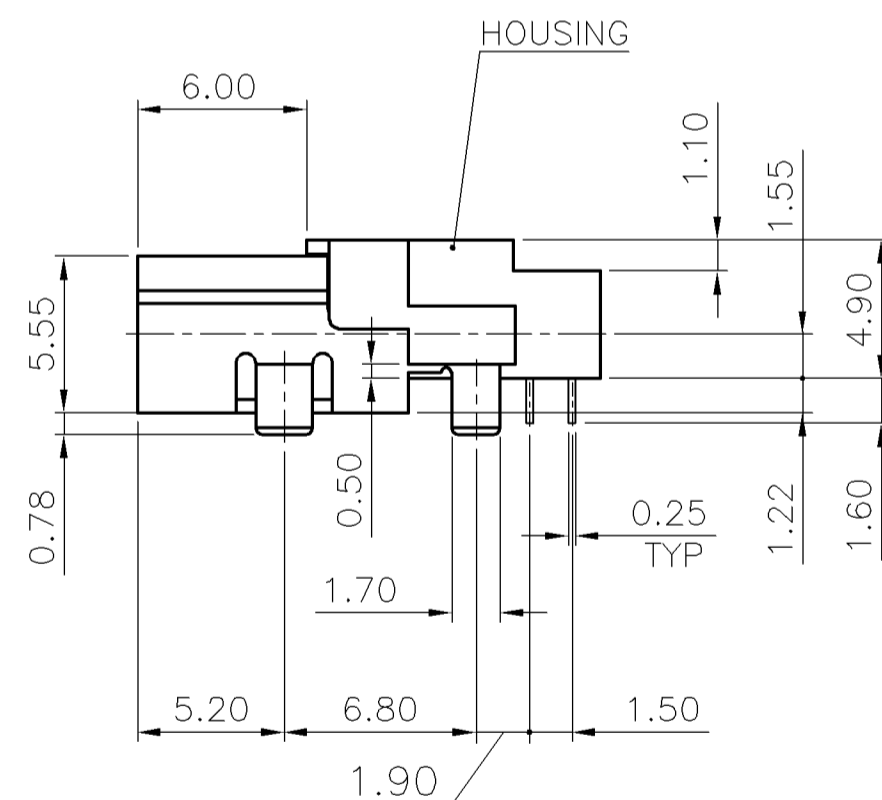
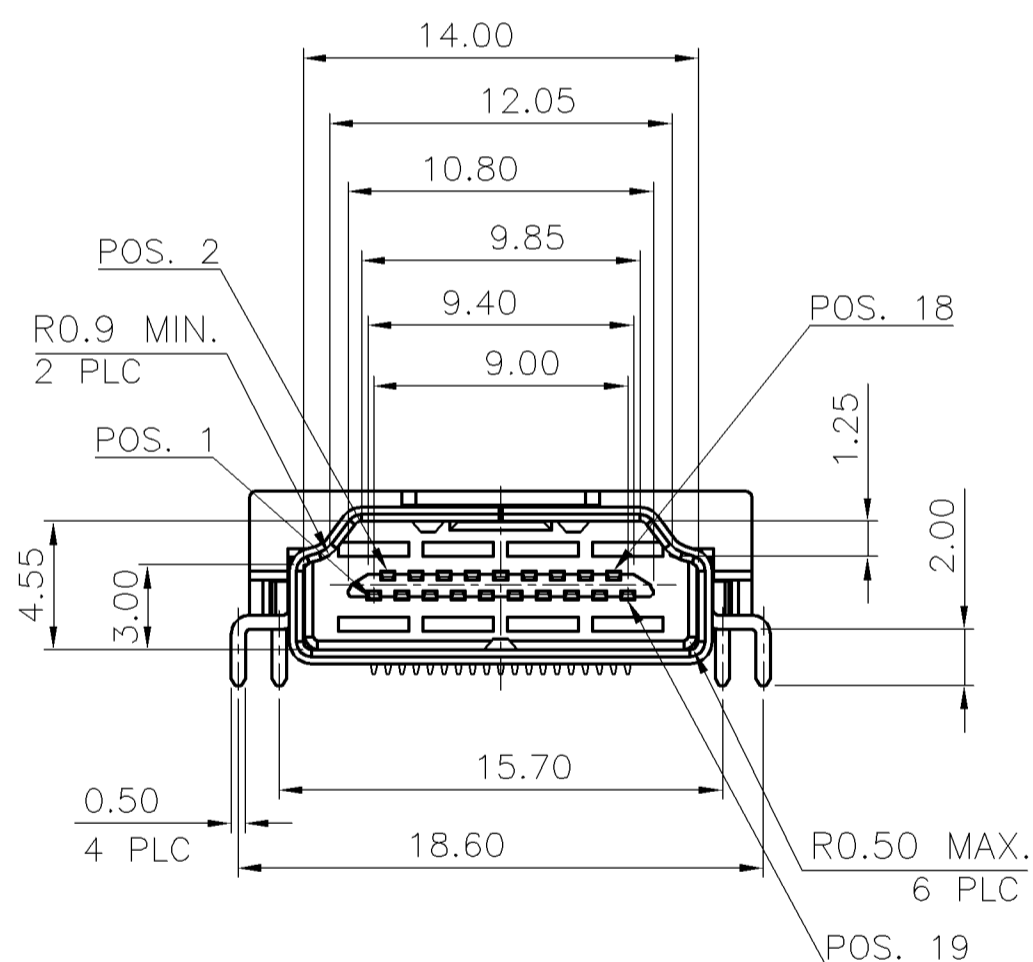
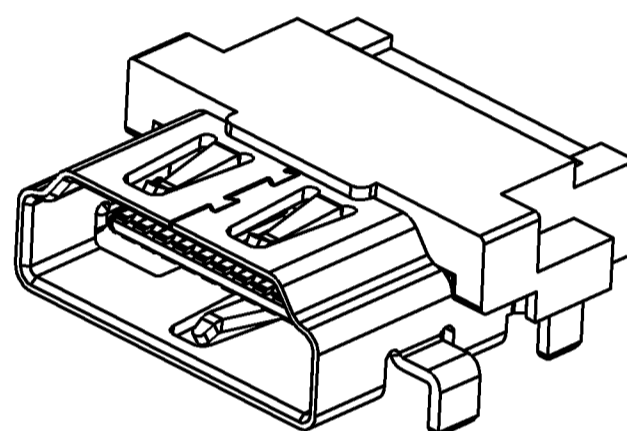


THIS DRAWING IS UNPUBLISHED. RELEASED FOR PUBLICATION
 © COPYRIGHT BY TYCO ELECTRONICS CORPORATION. ALL RIGHTS RESERVED.

LOC	DIST	REVISIONS					
DW	—	P	LTR	DESCRIPTION	DATE	DWN	APVD
		C		ECR-09-026881	09DEC09	AW	WK

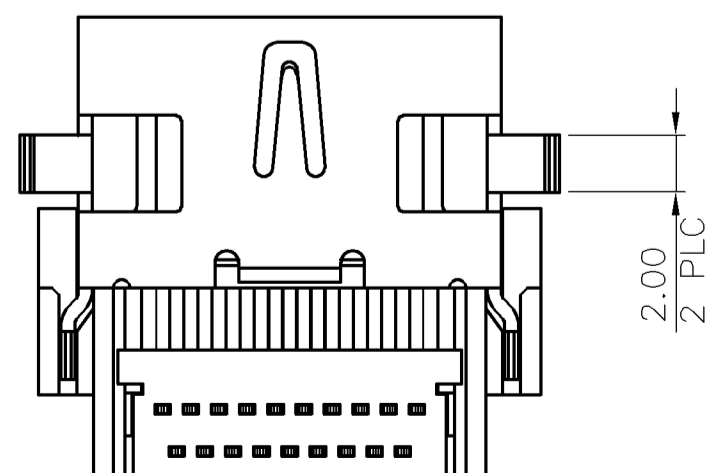


- NOTES:
- MATERIAL:**
 HOUSING: PA9T WITH 33% GF, UL 94V-0, BLACK COLOR.
 COVER: PA9T WITH 33% GF, UL 94V-0, BLACK COLOR.
 CONTACTS: BRASS.
 SHELL: BRASS.
 - FINISH:**
 CONTACTS: 0.254µm [10µ"] GOLD PLATING ON CONTACT AREA,
 2.54µm [100µ"] MIN. MATTE-TIN ON SOLDER TAIL,
 WITH ENTIRE CONTACT UNDERPLATED 1.27µm [50µ"]
 MIN. NICKEL.
 SHELL: 1.27µm [50µ"] MIN. NICKEL PLATED.
 - WAVE SOLDER CAPABLE TO 265°C PER TEC-109-202, CONDITION B.



TOLERANCE: ±0.05, THICKNESS: 1.2
 RECOMMENDED PCB LAYOUT
 (TOP VIEW)

1770956-1
 PART NUMBER



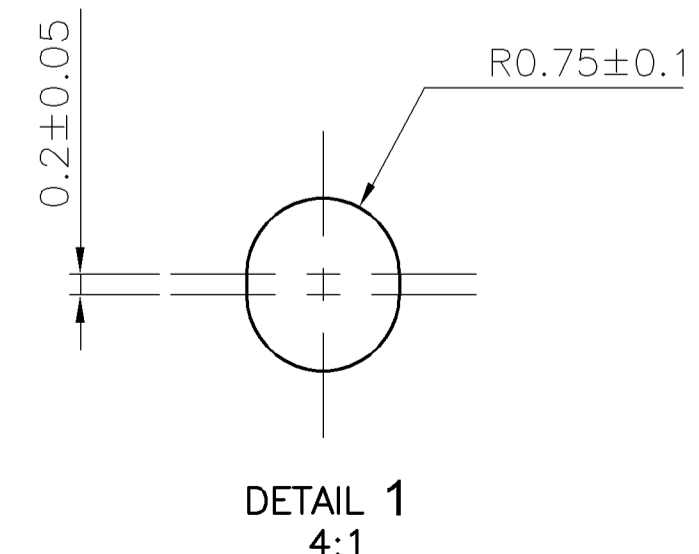
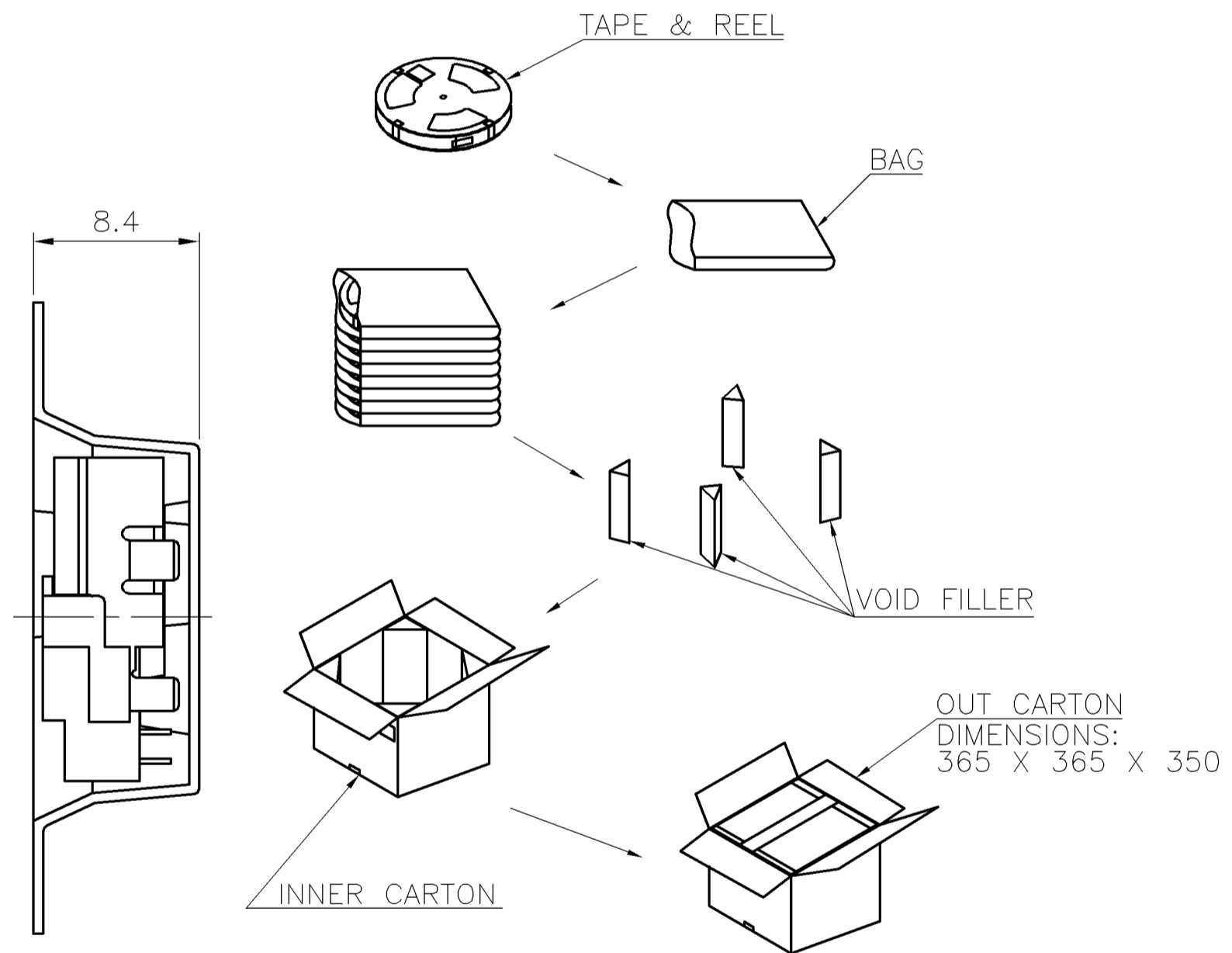
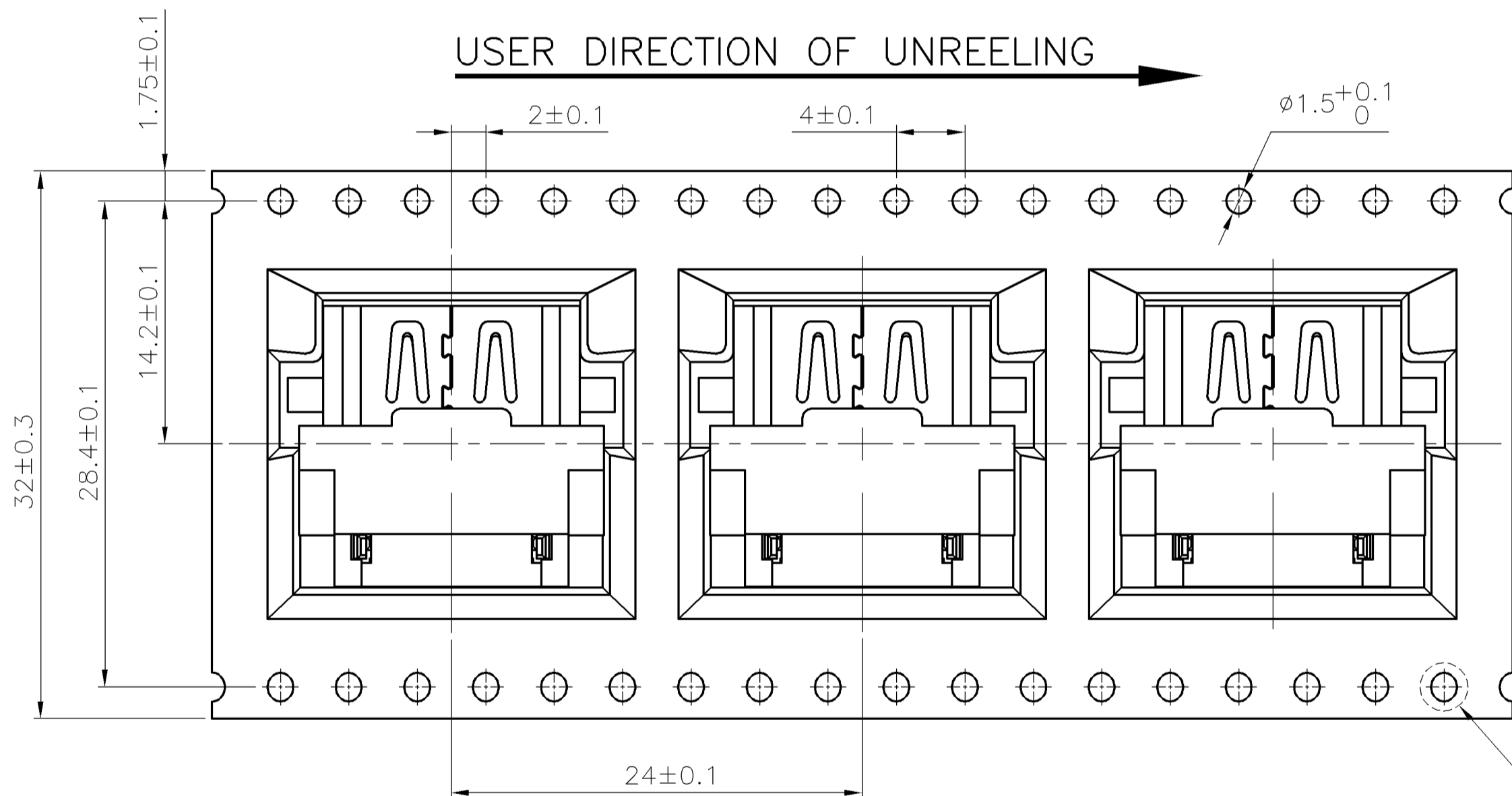
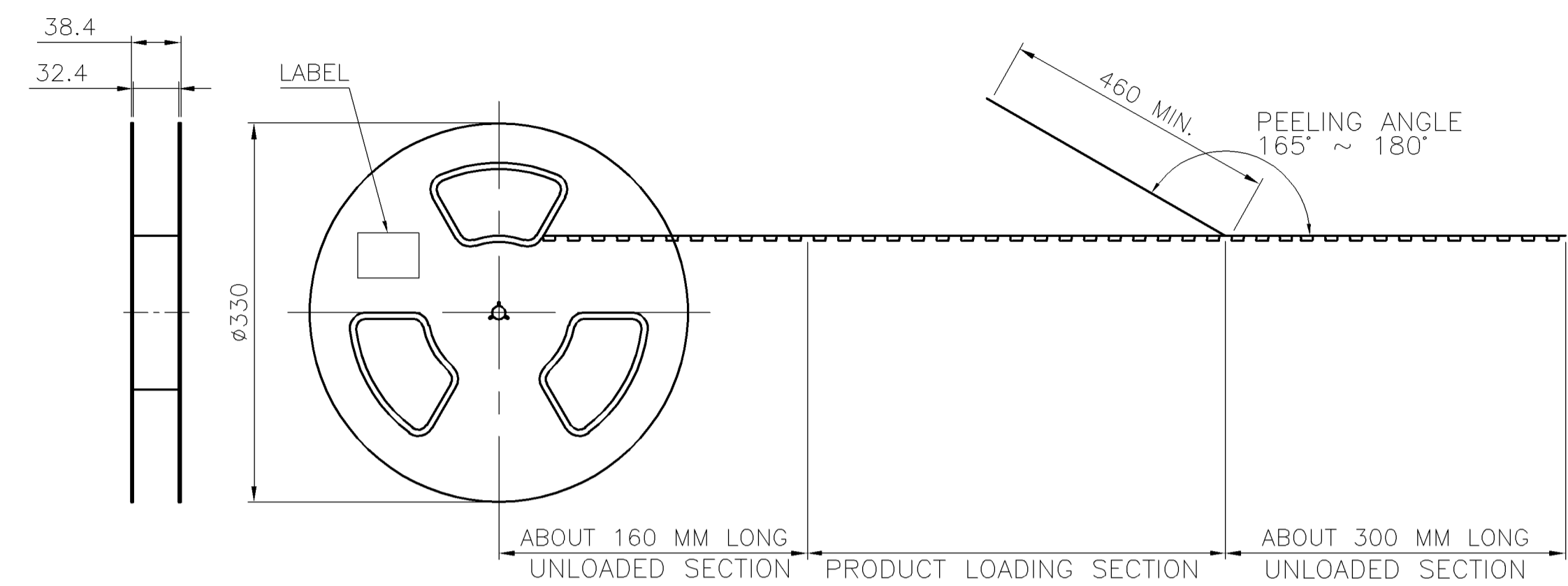
THIS DRAWING IS A CONTROLLED DOCUMENT.		DWN A. WU 10MAY2007	Tyco Electronics Corporation Taipei, Taiwan	
DIMENSIONS: MM	TOLERANCES UNLESS OTHERWISE SPECIFIED: 0 PLC ± - 1 PLC ± 0.3 2 PLC ± 0.2 3 PLC ± 0.15 4 PLC ± - ANGLES ± 3°	CHK S. HOU 10MAY2007	NAME	
		APVD W.J. KE 10MAY2007	HDMI CONNECTOR, TYPE A, RECEPTACLE, 1.55 CENTER HEIGHT, REVERSED, OFFSET, DIP.	
MATERIAL SEE NOTE	FINISH SEE NOTE	PRODUCT SPEC 108-57510		RESTRICTED TO
		APPLICATION SPEC		—
		WEIGHT 2.15 GRAMS	SIZE A3	CAGE CODE 00779
		DRAWING NO C-1770956		SCALE —
		CUSTOMER DRAWING		SHEET 1 OF 2
				REV C

THIS DRAWING IS UNPUBLISHED. RELEASED FOR PUBLICATION
 © COPYRIGHT BY TYCO ELECTRONICS CORPORATION. ALL RIGHTS RESERVED.

LOC	DIST	REVISIONS			
P	LTR	DESCRIPTION	DATE	DWN	APVD
		SEE SHEET 1.			

NOTES:

- MATERIAL:
 BOX: FIBREBOARD, CORRUGATED, DOUBLE WALL.
 CARRIER TAPE: POLYSTYRENES, HEAT-RESISTANT TEMPERATURE: 120°C, BLACK COLOR.
 COVER TAPE: PET, HEAT-RESISTANT TEMPERATURE: 100°C, TRANSPARENT COLOR.
 REEL: POLYSTYRENES, HEAT-RESISTANT TEMPERATURE: 70°C, BLUE COLOR.
 BAG: POLYETHYLENE, HEAT-RESISTANT TEMPERATURE: 100°C.
- PEELING STRENGTH: 0.1 ~ 1.3 N (10 ~ 130 GRAMS)
- PEELING SPEED: 300 mm/min.
- EACH BAG SHALL BE INCLUDED DESICCANT.



350	8	2800 PCS	11.3 KG	6 KG
PCS/REEL	REELS/CARTON	QUANTITY	GROSS WEIGHT	NET WEIGHT

THIS DRAWING IS A CONTROLLED DOCUMENT.		DWN	A. WU	10MAY2007	Tyco Electronics Corporation Taipei, Taiwan
DIMENSIONS: MM		CHK	S. HOU	10MAY2007	
TOLERANCES UNLESS OTHERWISE SPECIFIED:		APVD	W.J. KE	10MAY2007	
0 PLC ± - 1 PLC ± - 2 PLC ± - 3 PLC ± - 4 PLC ± - ANGLES ± - FINISH ± -		PRODUCT SPEC		NAME	
MATERIAL		APPLICATION SPEC		HDMI CONNECTOR, TYPE A, RECEPTACLE, 1.55 CENTER HEIGHT, REVERSED, OFFSET, DIP.	
		WEIGHT	-		SIZE
		CUSTOMER DRAWING		A3	CAGE CODE
				00779	DRAWING NO
				C=1770956	RESTRICTED TO
				SCALE	SHEET
				-	2 OF 2
				REV	C