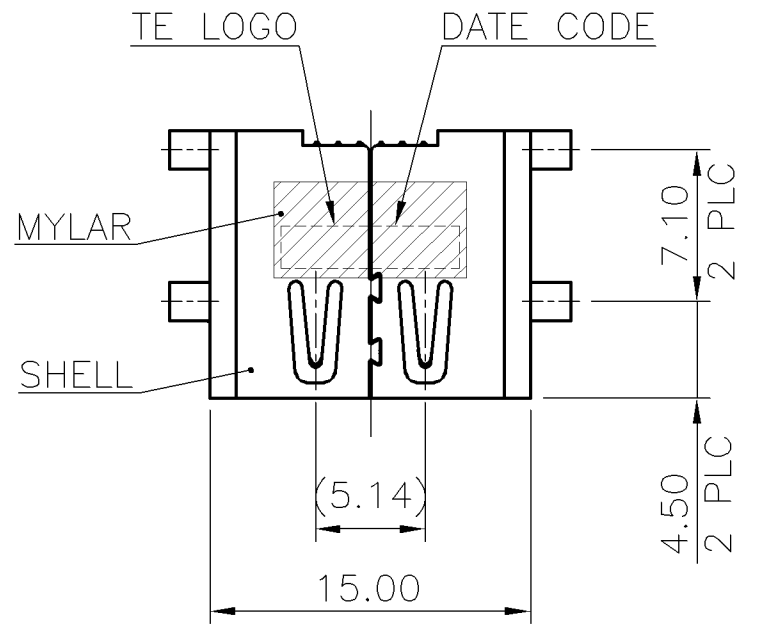
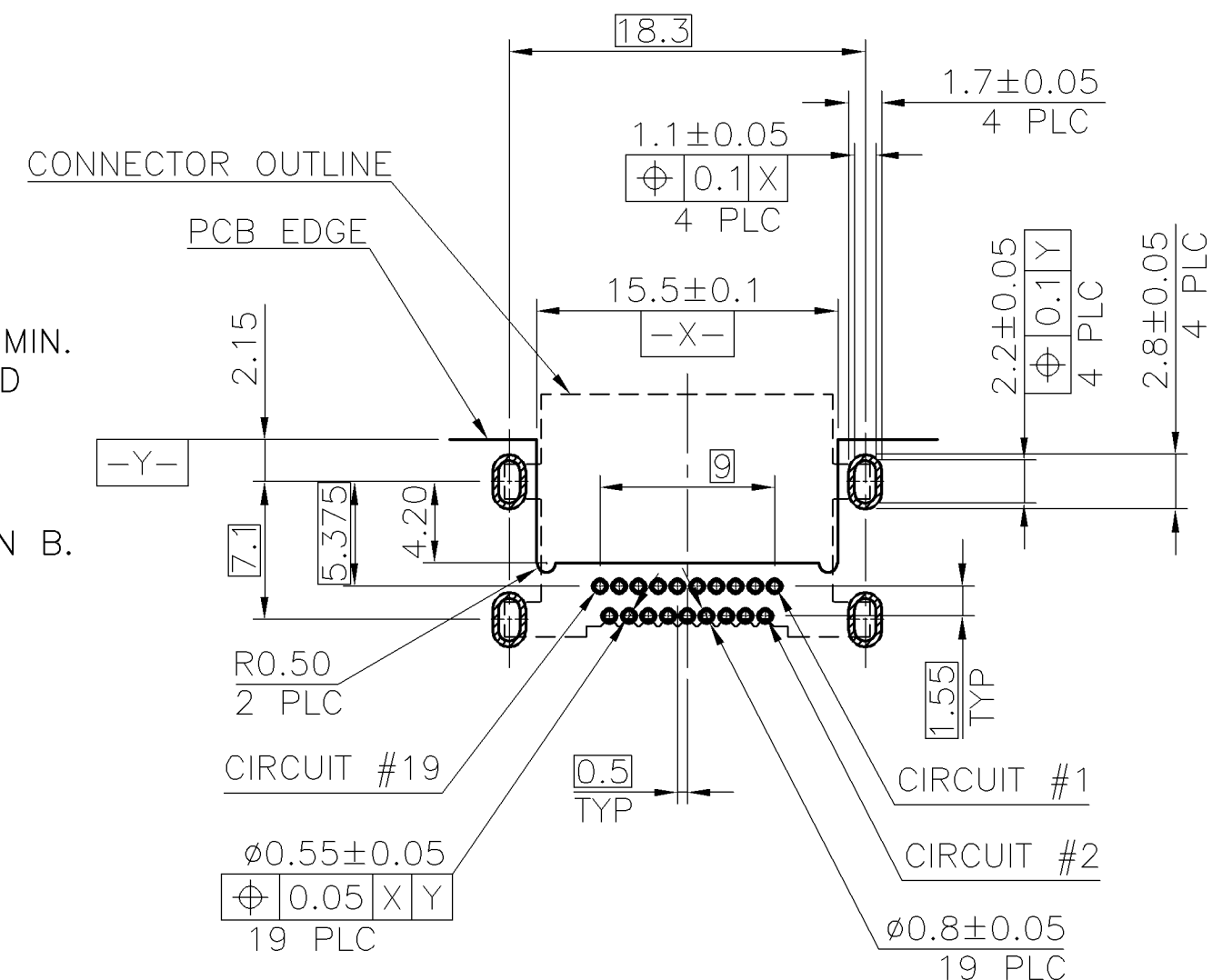
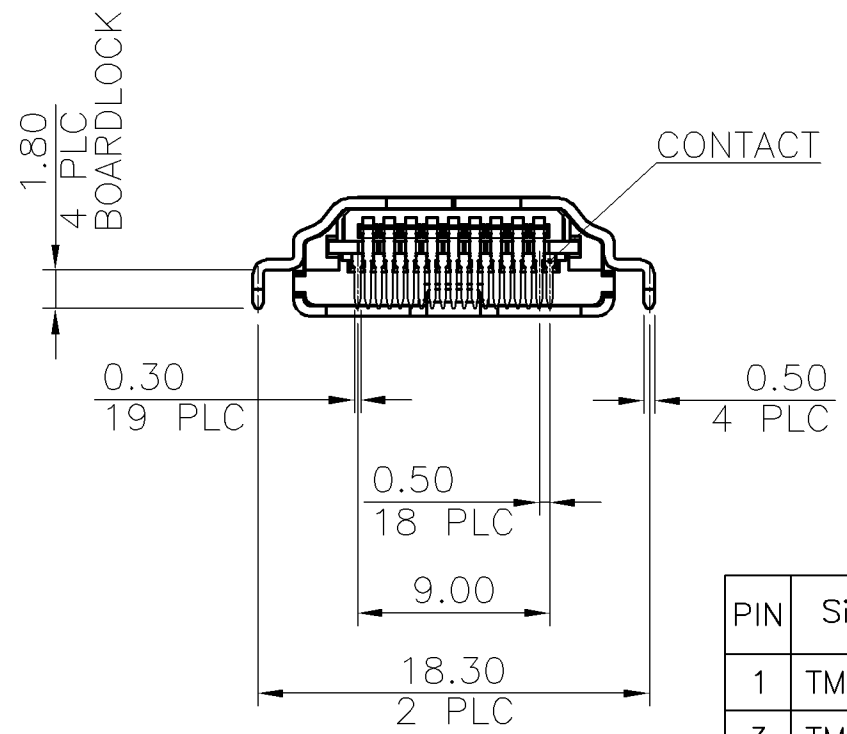
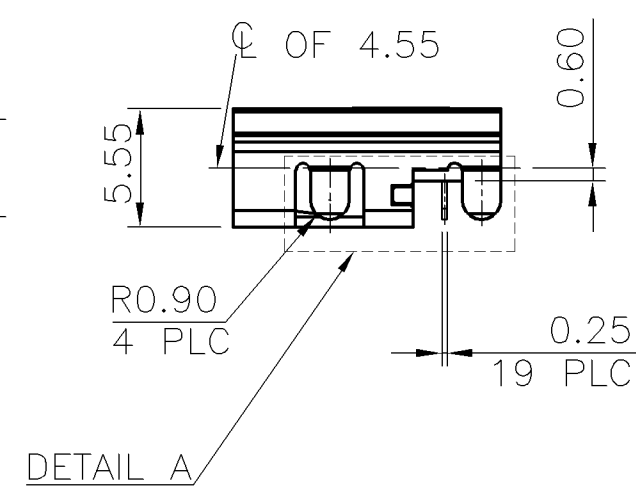
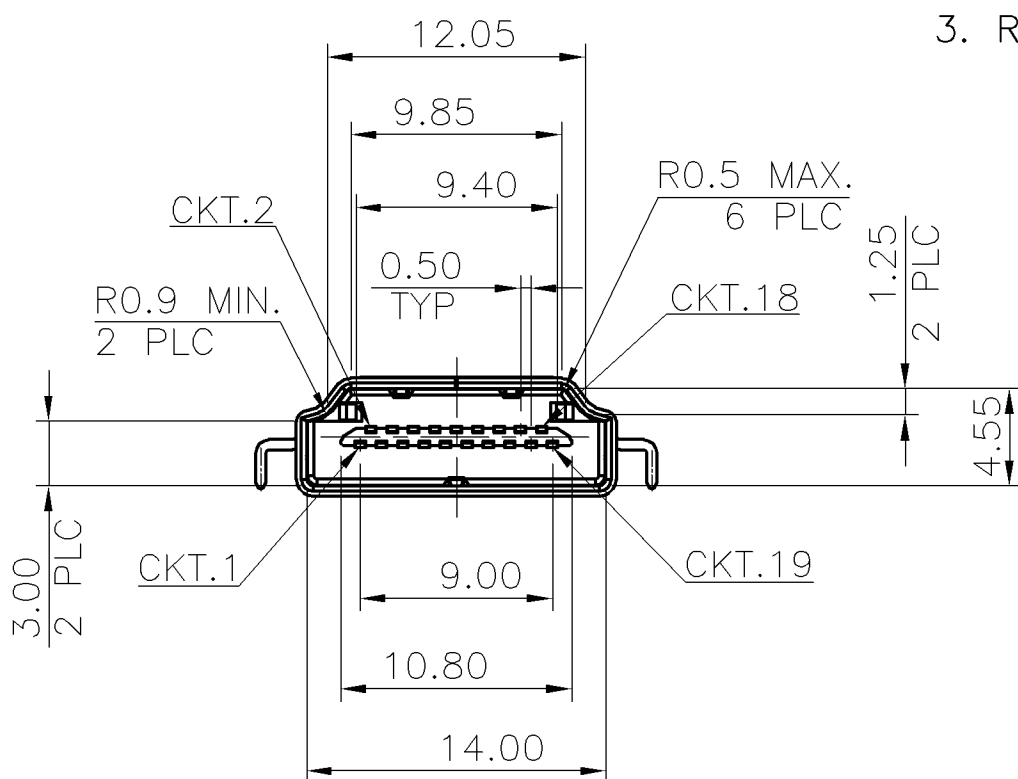


THIS DRAWING IS UNPUBLISHED. RELEASED FOR PUBLICATION
 © COPYRIGHT BY TYCO ELECTRONICS CORPORATION. ALL RIGHTS RESERVED.

LOC		DIST		REVISIONS					
DW				P	LTR	DESCRIPTION	DATE	DWN	APVD
					C	ECR-08-030777	04DEC08	AW	WK



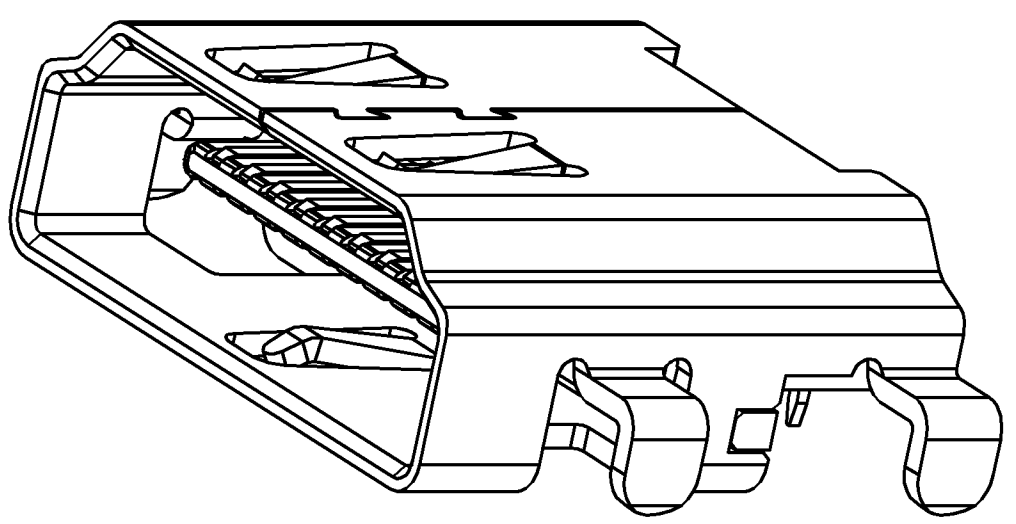
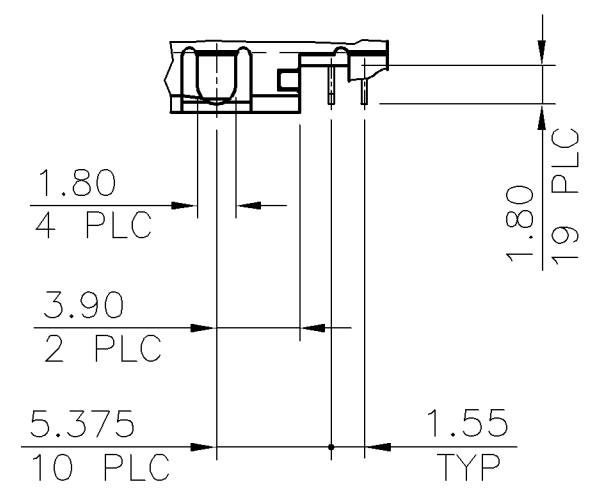
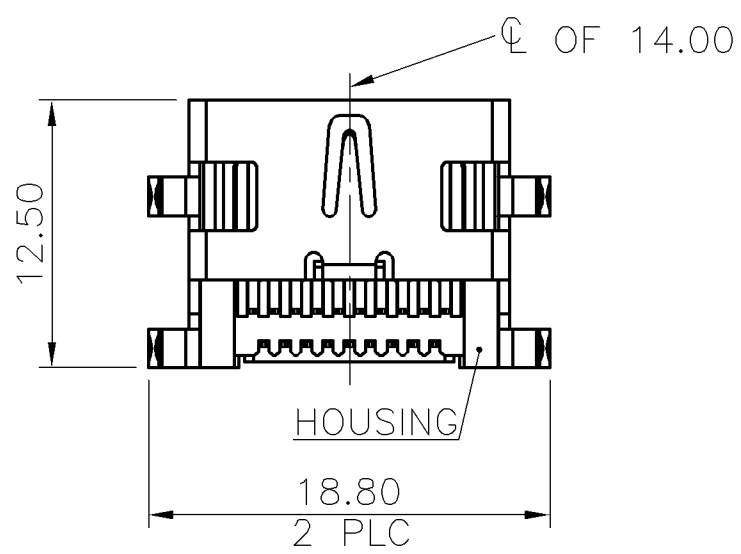
- NOTE:
- MATERIAL:
 HOUSING: HTN WITH 30% GF, UL 94V-0, BLACK COLOR.
 CONTACTS: BRASS.
 SHELL: BRASS.
 MYLAR: PI, YELLOW COLOR.
 - FINISH:
 CONTACTS: (SEE TABLE) GOLD PLATED ON CONTACT AREA, 2.54μm [100μ"] MIN.
 MATTE-TIN ON SOLDER TAIL, WITH ENTIRE CONTACT UNDERPLATED
 1.27μm [50μ"] MIN. NICKEL.
 SHELL: 1.27μm [50μ"] MIN. NICKEL PLATED.
 - REFLOW SOLDER CAPABLE TO 260°C PER TE TEST SPEC. 109-201, CONDITION B.



TOLERANCE: ±0.05, THICKNESS: 1.2mm
RECOMMENDED PCB LAYOUT (TOP VIEW)

PIN	Signal Assignment	PIN	Signal Assignment
1	TMDS Data2+	2	TMDS Data2 Shield
3	TMDS Data2-	4	TMDS Data1+
5	TMDS Data1 SHIELD	6	TMDS Data1-
7	TMDS Data0+	8	TMDS Data0 Shield
9	TMDS Data0-	10	TMDS Clock+
11	TMDS Clock Shield	12	TMDS Clock-
13	CEC	14	Reserved (N.C. on device)
15	SCL	16	SDA
17	DDC/CEC Ground	18	+5V Power
19	Hot Plug Detect		

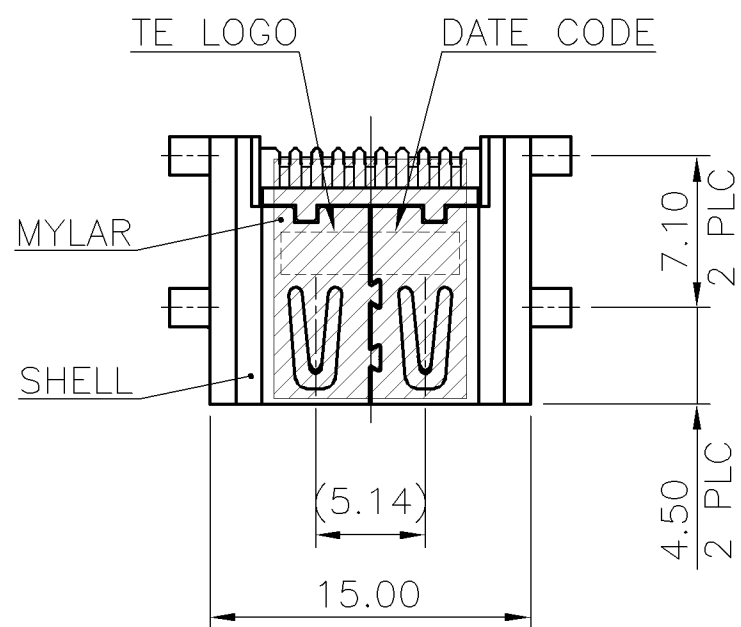
0.254μm [10μ"]	2041003-1
MIN. GOLD THICKNESS	PART NUMBER



THIS DRAWING IS A CONTROLLED DOCUMENT.		DWN A. WU 18AUG2008	Tyco Electronics Corporation Taipei, Taiwan	
DIMENSIONS: MM		CHK S. CHIEN 18AUG2008		
TOLERANCES UNLESS OTHERWISE SPECIFIED:		APVD W. KODAMA 18AUG2008	NAME	
0 PLC ± - 1 PLC ± 0.3 2 PLC ± 0.25 3 PLC ± 0.2 4 PLC ± - ANGLES ± 3°		PRODUCT SPEC 108-57510	HDMI CONNECTOR, TYPE A RECEPTACLE, 0.6 CL, OFFSET, REVERSED, DIP.	
MATERIAL SEE NOTE		FINISH SEE NOTE	APPLICATION SPEC -	RESTRICTED TO -
		WEIGHT 1.725 GRAMS	SIZE A3	CAGE CODE 00779
		CUSTOMER DRAWING	DRAWING NO C=2041003	REV C
		SCALE -	SHEET 1 OF 3	

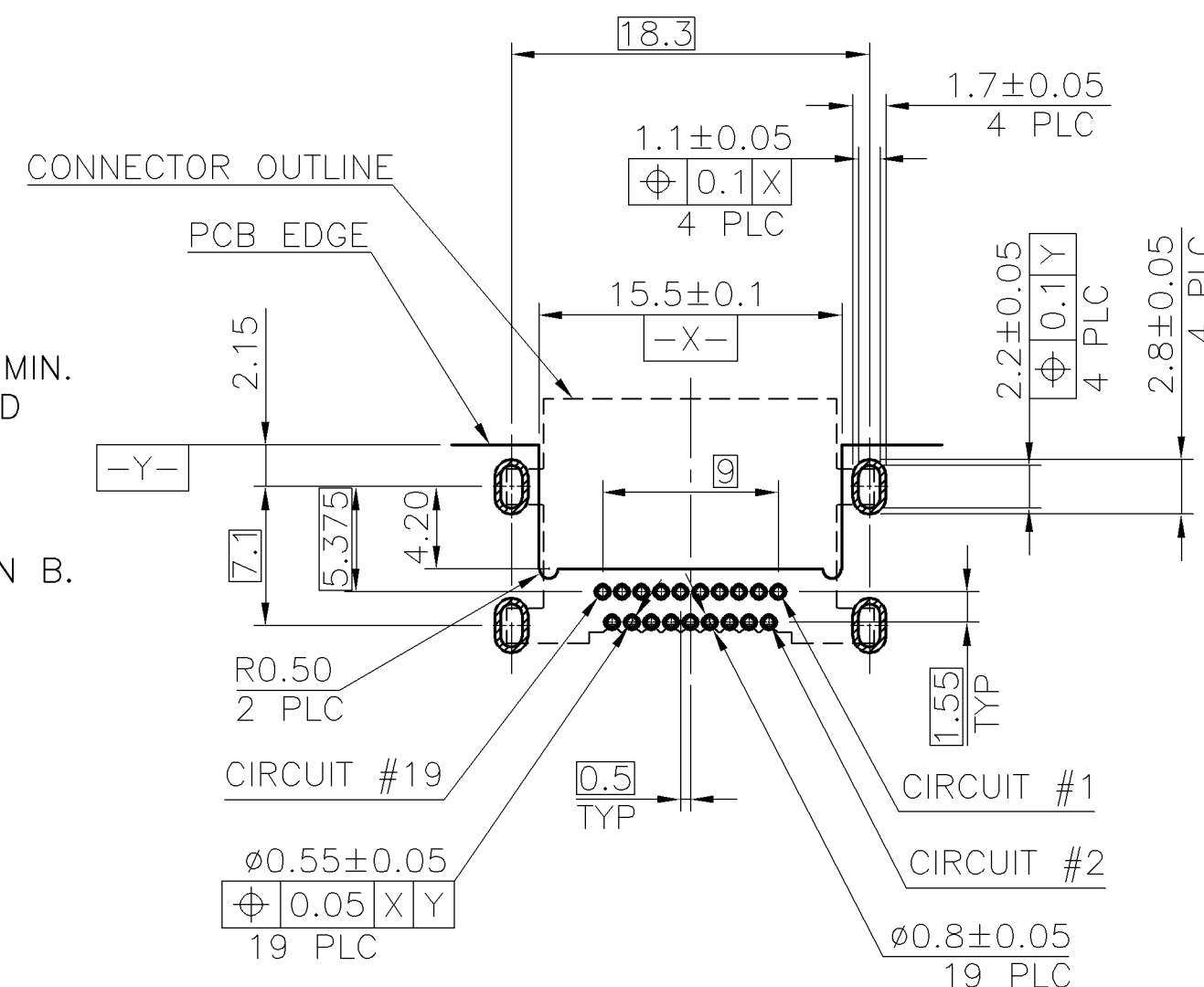
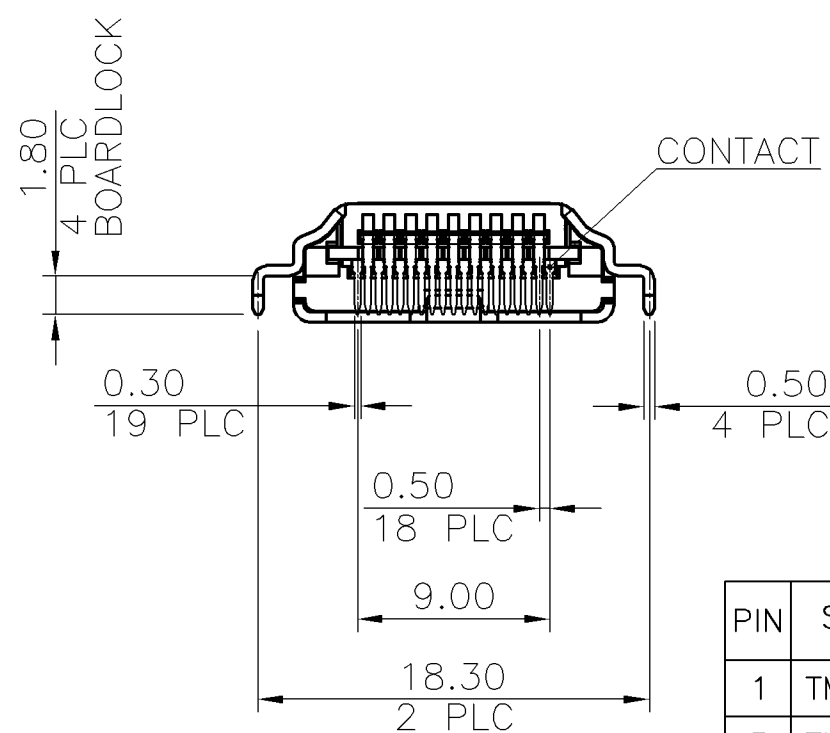
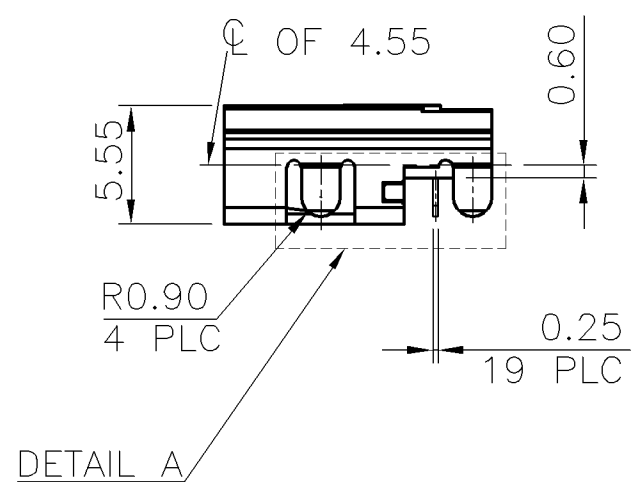
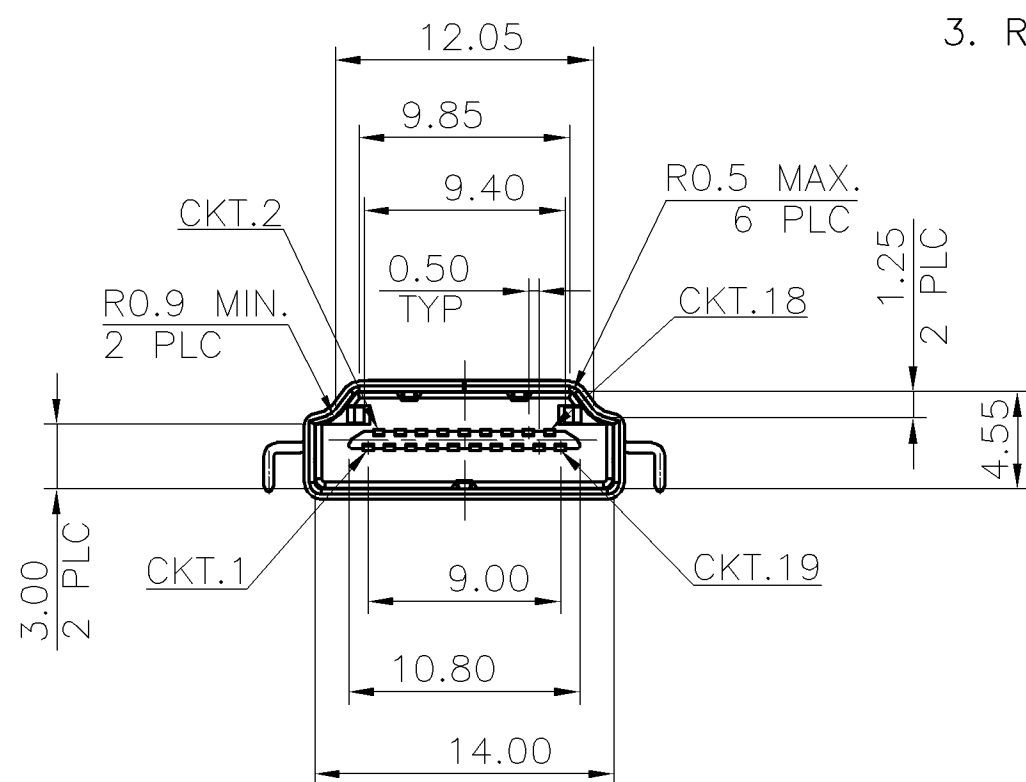
THIS DRAWING IS UNPUBLISHED. RELEASED FOR PUBLICATION
 © COPYRIGHT BY TYCO ELECTRONICS CORPORATION. ALL RIGHTS RESERVED.

LOC	DIST	REVISIONS			
P	LTR	DESCRIPTION	DATE	DWN	APVD
DW	—	SEE SHEET 1.			



NOTE:

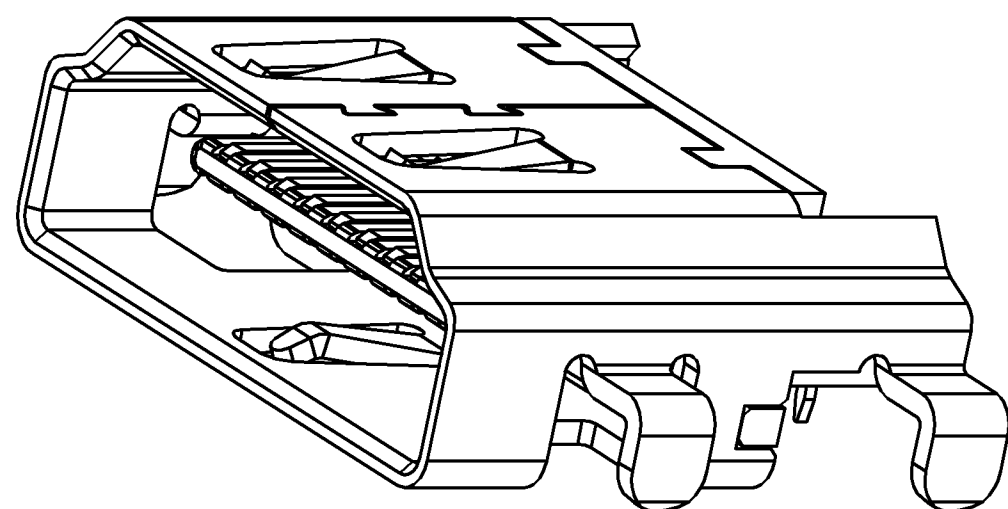
- MATERIAL:
 HOUSING: HTN WITH 30% GF, UL 94V-0, BLACK COLOR.
 CONTACTS: BRASS.
 SHELL: BRASS.
 MYLAR: PI, YELLOW COLOR.
- FINISH:
 CONTACTS: (SEE TABLE) GOLD PLATED ON CONTACT AREA, 2.54μm [100μ"] MIN.
 MATTE-TIN ON SOLDER TAIL, WITH ENTIRE CONTACT UNDERPLATED
 1.27μm [50μ"] MIN. NICKEL.
 SHELL: 1.27μm [50μ"] MIN. NICKEL PLATED.
- REFLOW SOLDER CAPABLE TO 260°C PER TE TEST SPEC. 109-201, CONDITION B.



TOLERANCE: ±0.05, THICKNESS: 1.2mm
RECOMMENDED PCB LAYOUT (TOP VIEW)

PIN	Signal Assignment	PIN	Signal Assignment
1	TMDS Data2+	2	TMDS Data2 Shield
3	TMDS Data2-	4	TMDS Data1+
5	TMDS Data1 SHIELD	6	TMDS Data1-
7	TMDS Data0+	8	TMDS Data0 Shield
9	TMDS Data0-	10	TMDS Clock+
11	TMDS Clock Shield	12	TMDS Clock-
13	CEC	14	Reserved (N.C. on device)
15	SCL	16	SDA
17	DDC/CEC Ground	18	+5V Power
19	Hot Plug Detect		

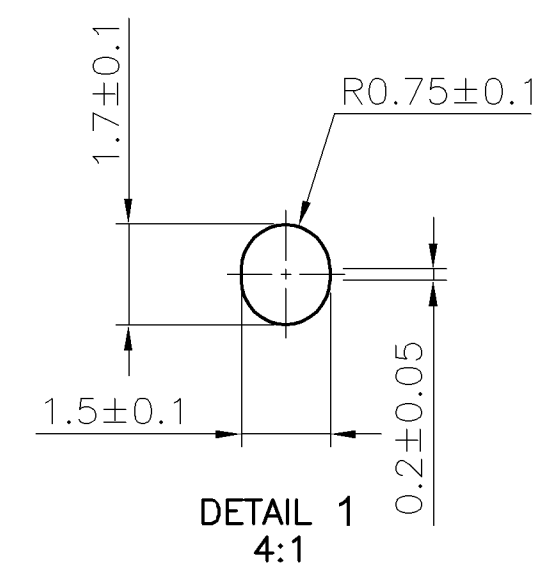
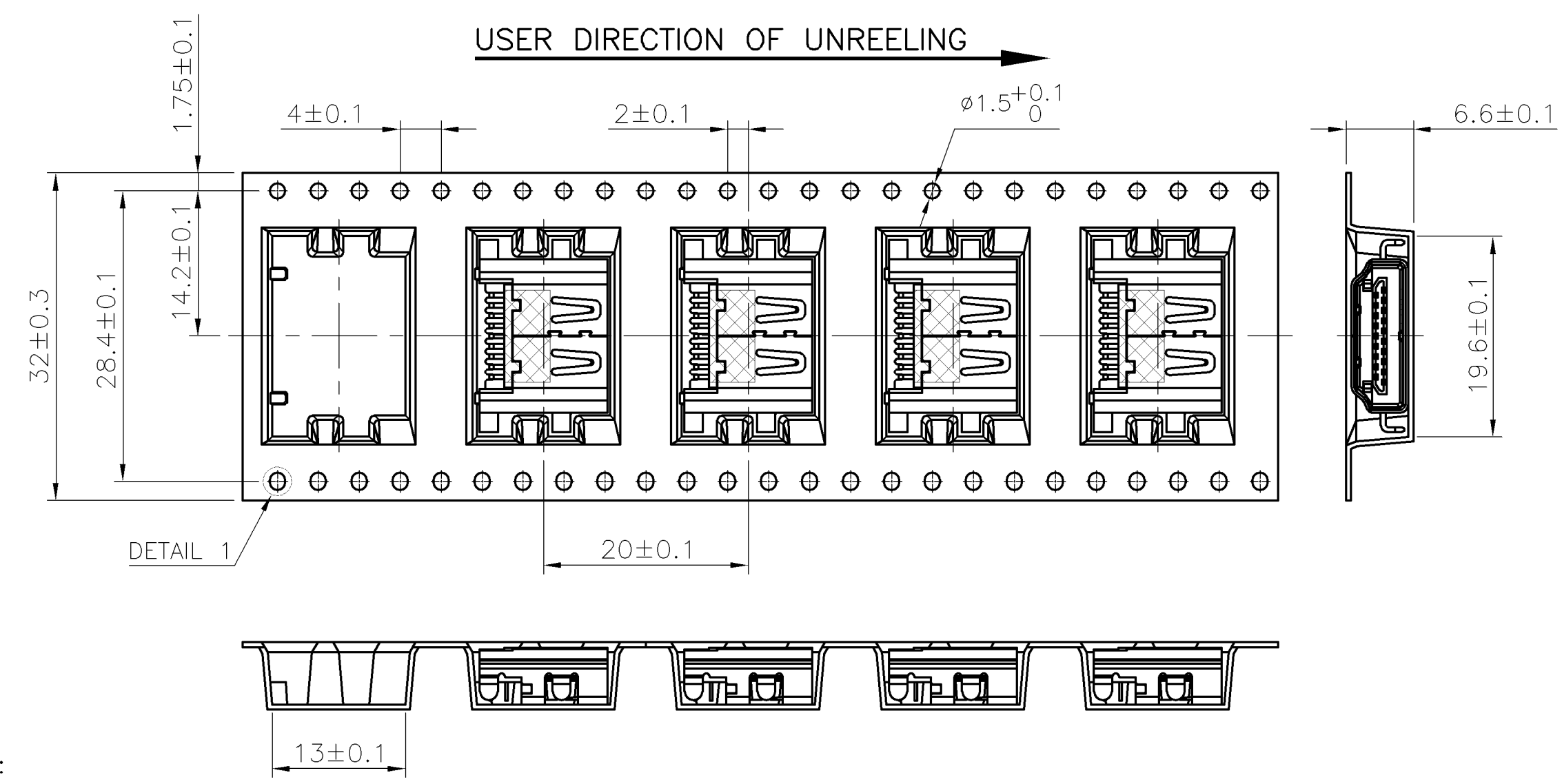
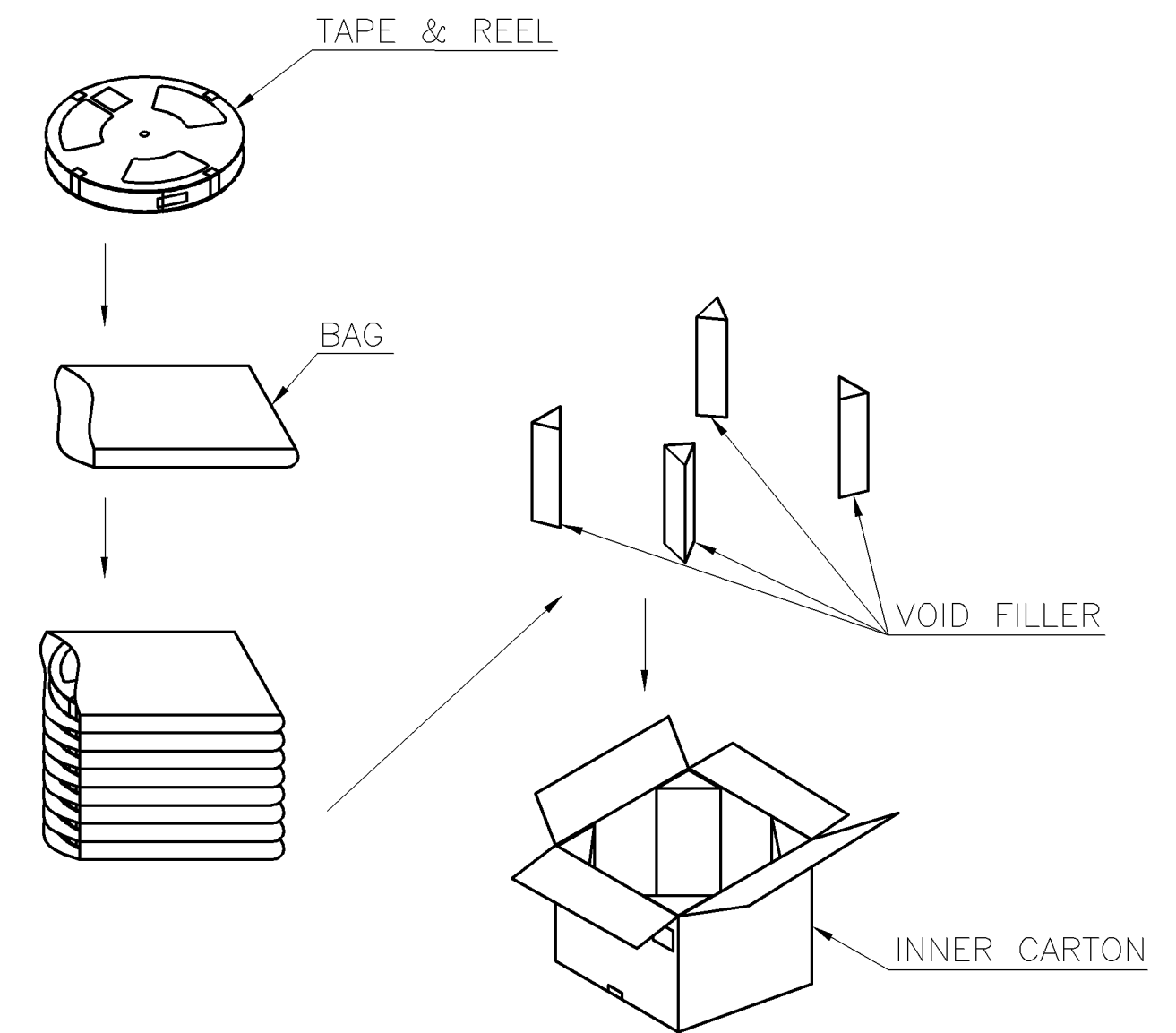
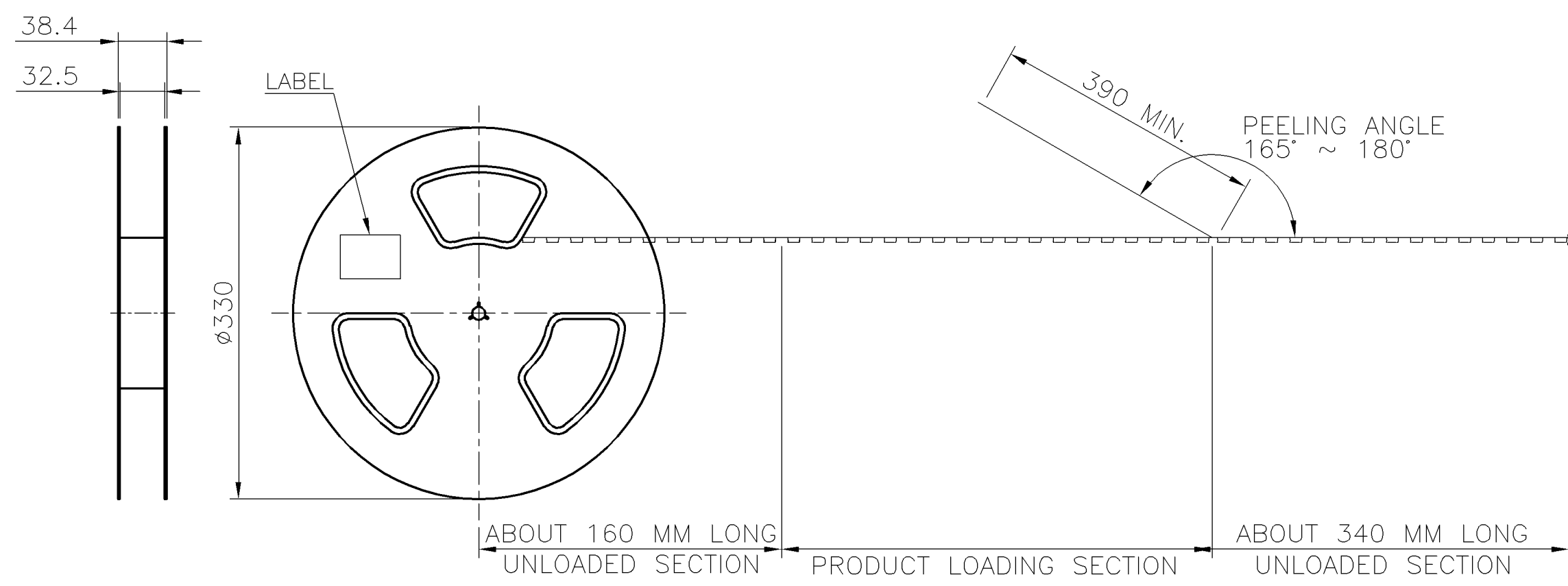
0.381μm [15μ"]	2041003-2
MIN. GOLD THICKNESS	PART NUMBER



THIS DRAWING IS A CONTROLLED DOCUMENT.		DWN A. WU 18AUG2008	Tyco Electronics Corporation Taipei, Taiwan	
DIMENSIONS: MM		CHK S. CHIEN 18AUG2008	NAME	
TOLERANCES UNLESS OTHERWISE SPECIFIED:		APVD W. KODAMA 18AUG2008	HDMI CONNECTOR, TYPE A RECEPTACLE, 0.6 CL, OFFSET, REVERSED, DIP.	
0 PLC ± -		PRODUCT SPEC 108-57510	SIZE	CAGE CODE
1 PLC ± 0.3		APPLICATION SPEC	DRAWING NO	RESTRICTED TO
2 PLC ± 0.25		—	—	—
3 PLC ± 0.2		WEIGHT 1.725 GRAMS	A300779	C=2041003
4 PLC ± -		CUSTOMER DRAWING	SCALE —	SHEET 2 OF 3
ANGLES ± 3°				REV C
FINISH SEE NOTE				

THIS DRAWING IS UNPUBLISHED. RELEASED FOR PUBLICATION
 © COPYRIGHT - BY TYCO ELECTRONICS CORPORATION. ALL RIGHTS RESERVED.

LOC	DIST	REVISIONS					
DW	-	P	LTR	DESCRIPTION	DATE	DWN	APVD
				SEE SHEET 1.			



- NOTE:
- MATERIAL:
 BOX: FIBREBOARD, CORRUGATED, DOUBLE WALL.
 TAPE: POLYSTYRENES, HEAT-RESISTANT TEMPERATURE: 120°C, BLACK COLOR.
 REEL: POLYSTYRENES, HEAT-RESISTANT TEMPERATURE: 70°C, BLUE COLOR.
 BAG: POLYETHYLENE, HEAT-RESISTANT TEMPERATURE: 100°C.
 - PEELING STRENGTH: 0.1 ~ 1.3 N (10 ~ 130 GRAMS)
 - PEELING SPEED: 300 mm/min.
 - EACH BAG SHALL BE INCLUDED DESICCANT.

500	8	4000 PCS	12.36 KG	7.12 KG
PCS/TAPE	REELS/BOX	QUANTITY	GROSS WEIGHT	NET WEIGHT

THIS DRAWING IS A CONTROLLED DOCUMENT.		DWN A. WU 18AUG2008	Tyco Electronics Corporation Taipei, Taiwan	
		CHK S. CHIEN 18AUG2008		
		APVD W. KODAMA 18AUG2008	NAME	
		PRODUCT SPEC	HDMI CONNECTOR, TYPE A RECEPTACLE, 0.6 CL, OFFSET, REVERSED, DIP.	
		APPLICATION SPEC	SIZE	CAGE CODE
		WEIGHT	A3 00779 C=2041003	
		CUSTOMER DRAWING	SCALE	SHEET
			-	3 OF 3
				REV C