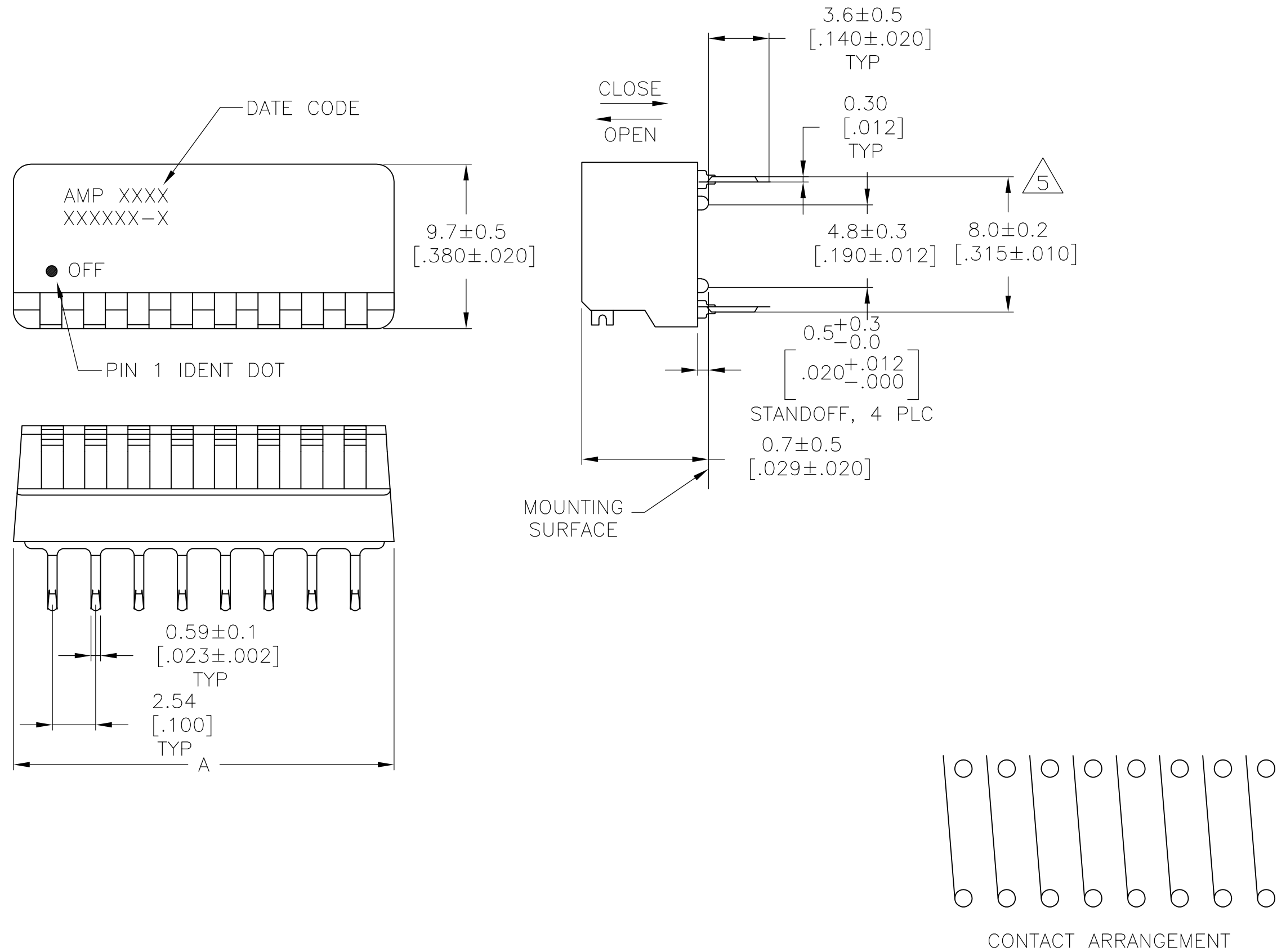
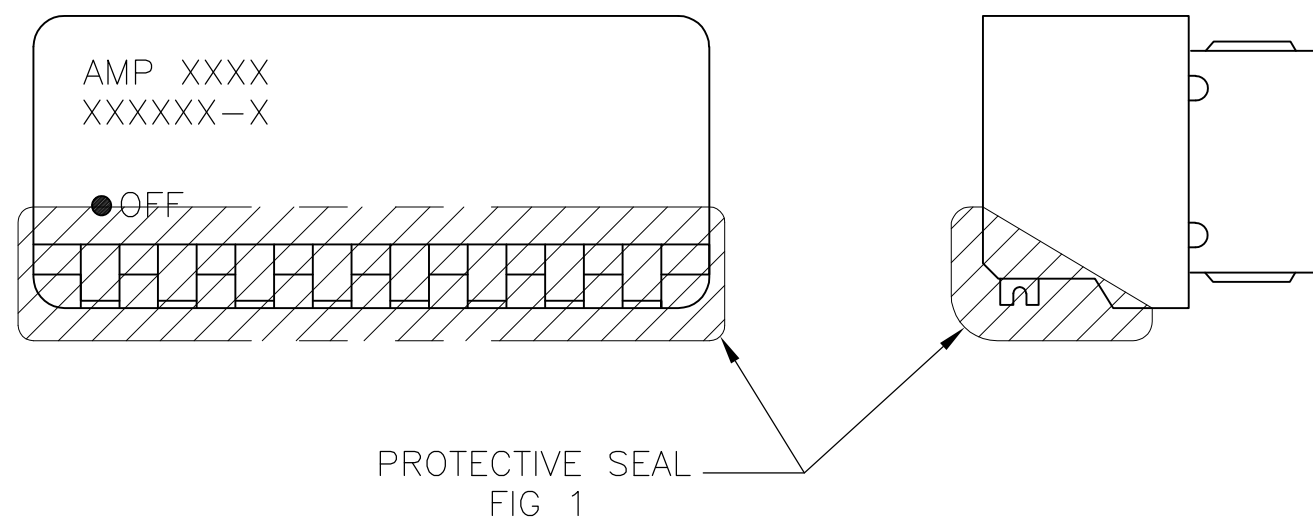


THIS DRAWING IS UNPUBLISHED. RELEASED FOR PUBLICATION
 © COPYRIGHT BY TYCO ELECTRONICS CORPORATION. ALL RIGHTS RESERVED.

LOC		DIST		REVISIONS			
P	LTR	DESCRIPTION	DATE	DWN	APVD		
D1	ECO 05	012273	30MAY06	BSV	MS		
D2	REVISED PER ECO-09-021510		05SEP09	KK	AEG		



- FOR ADDITIONAL SPECIFICATIONS SEE AMP PRODUCT SPEC 108-7519.
- SWITCH SHOWN IN OPEN POSITION.
- ALL CHARACTERS AND ROCKERS ARE WHITE, HOUSING IS BLACK.
- HOT MELT STRIPPABLE TRANSPARENT SEAL, SEE FIG 1.
- 8.00 [.315] DIMENSION APPLIES AT TERMINAL TIPS.
 TERMINALS ARE 7.62-0.00 [.300-.000] AT MOUNTING SURFACE
- SPECIAL PACKAGING IN 22 INCH TUBES.
- UV CURED STRIPPABLE SEAL, SEE FIG 1.
- ALL MATERIALS AND FINISHES SHALL COMPLY WITH EU DIRECTIVE 2002/95/EC OF 27 JAN 2003 (ROHS)
- OBSOLETE PARTS: OBSOLETE CIS STREAMLINING PER D.RENAUD/D.SINISI



8	N/A	22.3 [.88]	8	6-382758-8
8	N/A	14.7 [.58]	5	6-382758-5
8	4	12.2 [.48]	4	5-382758-4
9	SUPERCEDED	N/A	8	1-382758-8
9	SUPERCEDED	N/A	5	1-382758-5
	SUPERCEDED	4	8	382758-8
	4	12.2 [.48]	4	382758-4
	SEAL	DIM A	NO OF POSN	TYCO PART NO.

DIMENSIONS:		TOLERANCES UNLESS OTHERWISE SPECIFIED:		DWN		Tyco Electronics		Tyco Electronics Corporation		
mm	[INCHES]	0 PLC	± -	R.TALLEY	03MAR93	NAME	Harrisburg, Pa 17105-3608			
		1 PLC	± - <td>CHK C.WHITT</td> <td>04MAR93</td> <td>APPLICATION SPEC</td> <td colspan="3">SWITCH ASSY, DIP, TYPE C, 7000 SERIES, SPST, SIDE ACTUATED</td>	CHK C.WHITT	04MAR93	APPLICATION SPEC	SWITCH ASSY, DIP, TYPE C, 7000 SERIES, SPST, SIDE ACTUATED			
		2 PLC	± - <td>APVD J.SIDDEN</td> <td>04MAR93</td> <td>PRODUCT SPEC</td> <td>SIZE</td> <td>CAGE CODE</td> <td>DRAWING NO</td> <td>RESTRICTED TO</td>	APVD J.SIDDEN	04MAR93	PRODUCT SPEC	SIZE	CAGE CODE	DRAWING NO	RESTRICTED TO
		3 PLC	± 0.13 [.005]				A2	00779	C=382758	-
		4 PLC	± -				SCALE	SHEET	OF	REV
		ANGLES	± -				4:1	1	1	D2
MATERIAL		FINISH		WEIGHT		CUSTOMER DRAWING				
HOUSING & ROCKERS; POLYESTER CONTACTS; BERYLLIUM COPPER		CONTACTS: PLATED 0.00076 [.00030] MIN GOLD IN CONTACT AREA OVER 0.00127 [.000050] MIN. NICKEL.		-						

382758

A