

4

3

2

1

THIS DRAWING IS UNPUBLISHED.

RELEASED FOR PUBLICATION

©

COPYRIGHT

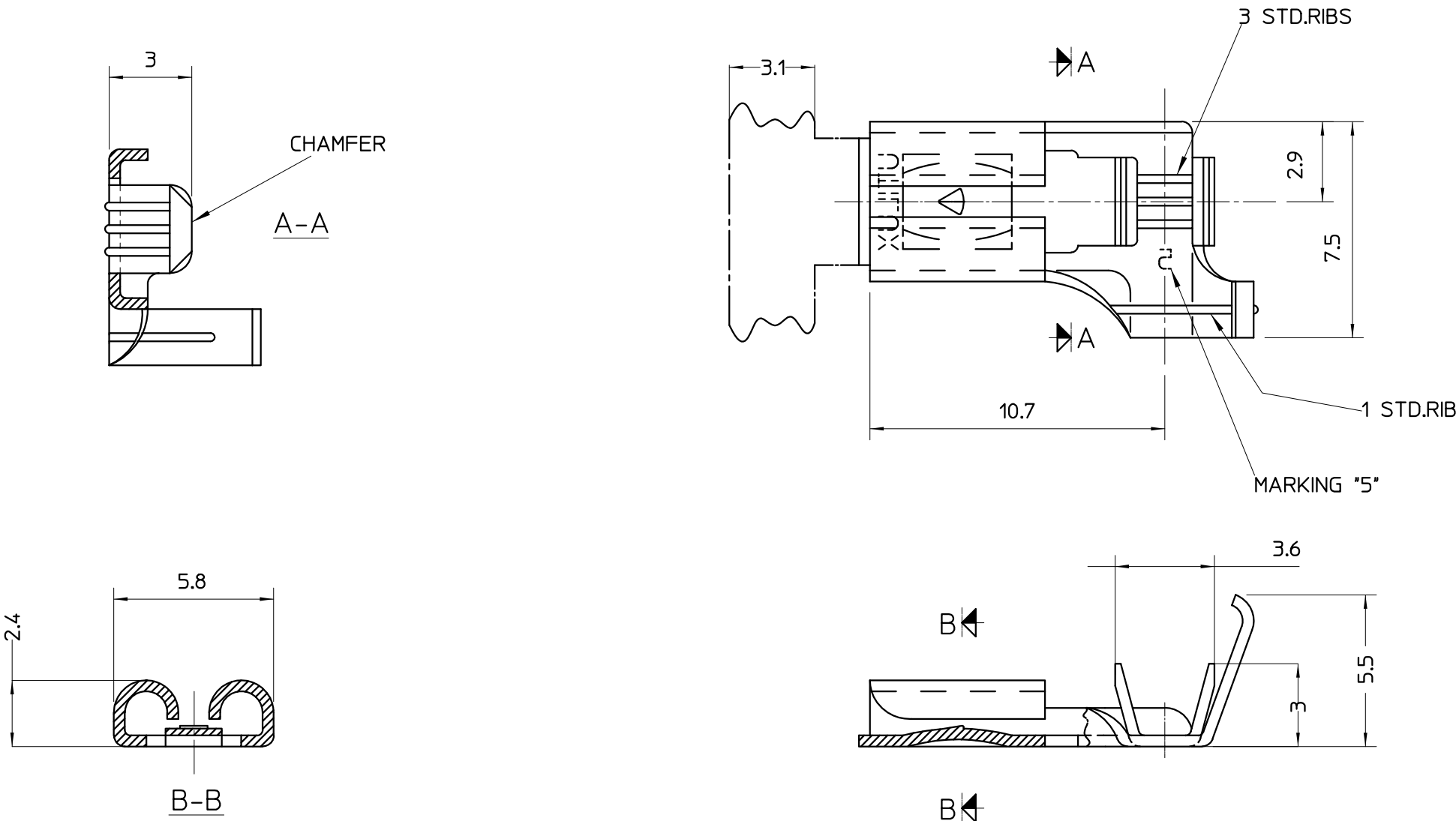
-

BY TYCO ELECTRONICS CORPORATION.

ALL RIGHTS RESERVED.

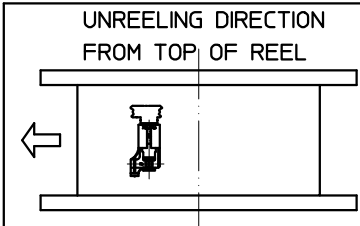
LOC	DIST	REVISIONS				
		P	LTR	DESCRIPTION	DATE	APVD
U	-		A	ECN FA00 0002 05 - VERSION -0 ADDED	3.2.05	WR

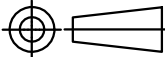
- NOTES:
- WIRE SIZE RANGE:
CONDUCTOR: 0.4mm2 - 1.0mm2
INSULATION DIA: 2.3mm - 2.8mm
 - THIS PRODUCT IS UL APPROVED



BRASS PRE-TIN	RECEPTACLE H1145ET	1-1627016-3
NICKEL SILVER	RECEPTACLE H1145B	1-1627016-2
BRASS	RECEPTACLE H1145	1-1627016-0
MATERIAL DESC.	DESCRIPTION	PART No.

THIS INFORMATION IS CONFIDENTIAL AND PROPRIETARY TO TYCO ELECTRONICS CORPORATION AND ITS WORLDWIDE SUBSIDIARIES AND AFFILIATES. IT MAY NOT BE DISCLOSED TO ANYONE OTHER THAN TYCO ELECTRONICS PERSONNEL WITHOUT WRITTEN AUTHORIZATION FROM TYCO ELECTRONICS CORPORATION, HARRISBURG, PENNSYLVANIA, USA.



THIS DRAWING IS A CONTROLLED DOCUMENT.		DWN: W. Riede 23.6.03		<div>tyco</div> <div>Tyco Electronics Corporation</div> <div>Electronics</div> <div>AUSTRALIA</div>																
		CHK: H. Thai 23.6.03																		
ALL DIMENSIONS IN mm:	TOLERANCES UNLESS OTHERWISE SPECIFIED:		APVD: P. Timbrel 23.6.03		NAME: RECEPTACLE QC 4.8x0.5															
	DIMENSION (mm) TOLERANCE(±mm)		PRODUCT SPEC:																	
	LESS THAN 10		0.4		SIZE A3															
	OVER 10 TO 30		0.5						CAGE CODE											
	OVER 30 TO 80		0.7										DRAWING NO C=1627016							
	OVER 80 TO 250		1.0														RESTRICTED TO			
	ANGLES		±2°																	
APPLICATION SPEC:		-		CUSTOMER DRAWING																
WEIGHT:		-						SCALE 5:1												
MATERIAL		FINISH										SHEET 1 OF 1								
REF. BLOCK		REF. BLOCK														REV A				