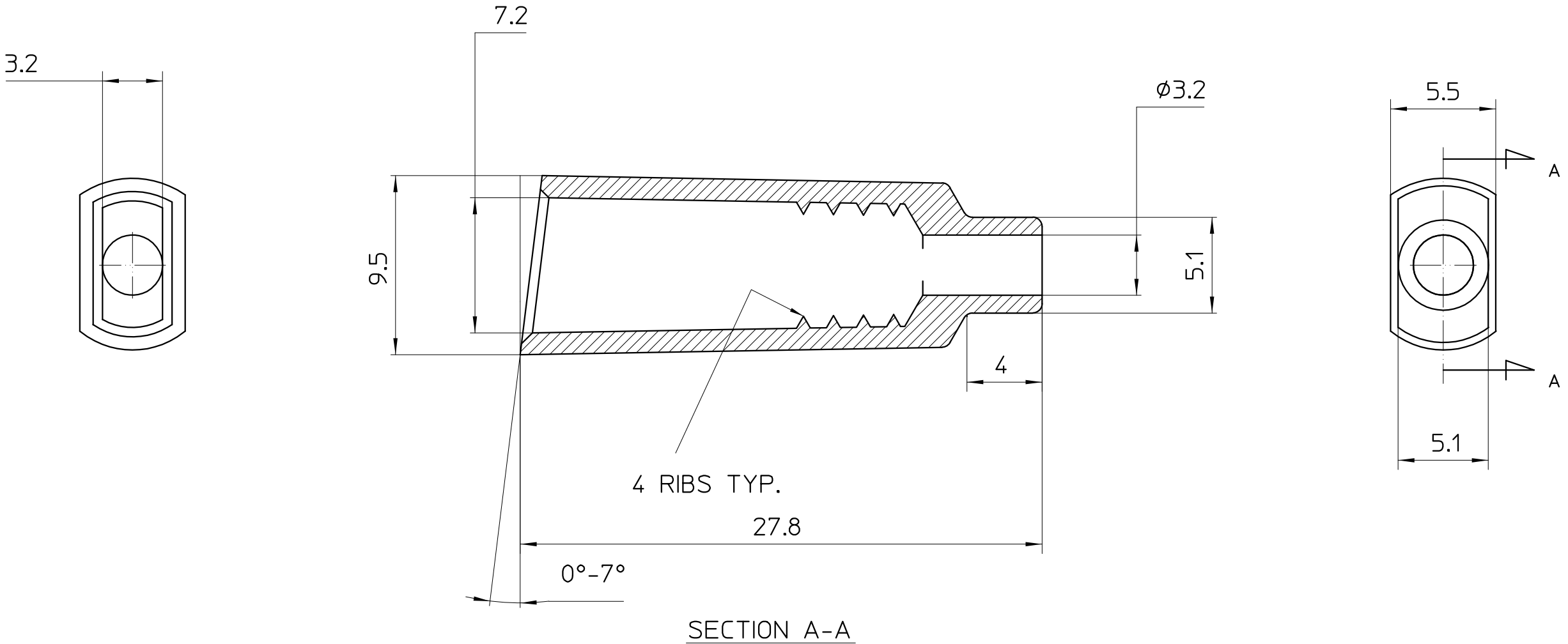

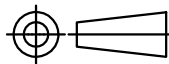


LOC	DIST	REVISIONS					
		P	LTR	DESCRIPTION	DATE	DWN	APVD
U	-		0	REDRAWN - WAS UTILUX DRAWING 01.01135.01	24 OCT 08	N.P.	W.R.
			01	ECR-09-007815 - P/N 1--5 ADDED	6 APR 09	WR	WR



- NOTES:
- PRE-FIT TYPE INSULATOR TO SUIT QC 6.3 STRAIGHT RECEPTACLE.

01	5000	PVC, FLEXIBLE CLEAR	INSULATOR (H1135/5000)		1-1627011-5												
	150		INSULATOR (H1135/150)		1-1627011-0												
	PACK SIZE		MATERIAL DESC.		DESCRIPTION (UTXP/N:)		PART No.										
THIS DRAWING IS A CONTROLLED DOCUMENT.			DWN: N.PATEL 24 OCT 08		 Kingsgrove AUSTRALIA		NAME: INSULATOR, PRE-FIT										
ALL DIMENSIONS IN mm:			CHK: W.RIEDE 24 OCT 08														
		TOLERANCES UNLESS OTHERWISE SPECIFIED:		APVD: W.RIEDE 24 OCT 08													
		DIMENSION (mm) TOLERANCE(±mm)		PRODUCT SPEC:													
		LESS THAN 10 0.4		-													
		OVER 10 TO 30 0.5		APPLICATION SPEC:													
OVER 30 TO 80 0.7		-		SIZE		CAGE CODE		DRAWING NO		RESTRICTED TO							
OVER 80 TO 250 1.0		ANGLES ±2°		WEIGHT: -		A3		©=1627011		-							
MATERIAL REF BLOCK		FINISH -		CUSTOMER DRAWING								SCALE 4:1		SHEET 1 OF 1		REV 01	

THIS INFORMATION IS CONFIDENTIAL AND PROPRIETARY TO TYCO ELECTRONICS AND ITS WORLDWIDE SUBSIDIARIES AND AFFILIATES. IT MAY NOT BE DISCLOSED TO ANYONE OTHER THAN TYCO ELECTRONICS PERSONNEL WITHOUT AUTHORIZATION.