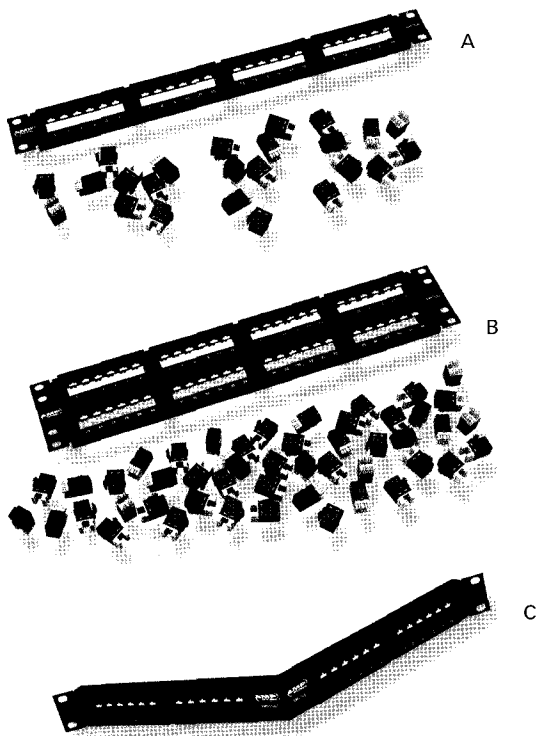
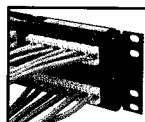


### Twisted Pair Patch Panels



### Product Facts

- :: Incorporate integrated solid contacts with the panel for enhanced protection, appearance and reliability
- :: I/O connection made via 110 IDC punch down in the rear of patch panel, minimizing pre-planning and allowing for cables to be cut to length or with 110 plug and play cable assembly
- :: Cost-effective solution for AMPTRAC Connectivity Management System ready solution - install AMPTRAC patch panels now and analyzer and software later
- :: Available in standard flush versions as well as angled versions for improved cable and space management
- :: Uses AMP NETCONNECT high-performance SL Series Cat 6 and 5E110Connect Modular Jacks
- :: Category 5e and 6 Patch Panels come with Modular Jacks bagged separately (unloaded) for field termination with SL Series Modular Jack Termination Tool (see page 151 of the AMP NETCONNECT Catalog 82164)
- :: SL Series Multimedia Patch Panels come unloaded and accept SL Series Jacks for custom configurations



Terminated  
w/Single Ended - IDC  
I/O Cable Assembly



Terminated  
w/110 Plug & Play  
I/O Cable Assembly

Description	Type		Height Rack Units (inches)	Figure	Part Number
Category 6	Standard (Flush)	24-Port	1U (1.75")	A	1435326-1
		48-Port	2U (3.50")	B	1435327-1
	Angled	24-Port	1U (1.75")	C	1499616-1
		48-Port	2U (3.50")	-	1499617-1
Category 5e	Standard (Flush)	24-Port	1U (1.75")	-	1435367-1
		48-Port	2U (3.50")	-	1435368-1
	Angled	24-Port	1U (1.75")	-	1499618-1
		48-Port	2U (3.50")	-	1499619-1
SL Series Multimedia (without jacks)	Standard (Flush)	24-Port	1U (1.75")	-	1777011-1
		48-Port	2U (3.50")	-	1777012-1
	Angled	24-Port	1U (1.75")	-	1499620-1
		48-Port	2U (3.50")	-	1499621-1

### Cable Management

Description	Part Number
Rear Cable Management Frame	1711314-1
Rear Cable Management Bar 5" deep	557548-1

Note: 1711314-1 typically used when rack or cabinet does not have mounting holes in rear of rack/frame needed for 557548-1.