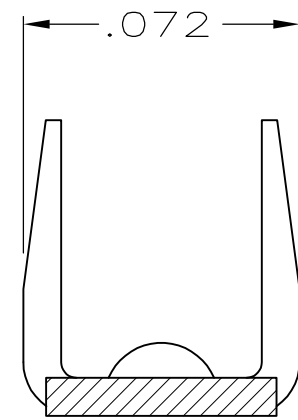
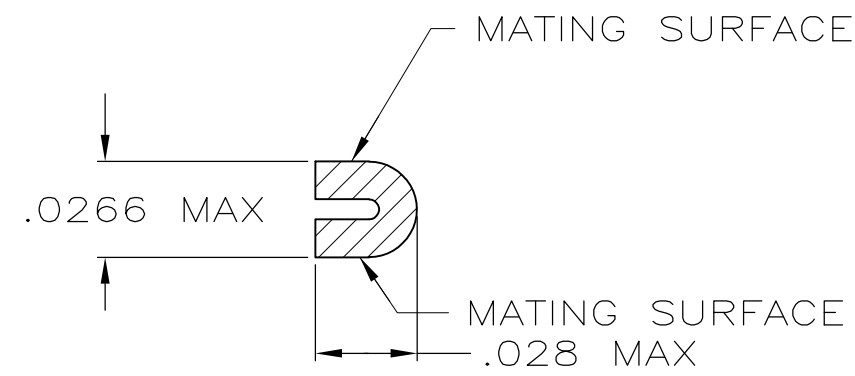
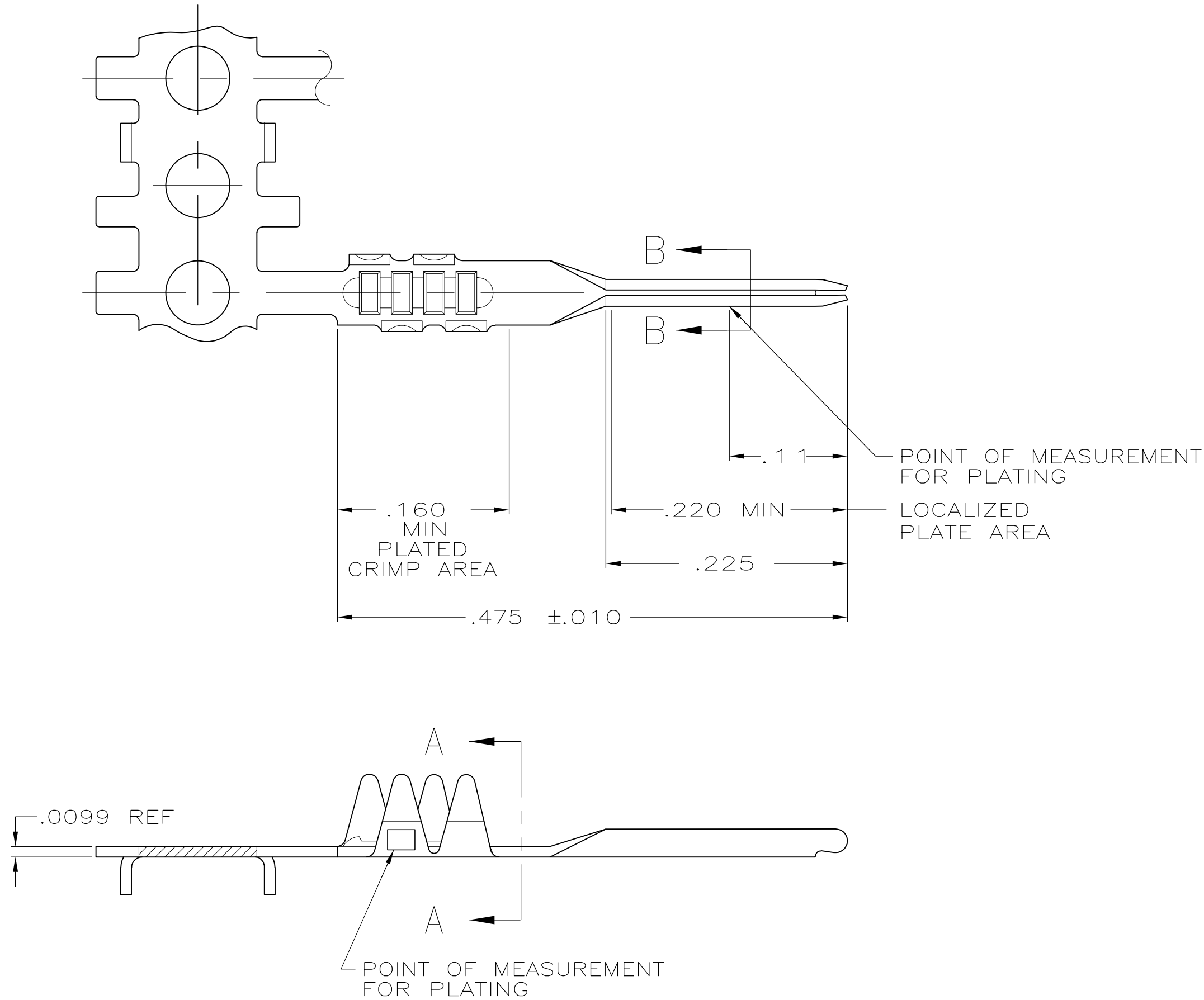


THIS DRAWING IS UNPUBLISHED.

RELEASED FOR PUBLICATION

© COPYRIGHT - BY TYCO ELECTRONICS CORPORATION. ALL RIGHTS RESERVED.

LOC	DIST	REVISIONS					
		P	LTR	DESCRIPTION	DATE	DWN	APVD
GP	00		N	REVISED PER ECO-09-001588	19JUN2009	CJV	CWR



- 1 NICKEL UNDERPLATE .000050 MIN THK ON ENTIRE CONTACT WITH GOLD .000015 THK ON LOCALIZED PLATE AREA AND BRIGHT TIN-LEAD .000100 MIN THK IN CRIMP AREA
- 2 BRIGHT TIN-LEAD .000100 MIN THK OVER NICKEL UNDERPLATE .000050 MIN THK ON ENTIRE CONTACT
- 3 GOLD FLASH IN PLATED CRIMP AREA, .00015 MIN GOLD ON LOCALIZED PLATE AREA, BOTH OVER .000050 MIN NICKEL ON ENTIRE CONTACT, -OR- GOLD FLASH OVER PALLADIUM-NICKEL, .000015 MIN TOTAL THK ON LOCALIZED PLATE AREA AND GOLD FLASH ON PLATED CRIMP AREA, BOTH OVER .000050 MIN NICKEL ON ENTIRE CONTACT.
- 4 GOLD FLASH IN PLATED CRIMP AREA, .00100 MIN TIN IN LOCALIZED PLATE AREA, BOTH OVER .000050 MIN NICKEL ON ENTIRE CONTACT.

3	88976-5
4	88976-4
1	88976-3
2	88976-2
FINISH	PART NO

SUPERSEDED BY 88976-5

THIS DRAWING IS A CONTROLLED DOCUMENT.		DWN P.BERRY 3-21-86	Tyco Electronics Tyco Electronics Corporation Harrisburg, PA 17105-3608			
DIMENSIONS: INCHES		CHK D.WORTHINGTON 3-24-86				
		APVD R. SMITH 3-25-86	NAME CONTACT, FFC .100CL, .025 SQ PIN -			
		PRODUCT SPEC 108-9024				
		APPLICATION SPEC 114-16015	SIZE A2	CAGE CODE 00779	DRAWING NO C=88976	RESTRICTED TO -
MATERIAL PHOS BRONZE		FINISH SEE TABLE	WEIGHT -	SCALE NTS		SHEET 1 OF 1
		CUSTOMER DRAWING		REV N		