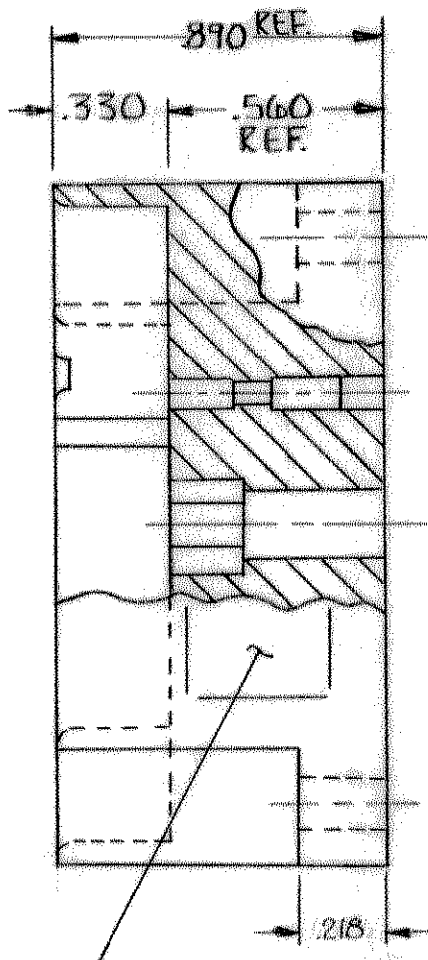
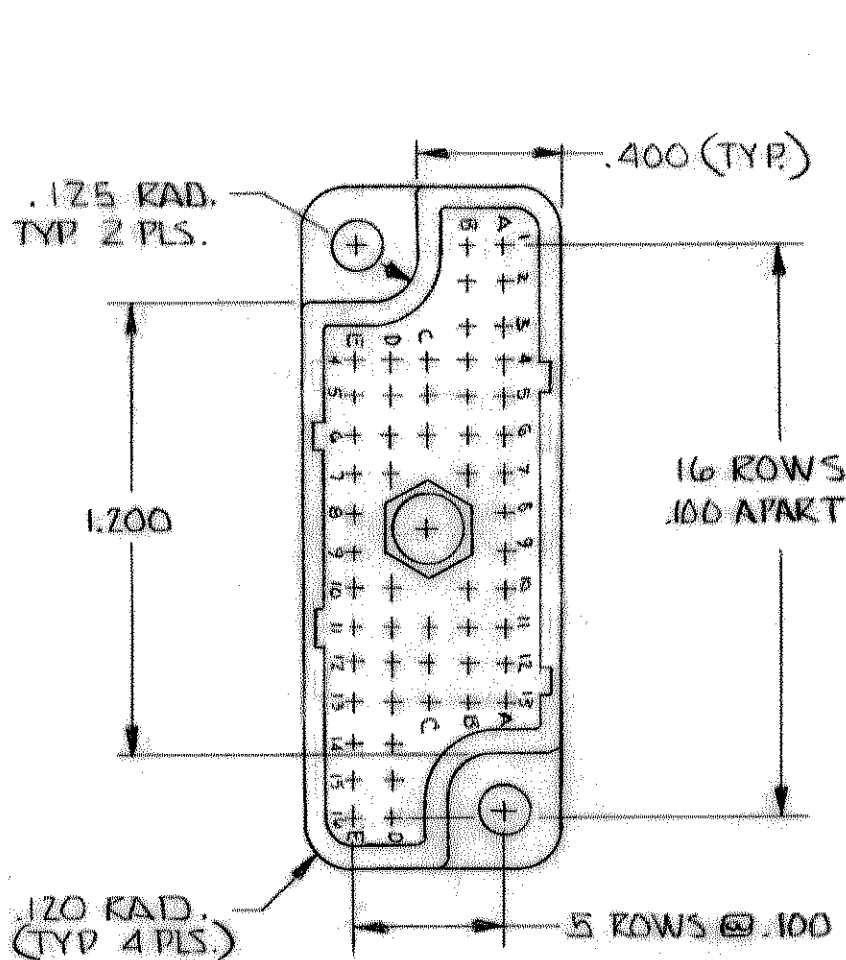


© 1970 BY AMP INCORPORATED. ALL RIGHTS RESERVED. AMP PRODUCTS COVERED BY PATENTS AND/OR PATENTS PENDING.

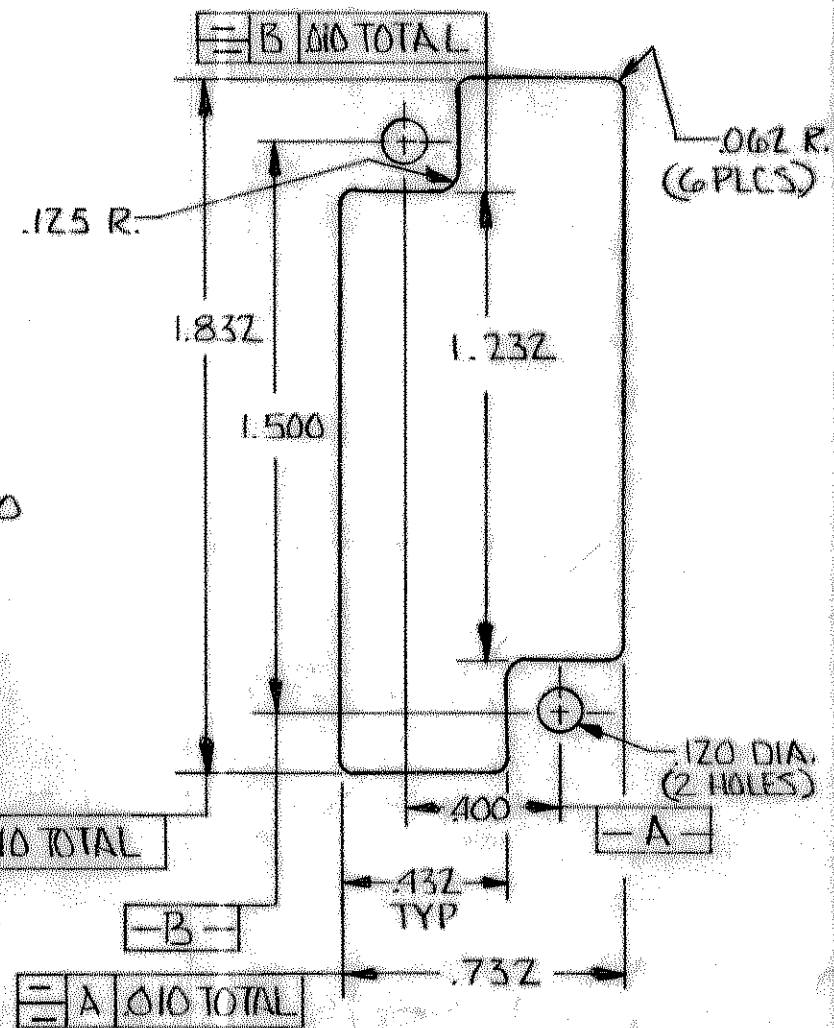
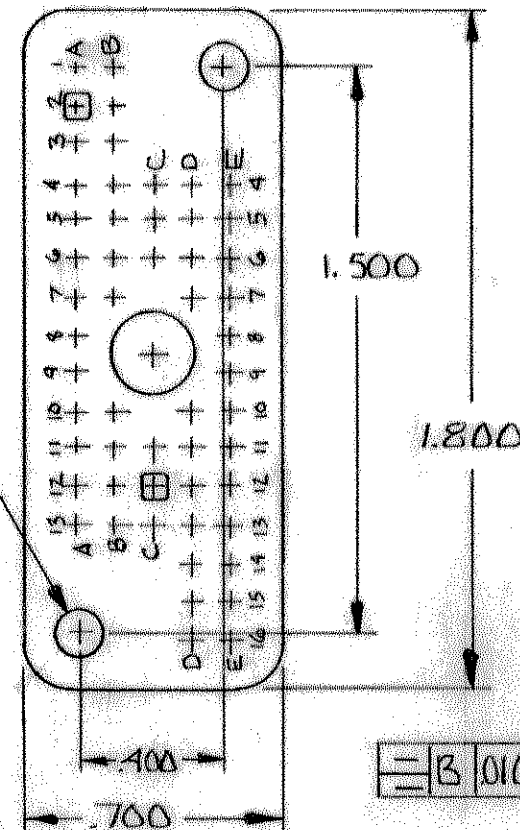
REVISIONS				
ZONE	LTR	DESCRIPTION	DATE	APPROVED
	C	REDRAWN PER ECN A-718	8-5-70	BAW/JS
	D	REV. PER ECN B-482	1-9-72	JM/JS
	E	REV. PER ECN J-340	3-17-82	SB/JS
	F	REV PER 0630-276-01	8-02	CT

- 1. CONTACT CAVITY WILL ACCEPT BOTH TYPE XI PIN & SOCKET.
- 2. JACKSCREW ASSEMBLY (NOT SHOWN) WILL FIT IN EITHER PLUG OR RECEPTACLE AND CAN BE INSTALLED BY CUSTOMER.



.120 DIA. 2 HOLES

MARK "AMP" PART NO. & DATE CODE. (EITHER SIDE)



- 203803-1 1. AS SHOWN.
- 2. MATERIAL-BLACK PHENOLIC, PER MIL-M-14, TYPE MFH.
- 203803-2 1. SAME AS -1 EXCEPT:
- 2. MATERIAL-BLUE DIALLYL PHTHALATE PER MIL-M-14, TYPE SD6-F.

SUGGESTED PANEL CUT-OUT

UNLESS OTHERWISE SPECIFIED DIMENSIONS ARE IN INCHES TOLERANCES ON: DECIMALS ±.005 ANGLES ±	CONTRACT NO.		AMP AMP INCORPORATED HARRISBURG, PENNSYLVANIA		
	DR. <i>Bluffs</i> 8-5-70				
	MATERIAL	DR. <i>Bluffs</i> 8-31-70	NAME RECEPTACLE		
	SEE DASH NO.	APPD. <i>Jones</i> 9-9-70	54-POS. SERIES "HDR"		
	REL. <i>Donna</i> 9-9-70	SIZE	CODE IDENT NO.	NUMBER	
	DSGN/APPD.	B	00779	203803	
	OTHER APPD.	SCALE	2:1	SHEET 1 OF 1	