

**Preloaded Housings, .025 x .025 [0.64 x 0.64] Posted Contacts
for Automatic Wiring (Continued)**

54 Position

Material and Finish

Housing — See Chart

Contact Body —

Brass Plated as follows

A — .000030 [0.00076] Gold over

.000050 [0.00127] Nickel

B — Gold Flash over .000050

[0.00127] Nickel on entire contact, with
additional .000030 [0.00076] Gold in
contact area

Contact Sleeve — Stainless Steel

Related Product Data

Contact Size — 20

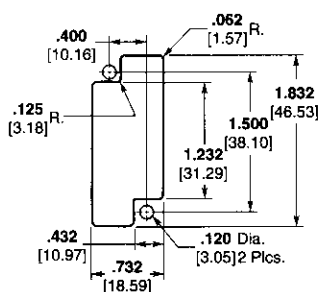
Pin Diameter — .040 [1.02]

Current Rating — 3.0 Amperes
(20 AWG [0.5–0.6 mm²] wire)

Replacement Contacts — Page 5178

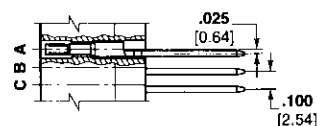
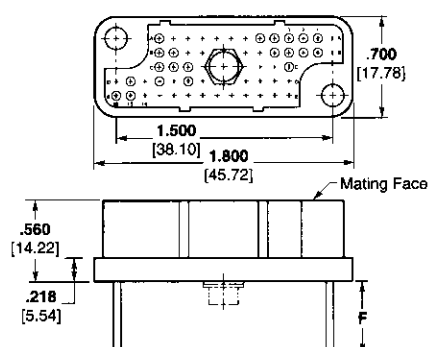
Mateable Connectors — Pages 5179
and 5180

Technical Documents — Page 5177



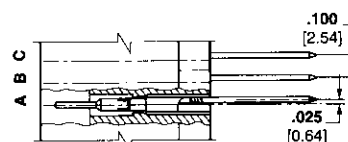
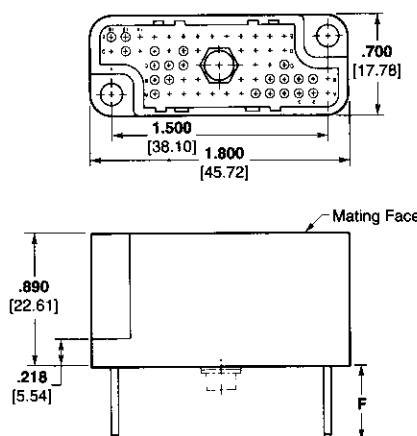
**Recommended Panel Cutout
for Receptacle**

Plug Assembly



End View

Receptacle Assembly



End View

Contact Finish	Max. Termination Per Post	Dim. F	Part Numbers			
			Plug Assembly Socket Contacts		Receptacle Assembly Pin Contacts	
			Phenolic	Diallyl Phthalate	Phenolic	Diallyl Phthalate
A	1	.242 6.15	5-204689-5	6-204689-4	1-204690-9	—
	2	.456 11.58	5-204689-6	6-204689-5	—	—
	3	.670 17.02	5-204689-7	6-204689-6	2-204690-1	3-204690-0
B	1	.242 6.15	6-204689-1	—	—	—
	3	.670 17.02	—	7-204689-2	2-204690-7	—

- Notes:** 1. Markings on receptacle assembly are on wiring side only.
2. In addition to combinations listed, all sizes are available with or without female jackscrews. Plugs are available with pins, and receptacles are available with sockets. Consult Tyco Electronics for details.
3. Fixed female jackscrews are included with these assemblies.