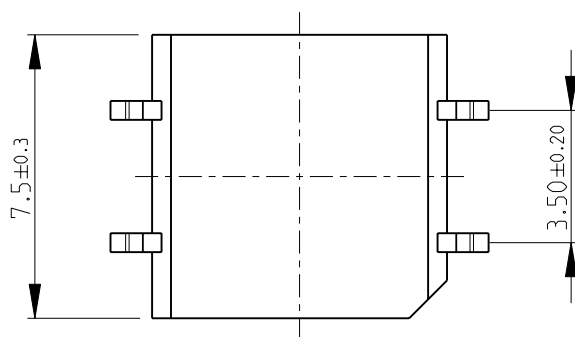
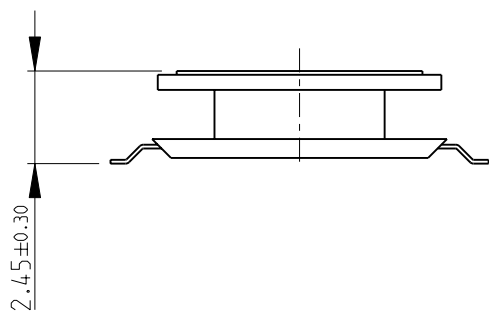
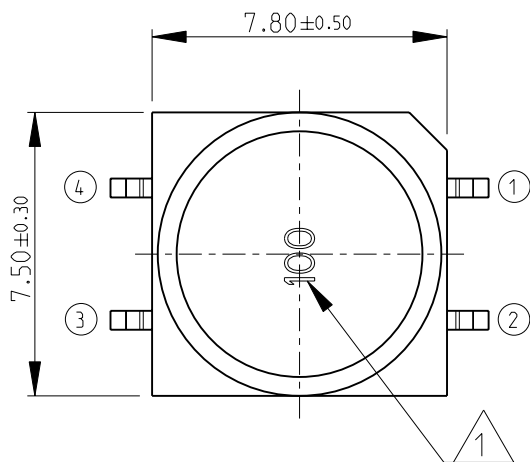


LOC	DIST	REVISIONS					
E	B	P	LTR	DESCRIPTION	DATE	DWN	APVD
			A1	AS PER ECR-09-013551	15-JUN-09	SM	St.P



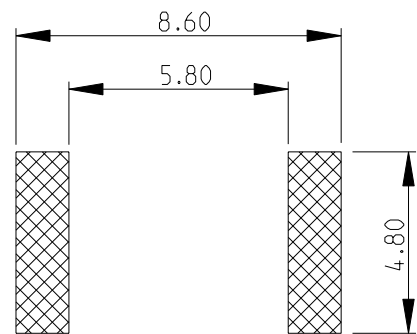
1 INDUCTANCE CODE

2 FOR FURTHER INFORMATION SEE DATA SHEET FOR 3636A SERIES-SHIELDED SMD POWER INDUCTORS

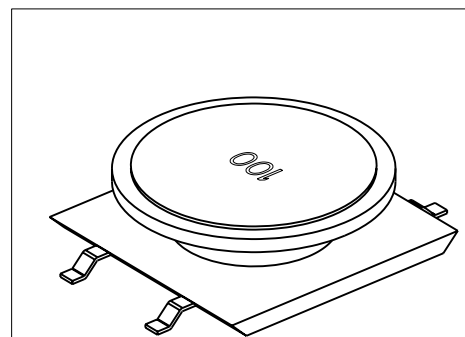
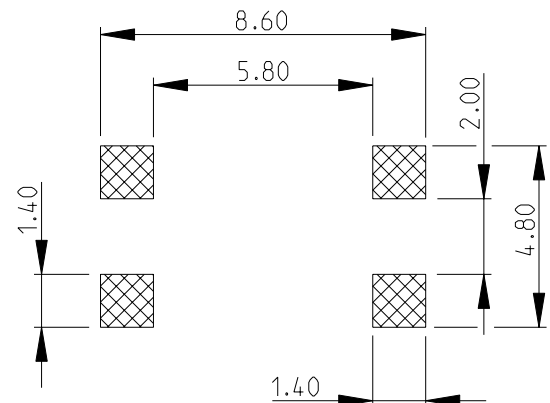
RoHS Compliant

RECOMMENDED LAND PATTERN

1R2M-6R8M AS SHOWN



8R2M-562M AS SHOWN




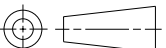
2008

RELEASED FOR PUBLICATION

THIS DRAWING IS UNPUBLISHED.

BY TYCO ELECTRONICS CORPORATION. ALL RIGHTS RESERVED.

© COPYRIGHT 2008

DIMENSIONS:		DWN	14-NOV-08	MATERIAL		FINISH							
mm		SUBHASH.M		-		-							
TOLERANCES UNLESS OTHERWISE SPECIFIED:		CHK	14-NOV-08	<div> Tyco Electronics</div> <div>Tyco Electronics Corporation</div> <div>Dorcan, Swindon, SN3 5HH</div>									
		PRAKASH.S											
		APVD	14-NOV-08	NAME									
		STEPHEN.P											
0 PLC	±0.2	PRODUCT SPEC		SHIELDED SMD POWER INDUCTORS									
1 PLC	±0.1	-											
2 PLC	± -	APPLICATION SPEC		SERIES 3636A									
3 PLC	± -												
4 PLC	± -	-		SIZE	CAGE CODE	DRAWING NO	RESTRICTED TO						
ANGLES	±5°			A 4	00779	©= 1676950	-						
		WEIGHT		-									
		-											
CUSTOMER DRAWING						SCALE	5:1	SHEET	1	OF	1	REV	A1