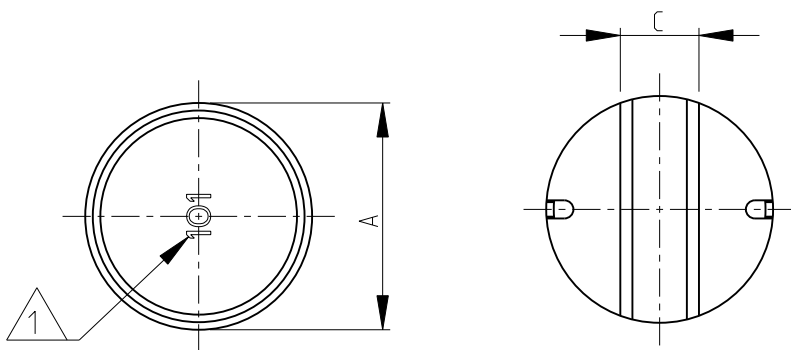
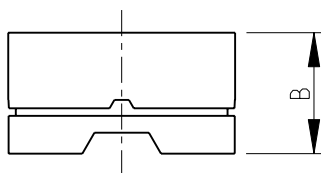


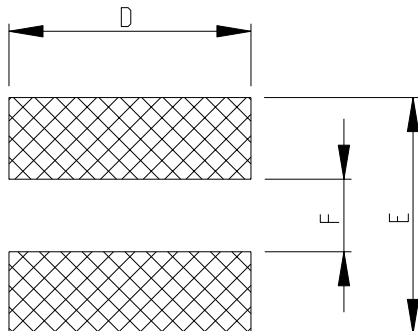
LOC	DIST	REVISIONS					
		P	LTR	DESCRIPTION	DATE	DWN	APVD
E	B		A	NEW RELEASE	14-NOV-08	SM	St.P



- 1 INDUCTANCE CODE
- 2 AVAILABLE IN 3 DIFFERENT SERIES
- 3 FOR FURTHER INFORMATION SEE DATA SHEET FOR 3637 SERIES-SHIELDED SMD POWER INDUCTORS



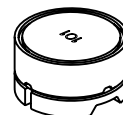
RECOMMENDED LAND PATTERN



RoHS Compliant

3637C	13.0±0.3	7.0±0.3	5.0	14.0	14.0	4.5
3637B	9.9±0.3	4.5±0.3	2.9	10.0	10.0	2.8
3637A	7.5±0.3	4.0±0.3	2.6	8.0	7.8	2.4
SERIES	A	B	C REF.	D REF.	E REF.	F REF.

SERIES 3637A



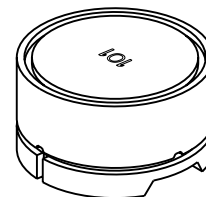
SCALE 2:1

SERIES 3637B



SCALE 2:1

SERIES 3637C



SCALE 2:1

2008

RELEASED FOR PUBLICATION

THIS DRAWING IS UNPUBLISHED.

BY TYCO ELECTRONICS CORPORATION. ALL RIGHTS RESERVED.

COPYRIGHT 2008

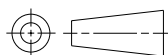


DIMENSIONS:

mm

TOLERANCES UNLESS OTHERWISE SPECIFIED:

0 PLC	±0.2
1 PLC	±0.1
2 PLC	±-
3 PLC	±-
4 PLC	±-
ANGLES	±5°



DWN SUBHASH.M 14-NOV-08

CHK PRAKASH.S 14-NOV-08

APVD STEPHEN.P 14-NOV-08

PRODUCT SPEC

-

APPLICATION SPEC

-

WEIGHT -

MATERIAL

-

FINISH

-



Tyco Electronics

Tyco Electronics Corporation
Dorcan, Swindon, SN3 5HH

NAME

SHIELDED SMD POWER INDUCTORS
SERIES 3637

SIZE

CAGE CODE

DRAWING NO

RESTRICTED TO

A 4

00779

C= 1676951

-

CUSTOMER DRAWING

SCALE

4:1

SHEET

1

OF 1

REV

A