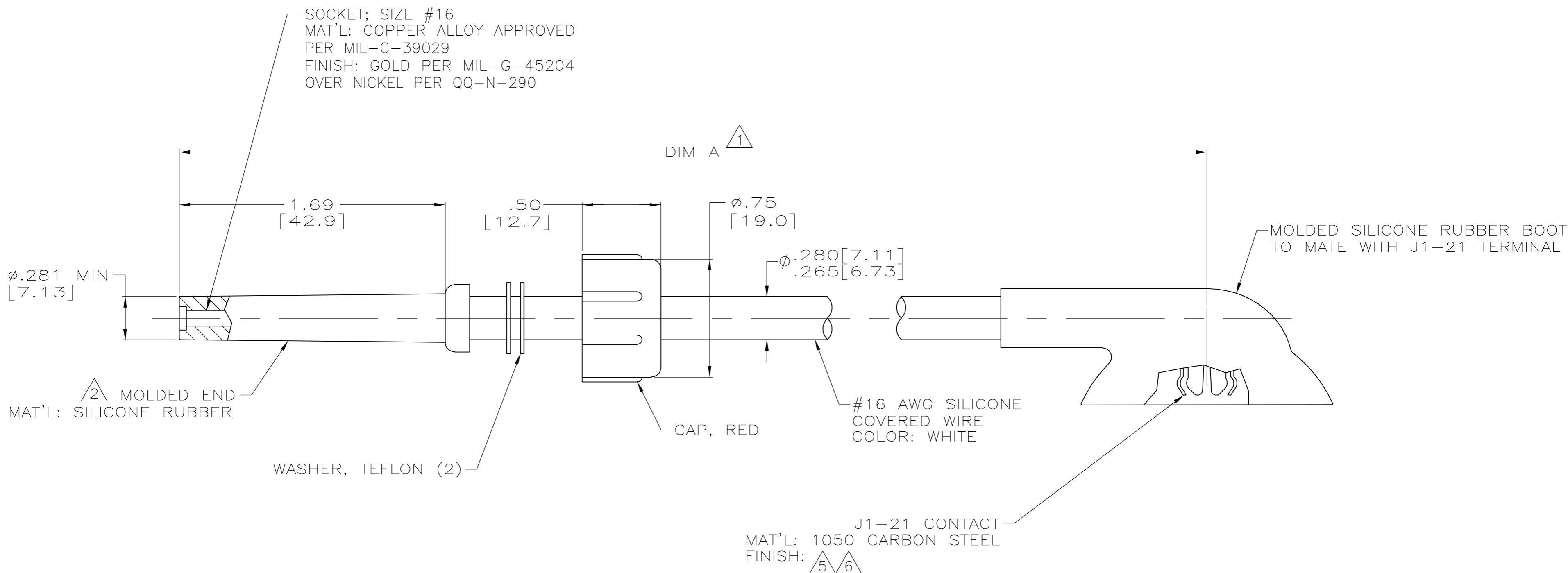


THIS DRAWING IS UNPUBLISHED. RELEASED FOR PUBLICATION - N/A .  
 © COPYRIGHT N/A BY TYCO ELECTRONICS CORPORATION. ALL RIGHTS RESERVED.

LOC	DIST	REVISIONS					
DF	S0	P	LTR	DESCRIPTION	DATE	DWN	APVD
		H		REV PER 0H14-0191-05	05-05	AA	DE

PART NO.	A DIM $\Delta$	FINISH	
846977-1	24.25 [615.9]	$\Delta 5$	$\Delta 4$
846977-2	30.00 [762.0]	$\Delta 5$	OBSOLETE
846977-3	60.00 [1524.0]	$\Delta 5$	OBSOLETE
846977-4	8.00 [203.2]	$\Delta 5$	
846977-5	15.00 [381.0]	$\Delta 5$	
846977-6	10.00 [254.0]	$\Delta 5$	OBSOLETE
846977-7	10.00 [254.0]	$\Delta 5$	OBSOLETE
846977-8	12.00 [304.8]	$\Delta 5$	
846977-9	41.00 [1041.4]	$\Delta 5$	OBSOLETE
1-846977-0	16.00 [406.4]	$\Delta 5$	OBSOLETE
1-846977-1	18.00 [457.2]	$\Delta 5$	
1-846977-2	20.00 [508.0]	$\Delta 5$	OBSOLETE
1-846977-3	36.00 [914.4]	$\Delta 5$	
5-846977-1	24.25 [615.9]	$\Delta 6$	
5-846977-4	8.00 [203.2]	$\Delta 6$	
5-846977-5	15.00 [381.0]	$\Delta 6$	

- $\Delta 1$  TOLERANCE: UP TO 24.00 [609.6] =  $\pm 1.2$  [ $\pm 3.0$ ]  
24.00 [609.6] & UP =  $\pm 1\%$
- $\Delta 2$  TO MATE WITH AMP LGH-1L RECEPTACLES WITH 1.69 [42.9] BARREL DEPTH.
- 3. MARKED PER MIL-STD-130
- $\Delta 4$  SPECIAL PACKAGING FOR -1 ONLY. ONE LEAD PER BAG.
- $\Delta 5$  PLATED 93/7 TIN-LEAD OR TIN PER ASTM-B-545 OVER NICKEL PER AMS-QQ-N-290.
- $\Delta 6$  PLATED TIN PER ASTM-B-545 OVER NICKEL PER AMS-QQ-N-290.



THIS DRAWING IS A CONTROLLED DOCUMENT.		DWN C.C.THOMAS 24-APR-97	Tyco Electronics Corporation Harrisburg, Pa 17105-3608	
DIMENSIONS: INCHES	TOLERANCES UNLESS OTHERWISE SPECIFIED:	CHK S.GLATFELTER 09-SEP-97	NAME S.GLATFELTER	
	0 PLC $\pm -$	APVD S.GLATFELTER 09-SEP-97	PRODUCT SPEC	
	1 PLC $\pm -$		APPLICATION SPEC	
MATERIAL	FINISH	WEIGHT	SIZE A2	CAGE CODE 00779
			DRAWING NO C=846977	
		CUSTOMER DRAWING	SCALE 2:1	SHEET 1 OF 1
			RESTRICTED TO	REV H