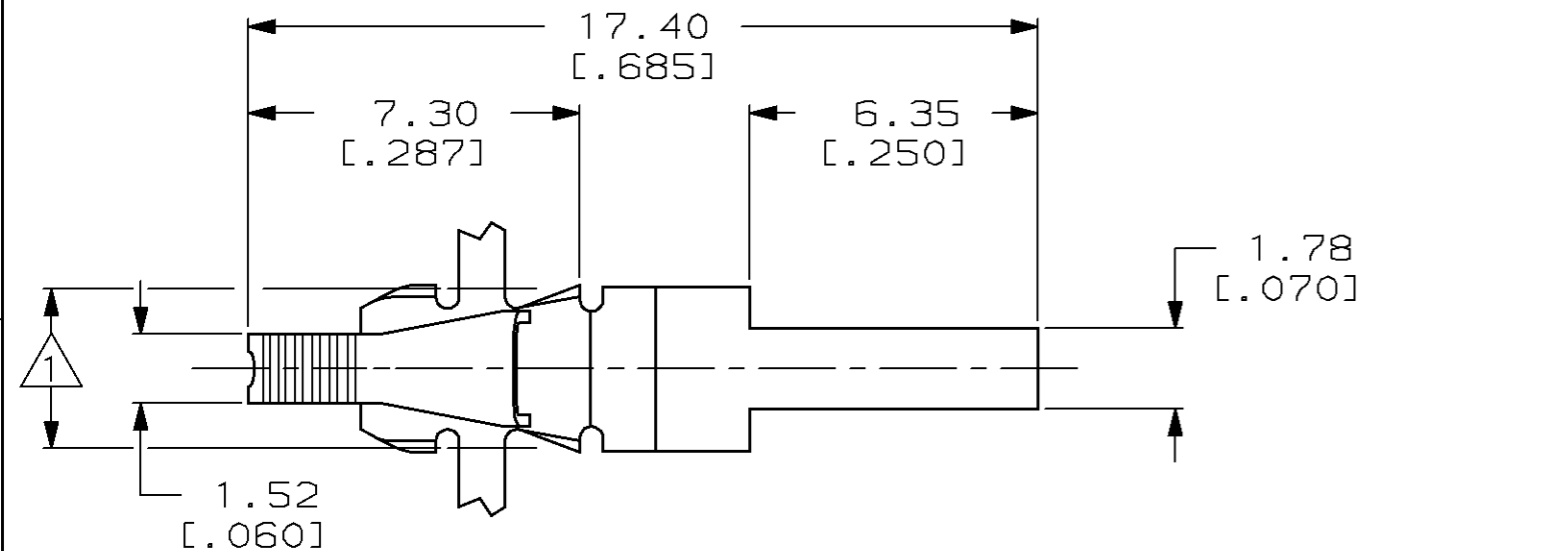
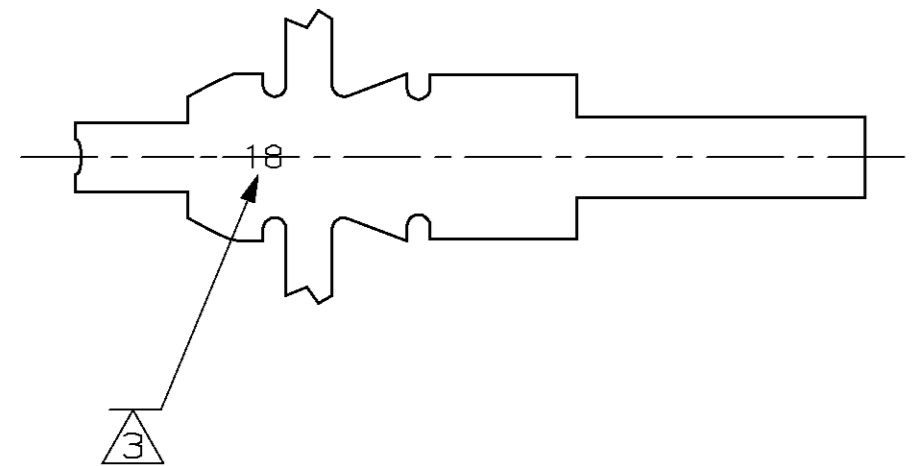
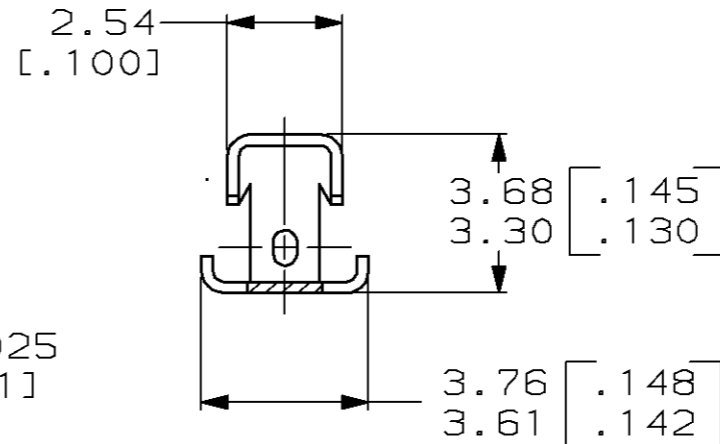
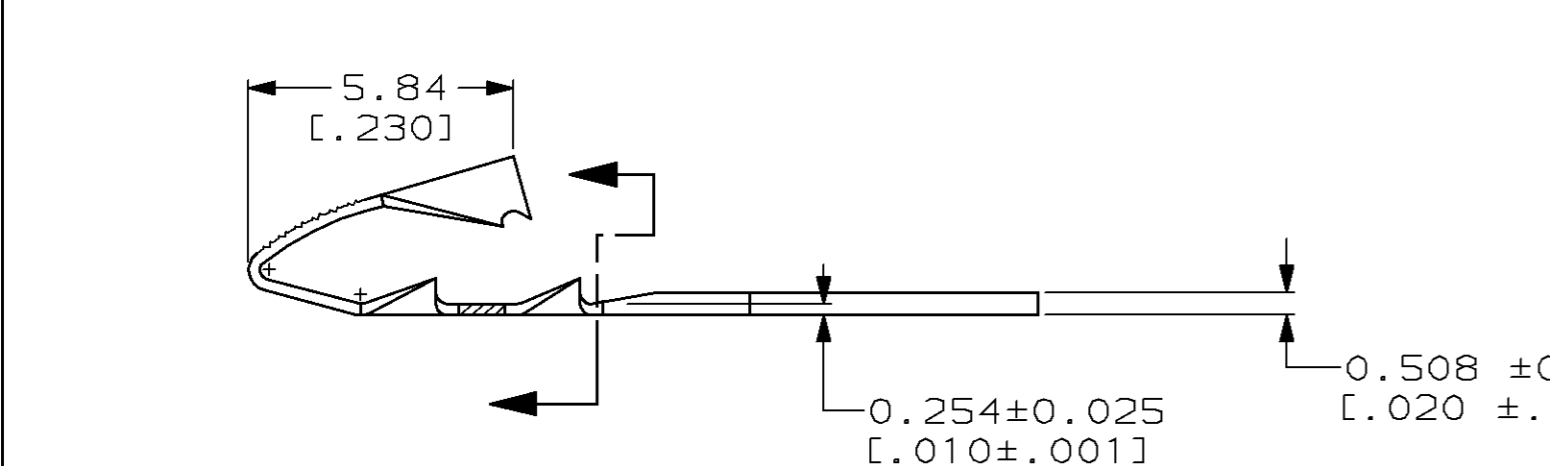


THIS DRAWING IS UNPUBLISHED. RELEASED FOR PUBLICATION, 19 .
 © COPYRIGHT 19 BY AMP INCORPORATED. ALL INTERNATIONAL RIGHTS RESERVED.

LOC	DIST	P	F	REVISIONS				
				ZONE	LTR	DESCRIPTION	DATE	APPD
AF	50				H	REVISED PER 0G1A-0287-98	31AUG98	PF/MF



- ① 3.78±0.13 [.149±.005] MAX APPLICATOR CUT-OFF.
- ② CONTINUOUS STRIP ON REELS WITH TERMINALS LOCATED ON 6.10±0.08 [.240±.003] CENTERS.
- ③ IDENTIFICATION NUMBER 18 FOR MAGNET WIRE RANGE.



METRIC

0.10-0.25mm [#38-#30] AWG		63041-1	
MAGNET WIRE RANGE		PART NO	
DO NOT SCALE PRINT. UNLESS SPECIFIED DIMENSIONS IN mm [INCHES] TOLERANCES ON: 2 PLC DEC ± 0.25 [.010] 3 PLC DEC ± - ANGLES ± -		AMP AMP INCORPORATED Harrisburg, Pa. 17105	
MATERIAL 082 PRE-MILLED BRASS		NAME POST, 1.78 [.070] X 0.51 [.020], MINI MAG-MATE™	
FINISH 0.002032 [.000080] MIN TIN		SIZE B	CAGE CODE 00779
DR 1/31/92 MICHAEL S. FEHER CHK 2/3/92 JEFF R. RUTH APPD 2/4/92 NELSON E. NEFF APPD 2/4/92 TERRY L. SHUTTER PRODUCT SPEC 108-2016 APPLICATION SPEC 114-2047 WEIGHT -		DRAWING NO 63041	SHEET 1 OF 1
		SCALE 6:1	