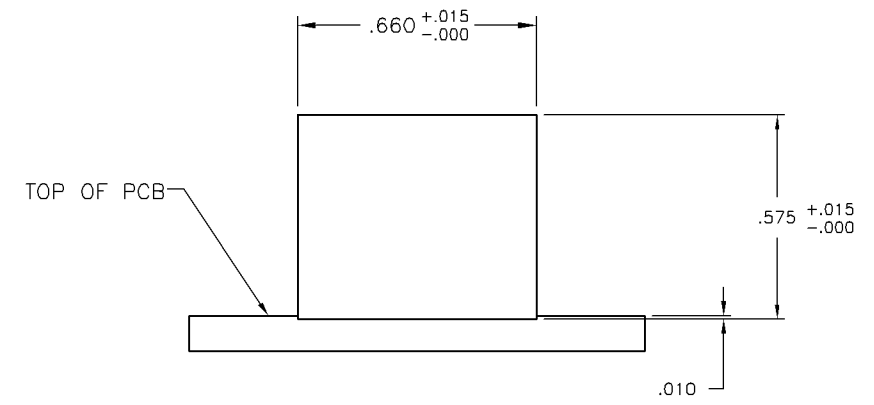
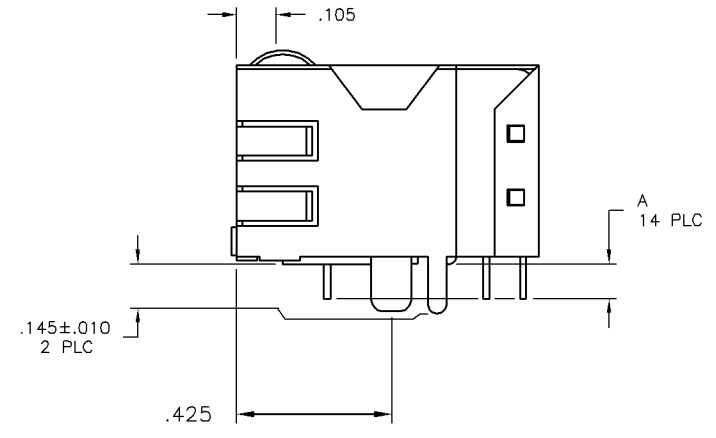
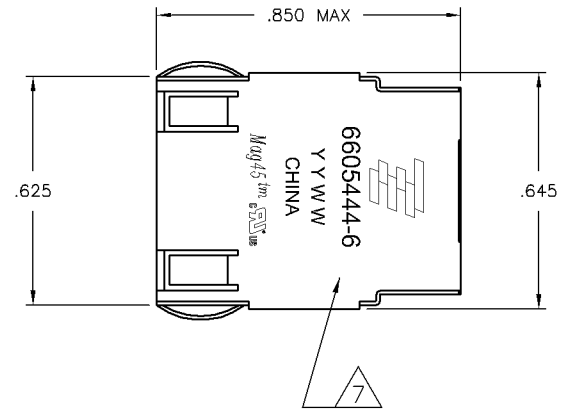
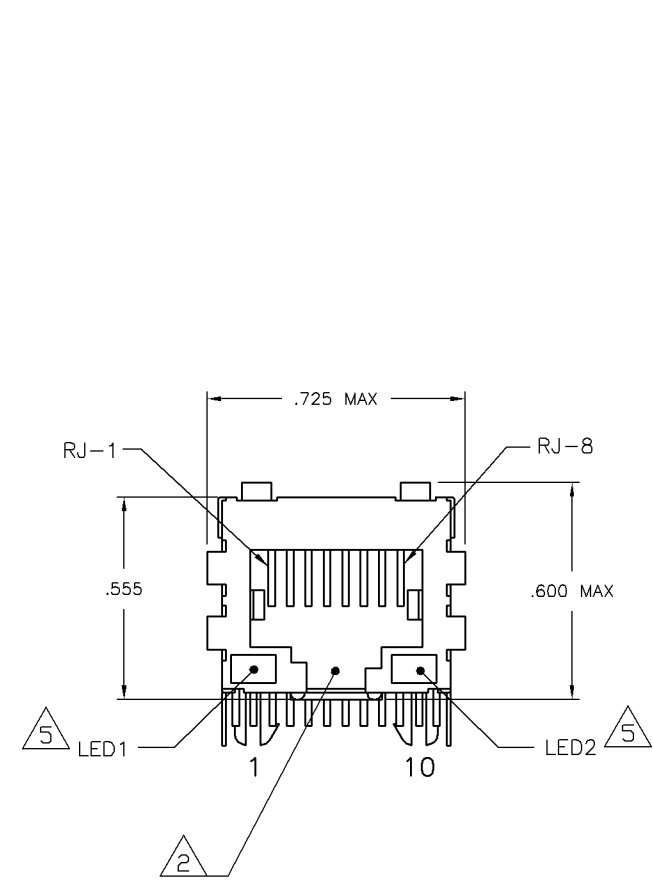


**MECHANICAL:**



**Suggested Panel Cutout**

- △ MATERIALS:  
 HOUSING - THERMOPLASTIC PET POLYESTER FLAMMABILITY RATING UL 94V-0.  
 SHIELD - .010" THICK, C26800 BRASS PREPLATED WITH 30μINCH SEMI-BRIGHT NICKEL. SOLDER TABS POST DIPPED WITH 100μINCH MIN SAC SOLDER.  
 MOD JACK CONTACTS - 0.0157 X 0.018" PHOSPHOR BRONZE, 50μINCH MIN OVERALL NICKEL UNDERPLATE, WITH SELECT 50μINCH MIN HARD GOLD FINISH PLATE SOLDER TAILS WITH 100μINCH MIN MATTE TIN AND/OR SAC SOLDER DIP.  
 LIGHT EMITTING DIODE(LED) - DIFFUSED EPOXY LENS, .020" x .020" CARBON STEEL WIREFRAME LEADS PRE-PLATED WITH 80μINCH SILVER OVER 40μINCH NICKEL UNDERPLATE OVER 40μINCH COPPER UNDERPLATE. POST-PLATED WITH 100μINCH MIN MATTE TIN AND/OR SAC SOLDER DIP OR PURE TIN SOLDER DIP.
- △ RJ45 JACK CAVITY CONFORMS TO FCC RULES AND REGULATIONS PART 68, SUB PART F.
- △ MAGNETICS  
 -IMPEDANCE: 100 OHMS  
 -TURNS RATIO (CHIP-CABLE): 1:1 ALL FOUR PAIRS  
 -OPEN CIRCUIT INDUCTANCE (OCL): 350μH MIN @100kHz, 0.1VRMS, 8mADC BIAS FROM 0°C TO 70°C, ALL FOUR PAIRS  
 -ALL FOUR PAIRS BI-DIRECTIONAL  
 -PERFORMANCE @ 25°C:  
 INSERTION LOSS (IL): 1.1dB MAX FROM 0.5MHz TO 100MHz  
 RETURN LOSS (RL): 18dB MIN FROM 0.5MHz TO 40MHz  
 12-20LOG(f/80)dB MIN FROM 40.1MHz TO 100MHz  
 CROSSTALK ATTENUATION: 35dB MIN FROM 0.5MHz TO 40MHz  
 33-20LOG(f/50)dB MIN FROM 40.1MHz TO 100MHz  
 COMMON MODE REJECTION RATIO (CMRR): 30dB MIN FROM 0.5MHz TO 100MHz  
 -ISOLATION VOLTAGE: COMPLIES WITH IEEE802.3 2002, PARA 40.6.1.1, ITEM b.
- 4. OPERATING TEMPERATURE: FROM 0°C TO +70°C.
- △ THE 250 OHM LED RESISTORS ARE OPTIONAL, PLEASE SEE CHART FOR PRESENCE OR ABSENCE OF LED RESISTORS. IF THE LED WITHOUT 250 OHM RESISTORS, LED IS DRIVEN WITH CONSTANT CURRENT AT APPROX 20mA.  
 LED COLOR: DOMINANT WAVELENGTH (λD): GREEN 568 nm TYP. @ IF=20mA  
 FORWARD VOLTAGE (VF): GREEN 2.2V TYP. @ IF=20mA  
 DOMINANT WAVELENGTH (λD): YELLOW 588 nm TYP. @ IF=20mA  
 FORWARD VOLTAGE (VF): YELLOW 2.1V TYP. @ IF=20mA  
 DOMINANT WAVELENGTH (λD): ORANGE 605 nm TYP. @ IF=20mA  
 FORWARD VOLTAGE (VF): ORANGE 2.1V TYP. @ IF=20mA.  
  
 IF THE LED WITH 250 OHM RESISTORS, LED IS DRIVEN WITH 5V VOLTAGE AND THE MAX OPERATING CURRENT IS 20mA.  
 LED COLOR : DOMINANT WAVELENGTH (λD): GREEN 568 nm TYP. @ VF=5V  
 FORWARD CURRENT (IF): GREEN 12 mA TYP. @ VF=5V
- △ INDICATED MAGNETIC CONNECTIONS ARE SYMMETRICAL TO SUPPORT AUTO-MDI/MDIX.
- △ TYCO ELECTRONICS LOGO, PART NUMBER, DATE CODE, COUNTRY OF ORIGIN AND AGENCY APPROVAL MARKING IN APPROXIMATE LOCATION SHOWN.
- 8. THESE PARTS ARE RECOMMENDED FOR WAVE SOLDERING PROCESS, PREHEAT TEMPERATURE IS 120°C TO 160°C, 120 SECONDS TO 180 SECONDS, PEAK WAVE SOLDERING TEMPERATURE IS 260°C MAX, 10 SECONDS MAX.

.145±.010	GREEN/YELLOW	NO	GREEN/YELLOW	NO	2-6605444-6
.090±.010	GREEN	NO	GREEN/ORANGE	NO	1-6605444-8
.090±.010	GREEN/ORANGE	NO	YELLOW	NO	1-6605444-3
.090±.010	GREEN	YES	GREEN	YES	1-6605444-1
.090±.010	GREEN/YELLOW	NO	GREEN/YELLOW	NO	6605444-6
A	LED1	250 OHMS RESISTOR	LED2	250 OHMS RESISTOR	PART NUMBER

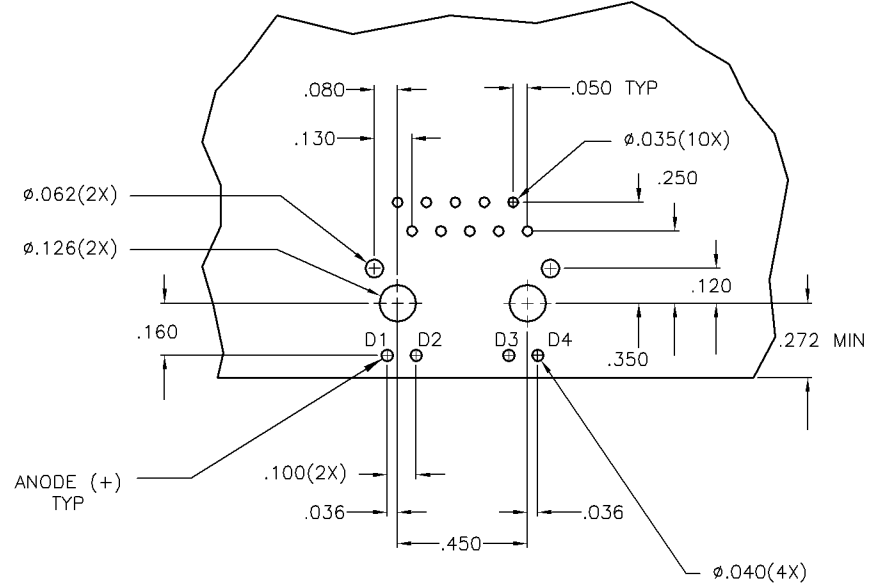
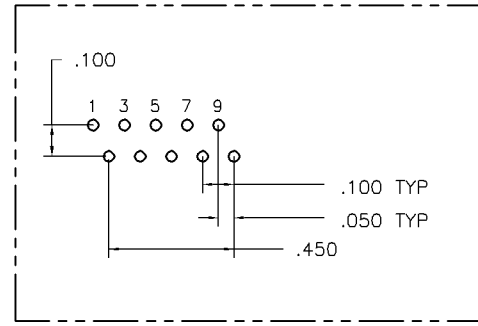
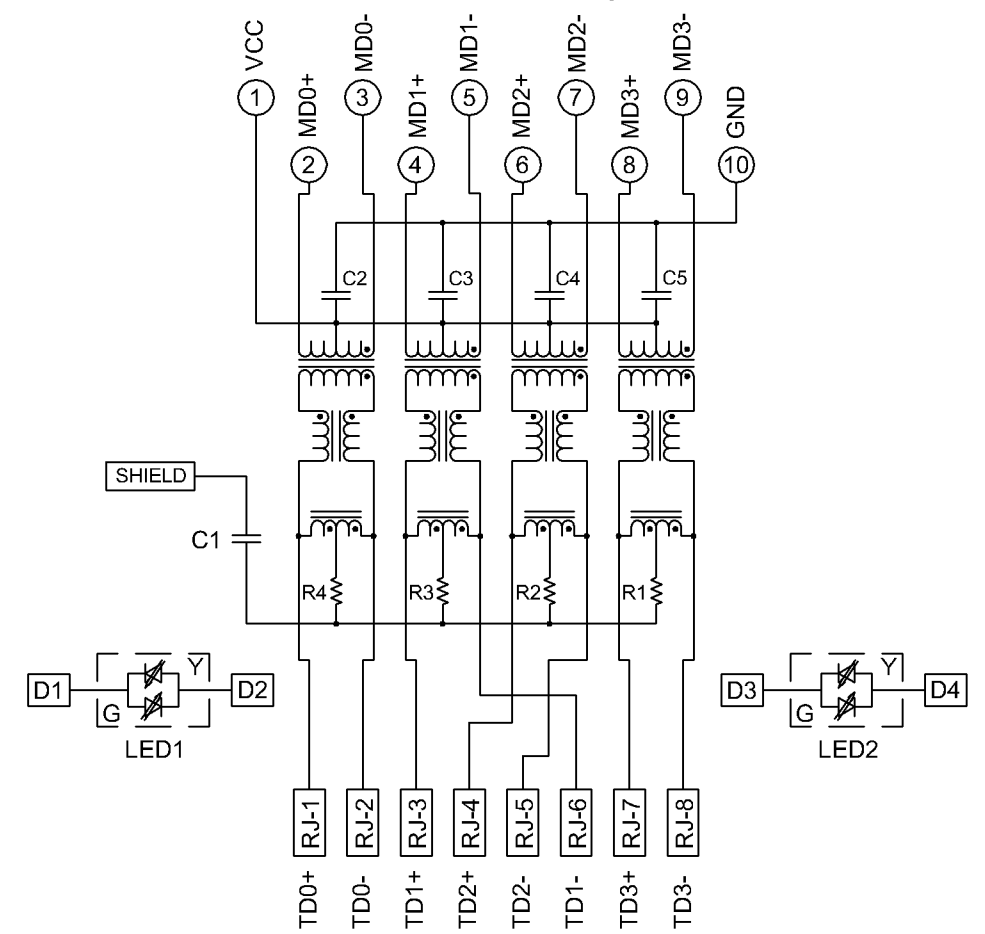
THIS DRAWING IS A CONTROLLED DOCUMENT. **DRN** G. ATTADIA - DOCKS **DATE** 09MAR2005 **BY** Tyco Electronics Corporation  
**CHK** D. FAROLE **DATE** 09MAR2005 **BY** Tyco Electronics Changping, China

DIMENSIONS:	TOLERANCES UNLESS OTHERWISE SPECIFIED:	NAME	1X1 MAG45(TM), 4G4P1 GIGABIT ETHERNET SCHEMATIC (10 PIN FOOTPRINT), 4G05P1 SERIES MAGNETIC CIRCUIT, SHIELDED, WITH LEDS
INCHES	0 PLC ± - 1 PLC ± - 2 PLC ± .010 3 PLC ± .005 4 PLC ± - ANGLES ± -	PRODUCT SPEC	108-2100
MATERIAL	FINISH	SIZE	A1
CUSTOMER DRAWING		SCALE	1:1

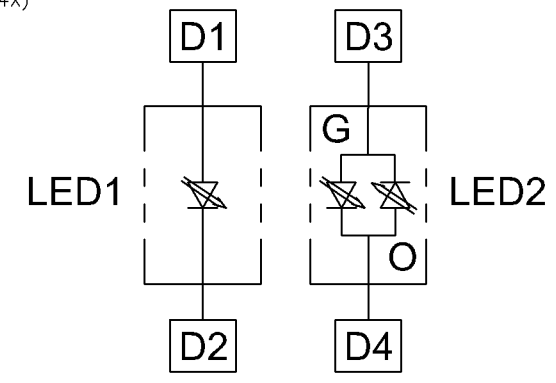
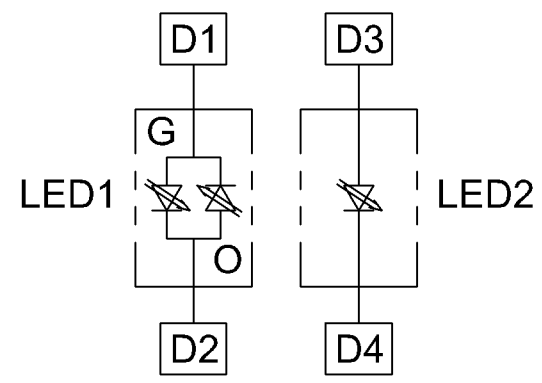
DATE CODE 00779 DRAWING NO 6605444 SHEET 1 OF 2 REV D

ELECTRICAL:

4G05P1 Series GIGABIT Magnetic Circuit



- C1 = 1000 pF, 2kV CAPACITOR
- R1-R4 = 75 OHMS, 1/16 W RESISTORS
- C2-C5 = 0.1uF, 50V, X7R CAPACITORS



THIS DRAWING IS A CONTROLLED DOCUMENT.		DRW: G. ATTADIA- DDC65	DATE: 09MAR2005	Tyco Electronics Tyco Electronics Corporation Changping, China	
DIMENSIONS: INCHES		CHK: D. FAROLE	DATE: 09MAR2005	NAME: 1X1 MAG45(TM), 4G4P1 GIGABIT ETHERNET	
TOLERANCES UNLESS OTHERWISE SPECIFIED:		APVD: D. FAROLE	DATE: 09MAR2005	SCHEMATIC (10 PIN FOOTPRINT), 4G05P1 SERIES	
0 PLD ± -	1 PLD ± -	PRODUCT SPEC: 10B-2100	APPLIC: 10B-2100	MAGNETIC CIRCUIT, SHIELDED, WITH LEDs	
2 PLD ± .010	3 PLD ± .008	APPLIC: 10B-2100	APPLIC: 10B-2100	SIZE: DATE CODE: DRAWING NO: A1 00779 C-6605444	
4 PLD ± -	ANGLES: FINISH: SEE SHEET 1	WEIGHT: -	SCALE: 1:1	SHEET: 2 OF 2	REV: D
MATERIAL: SEE SHEET 1		CUSTOMER DRAWING			