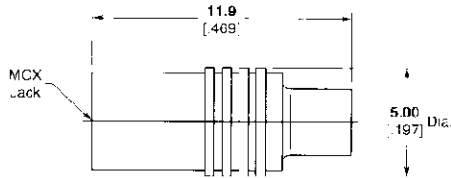
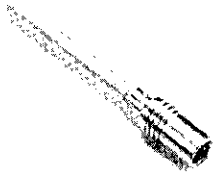


**MCX Connectors** (Continued)

**Straight Cable Jack, Direct Solder Attachment**

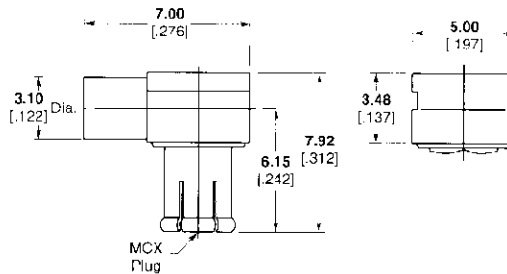
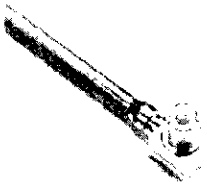
2.16 [.085] Dia.



Cable	Plating	M/A-COM Model No.	Part No.
RG-405/U [.085]	Gold	5802-7985-09	<b>1060774-1</b>
.047	Gold	5802-7947-09	<b>1060774-2</b>

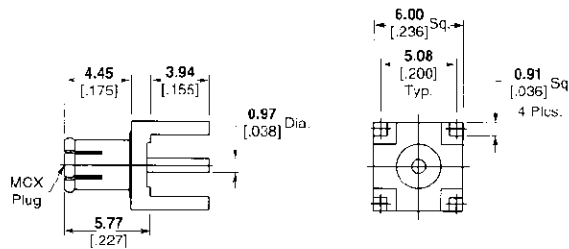
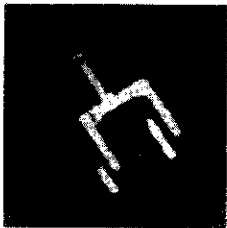
**Right Angle Plug Receptacle, Direct Solder Attachment**

For Semi-Rigid Cable  
2.16 [.085] Dia.



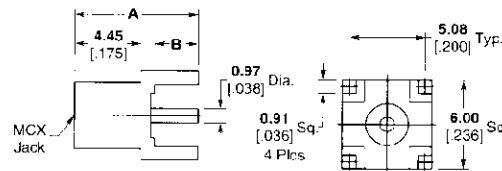
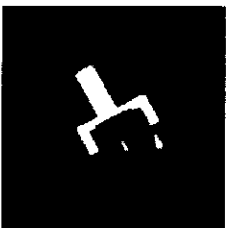
Cable	Plating	M/A-COM Model No.	Part No.
RG-405/U	Gold	5807-7985-09	<b>1060787-1</b>

**Vertical Plug Receptacle, PC Board**



Plating	M/A-COM Model No.	Part No.
Nickel	5863-0000-10	<b>1061015-1</b>
Gold	5863-0000-09	<b>1085221-1</b>

**Vertical Jack Receptacle, PC Board**



Dim. A	Dim. B	Plating	M/A-COM Model No.	Part No.
8.28	2.92	Nickel	5862-5002-10	<b>1060985-1</b>
.326	.115	Gold	5862-5002-09	<b>1060984-1</b>
9.30	3.94	Nickel	5862-5003-10	<b>1060989-1</b>
.366	.155	Gold	5862-5003-09	<b>1330126-1</b>
7.09	1.73	Nickel	5862-5004-10	<b>1060996-1</b>
.279	.068	Gold	5862-5004-09	<b>1060995-1</b>