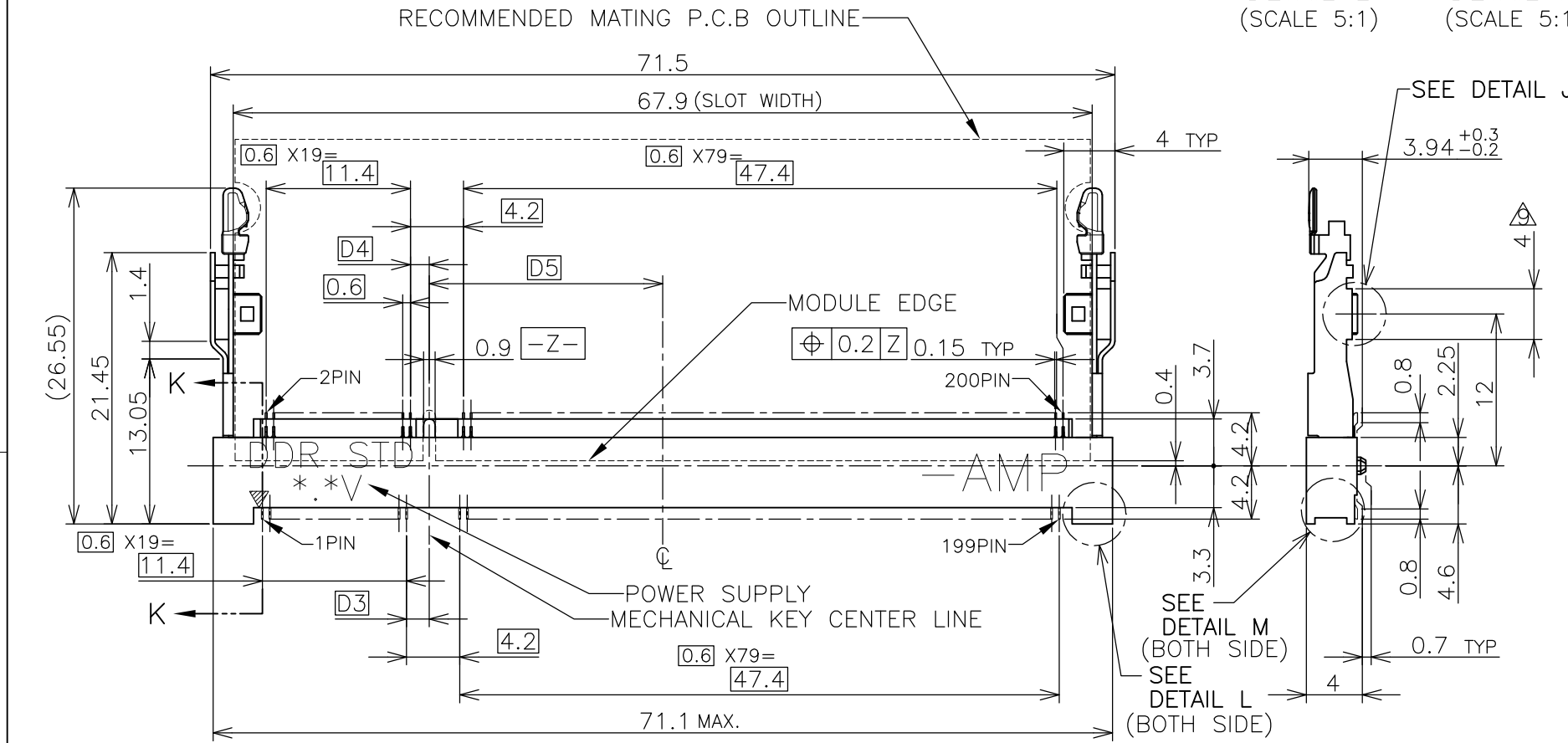
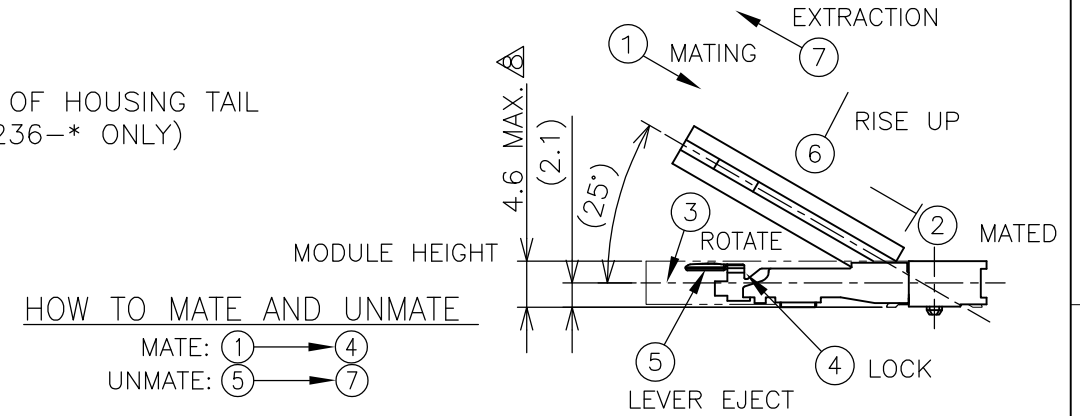
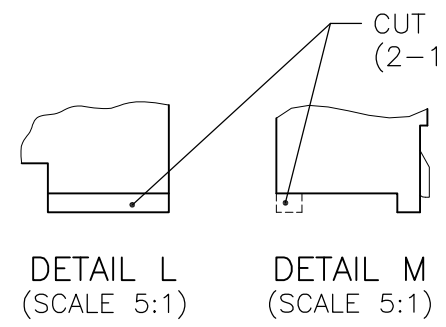
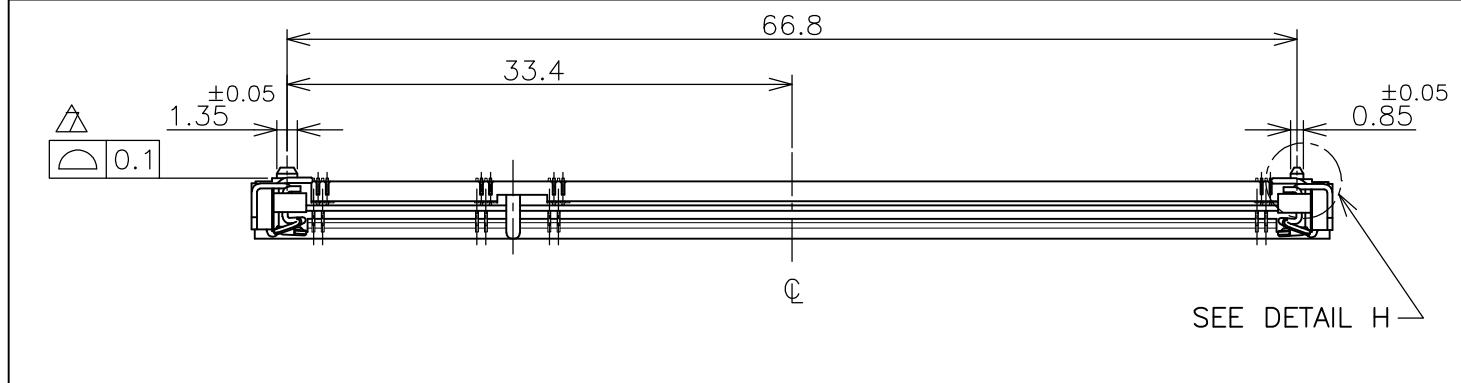
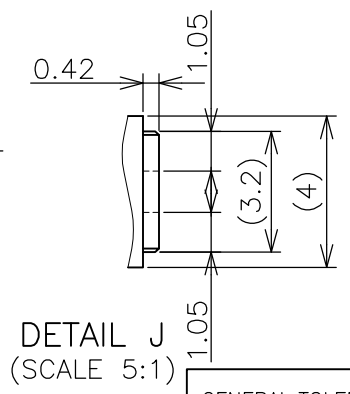
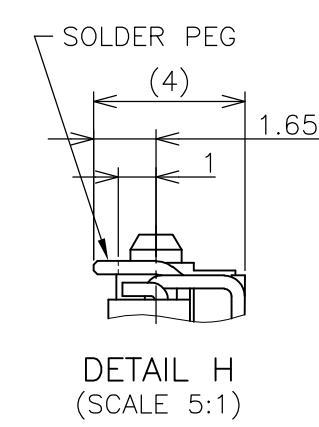
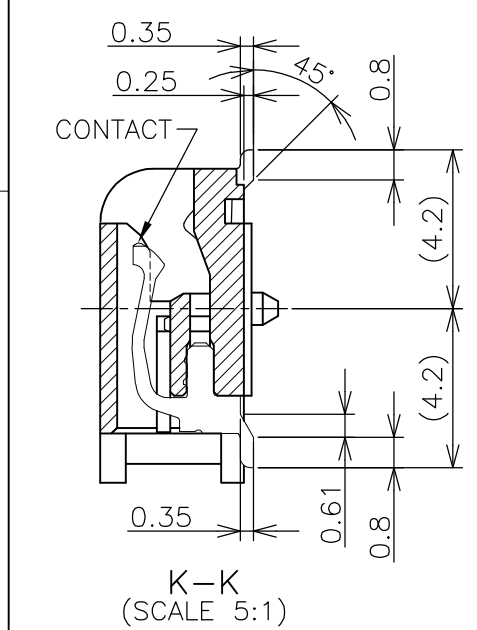


THIS DRAWING IS UNPUBLISHED. RELEASED FOR PUBLICATION NOV. 2004.
 © COPYRIGHT 2004 BY TYCO ELECTRONICS CORPORATION. ALL RIGHTS RESERVED.

| LOC | DIST | REVISIONS | | | |
|-----|------|-------------------------|-----------|-----|------|
| P | LTR | DESCRIPTION | DATE | DWN | APVD |
| J | | | | | |
| | F | REVISED (ECR-08-029149) | 18NOV2008 | B.W | S.Y |



- (APPLIED TO SHEET 1-2)
- MATERIAL ; HOUSING: HIGH TEMPERATURE THERMO PLASTIC UL94V-0
CONTACT: COPPER ARROY
LOCK LEVER: STAINLESS STEEL
 - FINISH ; CONTACT AREA: GOLD FLASH ON 0.0013MIN ALL OVER NICKEL.
SOLDERING AREA: GOLD FLASH PLATING.
LOCK LEVER: TIN PLATING.
 - MECHANICAL KEY POSITION OF CONNECTOR SEE TABLE.
 - TOLERANCES NON-CUMULATIVE.
 - NOT TO SCALE.
 - INSIDE MUST BE RESIST COAT EXCEPT SOLDER PATTERN.
 - COPLANARITY : 0.1 MAX.
 - THE FLOATING VALUE BY SOLDERING IS NOT INCLUDED.
 - NOT MATING CONDITION.
 - IF THE MODULE DOESN'T INSERT AND LOCK IN THE LATCH SMOOTHLY, OPEN WIDE BOTH LATCHES BY MANUAL. AND THE MODULE MUST BE INSERTED AND LOCKED IN THE LATCH.
 - FINISH ; CONTACT AREA: GOLD 0.00076MIN PLATING ON 0.0013MIN ALL OVER NICKEL.
SOLDERING AREA: GOLD FLASH PLATING.
LOCK LEVER: TIN PLATING.



GENERAL TOLERANCE
 10 ≥ : ±0.2
 30 ≥ > 10: ±0.25
 100 ≥ > 30: ±0.3
 ANGLES: ±3'

| FINISH | TOOLING STATUS | REMARK | POWER SUPPLY | D5 | D4 | D3 | POS | PART NO. |
|--------|----------------|-----------------------------|--------------|-------|-----|-----|-----|-------------|
| △ | AVAILABLE | POROSITY SEALING | 1.8V (DDR2) | 17.55 | 2.4 | 2.7 | 200 | 1827236-6 |
| △ | AVAILABLE | CUT OUT OF POROSITY SEALING | 1.8V (DDR2) | 17.55 | 2.4 | 2.7 | 200 | 3-1827236-4 |
| △ | AVAILABLE | CUT OUT OF HOUSING TAIL | 1.8V (DDR2) | 17.55 | 2.4 | 2.7 | 200 | 2-1827236-4 |
| △ | AVAILABLE | BOSSLESS | 1.8V (DDR2) | 17.55 | 2.4 | 2.7 | 200 | 1-1827236-4 |
| △ | AVAILABLE | — — | 1.8V (DDR2) | 17.55 | 2.4 | 2.7 | 200 | 1827236-4 |
| — — | NOT AVAILABLE | — — | 2.5V (DDR1) | 18.45 | 1.5 | 1.8 | 200 | — |

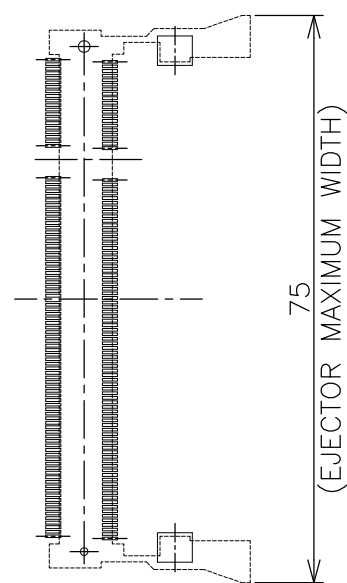
THIS DRAWING IS A CONTROLLED DOCUMENT.

| | | | | | |
|------------------|-------------|---------|--|---------------------------|---------------|
| DWN | T.FUMIKURA | 30NOV04 | | Tyco Electronics AMP K.K. | |
| CHK | T.KUSUHARA | 30NOV04 | | Kawasaki, Japan | |
| APVD | H.MURAMATSU | 30NOV04 | | NAME | |
| PRODUCT SPEC | | | DDR1 & DDR2 SODIMM SOCKET 0.6mm PITCH | | |
| APPLICATION SPEC | | | 200POS LOW PROFILE STANDARD TYPE (LATCH DIRECT SOLDERING TYPE) | | |
| WEIGHT | 3.2 g | A3 | 00779 | C=1827236 | RESTRICTED TO |

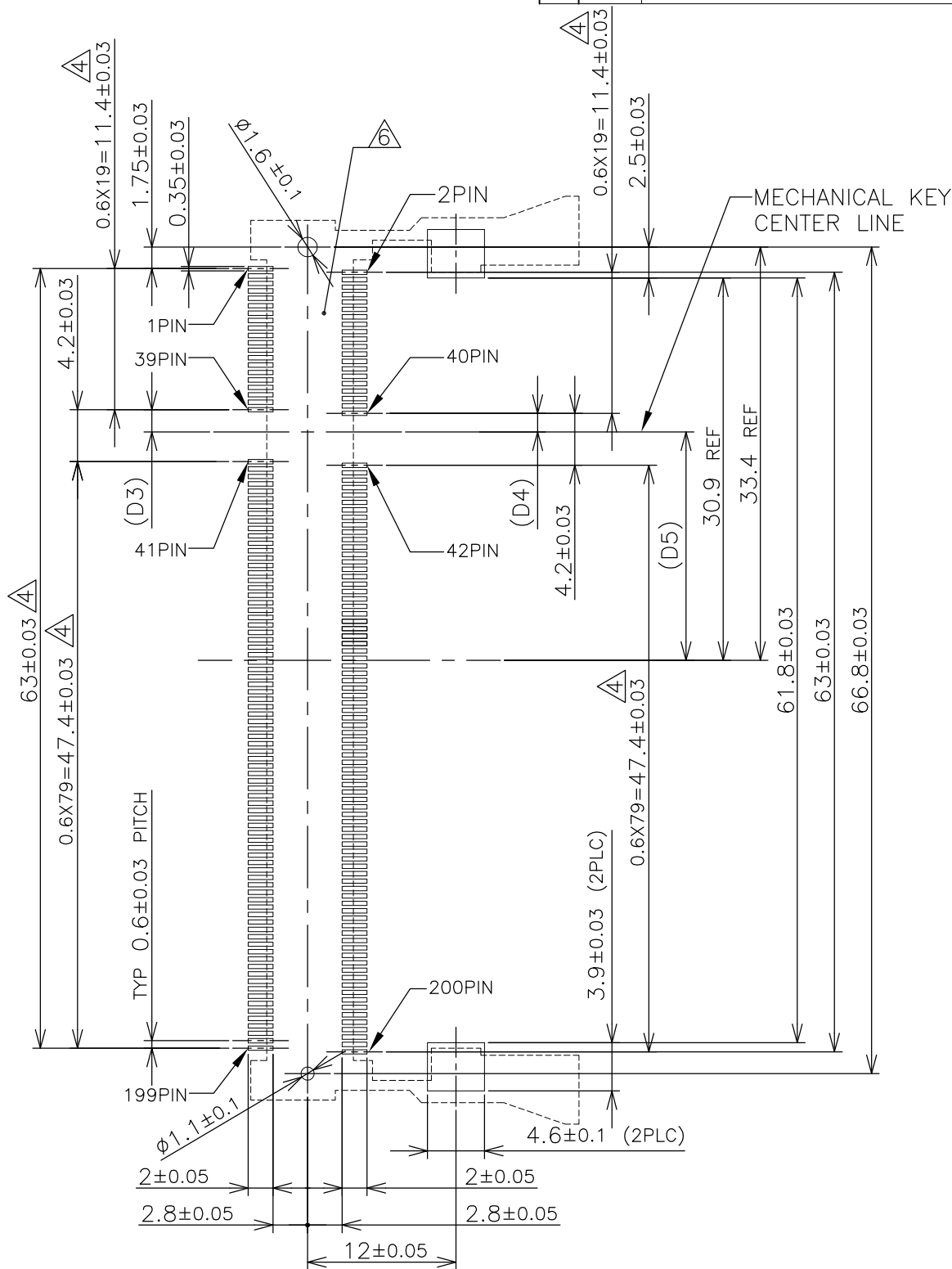
CUSTOMER DRAWING SCALE 2:1 SHEET 1 OF 4 REV F

| LOC | DIST | REVISIONS | | | | | |
|-----|------|-----------|-----|-------------|------|-----|------|
| J | | P | LTR | DESCRIPTION | DATE | DWN | APVD |
| | | - | - | SEE SHEET 1 | - | - | - |

REFERENCE P.C. BOARD PATTERN LAYOUT (CONNECTOR MOUNTING SIDE)



REAL SIZE (SCALE 1:1)

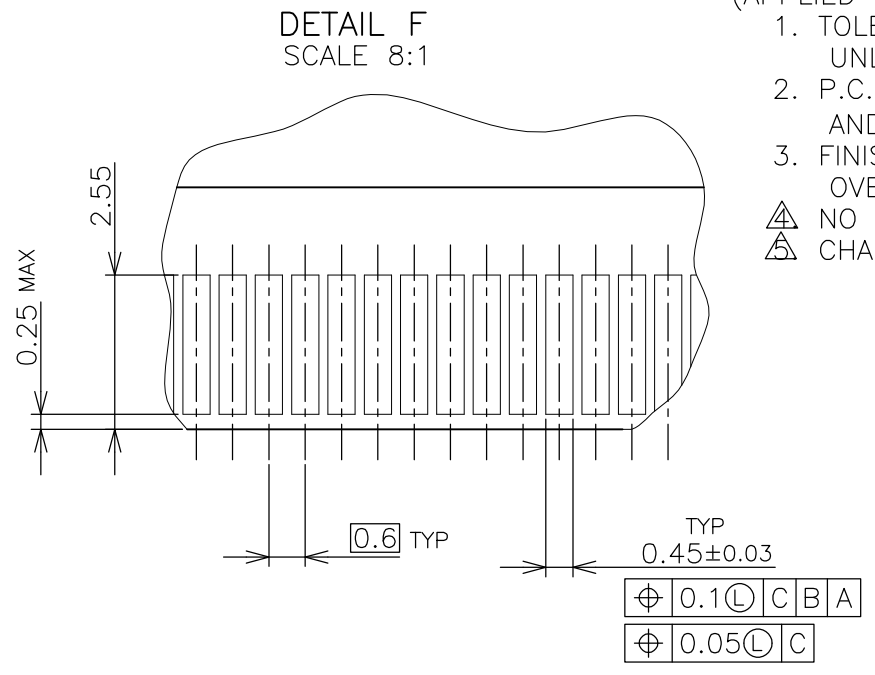
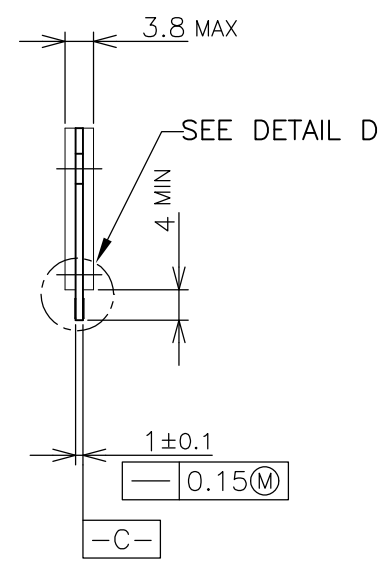
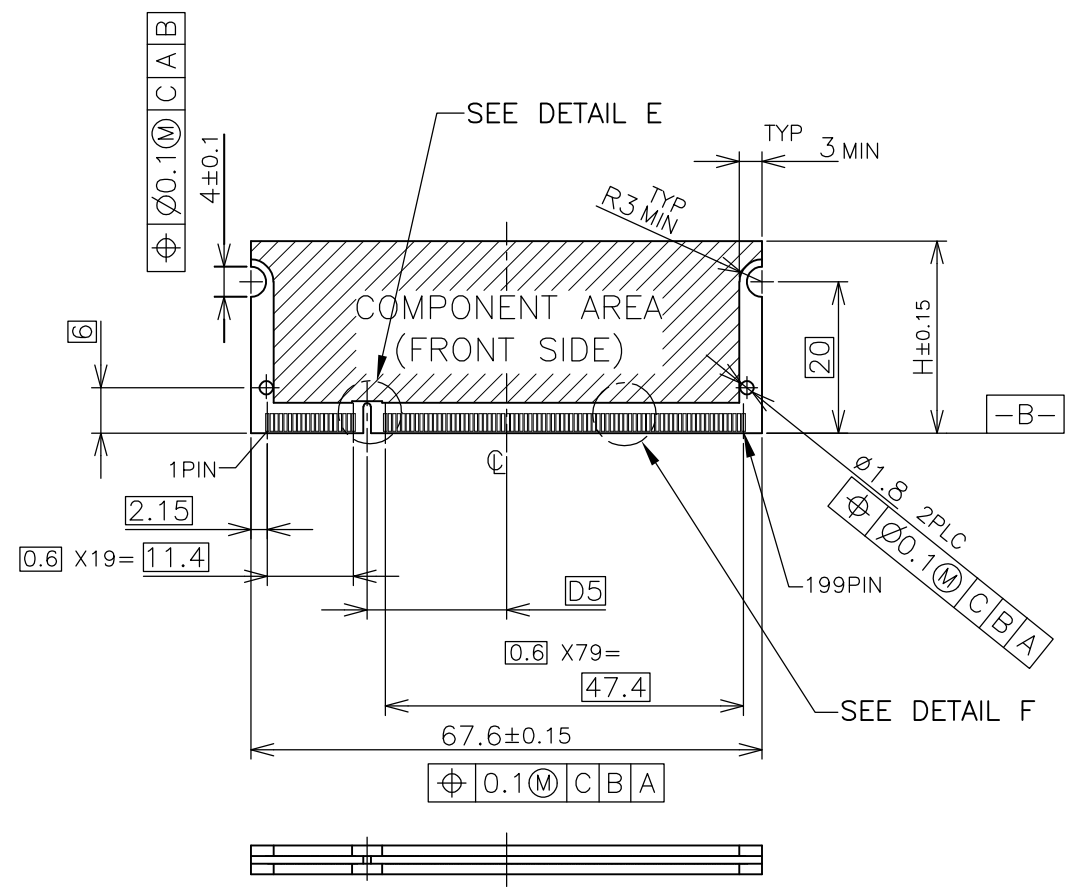


| | | | |
|--------------|-------|-----|-----|
| 1.8V | 17.55 | 2.4 | 2.7 |
| 2.5V | 18.45 | 1.5 | 1.8 |
| POWER SUPPLY | D5 | D4 | D3 |

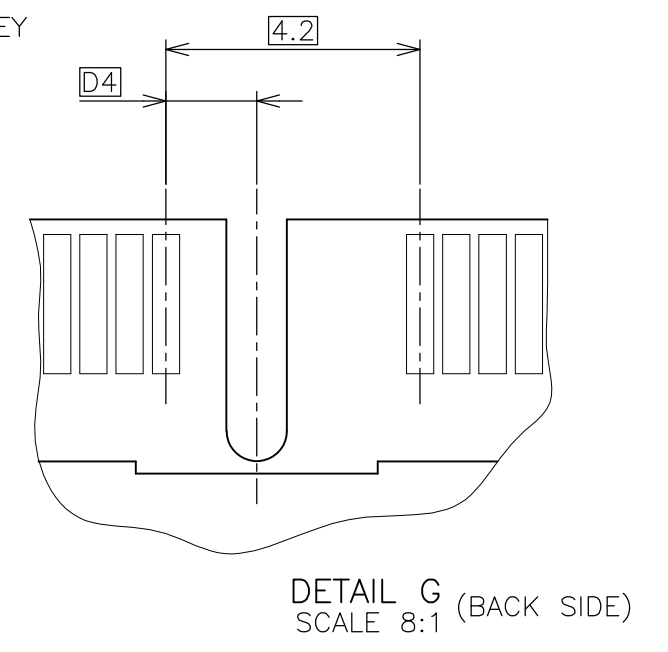
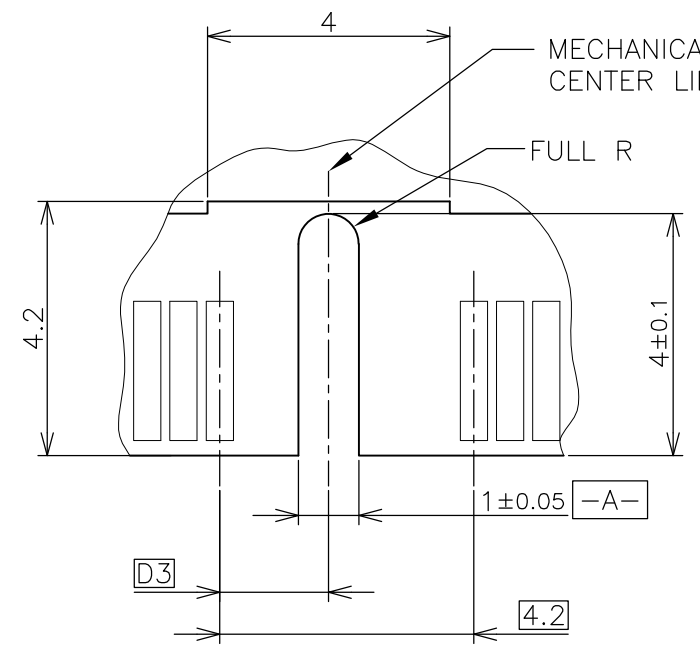
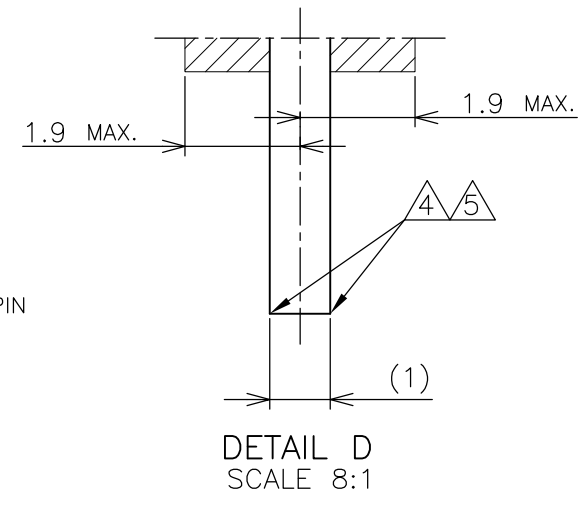
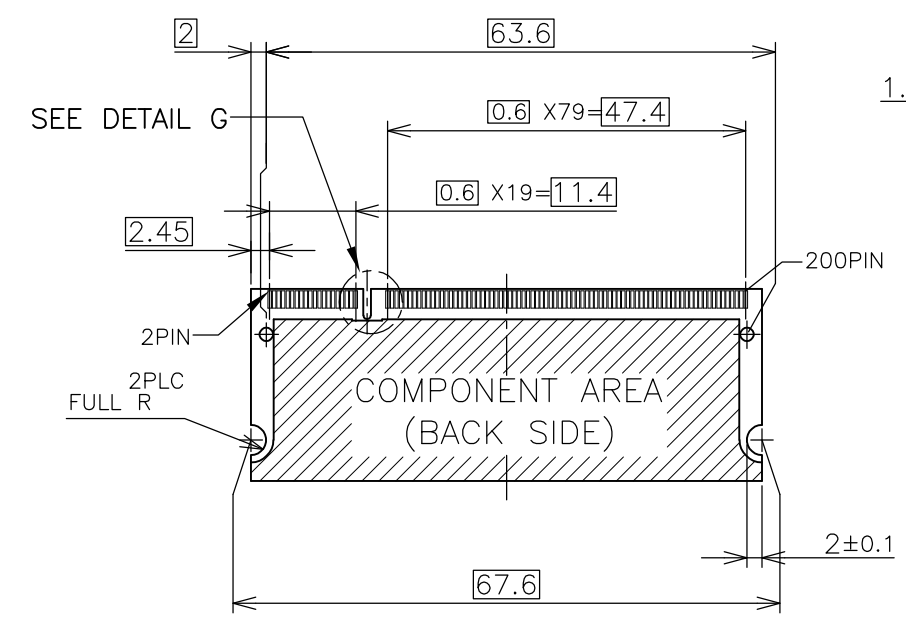
| | | | | | | |
|---|--|------------------|--|-----------|------------|---------------|
| THIS DRAWING IS A CONTROLLED DOCUMENT. | | DWN | Tyco Electronics AMP K.K. Kawasaki, Japan | | | |
| DIMENSIONS: MM | | CHK | | | | |
| TOLERANCES UNLESS OTHERWISE SPECIFIED: | | APVD | NAME | | | |
| 0 PLC ± 1 PLC ± 2 PLC ± 3 PLC ± 4 PLC ± ANGLES ± FINISH ± | | PRODUCT SPEC | DDR1 & DDR2 SODIMM SOCKET 0.6mm PITCH 200POS LOW PROFILE STANDARD TYPE (LATCH DIRECT SOLDERING TYPE) | | | |
| MATERIAL | | APPLICATION SPEC | SIZE | CAGE CODE | DRAWING NO | RESTRICTED TO |
| | | WEIGHT | A3 | 00779 | C-1827236 | |
| CUSTOMER DRAWING | | | SCALE | SHEET | OF | REV |
| | | | 2:1 | 2 | 4 | F |

THIS DRAWING IS UNPUBLISHED. RELEASED FOR PUBLICATION NOV. 2004.
 © COPYRIGHT 2004 BY TYCO ELECTRONICS CORPORATION. ALL RIGHTS RESERVED.

| LOC | DIST | REVISIONS | | | | | |
|-----|------|-----------|-----|-------------|------|-----|------|
| J | | P | LTR | DESCRIPTION | DATE | DWN | APVD |
| | | - | | SEE SHEET 1 | - | - | - |



- (APPLIED TO SHEET 3)
1. TOLERANCES ON ALL DIMENSIONS ±0.15 UNLESS OTHERWISE SPECIFIED.
 2. P.C.BOARD THICKNESS APPLIES ACROSS TABS AND INCLUDES PLATING AND/OR METALIZATION.
 3. FINISH OF PAD : GOLD PLATING 0.00076 MIN. OVER Ni PLATING 0.002MIN.
- △ NO BURR
- △ CHAMFER 0.25 MAX x 45° IF EXIST.



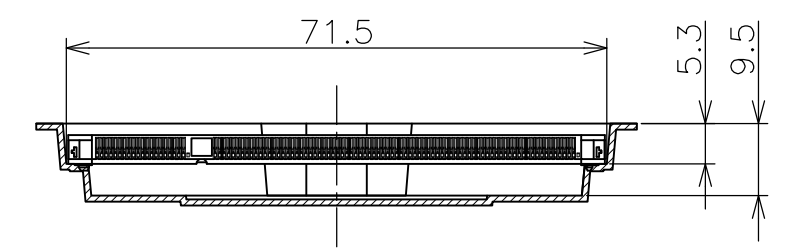
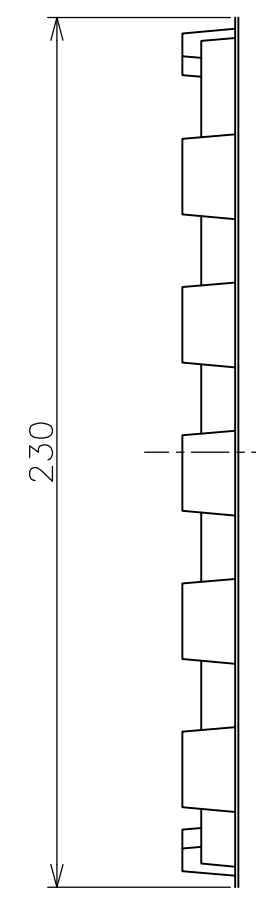
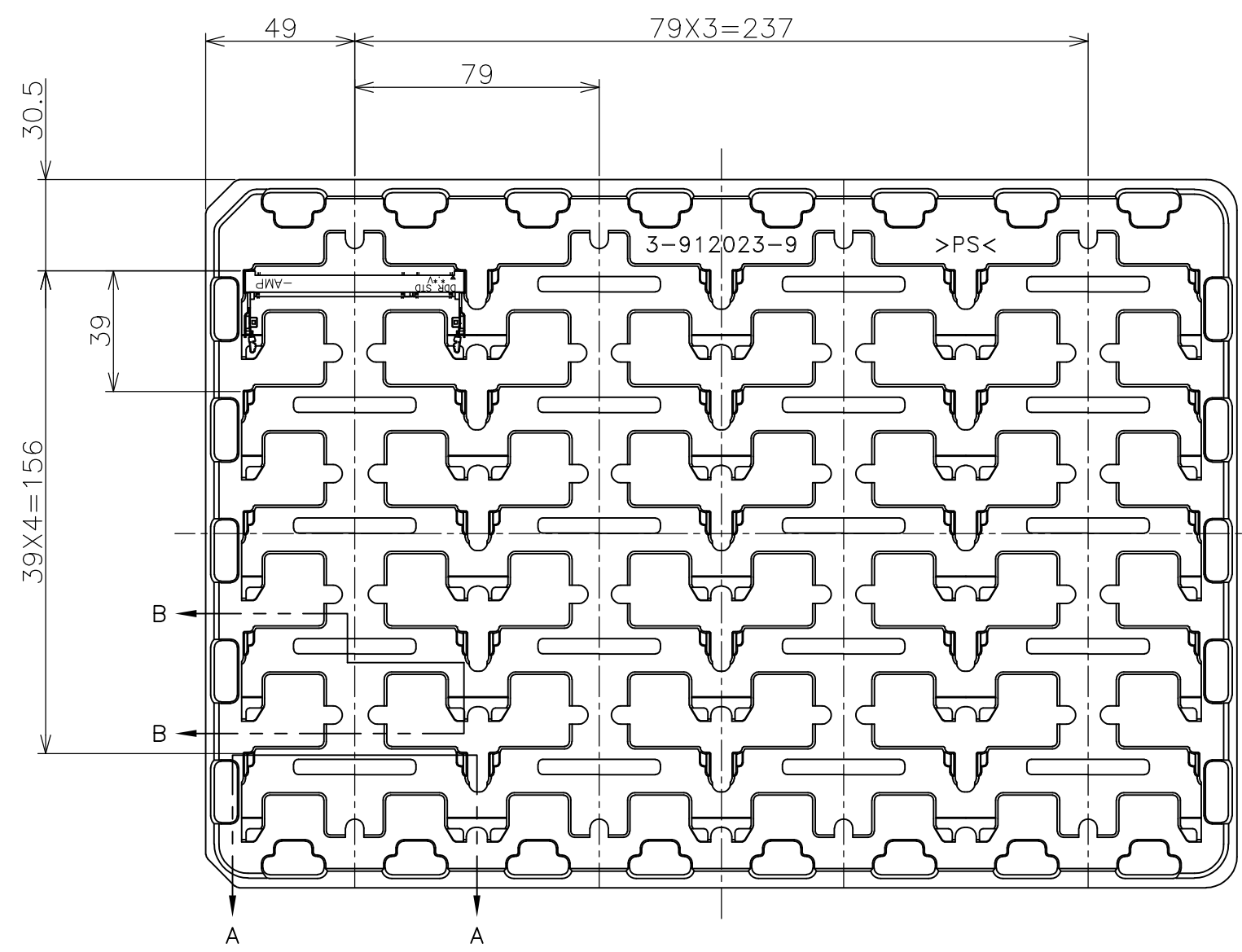
RECOMMENDED MATING P.C.B CONFIGURATION

| | | | | |
|-------|--------------|-------|-----|-----|
| 31.75 | 1.8V | 17.55 | 2.4 | 2.7 |
| 25.4 | 2.5V | 18.45 | 1.5 | 1.8 |
| H | POWER SUPPLY | D5 | D4 | D3 |

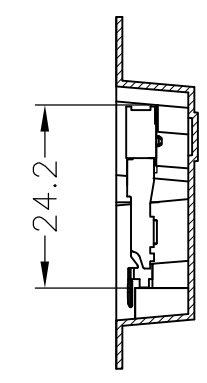
| | | | | | |
|--|--|------------------|--|-----------|------------|
| THIS DRAWING IS A CONTROLLED DOCUMENT. | | DWN | Tyco Electronics AMP K.K. Kawasaki, Japan | | |
| DIMENSIONS: MM | | CHK | | | |
| TOLERANCES UNLESS OTHERWISE SPECIFIED: | | APVD | NAME | | |
| 0 PLC ± | | PRODUCT SPEC | DDR1 & DDR2 SODIMM SOCKET 0.6mm PITCH | | |
| 1 PLC ± | | APPLICATION SPEC | 200POS LOW PROFILE STANDARD TYPE (LATCH DIRECT SOLDERING TYPE) | | |
| 2 PLC ± | | WEIGHT | SIZE | CAGE CODE | DRAWING NO |
| 3 PLC ± | | CUSTOMER DRAWING | A3 | 00779 | C-1827236 |
| 4 PLC ± | | | SCALE | SHEET | OF |
| ANGLES ± | | | 2:1 | 3 | 4 |
| FINISH | | | | | F |

THIS DRAWING IS UNPUBLISHED. RELEASED FOR PUBLICATION NOV. 2004.
 © COPYRIGHT 2004 BY TYCO ELECTRONICS CORPORATION. ALL RIGHTS RESERVED.

| LOC | DIST | REVISIONS | | | |
|-----|------|-------------|------|-----|------|
| P | LTR | DESCRIPTION | DATE | DWN | APVD |
| J | | SEE SHEET 1 | - | - | - |



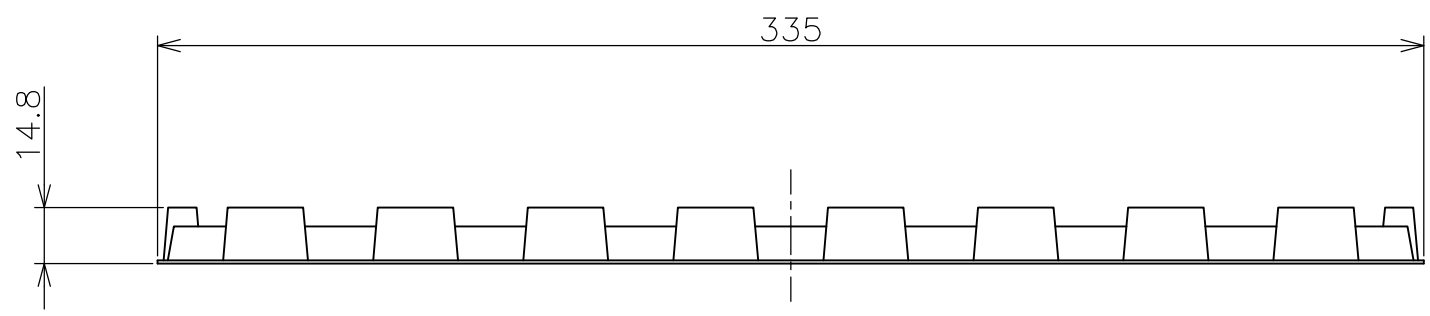
A-A
SCALE 1:1
(180DEG. ROTATE)



B-B
SCALE 1:1

1. THE DIRECTION OF EACH CONNECTOR ON A TRAY IS REFERRED TO THIS DRAWING.
2. GENERAL TOLERANCE : ±0.5

| | | |
|----------------|-----------|-------------|
| AVAILABLE | 20EA/TRAY | 1827236-6 |
| AVAILABLE | 20EA/TRAY | 3-1827236-4 |
| AVAILABLE | 20EA/TRAY | 2-1827236-4 |
| AVAILABLE | 20EA/TRAY | 1-1827236-4 |
| AVAILABLE | 20EA/TRAY | 1827236-4 |
| NOT AVAILABLE | 20EA/TRAY | - |
| TOOLING STATUS | QTY | P/N |



| | | | | | | |
|--|--|------------------|--|-----------|------------|---------------|
| THIS DRAWING IS A CONTROLLED DOCUMENT. | | DWN | Tyco Electronics AMP K.K. Kawasaki, Japan | | | |
| DIMENSIONS: MM | | CHK | | | | |
| TOLERANCES UNLESS OTHERWISE SPECIFIED: | | APVD | NAME | | | |
| 0 PLC ± | | PRODUCT SPEC | SEMI-HARD TRAY ASSY | | | |
| 1 PLC ± | | APPLICATION SPEC | DDR1 & DDR2 SODIMM SOCKET 200P LOW PROFILE | | | |
| 2 PLC ± | | WEIGHT | STANDARD TYPE (LATCH DIRECT SOLDERING TYPE) | | | |
| 3 PLC ± | | CUSTOMER DRAWING | SIZE | CAGE CODE | DRAWING NO | RESTRICTED TO |
| 4 PLC ± | | | A3 | 00779 | C-1827236 | |
| ANGLES ± | | SCALE | SHEET | OF | REV | |
| FINISH | | 1:2 | 4 | 4 | F | |