

4

3

2

1

THIS DRAWING IS UNPUBLISHED.

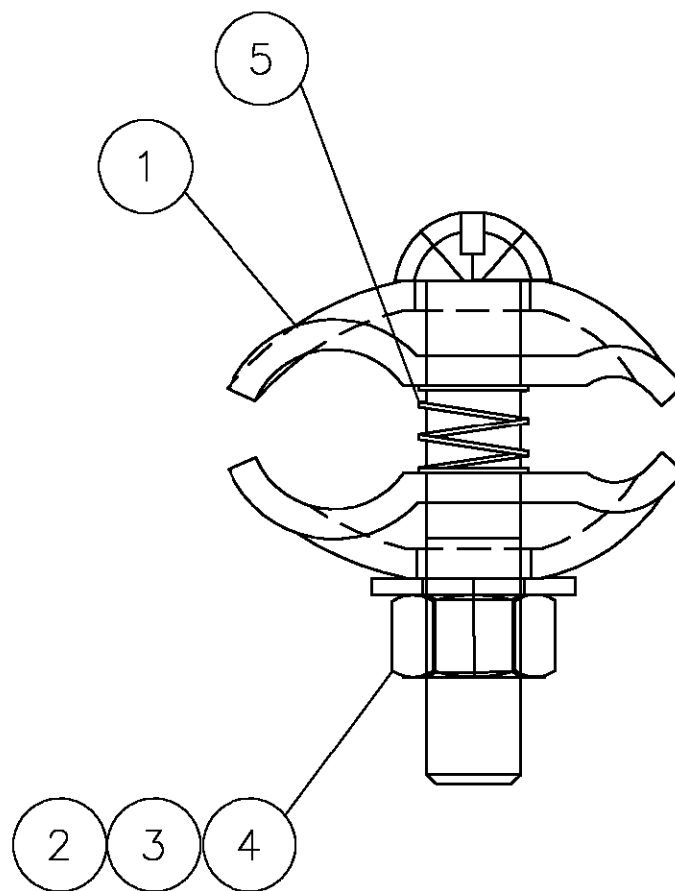
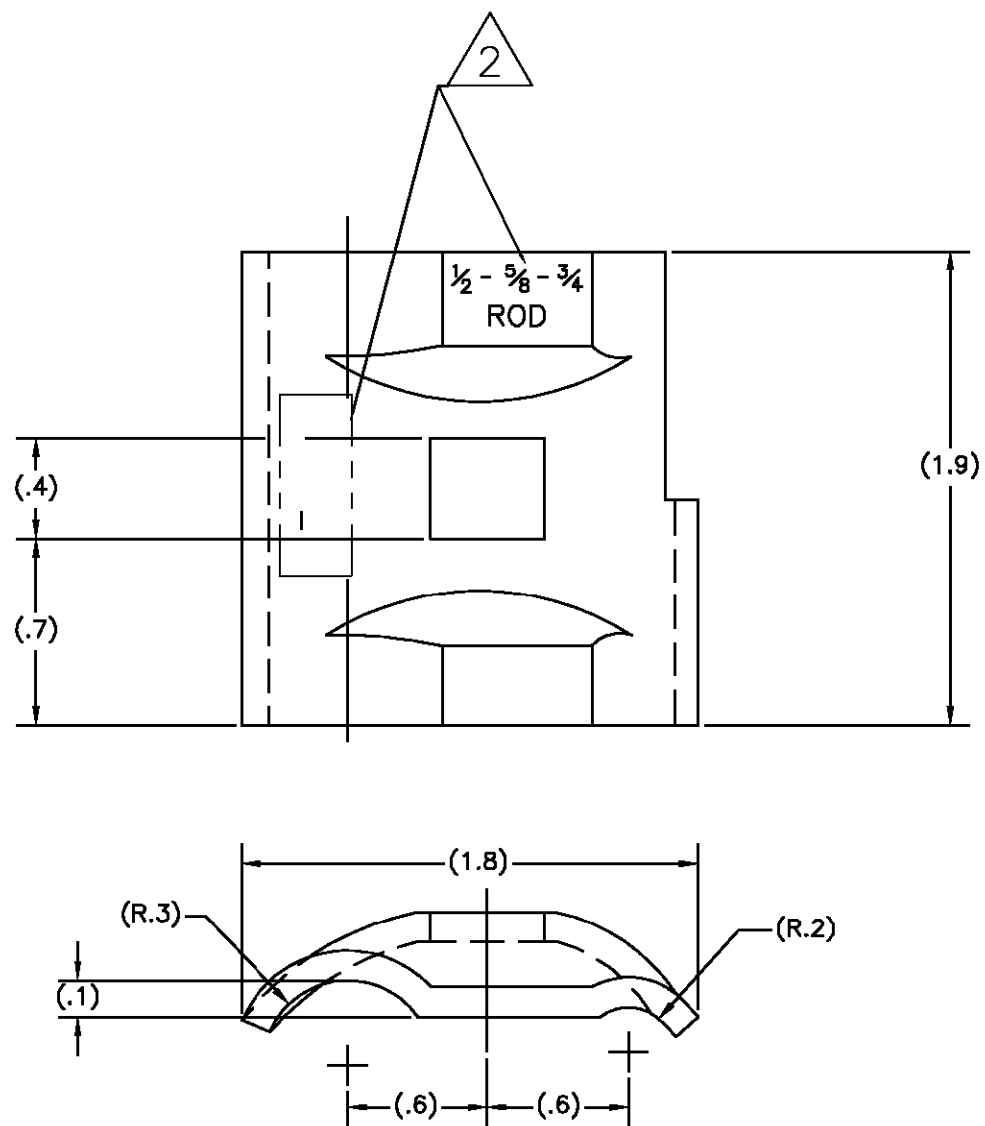
RELEASED FOR PUBLICATION

© COPYRIGHT BY TYCO ELECTRONICS CORPORATION. ALL RIGHTS RESERVED.

LOC GA DIST 1

REVISIONS

P	LTR	DESCRIPTION	DATE	DWN	APVD
	A	INITIAL REL. PER LC20-0029-07	29JAN07	DM	BJ



1. ACCOMODATES:
1/2" OR 5/8" OR 3/4" OD ROD TO
#8 - 1/0 AWG CONDUCTORS.

2 MARKING:
TYCO 81412
1/2-5/8-3/4 ROD
[D/C]

9665	81412-1
H.O. NO.	TYCO P/N

QTY	DESCRIPTION	ITEM NO.
1	SPRING, COMPRESSION, ZINC PLATED STEEL	5
1	NUT, 3/8", STAINLESS STEEL	4
1	WASHER, INTERNAL TOOTH LOCK, 3/8", STAINLESS STEEL	3
1	BOLT, 3/8" THREADED, STAINLESS STEEL	2
2	CLAMP, GROUND ROD, UTILIVERSAL, STAINLESS STEEL	1
-1	DESCRIPTION	ITEM NO.
PARTS LIST		

THIS DRAWING IS A CONTROLLED DOCUMENT.		DWN R JOHANNESSEN 29JAN2007	Tyco Electronics Corporation Markham, ON L3R-1E1													
DIMENSIONS: INCHES		CHK A. BULZA 29JAN2007														
TOLERANCES UNLESS OTHERWISE SPECIFIED:		APVD B. JOHNSON 29JAN2007	NAME CLAMP ASSEMBLY GROUND ROD, UTILIVERSAL													
<table border="1"> <tr><td>0 PLC</td><td>±</td></tr> <tr><td>1 PLC</td><td>±</td></tr> <tr><td>2 PLC</td><td>±</td></tr> <tr><td>3 PLC</td><td>±</td></tr> <tr><td>4 PLC</td><td>±</td></tr> <tr><td>ANGLES</td><td>±</td></tr> </table>		0 PLC	±	1 PLC	±	2 PLC	±	3 PLC	±	4 PLC	±	ANGLES	±	PRODUCT SPEC	SIZE A3 CAGE CODE 00779 DRAWING NO C=81412 RESTRICTED TO	
0 PLC	±															
1 PLC	±															
2 PLC	±															
3 PLC	±															
4 PLC	±															
ANGLES	±															
MATERIAL SEE BOM		FINISH NONE	WEIGHT -													
		CUSTOMER DRAWING		SCALE NTS SHEET 1 OF 1 REV A												