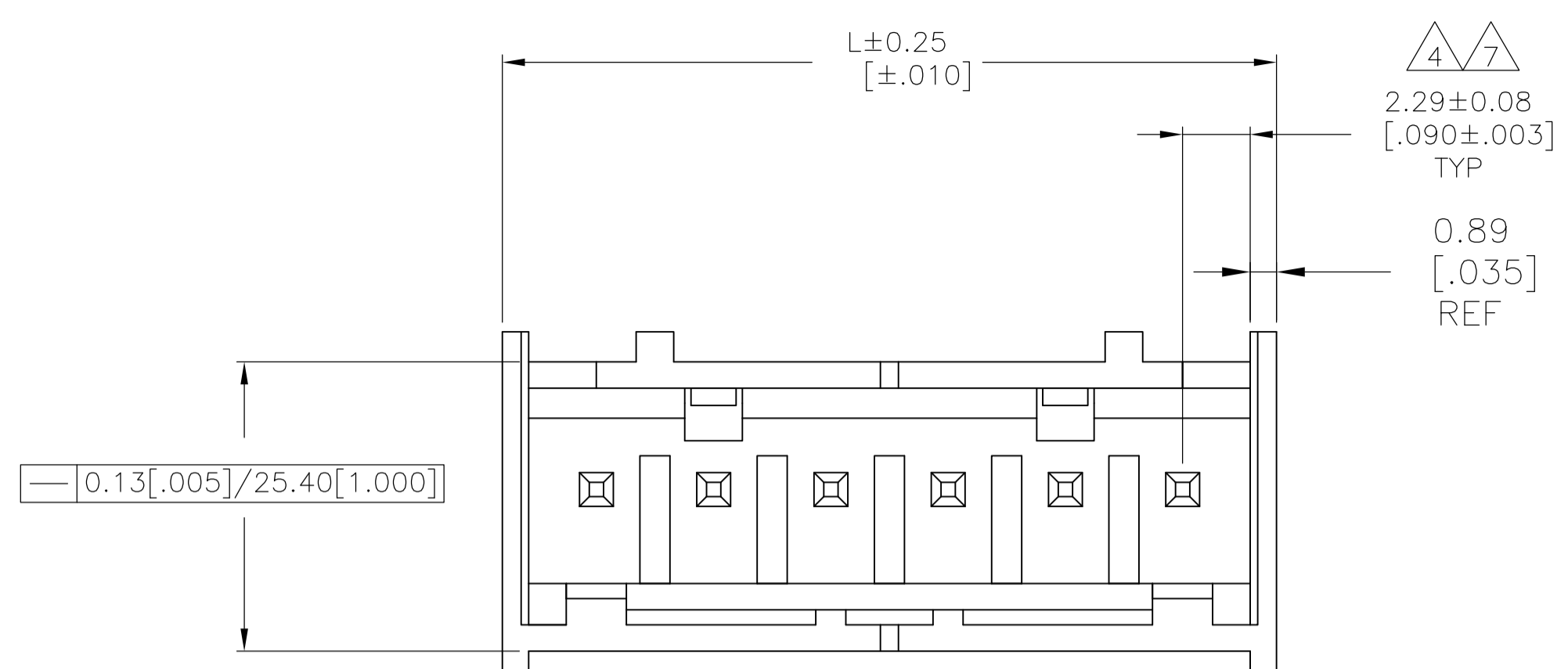
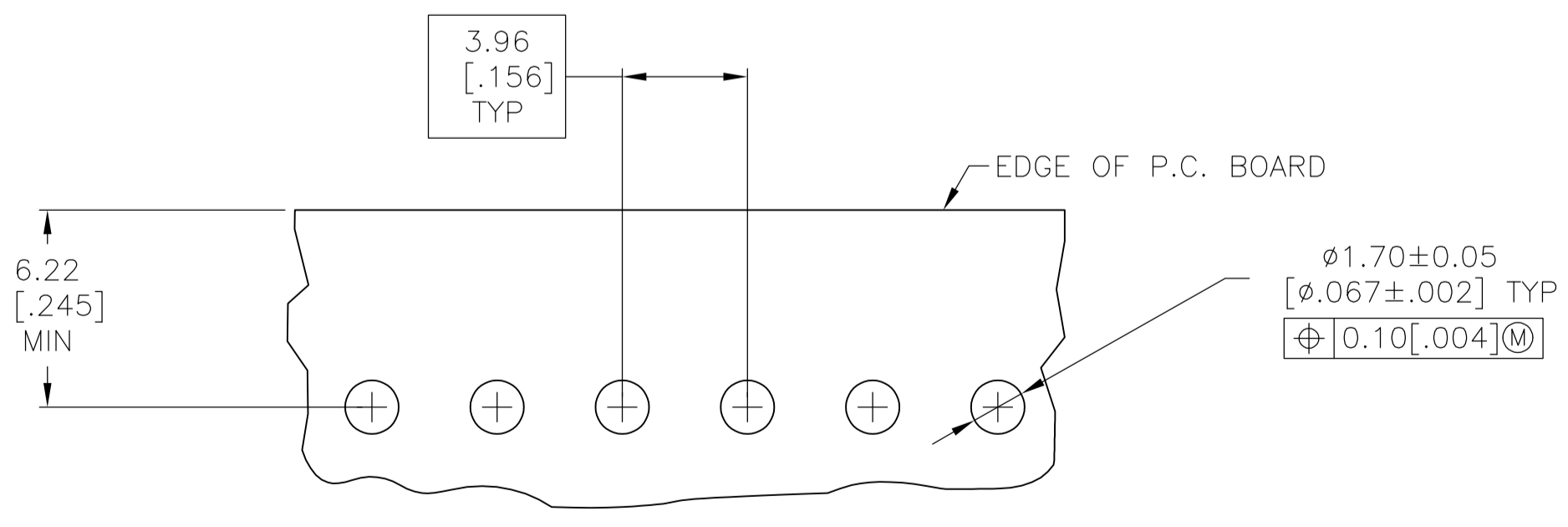
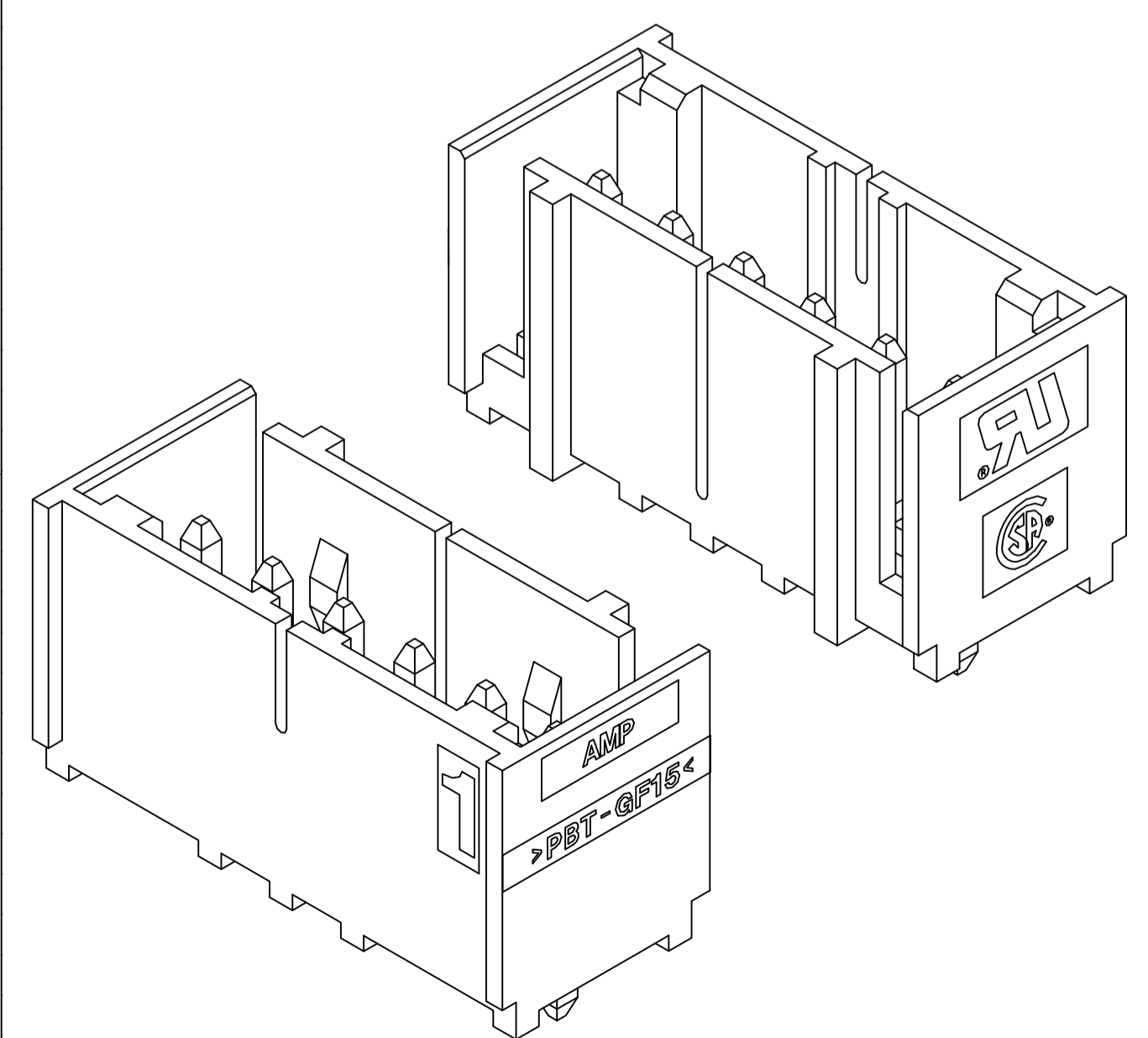
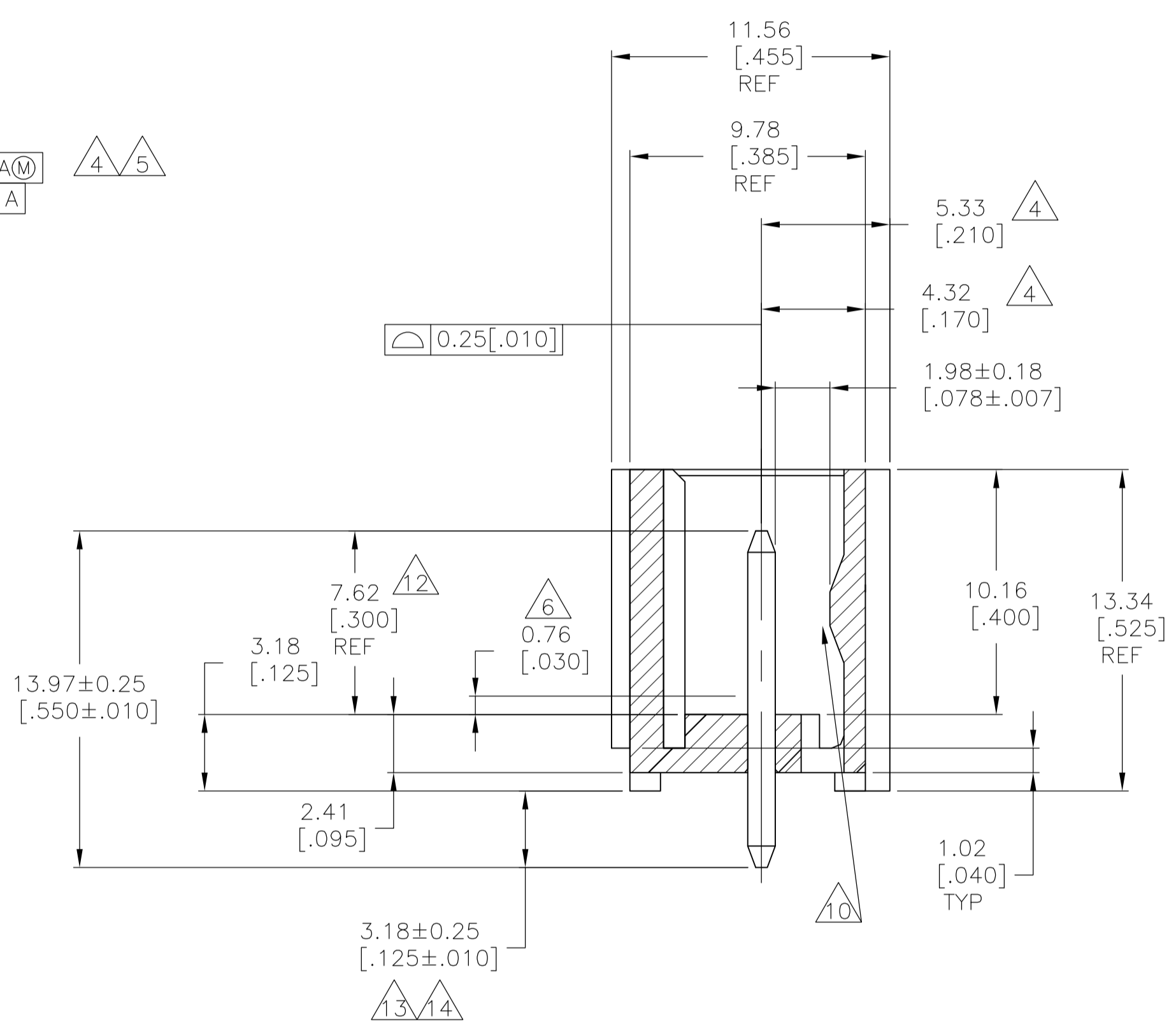
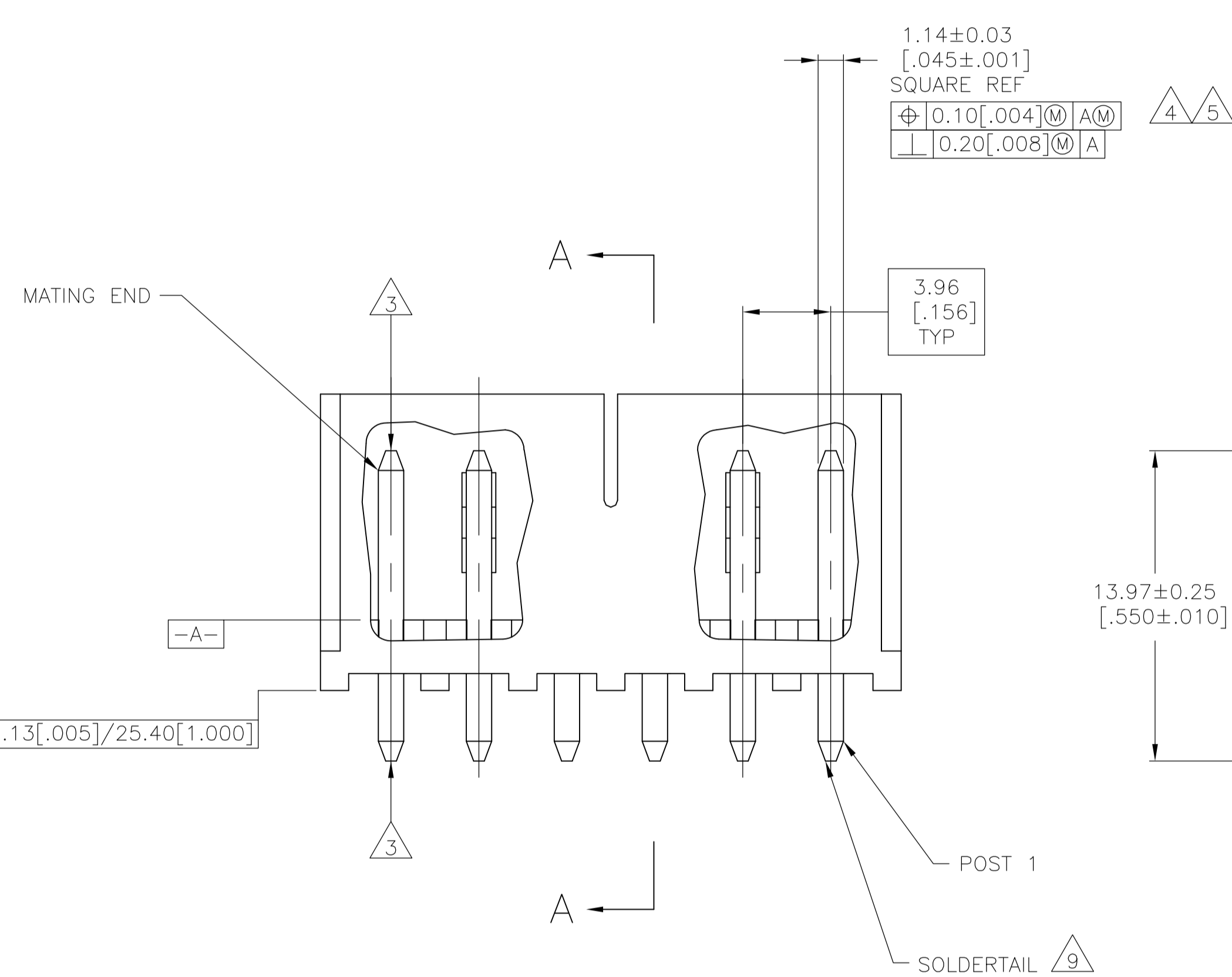


LOC		DIST		REVISIONS			
FT	0	REV	DATE	BY	CHKD	APPROV	
		D	EC 063B 1113 04	29 DEC 05	BSV	DB	
		D1	REVISED PER ECO-09-022908	60CT09	KK	AEG	



- 1 MATERIAL: HOUSING - THERMOPLASTIC POLYESTER, GLASS FILLED, UL94-0. POST - COPPER ALLOY.
- 2 FINISH: HOUSING - BLACK. POST - SEE NOTES 12, 13 AND 14 FOR PLATING.
- 3 POST TO WITHSTAND 3LBS (16N) MIN AXIAL FORCE IN THIS DIRECTION WITHOUT DISLODGING.
- 4 APPLIES AT -A-
- 5 APPLIES WHEN HEADER IS STRAIGHT.
- 6 PLASTIC PROJECTIONS PERMITTED IN THIS ZONE.
- 7 COORDINATE DIMENSIONS APPLIES FROM CENTER OF ACTUAL FEATURE.
- 8 SOLDER SIDE OF BOARD IS SHOWN.
- 9 POST SOLDERTAIL MUST COMPLY WITH AMP SOLDERABILITY SPEC 109-11-2.
- 10 LATCH DETENT FEATURE APPEARS 1 PLACE ON EACH END OF PART (MAX OF 2 PER PART) ON ALL POSITIONS 4 THRU 12. THE LATCH APPEARS ONLY ONE PLACE ON 2 & 3 POSITION PARTS.
- 11 DIMENSIONS IN BRACKETS ARE IN INCHES.
- 12 GOLD PLATE AREA, 0.00076 [.000030] MIN ALL SIDES; OVER NICKEL UNDERPLATE, 0.00127 [.000050] MIN ALL SIDES AND ENTIRE LENGTH OF POST.
- 13 BRIGHT TIN LEAD (93/7) PLATE AREA 0.00381 - 0.0089 [.000150 - .000350] ALL FOUR SIDES, 3.18 [.125] MIN..
- 14 MATTE TIN PLATE AREA 0.00381 - 0.0089 [.000150 - .000350] ALL FOUR SIDES, 3.18 [.125] MIN..
- 15 OBSOLETE PARTS: OBSOLETE CIS STREAMLINING PER D.RENAUD/D.SINISI



RECOMMENDED MOUNTING HOLE PATTERN FOR 1.57[.062] THICK P.C. BOARD

SECTION A-A

647131=6 SHOWN

PLATING	MM	IN	NO OF POSN	PART NUMBER
	49.94	1.966	12	3-647131-2
	45.97	1.810	11	3-647131-1
	42.01	1.654	10	3-647131-0
	38.05	1.498	9	2-647131-9
	34.09	1.342	8	2-647131-8
	30.12	1.186	7	2-647131-7
	26.16	1.030	6	2-647131-6
	22.20	.874	5	2-647131-5
	18.24	.718	4	2-647131-4
	14.27	.562	3	2-647131-3
	10.31	.406	2	2-647131-2
	49.94	1.966	12	1-647131-2
	45.97	1.810	11	1-647131-1
	42.01	1.654	10	1-647131-0
	38.05	1.498	9	1-647131-9
	34.09	1.342	8	1-647131-8
	30.12	1.186	7	1-647131-7
	26.16	1.030	6	1-647131-6
	22.20	.874	5	1-647131-5
	18.24	.718	4	1-647131-4
	14.27	.562	3	1-647131-3
	10.31	.406	2	1-647131-2

THIS DRAWING IS A CONTROLLED DOCUMENT. ESTE PLANO ES UN DOCUMENTO CONTROLADO.

DIN/DIBUJO	6-17-98	Tyco Electronics Corporation
D. LEWIS	6-17-98	Harrisburg, PA 17105-3608
CHK/CONTROL	6-17-98	
R. SWING	6-17-98	
APPRO/APROBADO	6-17-98	
D. CLARK		
NAME	MTA-156 SHROUDED HEADER	
NUMBRE	ASSEMBLY, STRAIGHT .045 SQUARE POST, .000030 GOLD, W/O RETENTION PEG	
PRODUCT SPEC		
ESPEC. DE PRODUCTO		
APPLICATION SPEC		
ESPEC. DE APLICACION		
MATERIAL		
FINISH		
ACABADO		
WEIGHT		
PESO		
CUSTOMER DRAWING/PLANO DE CLIENTE	SCALE 5:1	SHEET 1 OF 1