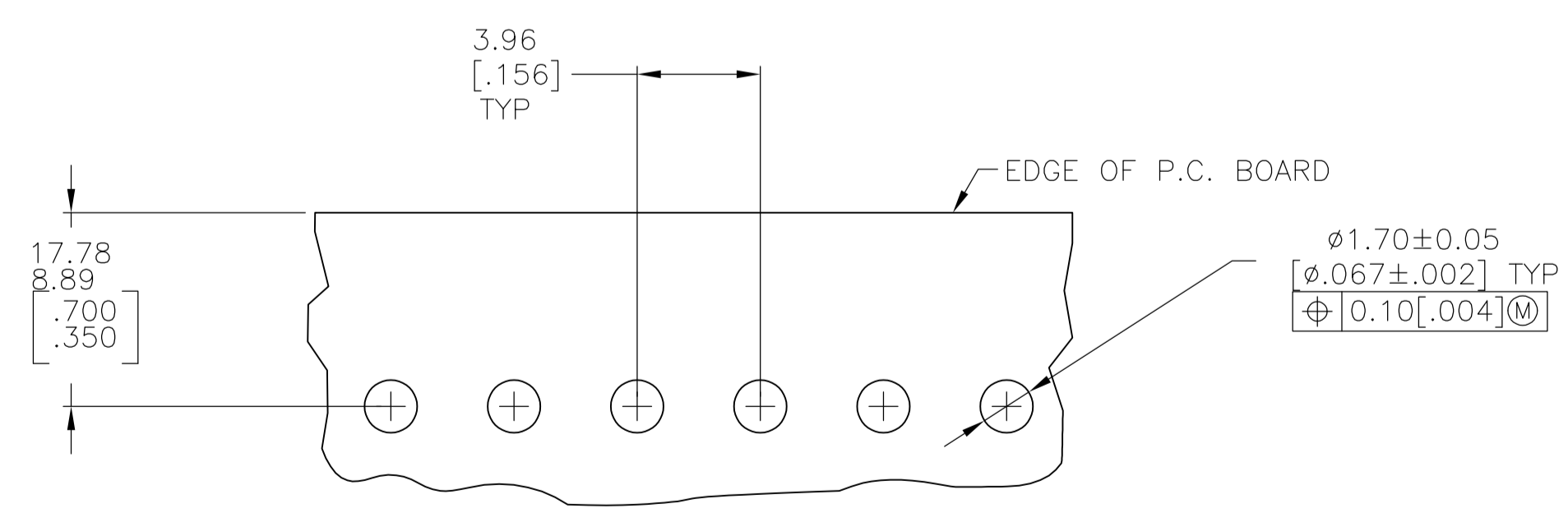
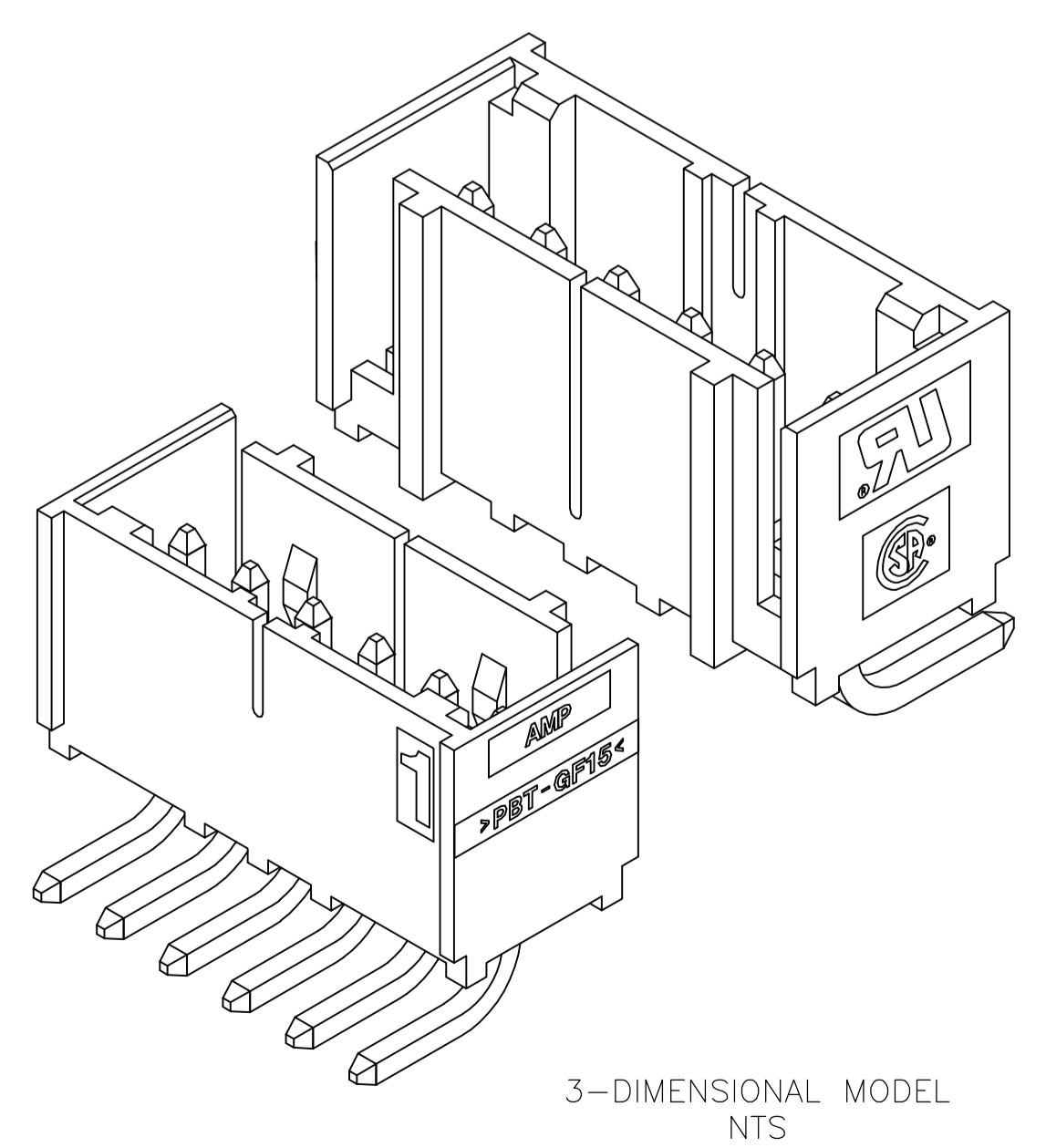
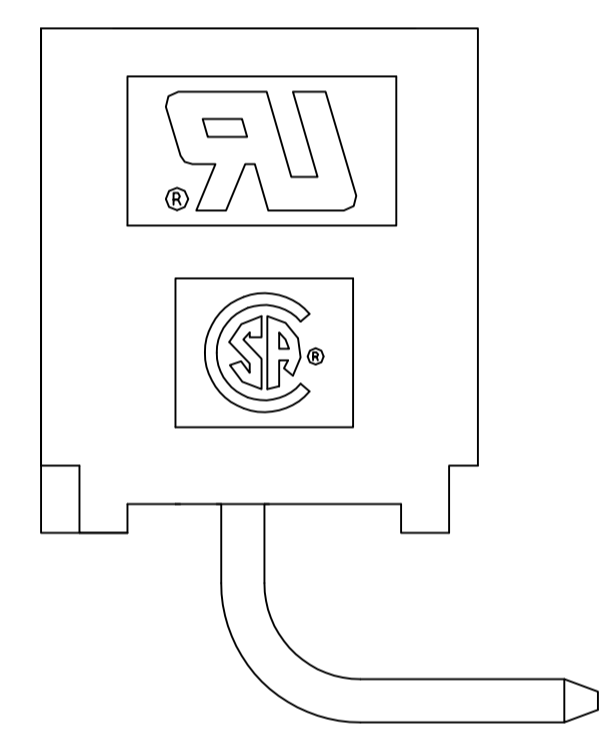
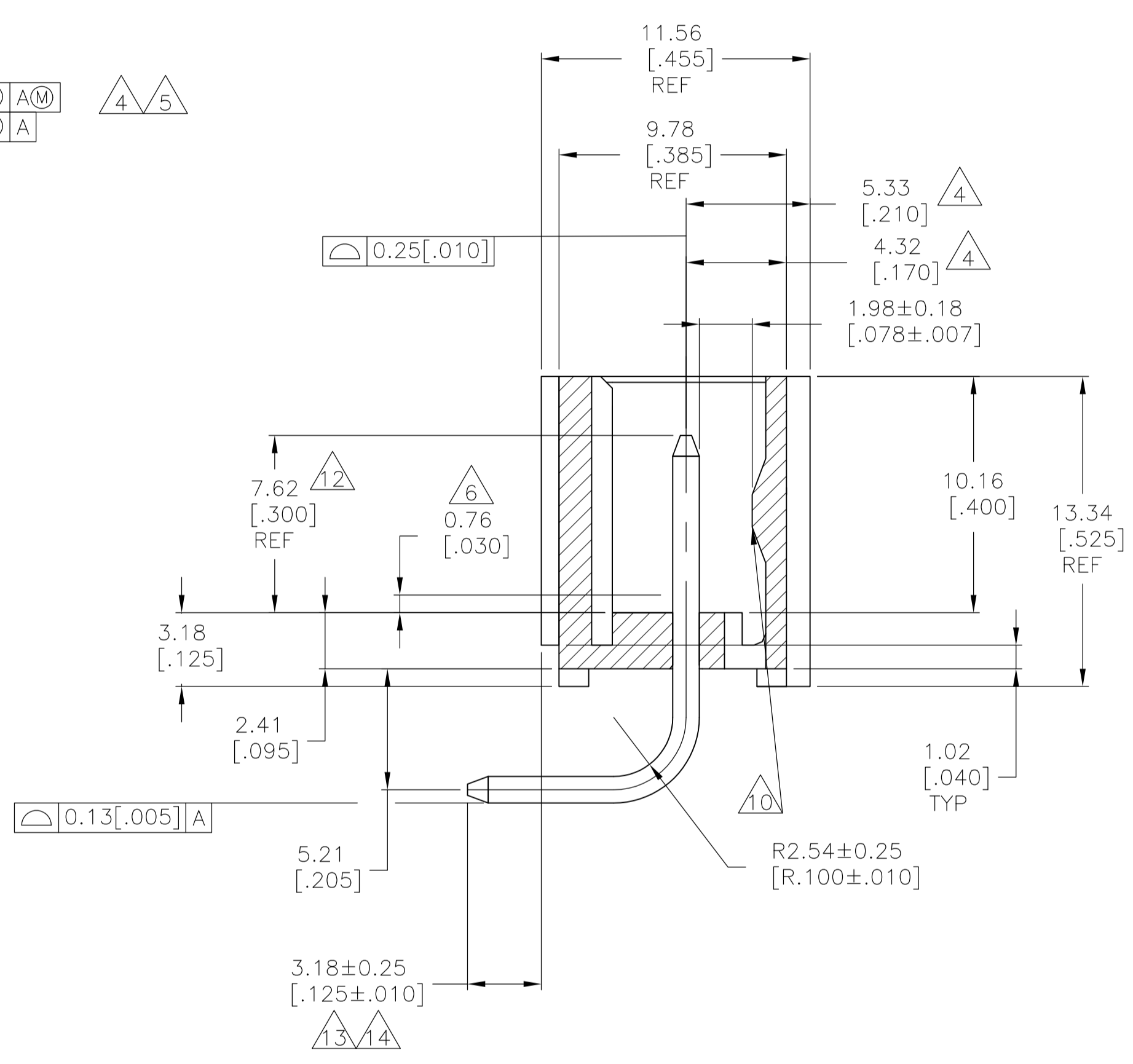
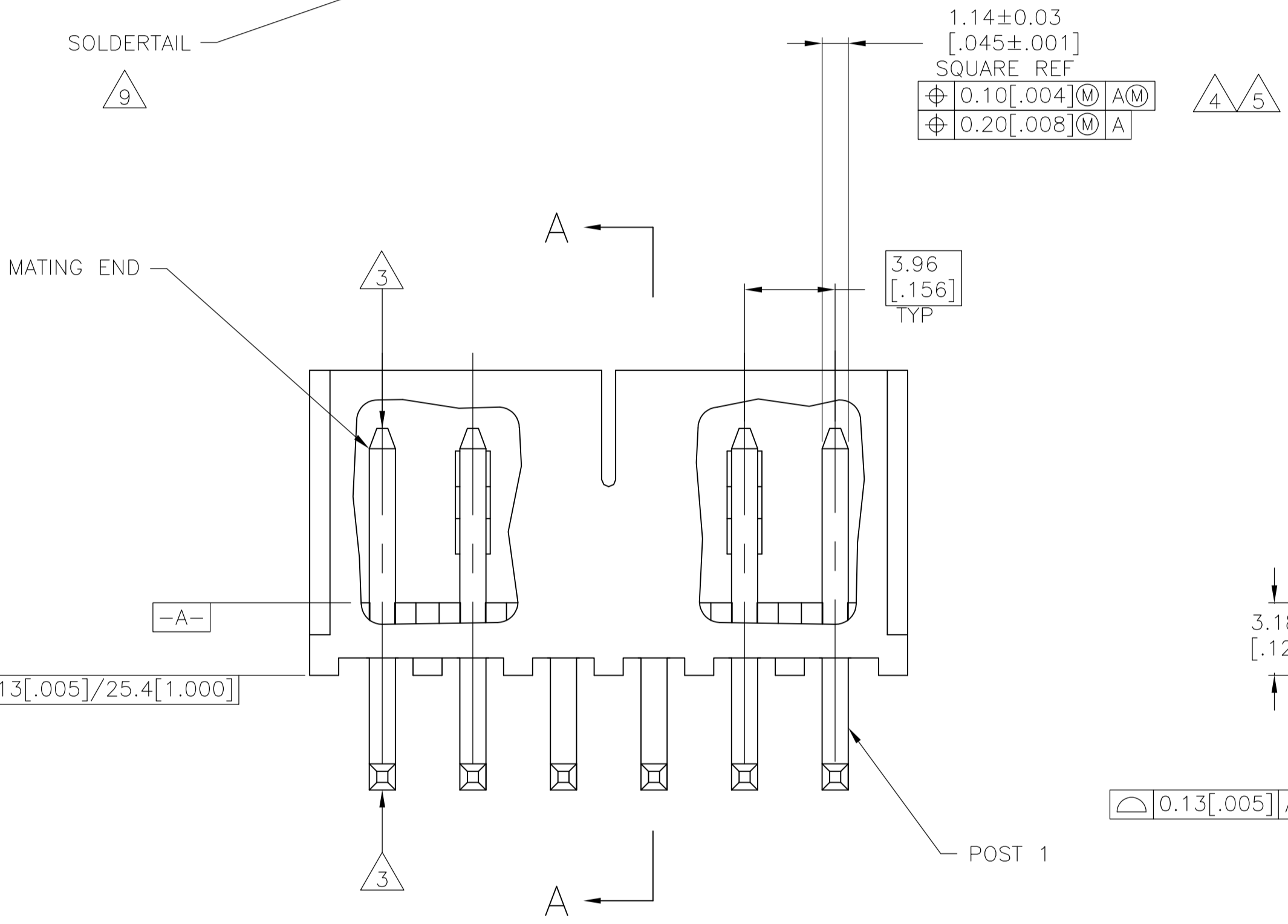
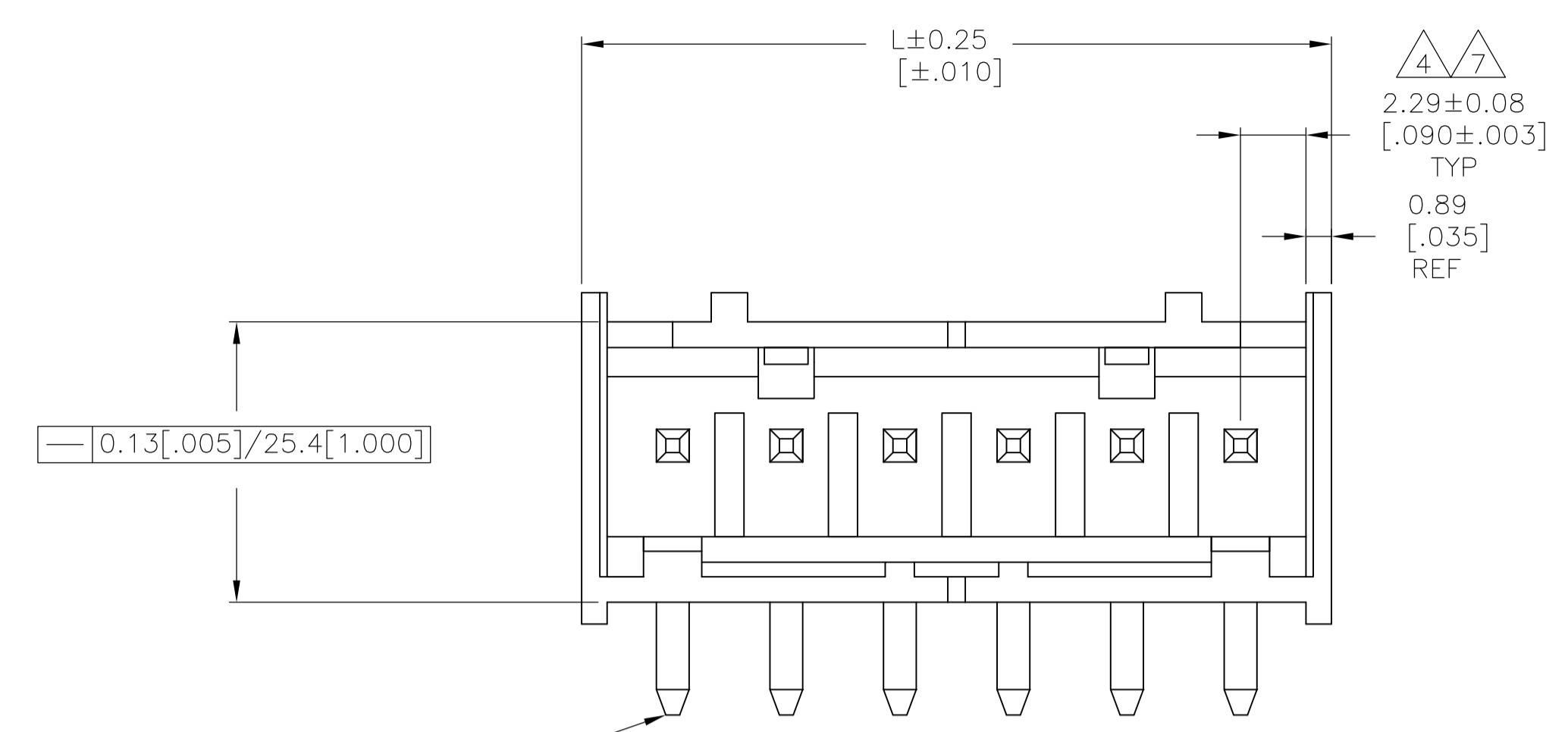


LOC	DIST	REVISIONS				
CM	0	REV	DESCRIPTION	DATE	BY	APPV
		D	EC 003B 1113 04	29 DEC 05	BSV	DB
		D1	REVISED PER ECO-09-022908	06OCT09	KK	AEG



- 1 MATERIAL: HOUSING - THERMOPLASTIC POLYESTER, GLASS FILLED, UL94-0. POST - COPPER ALLOY
- 2 FINISH: HOUSING - BLACK POST - SEE NOTES 12, 13 AND 14 FOR PLATING.
- 3 POST TO WITHSTAND 3LBS (16N) MIN AXIAL FORCE IN THIS DIRECTION WITHOUT DISLODGING.
- 4 APPLIES AT -A-
- 5 APPLIES WHEN HEADER IS STRAIGHT.
- 6 PLASTIC PROJECTIONS PERMITTED IN THIS ZONE.
- 7 COORDINATE DIMENSIONS APPLIES FROM CENTER OF ACTUAL FEATURE.
- 8 SOLDER SIDE OF BOARD IS SHOWN.
- 9 POST SOLDERTAIL MUST COMPLY WITH AMP SOLDERABILITY SPEC 109-11-2.
- 10 LATCH DETENT FEATURE APPEARS 1 PLACE ON EACH END OF PART (MAX OF 2 PER PART) ON ALL POSITIONS 4 THRU 12. THE LATCH APPEARS ONLY ONE PLACE ON 2 & 3 POSITION PARTS.
- 11 DIMENSIONS IN BRACKETS ARE IN INCHES.
- 12 GOLD PLATE AREA, 0.00076 [.000030] MIN ALL SIDES; OVER NICKEL UNDERPLATE, 0.00127 [.000050] MIN ALL SIDES AND ENTIRE LENGTH OF POST.
- 13 BRIGHT TIN LEAD (93/7) PLATE AREA 0.00381 - 0.0089 [.000150 - .000350] ALL FOUR SIDES, 3.18 [.125] MIN..
- 14 MATTE TIN PLATE AREA 0.00381 - 0.0089 [.000150 - .000350] ALL FOUR SIDES, 3.18 [.125] MIN..
- 15 OBSOLETE PARTS: OBSOLETE CIS STREAMLINING PER D.RENAUD/D.SINISI

15-647133-6 SHOWN

15 SUPERSEDED

49.94	1.966	12	3-647133-2
45.97	1.810	11	3-647133-1
42.01	1.654	10	3-647133-0
38.05	1.498	9	2-647133-9
34.09	1.342	8	2-647133-8
30.12	1.186	7	2-647133-7
26.16	1.030	6	2-647133-6
22.20	.874	5	2-647133-5
18.24	.718	4	2-647133-4
14.27	.562	3	2-647133-3
10.31	.406	2	2-647133-2
49.94	1.966	12	1-647133-2
45.97	1.810	11	1-647133-1
42.01	1.654	10	1-647133-0
38.05	1.498	9	647133-9
34.09	1.342	8	647133-8
30.12	1.186	7	647133-7
26.16	1.030	6	647133-6
22.20	.874	5	647133-5
18.24	.718	4	647133-4
14.27	.562	3	647133-3
10.31	.406	2	647133-2

PLATING	MM	IN	NO OF POSN	PART NUMBER

THIS DRAWING IS A CONTROLLED DOCUMENT.

DIMENSIONS: mm [INCHES]	TOLERANCES UNLESS OTHERWISE SPECIFIED:	DIN B LEWIS 6-17-98	6-17-98	Tyco Electronics Corporation Harrisburg, PA 17105-3608
0 PLC ± -	1 PLC ± -	2 PLC ± -	3 PLC ± .005	4 PLC ± -
ANGLES ± -				
MATERIAL	FINISH	APPROV D. CLARK 6-17-98	NAME	MTA-156 SHROUDED HEADER ASSEMBLY, RIGHT ANGLE FRONT BEND .045 SQUARE POST, .000030 GOLD, W/O RETENTION PEG
		SIZE	CAGE CODE	DRAWING NO
		WEIGHT	A1	00779
		CUSTOMER DRAWING	SCALE	5:1
		SHEET	1	OF 1
		REV		D1

