

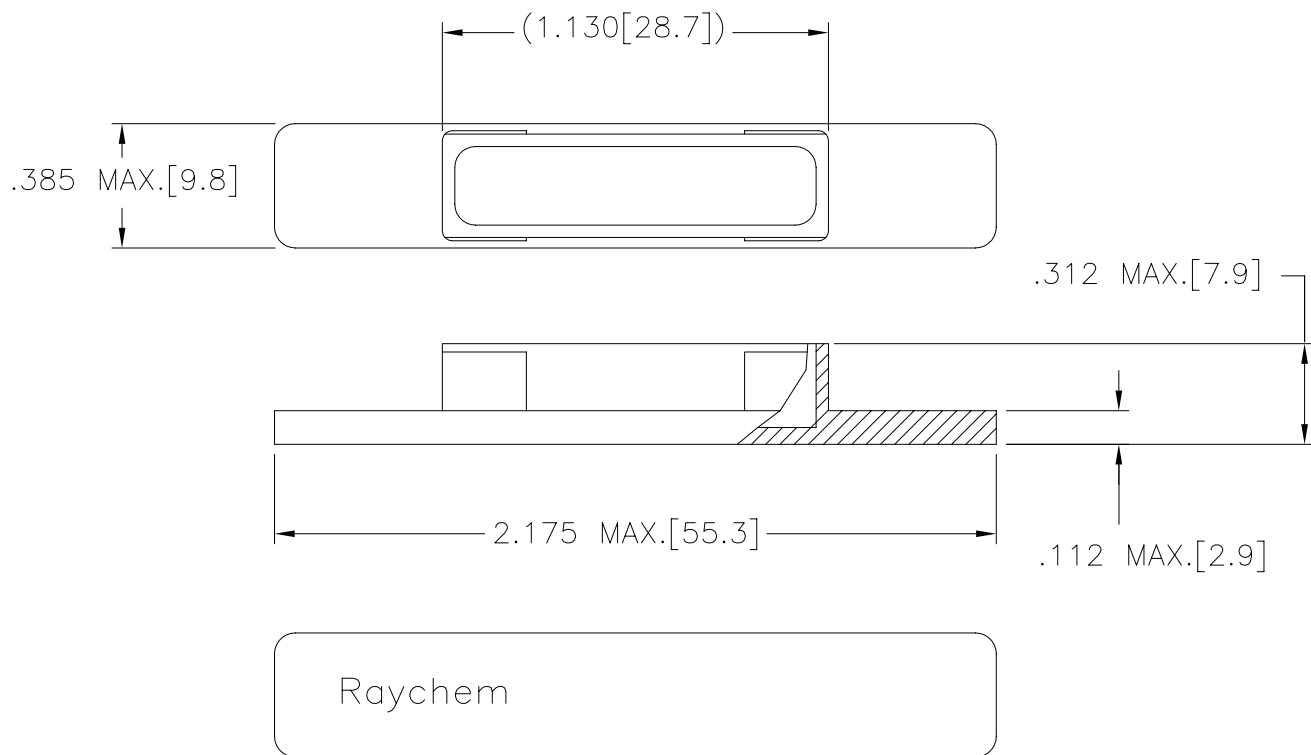
2

1

TYCO ELECTRONICS RESERVES THE RIGHT TO AMEND THIS DRAWING AT ANY TIME. USERS SHOULD EVALUATE THE SUITABILITY OF THE PRODUCT FOR THEIR APPLICATION.

REVISIONS

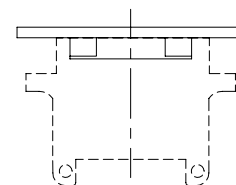
LTR	DESCRIPTION	DATE	APPROVED
A	INITIAL RELEASE PER DCR# C060241	May/8/06	M.HIGGY



NOTES:

- THIS PART IS USED WITH MTC50, MTCQ, MTCTQ AND MTCST 1 INCH RECEPTACLE CONNECTORS.
- MATERIAL: POLYETHYLENE LOW DENSITY
REXENE 2049
COLOR: RED
- WEIGHT: 0.003 Lbs. [1.32 gm.] MAXIMUM.

VIEW SHOWING TYPICAL INSTALLATION



RECEPTACLE CONNECTOR

If this document is printed it becomes uncontrolled. Check for the latest revision

SPECIFICATION CONTROL DRAWING

©2006 Tyco Electronics Corporation. All rights reserved.

UNLESS OTHERWISE SPECIFIED
DIMENSIONS ARE IN INCHES.
METRIC DIMENSIONS ARE
IN BRACKETS.

DECIMALS

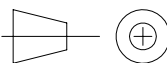
.XXX ± 0.005 [0.13 mm]
.XX ± 0.01 [0.25 mm]
.X ± 0.1 [0.50 mm]

ANGLES

.X ± 0.5 DEG

DRAWN	ZSOFIA.ORBAN	5MAY2006
CHECKED		
APPROVED	M.HIGGY	5MAY2006
REVISED		
CAD NAME: C060241.DWG		

THIRD ANGLE
PROJECTION



tyco
Electronics

Tyco Electronics Corporation
300 Constitution Drive
Menlo Park, CA. 94025 U.S.A.

Raychem

TITLE
DUST CAP, 1 INCH RECEPTACLE
MTC50, MTCQ, MTCTQ AND MTCST
POLYETHYLENE-COLOR RED

SIZE A	CODE IDENT. NO. 06090	DWG. NO. CHA-1600	REV: A
-----------	--------------------------	-----------------------------	------------------

DO NOT SCALE THIS DRAWING

SHEET 1 OF 1