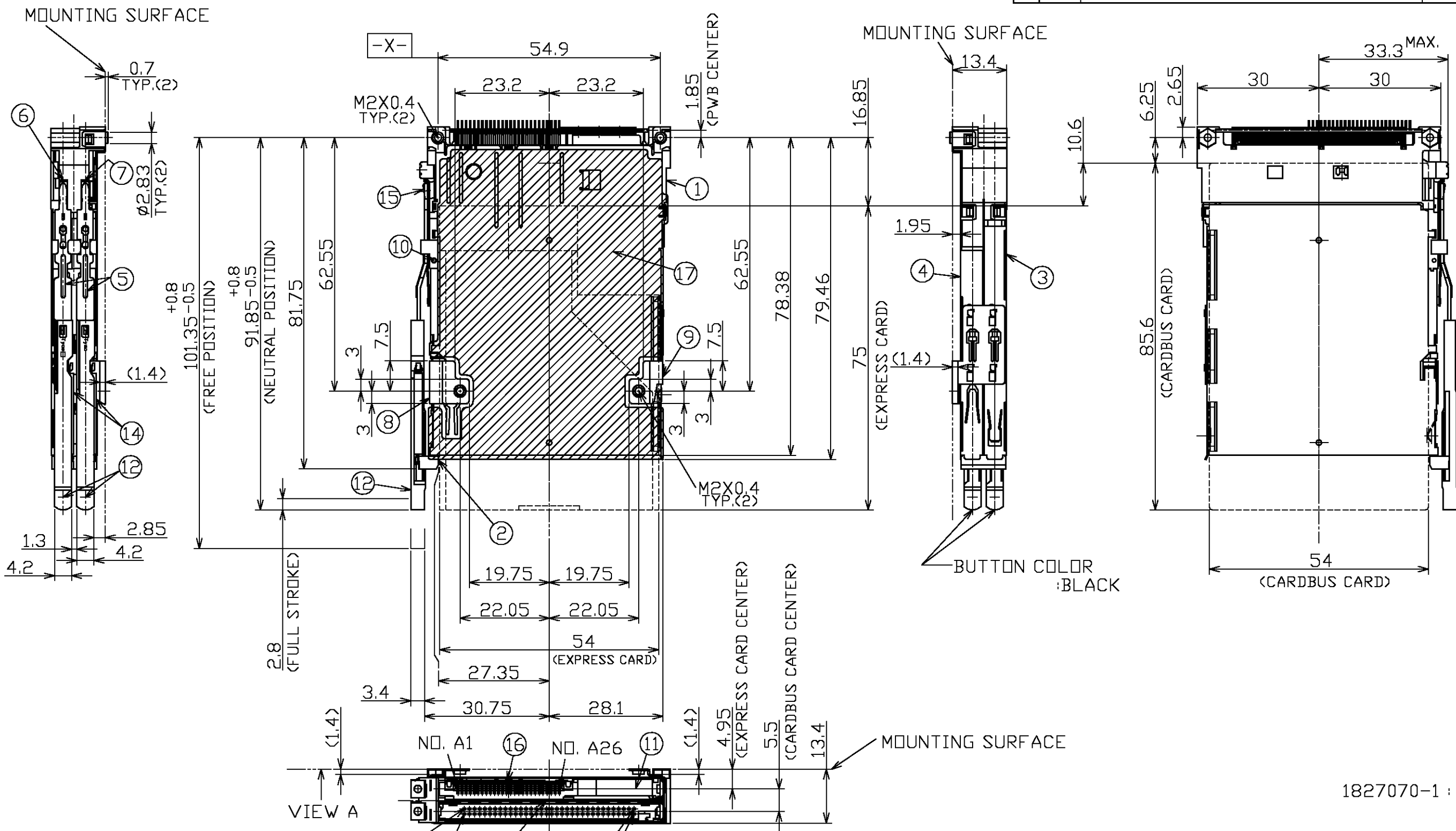


THIS DRAWING IS UNPUBLISHED. RELEASED FOR PUBLICATION
 © COPYRIGHT BY TYCO ELECTRONICS CORPORATION. ALL RIGHTS RESERVED.

LOC	DIST	REVISIONS					
J		P	LTR	DESCRIPTION	DATE	DWN	APVD
		A		RELEASED	06JUL05	Y.W	Y.Y

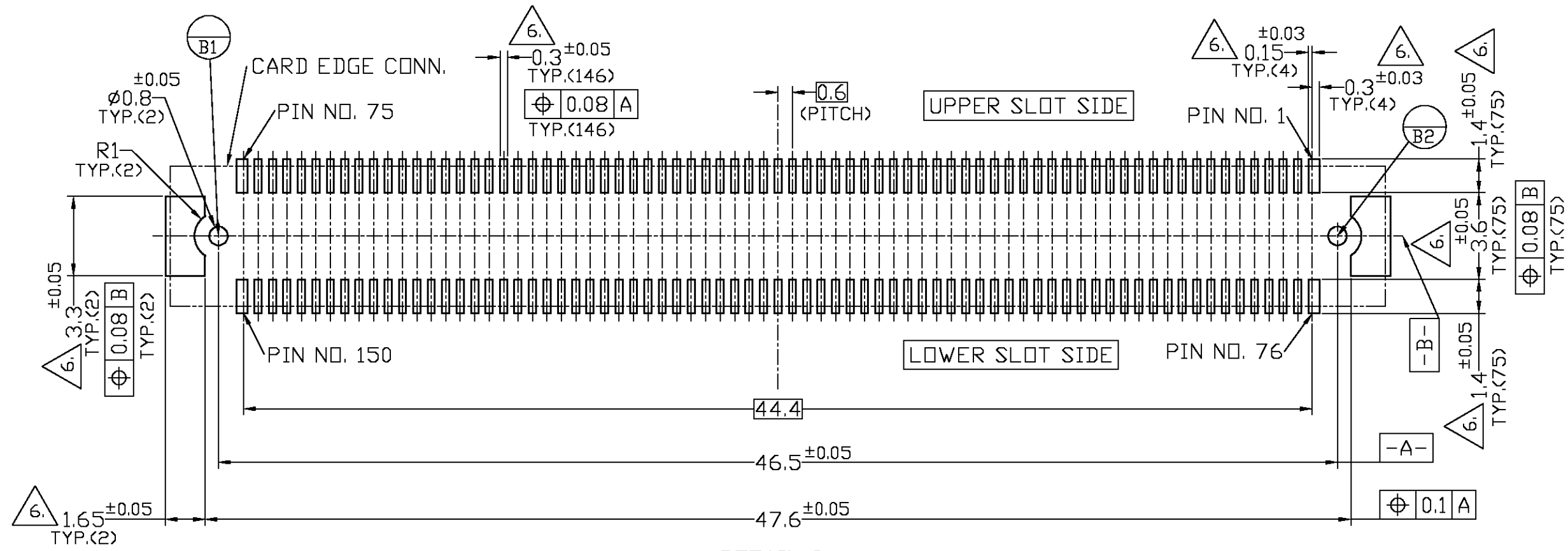


1827070-1 : AS SHOWN

THIS DRAWING IS A CONTROLLED DOCUMENT.		DWN	Y.WATANABE	27JUN05		Tyco Electronics AMP K.K.	
		CHK	K.YAMAGUCHI	06JUL05		Kawasaki, Japan	
		APVD	Y.YAMAMOTO	06JUL05	NAME	EXPRESS - CARDBUS COMBO SLOT	
		PRODUCT SPEC			BOTTOM MOUNT TYPE		
		APPLICATION SPEC			PUSH-PUSH LEFT BUTTON		
		WEIGHT	46.35g	SIZE	A3	CAGE CODE	00779
		CUSTOMER DRAWING		DRAWING NO	C=1827070		RESTRICTED TO
				SCALE	1:1	SHEET	1 OF 5
						REV	A

THIS DRAWING IS UNPUBLISHED. RELEASED FOR PUBLICATION
 © COPYRIGHT BY TYCO ELECTRONICS CORPORATION. ALL RIGHTS RESERVED.

LOC	DIST	REVISIONS			DATE	DWN	APVD
J	/	P	LTR	DESCRIPTION			
		-	-		-	-	-



DETAIL B
SCALE 5:1

0.6mm PITCH CARD EDGE CONNECTOR FOR THIS PRODUCT		
6123215-1	1123215-1	HARD TRAY
6376045-1	1376045-1	ON TAPING(EMBOSS)
LEAD-FREE	LEAD TYPE	DESCRIPTION
PART NUMBER		

THIS DRAWING IS A CONTROLLED DOCUMENT.

DIMENSIONS: 単位: 耗 mm	TOLERANCES UNLESS OTHERWISE SPECIFIED: 一般公差
	0 PLC ± -
	1 PLC ± -
	2 PLC ± -
	3 PLC ± -
	4 PLC ± -
	ANGLES ± -
MATERIAL 材料	FINISH 仕上

DWN	CHK	APVD	PRODUCT SPEC	APPLICATION SPEC	WEIGHT	Tyco Electronics AMP K.K. Kawasaki, Japan		NAME 名称	EXPRESS - CARDBUS COMBO SLOT BOTTOM MOUNT TYPE PUSH-PUSH LEFT BUTTON	RESTRICTED TO
			製品規格	取付適用規格		SIZE	CAGE CODE	DRAWING NO		
						A3	00779	C-1827070		

CUSTOMER DRAWING SCALE 1:1 SHEET 3 OF 5 REV A

THIS DRAWING IS UNPUBLISHED. RELEASED FOR PUBLICATION
 © COPYRIGHT BY TYCO ELECTRONICS CORPORATION. ALL RIGHTS RESERVED.

LOC	DIST	REVISIONS 変更					
J	/	P	LTR	DESCRIPTION	DATE	DWN	APVD
		-	-		-	-	-

FINISH	MATERIAL	QTY	NAME	ITEM
	POLYESTER	1	INSULATION SHEET	⑰
	STAINLESS STEEL	1	EXPRESS EJECT PLATE	⑯
	STAINLESS STEEL	1	EXPRESS ARM BAR	⑮
	STEEL	2	PUSH PLATE SPRING	⑭
	STAINLESS STEEL	1	MIDDLE SHELL	⑬
	THERMO PLASTIC	2	BUTTON (COLOR:BLACK)	⑫
	THERMO PLASTIC	1	EXPRESS GUIDE RAIL	⑪
	STAINLESS STEEL	1	SPRING PIN	⑩
	STAINLESS STEEL	1	BRACKET(W/O BUTTON SIDE)	⑨
	STAINLESS STEEL	1	BRACKET(BUTTON SIDE)	⑧
	STAINLESS STEEL & COPPER ARROY	1	EXPRESS PUSH PLATE ASSY(L)	⑦
	STAINLESS STEEL & COPPER ARROY	1	CARDBUS PUSH PLATE ASSY(L)	⑥
	STAINLESS STEEL	2	PUSH BAR	⑤
	STAINLESS STEEL	1	UPPER SHELL	④
	STAINLESS STEEL	1	LOWER SHELL	③
	THERMO PLASTIC	1	HOUSING ARM	②
NICKEL & TIN & GOLD	HIGH TEMPERATURE THERMO PLASTIC & COPPER ARROY & STAINLESS STEEL & GRASS-EPOX	1	HEADER MAIN ASSY	①

THIS DRAWING IS A CONTROLLED DOCUMENT.		DWN	Tyco Electronics AMP K.K. Kawasaki, Japan		
DIMENSIONS: 単位: 耗 mm 		CHK	NAME 名称		
TOLERANCES UNLESS OTHERWISE SPECIFIED: 一般公差 0 PLC ± - 1 PLC ± - 2 PLC ± - 3 PLC ± - 4 PLC ± - ANGLES ± - FINISH 仕上		APVD	EXPRESS - CARDBUS COMBO SLOT BOTTOM MOUNT TYPE PUSH-PUSH LEFT BUTTON		
MATERIAL 材料		PRODUCT SPEC 製品規格	SIZE	CAGE CODE	DRAWING NO 番号
		APPLICATION SPEC 取付適用規格	A3	00779	C-1827070
		WEIGHT	RESTRICTED TO		
		CUSTOMER DRAWING		SCALE 尺度 1:1	SHEET 5 OF 5 REV A