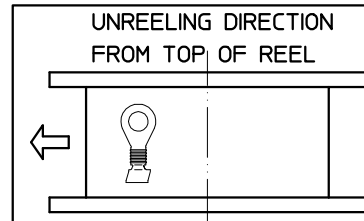
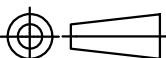


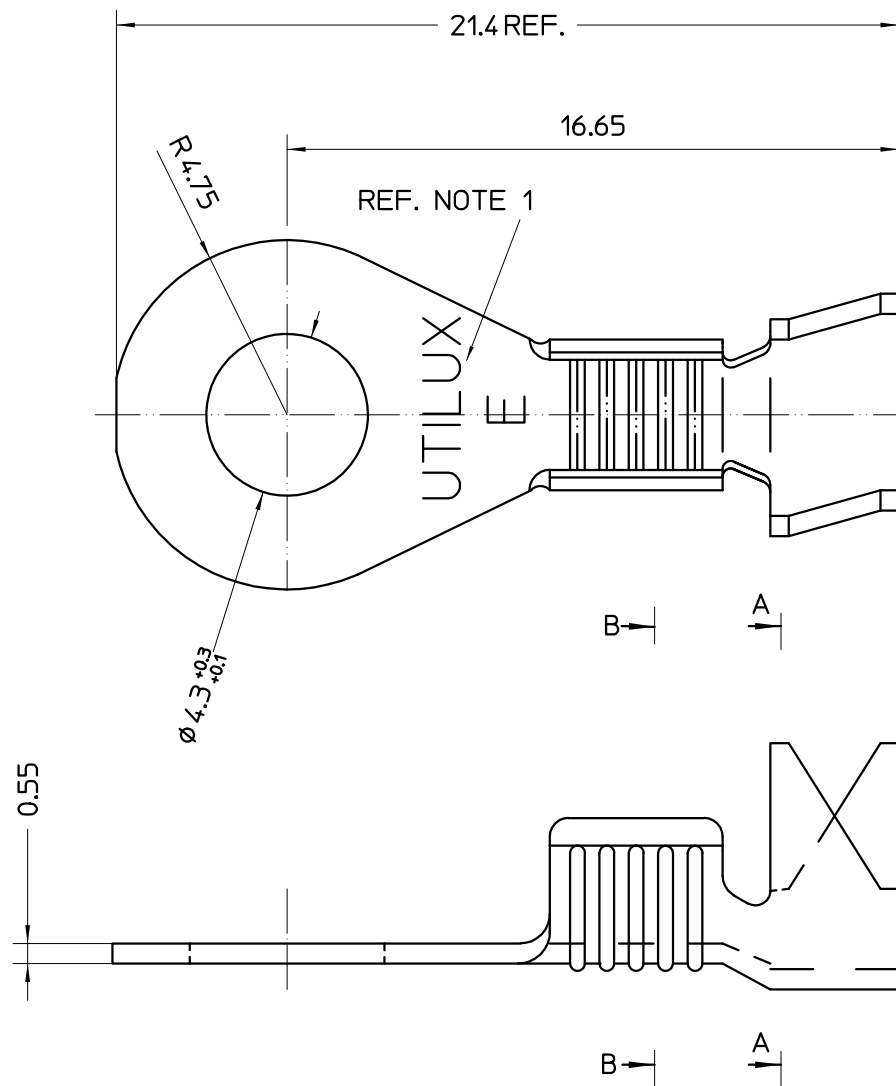
THIS INFORMATION IS CONFIDENTIAL AND PROPRIETARY TO TYCO ELECTRONICS CORPORATION AND ITS WORLDWIDE SUBSIDIARIES AND AFFILIATES. IT MAY NOT BE DISCLOSED TO ANYONE OTHER THAN TYCO ELECTRONICS PERSONNEL WITHOUT WRITTEN AUTHORIZATION FROM TYCO ELECTRONICS CORPORATION, HARRISBURG, PENNSYLVANIA, USA.

NOTES:

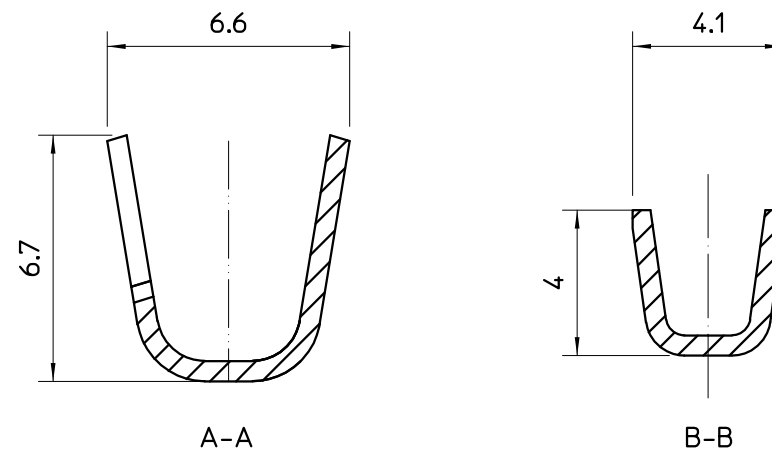
1. 'UTILUX' OR 'AMP' LOGO STAMPED AS REQUIRED.
2. THIS PRODUCT IS UL APPROVED
3. WIRE SIZE RANGE:  
CONDUCTOR: 0.5mm<sup>2</sup> - 1.5mm<sup>2</sup>  
INSULATION:  $\phi$ 2.3mm -  $\phi$ 3.2mm



THIS DRAWING IS A CONTROLLED DOCUMENT.		DWN: WR 07JUL05	<b>tyco</b> Tyco Electronics Corporation						
ALL DIMENSIONS IN mm:		CHK: HT 07JUL05	<b>Electronics</b> AUSTRALIA						
		APVD: WR 07JUL05	NAME:  TERMINAL, RING/EYE						
		PRODUCT SPEC:  -							
		APPLICATION SPEC:  -							
		WEIGHT: -							
TOLERANCES UNLESS OTHERWISE SPECIFIED: DIMENSION (mm) TOLERANCE(+mm) LESS THAN 10 0.4 OVER 10 TO 30 0.5 OVER 30 TO 80 0.7 OVER 80 TO 250 1.0 ANGLES ±2°		SIZE A3 CAGE CODE DRAWING NO C=1627030 RESTRICTED TO -							
MATERIAL REF. BLOCK		FINISH REF. BLOCK		CUSTOMER DRAWING			SCALE 5:1	SHEET 1 OF 1	REV 0



LOC	DIST	REVISIONS				
		P	LTR	DESCRIPTION	DATE	APVD
U	-	-	-	-	-	-



BRASS C26000 PRE-TIN	PRE-TIN	TERMINAL H1287ET	1-1627030-4
BRASS C26000	NATURAL	TERMINAL H1287	1-1627030-2
MATERIAL	FINISH	DESCRIPTION	PART No.