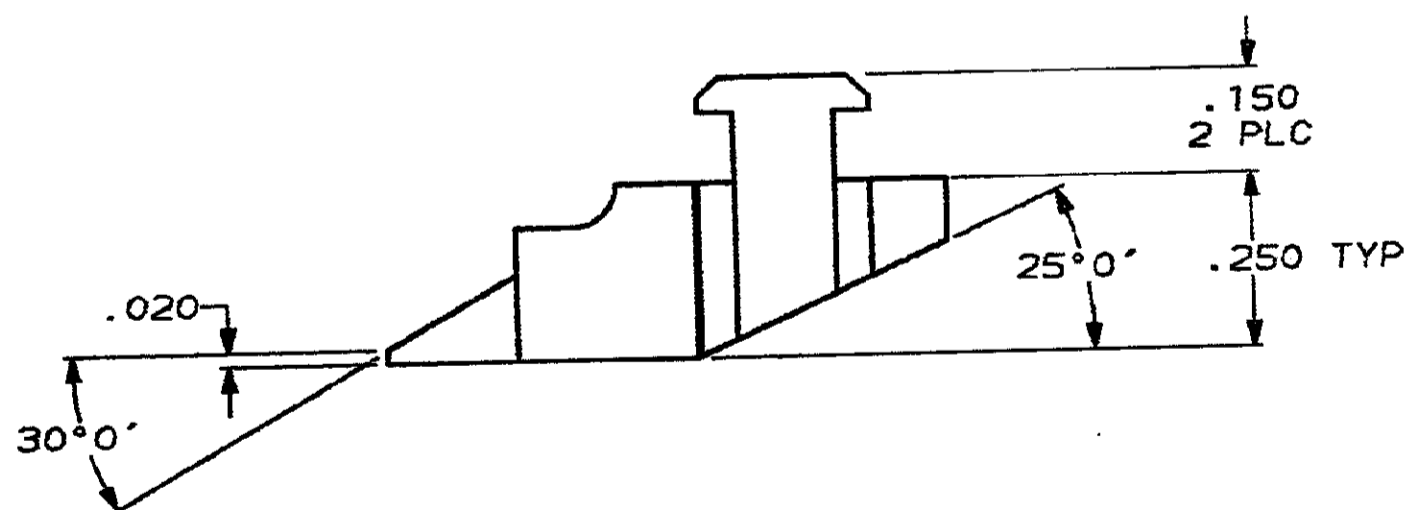
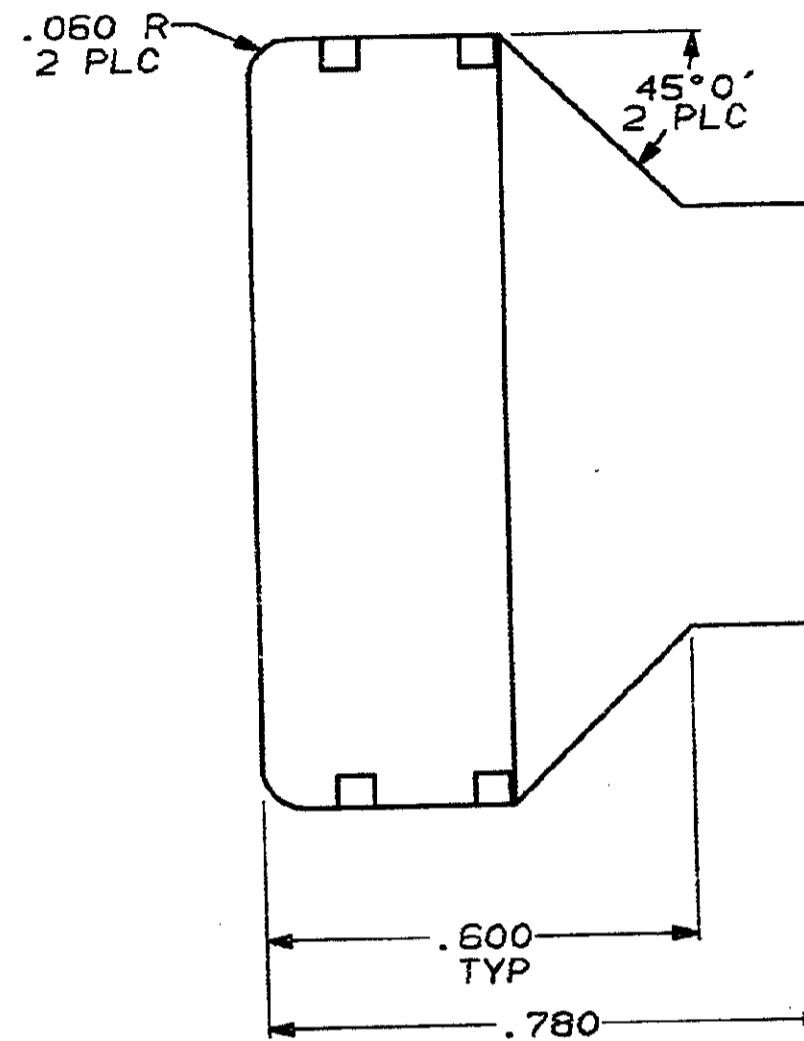
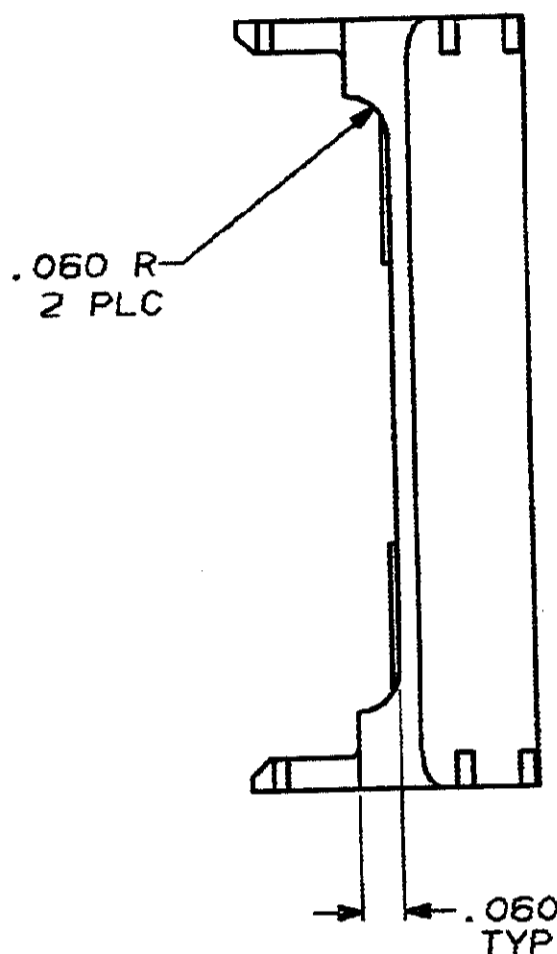
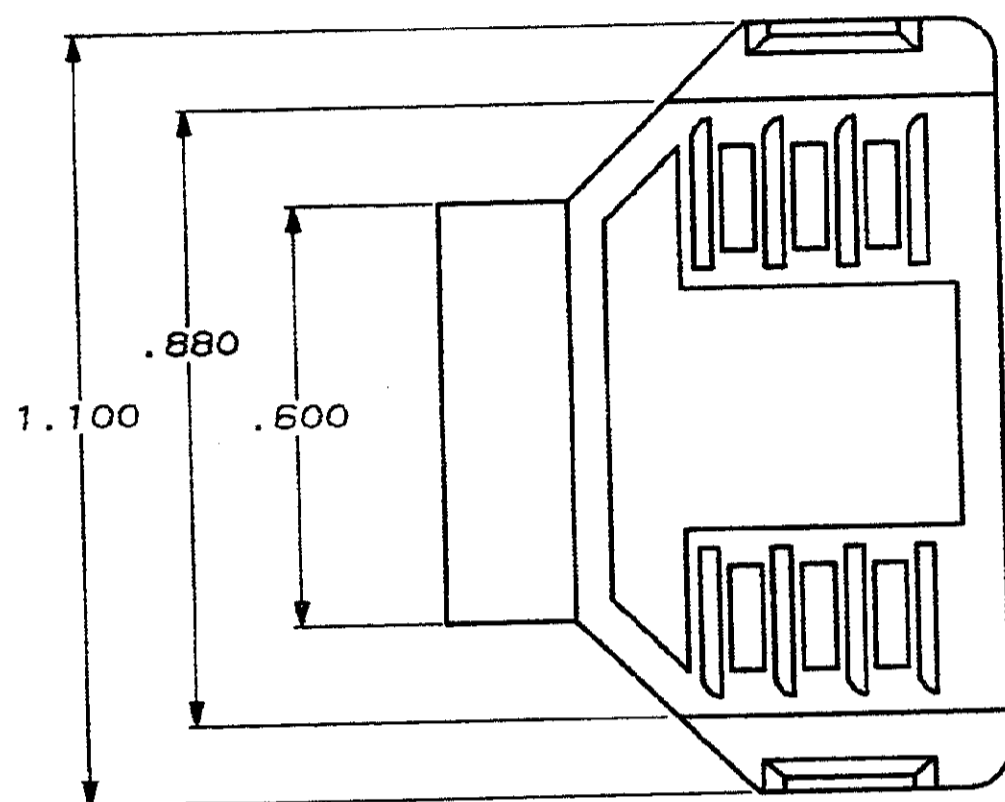


DRAWING MADE IN THIRD ANGLE PROJECTION

THIS DRAWING IS UNPUBLISHED. RELEASED FOR PUBLICATION .19

© COPYRIGHT 19 BY AMP INCORPORATED. ALL INTERNATIONAL RIGHTS RESERVED.

MOD		LOC	QTY	REVISIONS					
13	BD	50	P	F	ZONE	LTR	DESCRIPTION	DATE	APPD
						0	RELEASED PER NPR 2420, WAS 89-1014-2	5-24-89	-
						A	REV PER ECN BD4377	10/12/90	-



943060-1

PART NO

DO NOT SCALE PRINT.
UNLESS SPECIFIED
DIMENSIONS IN INCHES
TOLERANCES ON:
2 PLC DEC ± -
3 PLC DEC ± .005
ANGLES ± 0°30'

MATERIAL
NYLON, BEIGE

FINISH
-

WEIGHT
-

DR 5-24-89
W.G. LENKER

CHK 6-5-89
R. STONE

APPD 6-5-89
R.W. MYERS

APPD 6-7-89
D. SUMMERS

PRODUCT SPEC
-

APPLICATION SPEC
-

AMP | AMP INCORPORATED
Harrisburg, Pa. 17105

NAME
CABLE CLAMP, TOP,
16 CONDUCTOR, FLAT
CABLE, SDL

SIZE **C** FSCH NO 00779 DRAWING NO 943060

SCALE 4:1 SHEET 1 OF 1

CUSTOMER DRAWING