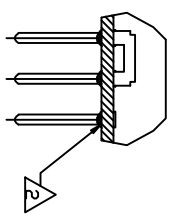
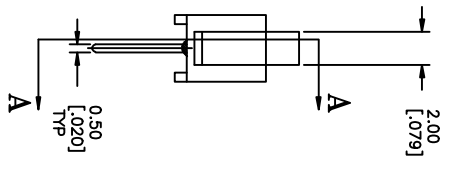
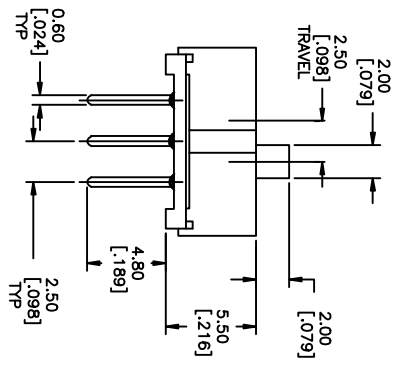
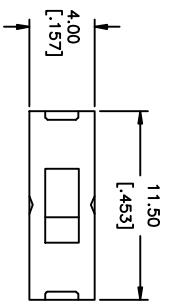


4

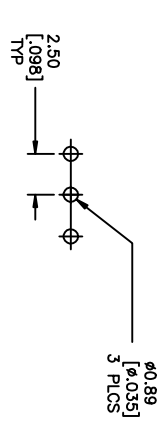
3

2

1



SECTION A-A



PC HOLE LAYOUT

REV	DATE	BY	CHKD	APP'D
AD 00				
A	06/07/04			BSV/MASS

MAKE-BEFORE-BREAK
SPDT
SPECIFICATIONS:

MATERIALS:
BASE, NYLON 66 UL94V-0, 25% GF-BLACK
COVER, POLYACETAL UL94-HB, 25% GF-BLACK
ACTUATOR, POLYACETAL, UL94-HB, BLACK
MOVING CONTACT, COPPER ALLOY-SILVER FINISH
FIXED CONTACT/TERMINAL, COPPER ALLOY-SILVER FINISH

ELECTRICAL:
CONTACT RATING, 100MA@30VDC
INITIAL CONTACT RESISTANCE, 30 MILLIOHMS MAX
INSULATION RESISTANCE, 100 MEGOHM MIN.
DIELECTRIC STRENGTH, 500 V AC FOR 1 MINUTE
MECHANICAL:
ACTUATION FORCE, 200 +/-150 GRAMS
ACTUATION TRAVEL, 2.50L [0.098]
LIFE EXPECTANCY, 10,000 CYCLES

ENVIRONMENTAL:
OPERATING TEMPERATURE, -20 TO +60 DEGREES C
STORAGE TEMPERATURE, -20 TO +60 DEGREES
SOLDERABILITY, PER EA-364-52, CLASS 2, CATEGORY 1, 95% MINIMUM COVERAGE
RESISTANCE TO SOLDER HEAT PER 109-202, CONDITION B

1. ALL MATERIALS AND FINISHES SHALL COMPLY WITH EU DIRECTIVE 2002/95/EC OF 27/JAN/2003 (ROHS)
2. ANTI SOLDER WICK SEAL AT TERMINAL TO BASE INTERFACE

TERMINALS CONNECTED WHEN SLIDE IS IN POSITION SHOWN	1-2	NONE	2-3	WMS12	1437575-4
				ALCO P/N	TE P/N

THIS DRAWING IS A CONTROLLED DOCUMENT. SEE SPECIFICATION FOR IDENTIFICATION.

DATE	REV	DESCRIPTION
06/07/04	1	REVISED TO COMPLY WITH ROHS

Part Name: SLIDE SWITCH
MMS-12
Part No: 1437575-4
Drawing No: 100779
Customer Drawing: 5:1

1437575-4