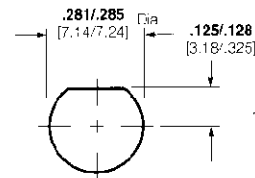
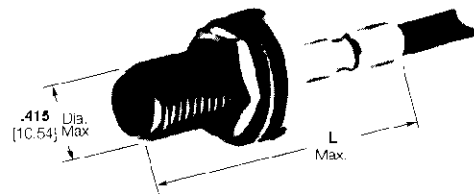


## SMA Connectors for Flexible Cable (Continued)

### Bulkhead Jacks, Crimp

#### Materials and Finishes

(See page 112)



Panel Thickness  
.055-.103 [1.4-2.62]  
**Recommended  
Panel Cutout**

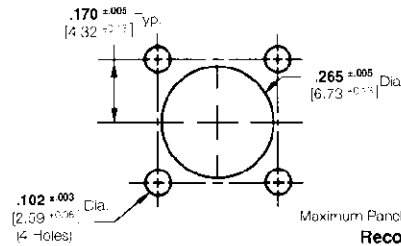
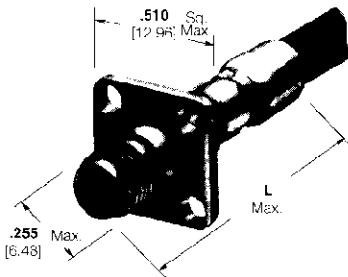
Connector Cable Range Selection Code <sup>1</sup>	RG/U Cable	Body and Coupling Nut Material and Plating	Style	M39012/ Military No. and/or Comments	Part No.	Dim. L	Integral Die Hand Tool	Die Insert for Pneumatic Tools 69365, 69365-3
B	174, 188, 188A, 316	Stainless Steel, Passivated	Mil Type	—	<b>225608-4</b>	<b>1.060</b> 26.93	220061-1	220091-1
		Brass, Nickel	Commercial	—	<b>221169-2</b>	<b>1.188</b> 30.18	220061-1	220091-1
D1	141, 141A, 303	Stainless Steel, Passivated	Mil Type	59B3024	<b>225608-9</b>	<b>1.140</b> 28.96	220061-1	220091-1
E1	142, 142A, 142B, 400, Belden 9246	Stainless Steel, Passivated	Mil Type	59B3022	<b>225608-3</b>	<b>1.140</b> 28.96	220061-1	220091-1
		Stainless Steel, Passivated	Mil Type	—	<b>221169-1</b>	<b>1.188</b> 30.18	220061-1	220091-1
—	188 Double Braid, 316 Double Braid	Stainless Steel, Passivated	Mil Type	—	<b>1-225608-1</b>	<b>.950</b> 24.13	59962-1	—
		Brass, Nickel	Commercial	—	<b>221169-3</b>	<b>1.188</b> 30.18	59962-1	—

<sup>1</sup>Refer to pages 14 and 15 for code specifications.

### Panel Jacks, Crimp (4 Holes)

#### Materials and Finishes

(See page 112)



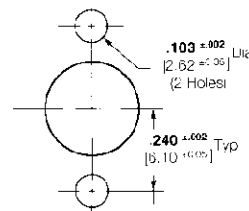
Maximum Panel Thickness .095 [2.41]  
**Recommended  
Panel Cutout**

Connector Cable Range Selection Code <sup>1</sup>	RG/U Cable	Body and Coupling Nut Material and Plating	Style	M39012/ Military No. and/or Comments	Part No.	Dim. L	Integral Die Hand Tool	Die Insert for Pneumatic Tools 69365, 69365-3
B	174, 188, 188A, 316	Brass, Nickel	Commercial	—	<b>221126-2</b>	<b>1.188</b> 30.18	220061-1	220091-1
E1	142, 142A, 142B, 400, Belden 9246	Brass, Nickel	Commercial	—	<b>221126-1</b>	<b>1.188</b> 30.18	220061-1	220091-1
—	188 Double Braid, 316 Double Braid	Brass, Nickel	Commercial	—	<b>221126-3</b>	<b>1.188</b> 30.18	59962-1	—

<sup>1</sup>Refer to pages 14 and 15 for code specifications.

### Panel Jacks, Crimp (2 Holes)

Maximum Panel Thickness .095 [2.41]  
**Recommended  
Panel Cutout**



Connector Cable Range Selection Code <sup>1</sup>	RG/U Cable	Body and Coupling Nut Material and Plating	Style	M39012/ Military No. and/or Comments	Part No.	Dim. L	Integral Die Hand Tool	Die Insert for Pneumatic Tools 69365, 69365-3
E1	142	Stainless Steel, Passivated	Commercial	—	<b>448834-1</b>	<b>1.188</b> 30.18	220051-1	220091-1
B	316, 188, 174	Stainless Steel, Passivated	Commercial	—	<b>448834-2</b>	<b>1.188</b> 30.18	220051-1	220091-1
—	316, 188 Double Braid	Stainless Steel, Passivated	Commercial	—	<b>448834-3</b>	<b>1.188</b> 30.18	59962-1	—