

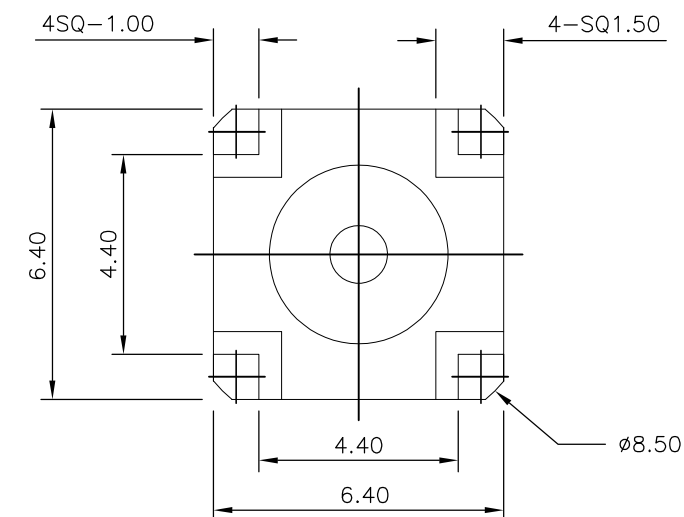
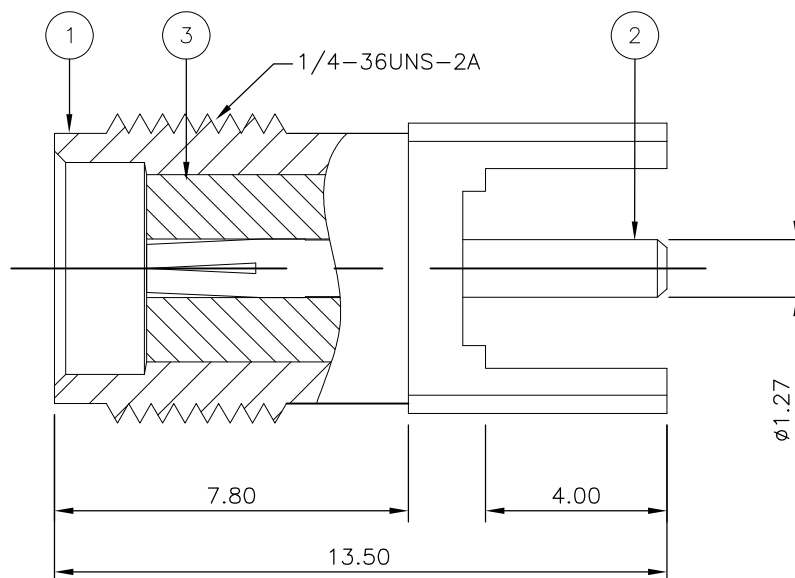
THIS DRAWING IS UNPUBLISHED. RELEASED FOR PUBLICATION JULY, 2006.

© COPYRIGHT 2006 BY TYCO ELECTRONICS CORPORATION. ALL RIGHTS RESERVED.

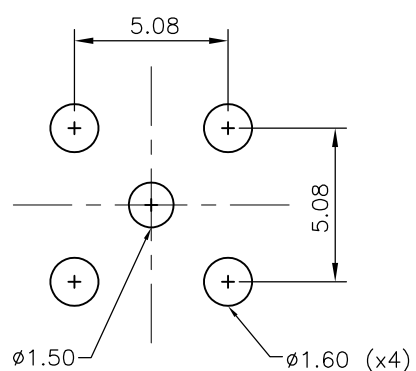
LOC	DIST	REVISIONS					
E	B	P	LTR	DESCRIPTION	DATE	DWN	APVD
		B		REVISED PER ECO-09-003420	19FEB09	ANS	BOB

NOTES

- 1 SINGLE PACK IN ACCORDANCE WITH AMP SPEC 107-3275
- 2 100 TRAY PACK IN ACCORDANCE WITH AMP SPEC 107-3275
- 3 Au PLATING



RECOMMENDED PCB LAYOUT WITH MOUNTING POSTS



QTY	UNIT	MATERIAL	DESCRIPTION	ITEM
1	1	PTFE	INSULATOR	3
1	1	PHOSPHOR BRONZE	SOCKET	2
1	1	ZINC ALLOY	BODY	1
5	15			0

THIS DRAWING IS A CONTROLLED DOCUMENT.		DWN ANSON MA 19FEB09	Tyco Electronics Corporation Kunshan, Jiangsu, PRC 215312		
DIMENSIONS: mm		CHK RITA ZUO 19FEB09	NAME SMA STRAIGHT PCB SOCKET DIE CAST		
TOLERANCES UNLESS OTHERWISE SPECIFIED:		APVD BOB ZHAO 19FEB09	PRODUCT SPEC 108-112000		
0 PLC ± -		APPLICATION SPEC -			
1 PLC ± -		SIZE A3			
2 PLC ± 0.2		CAGE CODE 00779			
3 PLC ± -		DRAWING NO C-1814832			
4 PLC ± -		RESTRICTED TO -			
ANGLES ± -		SCALE NTS			
FINISH -		SHEET 1 OF 1			
MATERIAL SEE TABLE		REV B			
		CUSTOMER DRAWING			