

PRODUCT SPECIFICATION

1. SCOPE

1.1. Content

This specification covers the performance, tests and quality requirements for the AMPLIMITE* HDE connector with (removable) insulation displacement (and "F" crimp) contacts in a one piece plastic housing, with or without a metal shell. The assemblies can contain a combination of insulation displacement and "F" crimp HDE contacts.

1.2. Qualification

When tests are performed on the subject product line, the procedures specified in AMP 109 series specifications shall be used. All inspections shall be performed using the applicable inspection plan and product drawing.

2. APPLICABLE DOCUMENTS

The following documents form a part of this specification to the extent specified herein. In the event of conflict between the requirements of this specification and the product drawing, the product drawing shall take precedence. In the event of conflict between the requirements of this specification and the referenced documents, this specification shall take precedence.

2.1. AMP Documents

- A. 109-1: General Requirements for Test Specifications
- B. 109 Series: Test Specifications as indicated in Figure 1. (Comply with MIL-STD-202, MIL-STD-1344 and EIA RS-364)
- C. Corporate Bulletin 401-76: Cross-reference between AMP Test Specifications and Military or Commercial Documents
- D. 114-40002 : Application Specification, Contact, AMPLIMITE, HDE-20
- E. 114-40003: Application Specification, Contact, AMPLIMITE, HDE-20, "F" Crimp
- F. 501-115 : Test Report

3. REQUIREMENTS

3.1. Design and Construction

Product shall be of the design, construction and physical dimensions specified on the applicable product drawing.

*Trademark of AMP Incorporated

Product Codes: 4859,4944,4975
5810,5820.

				DR F.Rinehardt 6/20/90		AMP AMP Incorporated Harrisburg, PA 17105-3608	
				CHK J.E.Westman 6/22/90			
				APP V.Kumar 6/25/90			
				NO 108-40011		REV B	LOC B
B	Revise per ECN BD-5535	SR	11/18 91	TITLE CONNECTOR, AMPLIMITE HDE-20, INSULATION DISPLACEMENT			
LTR	REVISION RECORD	APP	DATE				
				PAGE 1 OF 11			

3.2. Materials

- A. Contact: Phosphor bronze, gold on mating end, tin plated on crimp end.
- B. Housing: Glass filled polyester, black, UL 94V-0

3.3. Ratings

- A. Voltage: 250 vac
- B. Current: Fully loaded and energized connectors
 - (1) 30-28 AWG 1.0 A
 - (2) 26 AWG 1.5 A
 - (3) 24 AWG 2.0 A
 - (4) 22 AWG 2.4 A
 - (5) 20 AWG 3.0 A
 - (6) 18 F crimp 3.7 A
- C. Temperature: -55° to 105°C

3.4. Performance and Test Description

The product is designed to meet the electrical, mechanical and environmental performance requirements specified in Figure 1. All tests are performed at ambient temperature unless otherwise specified.

3.5. Test Requirements and Procedures Summary

Test Description	Requirement	Procedure
Examination of Product	Meets requirements of product drawing and AMP Spec 114-40002 and 114-40003.	Visual, dimensional and functional per applicable quality inspection plan.
ELECTRICAL		
Termination Resistance, Dry Circuit	30 milliohms maximum.	Subject mated contacts assembled in housing to 50 mv open circuit at 100 ma maximum, see Figure 4; AMP Spec 109-6-1.
Dielectric Withstanding Voltage	1 kvac dielectric withstanding voltage, one minute hold. 1 milliampere maximum leakage current.	Test between adjacent contacts of unmated connector assemblies; AMP Spec 109-29-1.

Figure 1 (cont)



AMP Incorporated
Harrisburg, PA 17105-3608

PAGE NO

2

108-40011

REV

B

LOC

B

Test Description	Requirement	Procedure
Insulation Resistance	5000 megohms minimum initial. 500 megohms final	Test between adjacent contacts of unmated connector assembly; AMP Spec 109-28-1.
Temperature Rise vs Current	Maximum temperature rise at specified current, 30°C. At a max. ambient temp. of 70°C	Measure temperature rise vs current; AMP Spec 109-45-1.

MECHANICAL

Vibration, Random	No discontinuities greater than 1 microsecond. See note (a).	Subject mated connectors to 20 G's rms with 100 ma current applied 20 minutes each axis, see Figure 3; AMP Spec 109-21-5, test level F.
Physical Shock	No discontinuities greater than 1 microsecond. See note (a).	Subject mated connector to 50 G's half-sine shock pulses of 11 millisecond duration; 3 shocks in each direction applied along the 3 mutually perpendicular planes total 18 shocks, see Figure 3; AMP Spec 109-26-1.
Mating Force	pounds maximum. Number of All Metal Size Positions PlasticShell 1 9 2.8 30 2 15 4.7 33 3 25 7.8 37 4 37 11.6 40	Measure force necessary to mate connector assembly incorporating free floating fixtures at a rate of 1.0 inch/minute; AMP Spec 109-42, cond A.
Unmating Force	As above.	Measure force necessary to unmate connector assembly at a rate of 1.0 inch/minute; AMP Spec 109-42, cond A.

Figure 1 (cont)

AMP

AMP Incorporated
Harrisburg, PA 17105-3608

PAGE NO

3

108-40011

REV

B

LOC

B

Test Description	Requirement	Procedure																
Contact Insertion Force	3 pounds maximum per contact.	Measure force to insert contact into housing; AMP Spec 109-41.																
Contact Retention	Contacts shall not dislodge from the connector housing.	Apply axial load of 7 pounds to contacts; AMP Spec 109-30.																
Contact Engaging Force	8 ounces maximum per contact.	Measure force using gage A, as indicated in Figure 5 ; AMP Spec 109-35, engagement depth .220.																
Contact Separating Force	.75 ounces minimum per contact.	Size 2 times using gage A, as indicated in Figure 5 ,insert gage B and measure force to separate; AMP Spec 109-35, separation depth .220 .																
Crimp Tensile	<table><tr><td>Wire Size, AWG</td><td>Crimp Tensile pounds minimum</td></tr><tr><td>18(F Crimp)</td><td>27</td></tr><tr><td>20</td><td>9.5</td></tr><tr><td>22</td><td>6</td></tr><tr><td>24</td><td>4</td></tr><tr><td>26</td><td>2.5</td></tr><tr><td>28</td><td>2.5</td></tr><tr><td>30</td><td>1</td></tr></table>	Wire Size, AWG	Crimp Tensile pounds minimum	18(F Crimp)	27	20	9.5	22	6	24	4	26	2.5	28	2.5	30	1	Determine crimp tensile at a rate of 1 inch/minute; AMP Spec 109-16.
Wire Size, AWG	Crimp Tensile pounds minimum																	
18(F Crimp)	27																	
20	9.5																	
22	6																	
24	4																	
26	2.5																	
28	2.5																	
30	1																	
Durability	See note (a).	Mate and unmate connector assemblies for cycles listed, at a maximum rate of 200 cycles/hour; AMP Spec 109-27. <table><tr><td>Plating</td><td>Cycles</td></tr><tr><td><u>microinches</u></td><td></td></tr><tr><td>Gold Flash</td><td>100</td></tr><tr><td>30 Gold</td><td>500</td></tr></table>	Plating	Cycles	<u>microinches</u>		Gold Flash	100	30 Gold	500								
Plating	Cycles																	
<u>microinches</u>																		
Gold Flash	100																	
30 Gold	500																	

ENVIRONMENTAL

Thermal Shock	See note (a).	Subject mated connectors to 5 cycles between -55° and 105°C; AMP Spec 109-22.
---------------	---------------	---

Figure 1

Test Description	Requirement	Procedure
Humidity-Temperature Cycling	See note (a).	Subject mated connectors to 10 humidity-temperature cycles between 25° and 65°C at 95% RH; AMP Spec 109-23-4, cond B. Electrical measurements shall be made within 5 hours of removal of samples from chamber.
Mixed Flowing Gas	See note (a).	Precondition connectors to 10 durability cycles. Subject mated connectors to environmental class III for 20 days; AMP Spec 109-85-3.
Temperature Life	See note (a).	Subject mated connectors to temperature life; AMP Spec 109-43, test level 10 (105°), test duration C (500 hours).

(a) Shall meet visual requirements, show no physical damage, and shall meet requirements of additional tests as specified in the test sequence in Figure 2.

Figure 1 (end)

AMP AMP Incorporated Harrisburg, PA 17105-3608	PAGE	NO	REV	LOC
	5	108-40011	B	B

3.6. Product Qualification and Requalification Tests

Test or Examination	Test Group (a)							
	1	2	3	4(b)	5	6	7	8
	Test Sequence (c)							
Examination of Product	1,9	1,6	1,6	1,5	1,5	1,8	1,5	1
Termination Resistance, Dry Circuit	3,7	2,5	2,5	2,4	2,4			
Dielectric Withstanding Voltage						3,7		
Insulation Resistance						2,6		
Temperature Rise vs Current				3				
Vibration	5							
Physical Shock	6							
Mating Force	2							2
Unmating Force	8							3
Contact Insertion Force							2	
Contact Retention							5	
Contact Engaging Force							3	
Contact Separating Force							4	
Crimp Tensile							6	
Durability	4	3	3					
Thermal Shock						4		
Humidity-Temperature Cycling			4			5		
Mixed Flowing Gas					3			
Temperature Life		4						

(a) See Para 4.1.A.

(b) Discontinuities shall not be measured for this test group.

(c) Numbers indicate sequence in which tests are performed.

Figure 2

AMP

AMP Incorporated
Harrisburg, PA 17105-3608

PAGE NO

6

108-40011

REV

B

LOC

B

4. QUALITY ASSURANCE PROVISIONS

4.1. Qualification Testing

A. Sample Selection

Connectors housings and contacts shall be prepared in accordance with applicable Instruction Sheets. They shall be selected at random from current production. Test groups 1, 2, 3 and 4 shall consist of 37 position, all plastic plugs and receptacles; gold flash duplex plated contacts. Contacts in these groups shall be terminated as follows: 20 and 22 AWG to the number 3 slot, 24 and 26 AWG to the number 2 slot, and 30 AWG to the number 1 slot. Test group 5 shall consist of 25 position, all plastic plugs and receptacles; gold flash duplex plated contacts. Contacts in group 5 shall be terminated as follows: 22 AWG to the number 3 slot, 22 and 26 AWG to the number 2 slot, 26 and 30 AWG to the number 1 slot. Test group 6 shall consist of 37 position, all plastic plugs and receptacles; gold flash duplex plated contacts. Contacts in group 6 shall be terminated as follows: 20 and 22AWG to the number 3 slot. Test group 7 shall consist of 9 position, all plastic plugs and gold flash duplex plated F crimp replacement contacts. Contacts to be terminated as follows: 20 and 22 AWG to the number 3 slot, 22, 24 and 26 AWG to the number 2 slot, 26, 28 and 30 AWG to the number 1 slot. F crimp contacts to be terminated to 18, 20 and 22 AWG wire and 22, 24 and 26 AWG wire as applicable. Test group 8 shall consist of 9, 15, 25 and 37 position plugs and receptacles; all plastic and metal shall (any plating or slot size) un-terminated.

AMP

AMP Incorporated
Harrisburg, PA 17105-3608

PAGE NO

7

108-40011

REV

B

LOC

B

B. Test Sequence

Qualification inspection shall be verified by testing samples as specified in Figure 2.

4.2. Requalification Testing

If changes significantly affecting form, fit, or function are made to the product or to the manufacturing process, product assurance shall coordinate requalification testing, consisting of all or part of the original testing sequence as determined by development/product, quality, and reliability engineering.

4.3. Acceptance

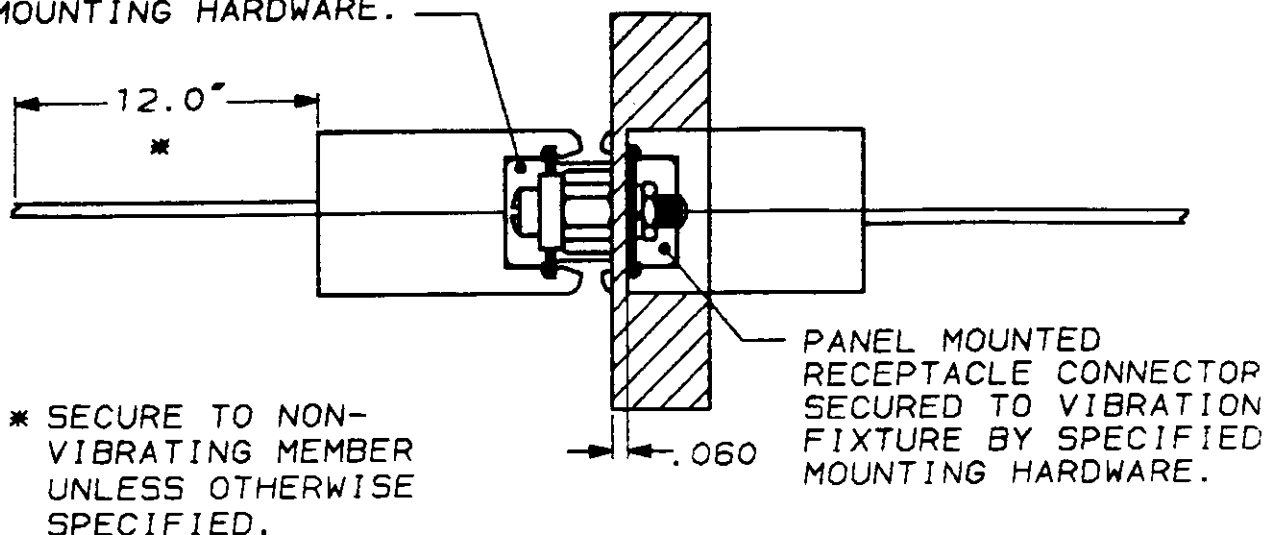
Acceptance is based on verification that the product meets the requirements of Figure 1. Failures attributed to equipment, test setup, or operator deficiencies shall not disqualify the product. When product failure occurs, corrective action shall be taken and samples resubmitted for qualification. Testing to confirm corrective action is required before resubmittal.

4.4. Quality Conformance Inspection

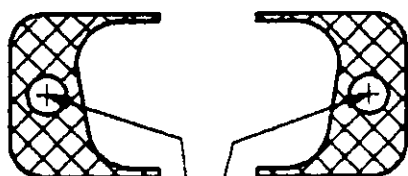
The applicable AMP quality inspection plan will specify the sampling acceptable quality level to be used. Dimensional and functional requirements shall be in accordance with the applicable product drawing and this specification.

AMP AMP Incorporated Harrisburg, PA 17105-3608	PAGE	NO	REV	LOC
	8	108-40011	B	B

PLUG CONNECTOR FULLY MATED
AND FASTENED TO MATING
CONNECTOR BY SPECIFIED
MOUNTING HARDWARE.



NOTE: RECEPTACLE CONNECTOR TO BE MOUNTED ON VIBRATION FIXTURE UNLESS OTHERWISE SPECIFIED.



MOUNTING POINTS

SHELL SIZE	FIXTURE NUMBER
1	
2	
3	468165
4	
5	468165

VIBRATION LEVEL IS
APPLIED TO THE SPECIFIED CONNECTOR
MOUNTING AREA (X X X) OF THE
VIBRATION FIXTURE.

Figure 3
Mounting and Clamping Locations
for Vibration and Physical Shock

AMP

AMP INCORPORATED
Harrisburg, Pa. 17105

PAGE NO

9

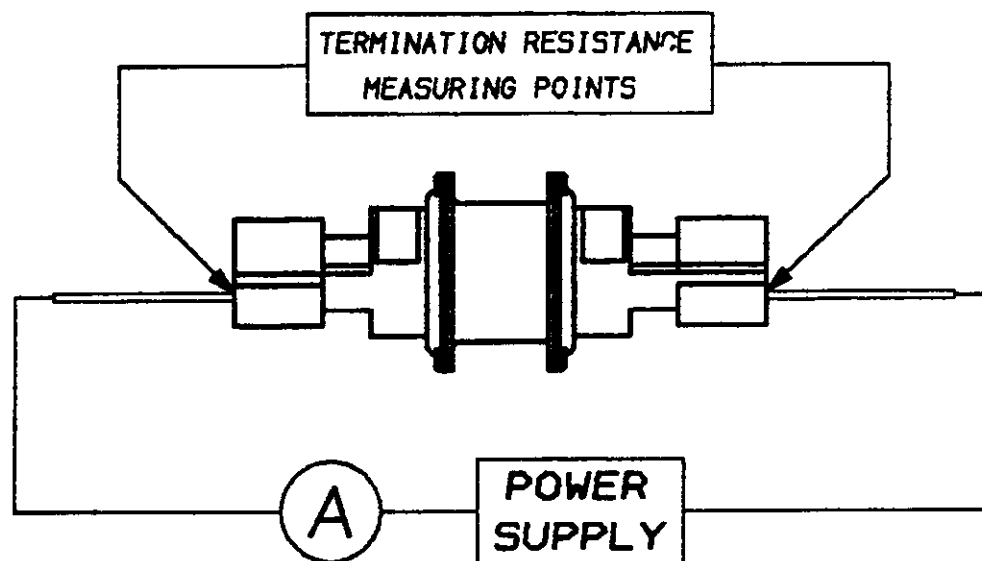
108-40011

REV

B

LOC

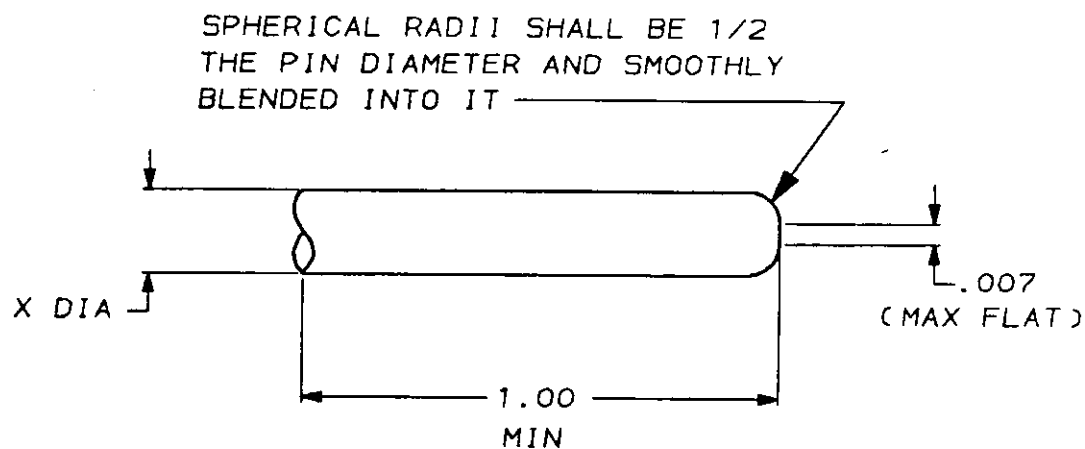
B



TERMINATION RESISTANCE MAY BE MEASURED OUTBOARD OF THE POINTS SHOWN. THE BULK RESISTANCE MUST THEN BE SUBTRACTED.

Figure 4
Resistance and Temperature Measurement Points

Gage	AMP P/N	X
A	27280-8	.0410 +.0000 -.0001
B	27280-7	.0390 +.0001 -.0000



Notes:

1. Gage material: 100-97
2. Heat treat to Rc 68-70
3. This gage is for contact size 20
4. Pin to comply with MS 3197
5. Finish: 6-10 microinches rms

Figure 5

AMP

AMP INCORPORATED
Harrisburg, Pa. 17105

PAGE NO

11

108-40011

REV

B

LOC

B