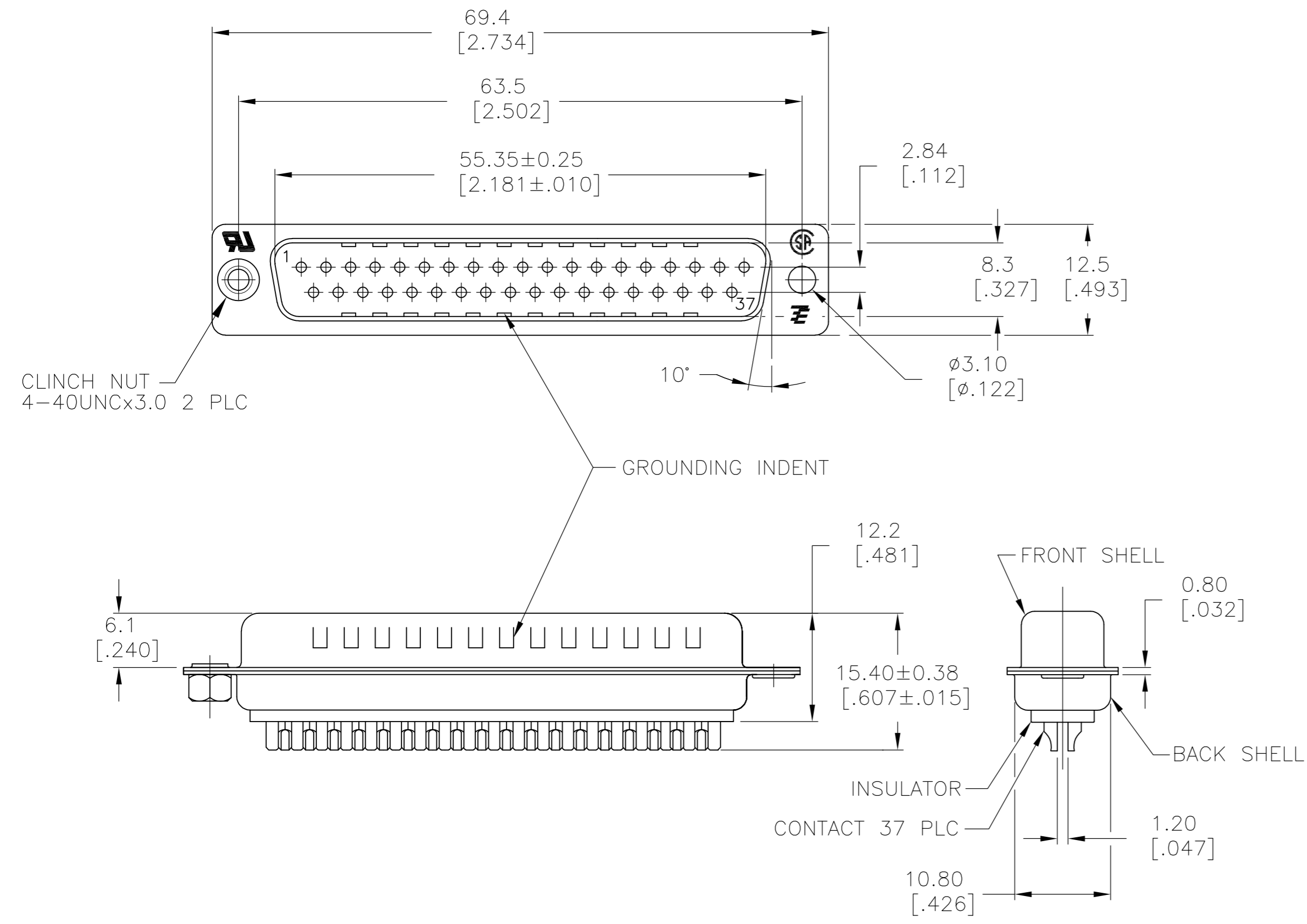


THIS DRAWING IS UNPUBLISHED. RELEASED FOR PUBLICATION
 © COPYRIGHT BY TYCO ELECTRONICS CORPORATION. ALL RIGHTS RESERVED.

LOC		DIST		REVISIONS			
P	LTR	DESCRIPTION	DATE	DWN	APVD		
	S1	REVISED PER ECO-09-013374	04JUN09	HMR	JO		
	S2	REVISED PER ECO-09-021510	15SEP09	KK	AEG		



- 1 MATERIAL:
 FRONT INSULATOR: PBT, 30 %GF, UL94V-0, BLACK COLOR
 BACK INSULATOR: PBT, 30 %GF, UL94V-0, BLACK COLOR
 CONTACT: BRASS
 FRONT SHELL: STEEL
 BACK SHELL: STEEL
 CLINCH NUTS: BRASS
- 2 FINISH:
 CONTACT: GOLD PLATING 0.00002[.0000008] MIN ON CONTACT AREA 0.00229 [.000090] MIN TIN-LEAD PLATING ALL OVER 0.00127[.000050] MIN NICKEL
- 3 CONTACT: GOLD PLATING 0.00076[.000030] MIN ON CONTACT AREA 0.00229 [.000090] MIN TIN-LEAD PLATING ALL OVER 0.00127[.000050] MIN NICKEL
- 4 SHELL: TIN 0.0241[.000095] MIN FULL SHELL
- 5 SHELL: BLUE ZINC: 0.00508[.000200] - 0.00762[.000300] OVER ENTIRE SHELL
- 6 CONTACT: GOLD PLATING 0.00002[.0000008] MIN ON CONTACT AREA 0.00229 [.000090] MIN TIN-COPPER PLATING ALL OVER 0.00127[.000050] MIN NICKEL
- 7 CLINCH NUTS: NICKEL PLATING .00305-.00508[.000120-.000200]
- 8 SPECIFICATION
 ELECTRICAL CHARACTERISTICS: CURRENT RATING: 3 AMPERES
 DIELECTRIC WITHSTANDING VOLTAGE: AC 1000V r.m.s
 INSULATION RESISTANCE: 5000 MEGOHMS MINIMUM AT DC 500V
 CONTACT RESISTANCE: 10 MILLIOHMS MAXIMUM.
- 9 ROHS 2002/95/EC COMPLIANT
- 10 PLUG ASSEMBLY MATES WITH ANY 37 POSITION RECEPTACLE IN AMPLIMITE SERIES
- 11 SOLDER CUP WILL ACCOMMODATE 20 MAX AWG WIRE.
- 12 CONTACT: GOLD PLATING 0.00076[.000030] MIN ON CONTACT AREA 0.00229[.000090] MIN TIN-COPPER ALL OVER 0.00127[.000050] MIN NICKEL PLATING
- 13 OBSOLETE PARTS: OBSOLETE CIS STREAMLINING PER D.RENAUD/D.SINISI

REVISION	DESCRIPTION	DATE	BY	CHKD	APVD	PRODUCT SPEC	APPLICATION SPEC	WEIGHT	SCALE	SHEET	REV
9	STANDARD	NO	NO	6	5	5-747916-4					
13,9	OBSOLETE	STANDARD	YES	YES	6	4	5-747916-6				
9	STANDARD	NO	YES	12	4	5-747916-5					
9	STANDARD	NO	YES	6	4	5-747916-2					
	SUPERSEDED TO 5-747916-2	STANDARD	NO	YES	6	4	747916-7				
	SUPERSEDED TO 5-747916-6	STANDARD	YES	YES	2	4	747916-6				
	SUPERSEDED TO 5-747916-5	STANDARD	NO	YES	3	4	747916-5				
	SUPERSEDED TO 5-747916-4	STANDARD	NO	NO	2	5	747916-4				
	SUPERSEDED TO 5-747916-2	STANDARD	NO	YES	2	4	747916-2				
	PACKAGING TYPE	7	CLINCH NUTS								
			GROUNDING INDENTS								
			CONTACTS								
			SHELLS								
			PART NO.								

THIS DRAWING IS A CONTROLLED DOCUMENT.

DIMENSIONS: mm [INCHES]	TOLERANCES UNLESS OTHERWISE SPECIFIED: 0 PLC ± - 1 PLC ± 0.25 2 PLC ± 0.13 3 PLC ± 0.05 4 PLC ± - ANGLES ± 4°	DWN M.BINNER 04MAR03 CHK R.BENDORF 05MAR03 APVD R.BENDORF 05MAR03	Tyco Electronics Corporation Harrisburg, PA 17105-3608
MATERIAL 1	FINISH SEE TABLE	NAME R.BENDORF PRODUCT SPEC APPLICATION SPEC WEIGHT -	PLUG ASSEMBLY, SOLDER CUP, SIZE 4, 37 POSN, HD-20, AMPLIMITE
		SIZE A2	CAGE CODE 00779
		DRAWING NO C=747916	RESTRICTED TO -
		CUSTOMER DRAWING	SCALE 2:1
			SHEET 1 of 1
			REV S2