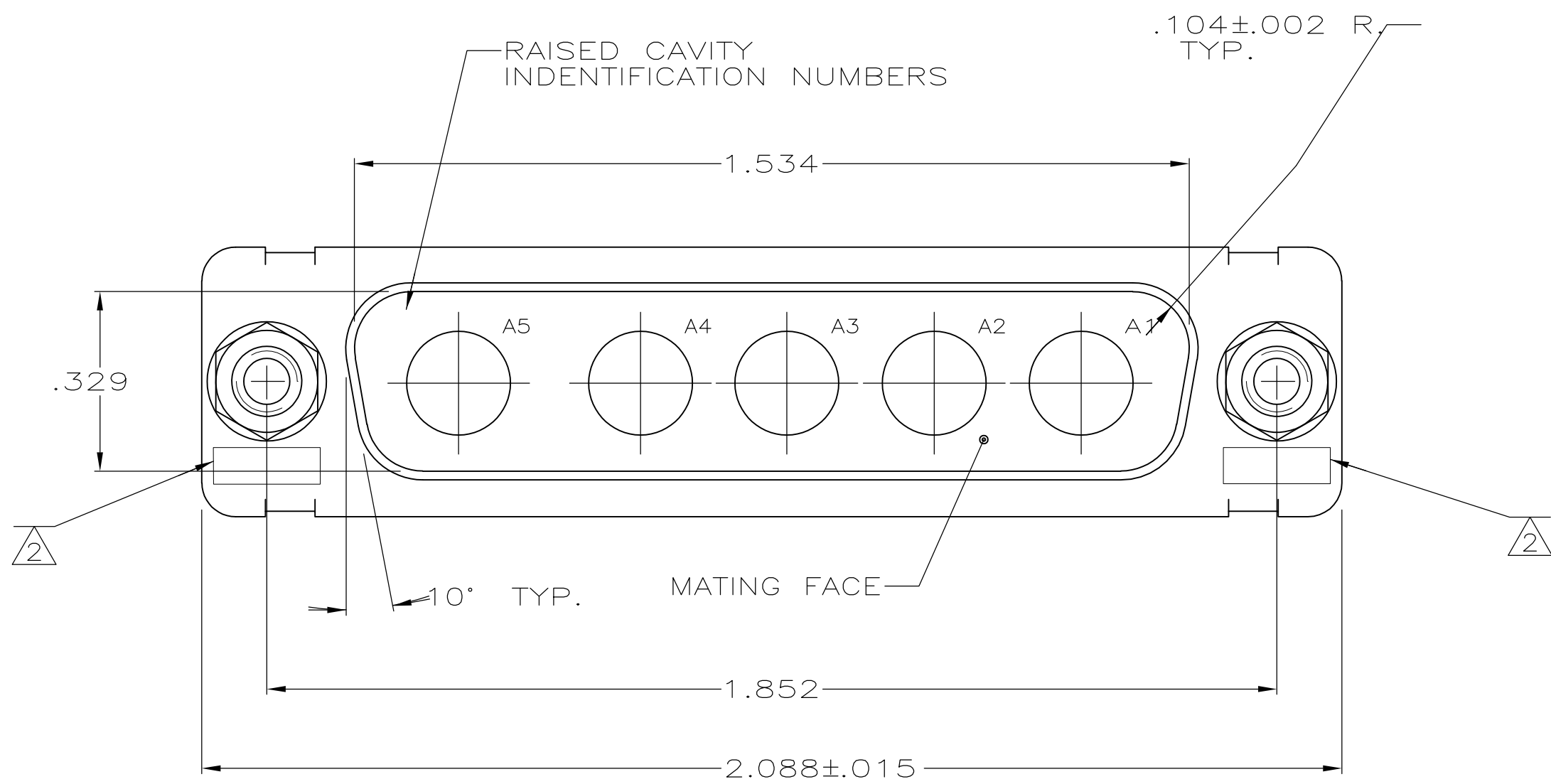
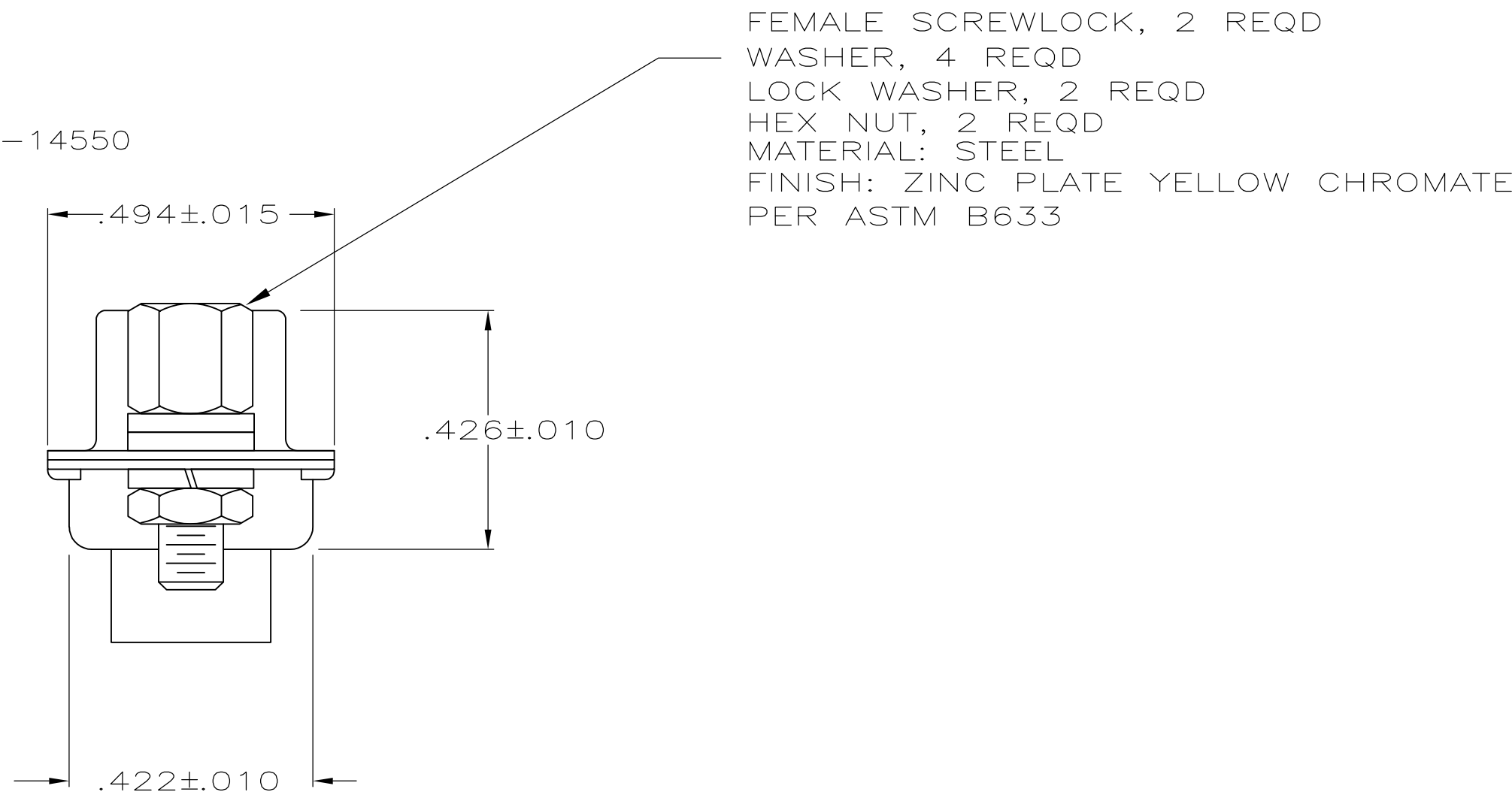
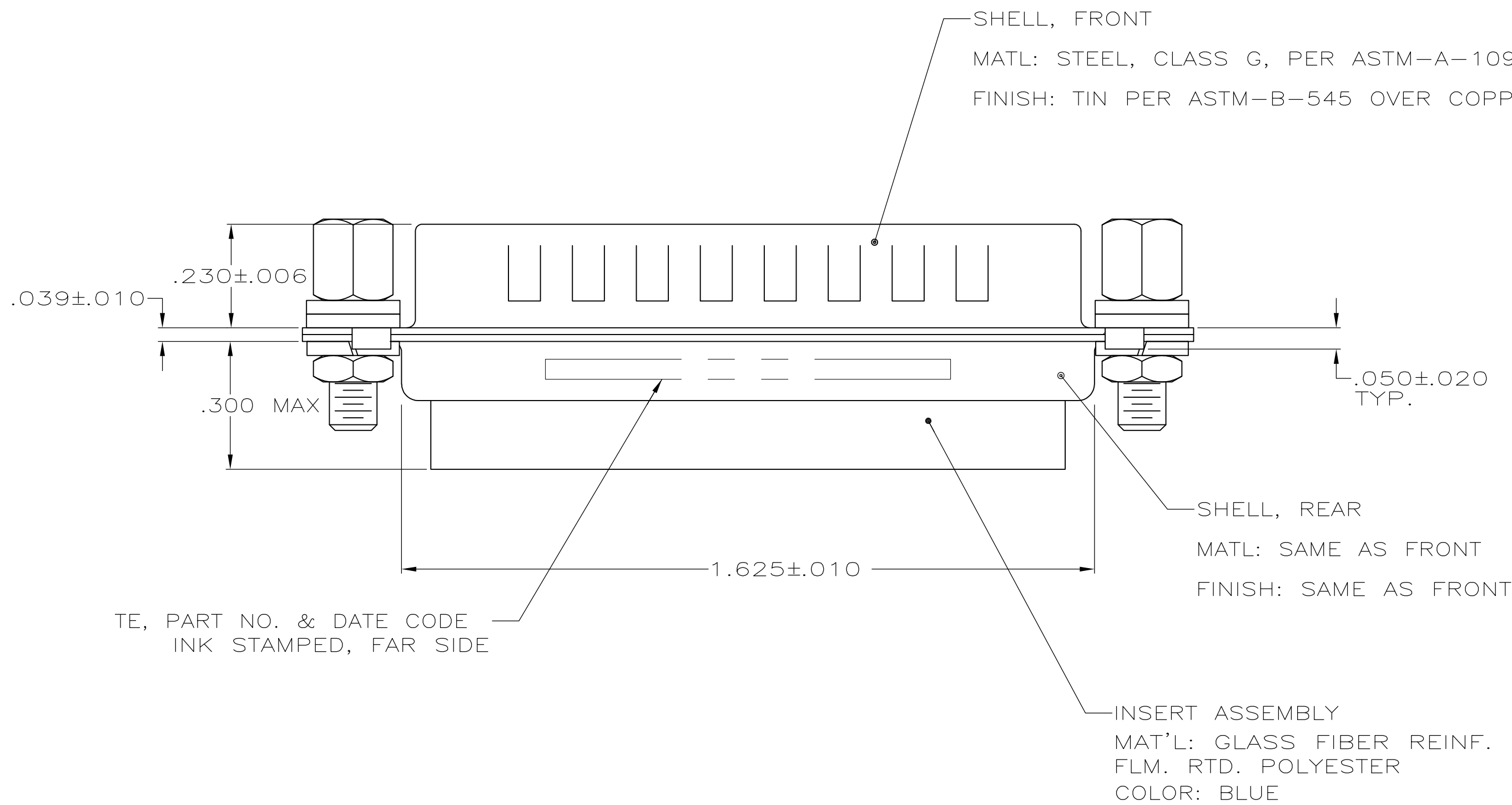


LOC		DIST		REVISIONS					
DF	DO	P	LTR	DESCRIPTION		DATE	DWN	APVD	
			B	REVISED PER ECO-09-012541		04-04-09	CT	RL	



1. THIS PLUG WILL MATE WITH ANY 5C5, SIZE 3 RECEPTACLE IN AMPLIMITE SERIES
2. UL/CSA DESIGNATION STAMPED IN THIS AREA, OPTIONAL.
3. THIS KIT SUPPLIED WITH 4 CONTACTS (NOT INSTALLED), TE P/N 211161-1, WHICH IS DESIGNED FOR 8 AWG WIRE.
4. FOR CONTACT CRIMPING INSTUCTIONS REFER TO TE IS 7516.
5. CONTACT REMOVAL TOOL: TE P/N 58095-1



- WASHER, 4 REQD
- LOCK WASHER, 2 REQD
- HEX NUT, 2 REQD
- MATERIAL: STEEL
- FINISH: ZINC PLATE YELLOW CHROMATE PER ASTM B633

THIS DRAWING IS A CONTROLLED DOCUMENT.		DWN W.D. KISELA CHK F. KINSEY	08JUL93 14JUL93	Tyco Electronics Corporation Harrisburg, PA 17105-3608	
DIMENSIONS: INCHES		TOLERANCES UNLESS OTHERWISE SPECIFIED:		NAME	
		0. PLC	± .	PRODUCT SPEC	
		1. PLC	± .	APPLICATION SPEC	
		2. PLC	± .	SIZE	
		3. PLC	± .005	CAGE CODE	
MATERIAL SEE CALLOUTS		4. PLC	± .	DRAWING NO	
		ANGLES	± .	REV	
		SEE CALLOUTS		CUSTOMER DRAWING	
				SCALE 4:1 SHEET 1 OF 1 REV B	

AS SHOWN	449562-1
MATERIAL	PART NO.

Tyco Electronics Corporation Harrisburg, PA 17105-3608			
RECEPTACLE, KIT, AMPLIMITE 5C5, SIZE 3, SERIES 109, W/ 4 CONTACTS AND FEMALE SCREWLOCK			
SIZE	CAGE CODE	DRAWING NO	RESTRICTED TO
A1	00779	449562	