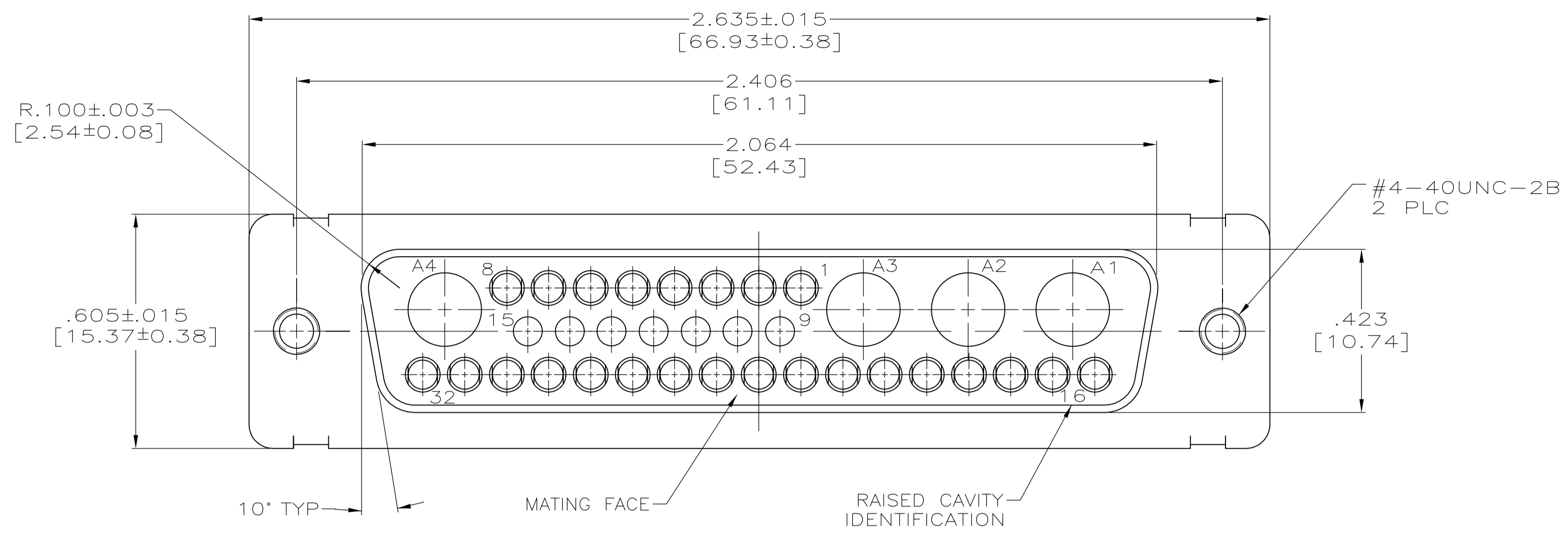
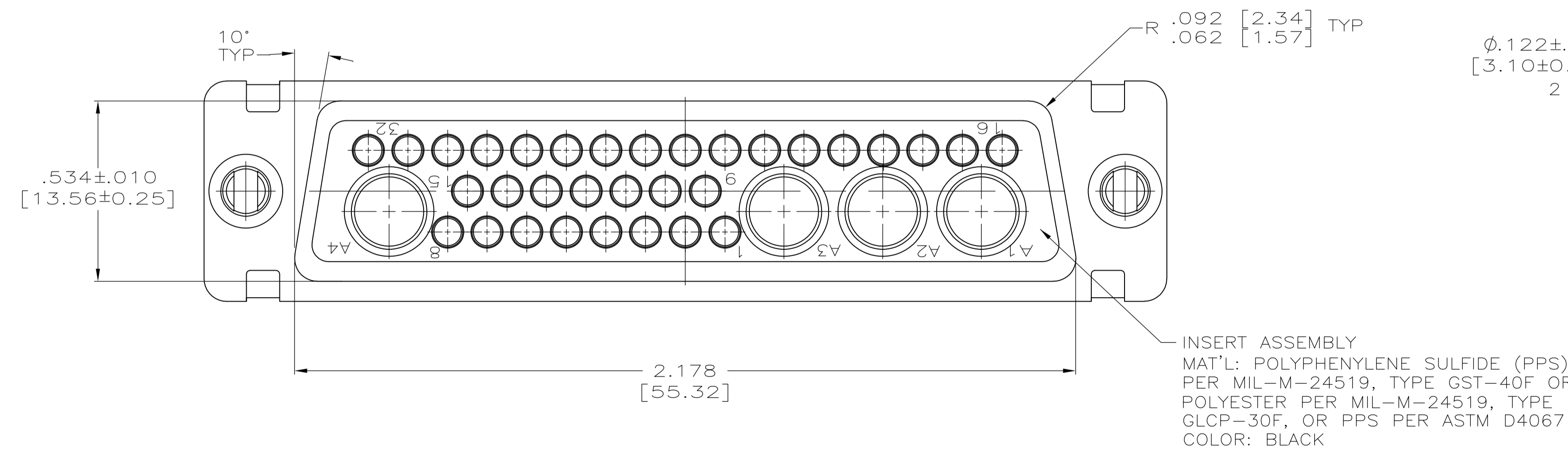
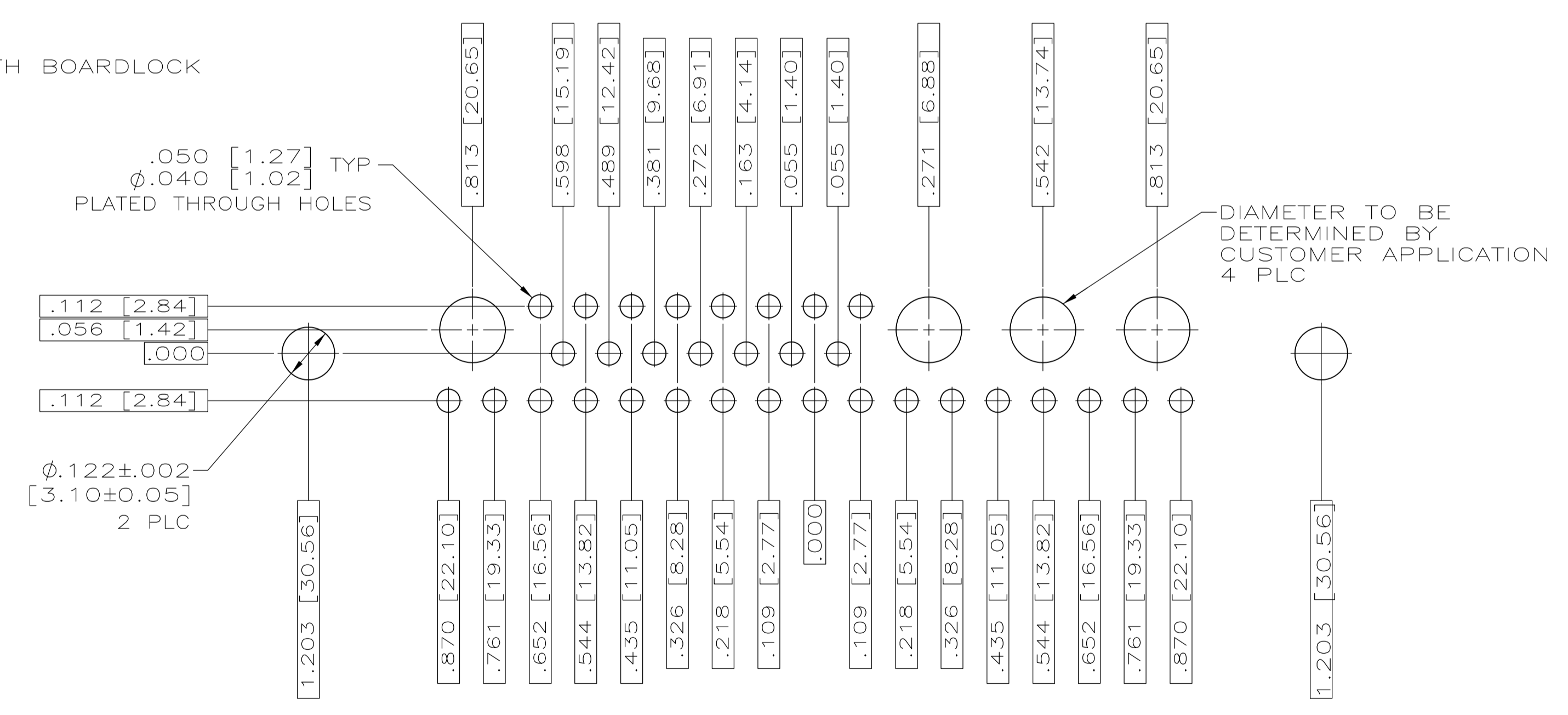
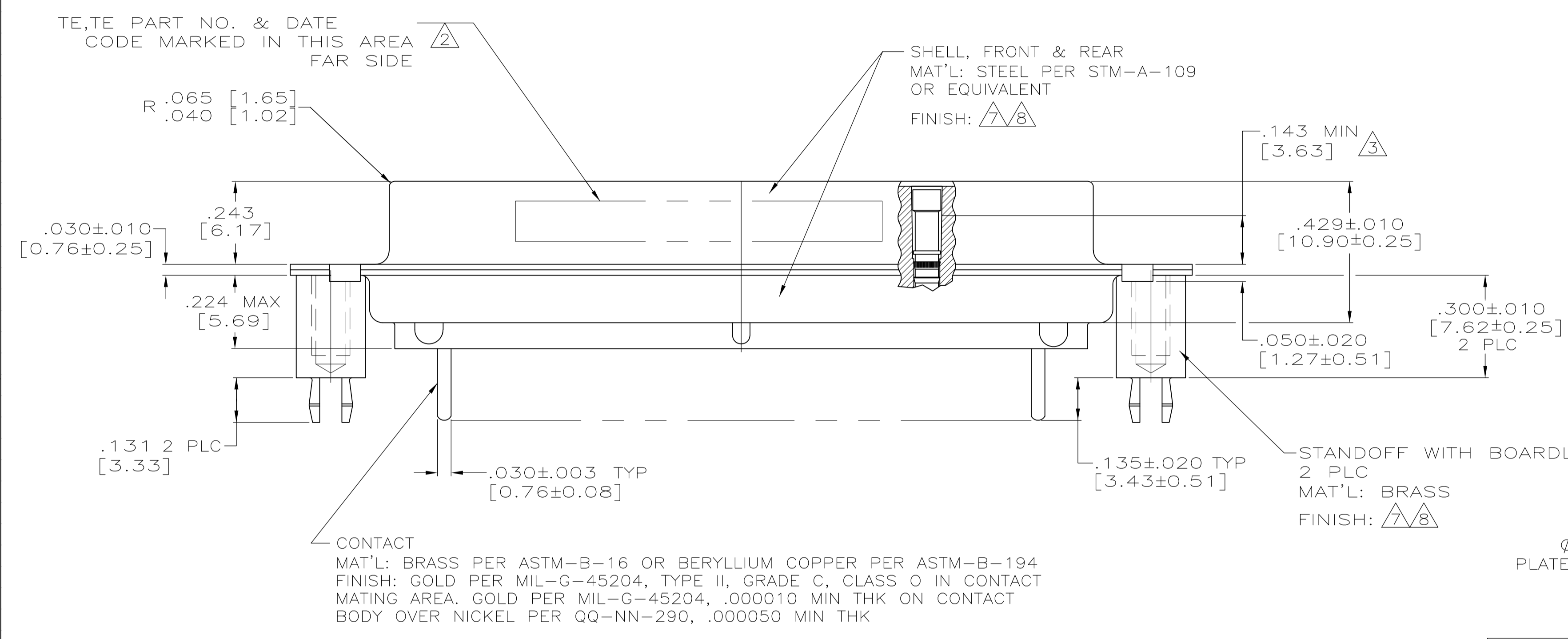


LOC		DIST		REVISIONS			
DF	DO	F	LTR	DESCRIPTION	DATE	DN	APVO
		E		REVISED PER ECO-09-013277	13-04-09	CT	RL



- TRUE POSITION TOLERANCE FOR P.C. BOARD LAYOUT IS .010 [0.25] AT MAX MATERIAL CONDITION. SUGGESTED BOARD THICKNESS IS .125 [3.18].
- MARKED WITH .047 [1.19]-.062 [1.57] HIGH CHARACTERS. FAR SIDE REFERS TO THE WIDE SIDE OF THE KEYSTONE. NEAR SIDE REFERS TO THE NARROW SIDE OF THE KEYSTONE.
- POINT OF ELECTRICAL ENGAGEMENT - AS MEASURED WITH A .0390 [0.991]-.0393 [0.998] DIA SQUARE ENDED TEST PIN.
- DIMENSIONS AND TOLERANCES PER ANSI Y14.5M-1982.
- THIS DRAWING SHALL BE INTERPRETED IN ACCORDANCE WITH APPLICABLE STANDARDS LISTED IN MIL-STD-100.
- BOARDLOCK FOR .062 [1.57] P.C. BOARD.
- FINISH: TIN PER ASTM-B-545 OVER COPPER PER AMS2418.
- FINISH: TIN PER ASTM-B-545 OVER COPPER PER AMS2418.



36C4 RECOMMENDED P.C. BOARD LAYOUT (HOLES FOR POWER CONTACTS TO BE ESTABLISHED BY CUSTOMER)

REMARKS	5-1218807-1
	1218807-1
REMARKS	PART NO.

THIS DRAWING IS A CONTROLLED DOCUMENT.		DIN C.C.THOMAS 28-JUL-00	Tyco Electronics Corporation Harrisburg, PA 17105-3608
DIMENSIONS: INCHES		CHK: D.MILLER 28-JUL-00	
TOLERANCES UNLESS OTHERWISE SPECIFIED:		APVD: D.MILLER 28-JUL-00	NAME: D.MILLER
0 PLC ± .005		PRODUCT SPEC	
1 PLC ± .005		APPLICATION SPEC	SIZE: A1
2 PLC ± .005		RESTRICTED TO	CAGE CODE: 00779
3 PLC ± .005(0.13)		WEIGHT: -	DRAWING NO: 1218807
4 PLC ± .005		CUSTOMER DRAWING	SCALE: 4:1
ANGLES ± 1°		SHEET 1 OF 1	REV E