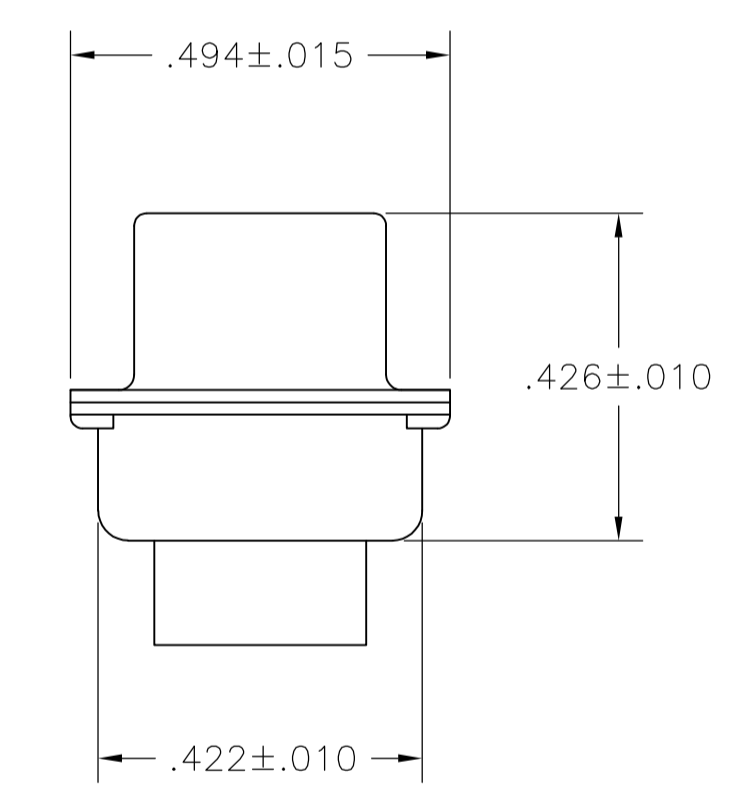
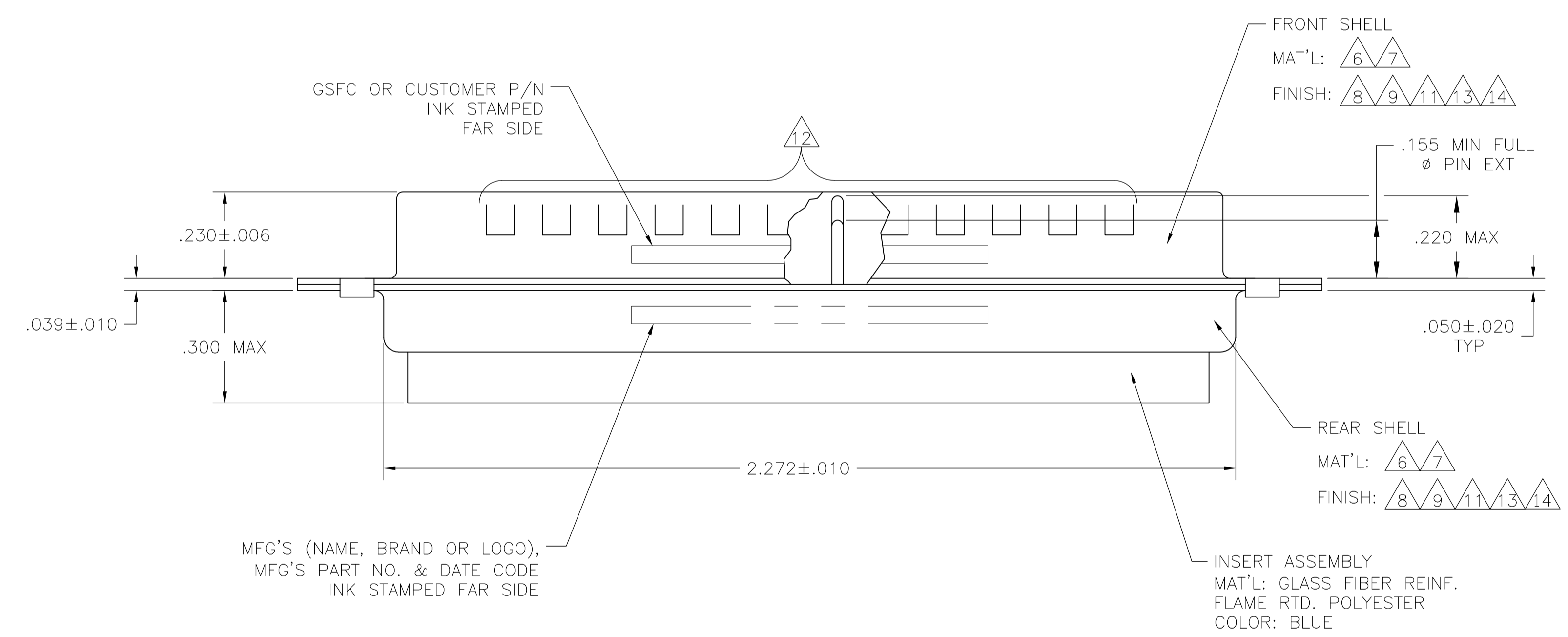
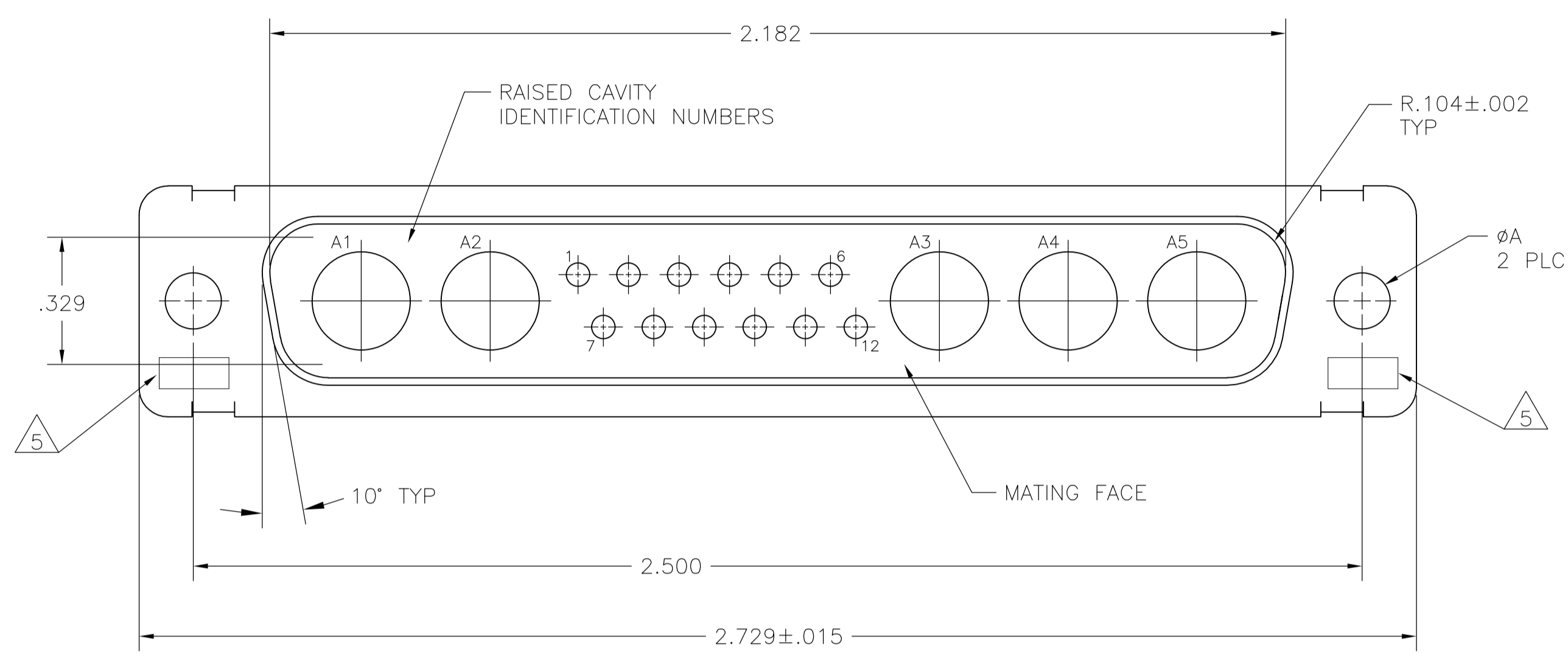


LOC		DIST		REVISIONS			
DF	DO	REV	DESCRIPTION	DATE	BY	APPV	
		K	REVISED PER ECO-09-013174	30-03-09	CT	RL	

- THIS PLUG WILL MATE WITH ANY 17C5, SIZE 4 RECEPTACLE IN AMPLIMITE SERIES.
- MAXIMUM WIRE INSULATION TO BE USED WITH THIS PLUG IS ϕ .068.
- THIS CONNECTOR ACCEPTS (5) POWER 8, OR COAX PIN CONTACTS IN POSITIONS A1 THRU A5, PURCHASED SEPARATELY.
- THIS CONNECTOR ACCEPTS SIZE 20 PIN SIGNAL CONTACTS IN POSITIONS 1 THRU 12, PURCHASED SEPARATELY.
- UL/CSA DESIGNATION STAMPED IN THIS AREA, OPTIONAL.
- STEEL PER ASTM-A-109.
- BRASS PER MIL-C-50 AND ASTM-B-36 UNS NO. C26000.
- CADMIUM PLATED PER QQ-P-416.
- FINISH: GOLD PLATED PER MIL-G-45204 TYPE II, GRADE C, CLASS 1 OVER COPPER PER MIL-C-14550, CLASS IV.
- WESTINGHOUSE PART NO. 97942-645A935H07, INK STAMPED, FAR SIDE.
- FINISH: TIN PER ASTM-B-545, .000200 MIN THK OVER COPPER PER AMS2418 .000100-.000200 THK.
- GROUNDING INDENTS FOR 212514-5 & 5-212514-5 ONLY.
- FINISH: TIN PER ASTM-B-545, .000200 MIN THK OVER COPPER PER AMS2418 .000100-.000200 THK.
- FINISH: ZINC PLATE PER ASTM-B-633 .000200-.000400 THK WITH SUPPLEMENTARY CHROMATE (Cr3+).



6, 12, 13	.120	-	5-212514-5
6, 14	.120	-	5-212514-1
6, 11, 12	.120	-	212514-5
7, 9	.154	311P405-17S-B-15	212514-4
7, 9	.120	311P405-17S-B-12	212514-3
6, 8, 10	.120	-	212514-2
6, 8	.120	-	212514-1
REMARKS	ØA	GSFC P/N	PART NO.

THIS DRAWING IS A CONTROLLED DOCUMENT.

DIMENSIONS: INCHES 	TOLERANCES UNLESS OTHERWISE SPECIFIED: 0 PLC ± - 1 PLC ± - 2 PLC ± - 3 PLC ± .005(0.13) 4 PLC ± - ANGLES ± 0°, 30°	THIS DRAWING IS A CONTROLLED DOCUMENT. C.C. THOMAS 25JAN88 CHK: A. EMADI 26JAN88 APVD: A. EMADI 26JAN88 NAME: Tyco Electronics Corporation Harrisburg, PA 17105-3608 PRODUCT SPEC: PLUG ASSEMBLY APPLICATION SPEC: AMPLIMITE 17C5 SIZE 4, SERIES 109, COAX MIX SIZE: A1 CAGE CODE: 00779C DRAWING NO: 212514 WEIGHT: - CUSTOMER DRAWING	Tyco Electronics Corporation Harrisburg, PA 17105-3608 NAME: PLUG ASSEMBLY AMPLIMITE 17C5 SIZE 4, SERIES 109, COAX MIX SCALE: 4:1 SHEET: 1 OF 1 REV: K
---------------------------	--	--	---