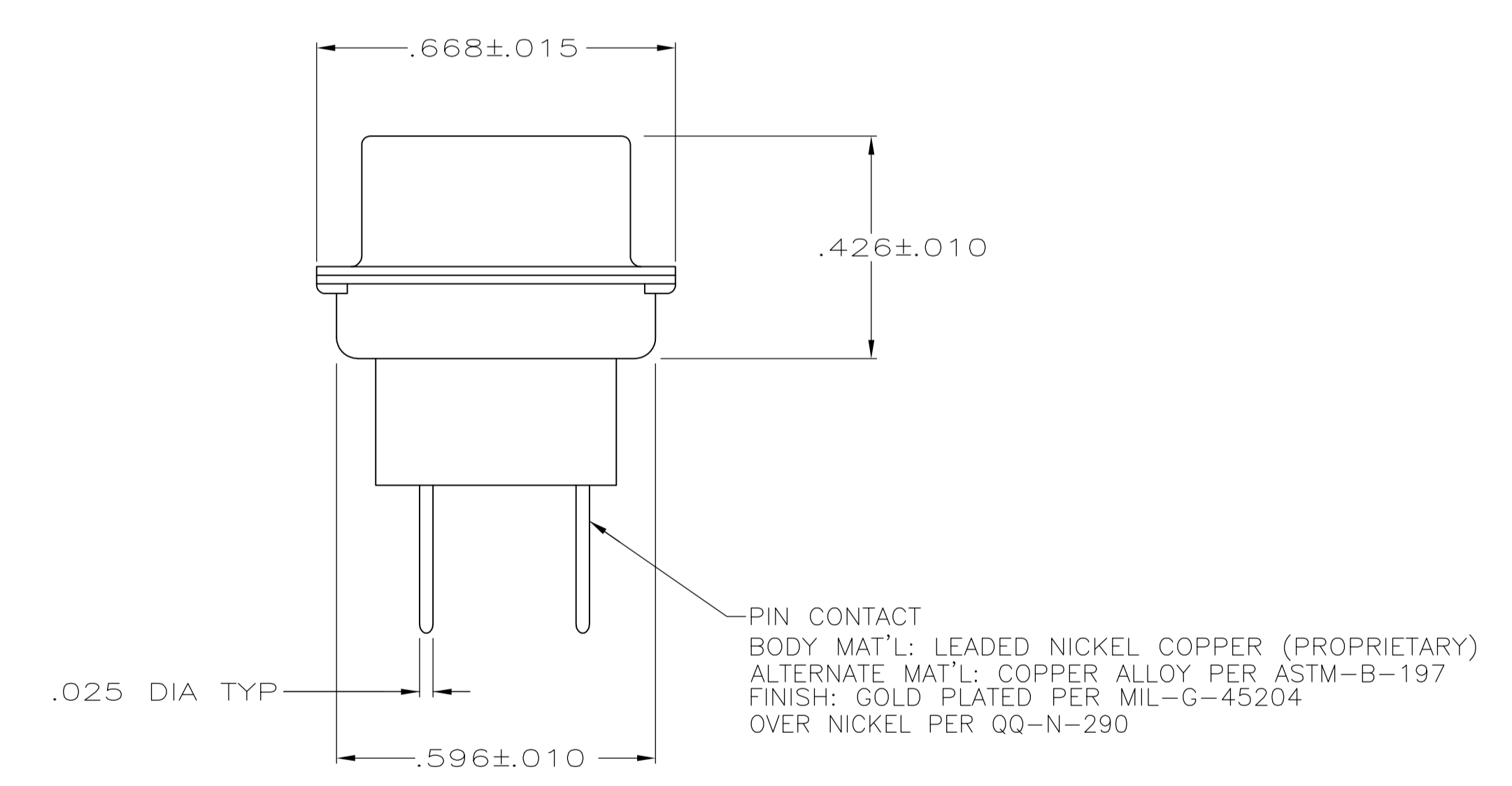
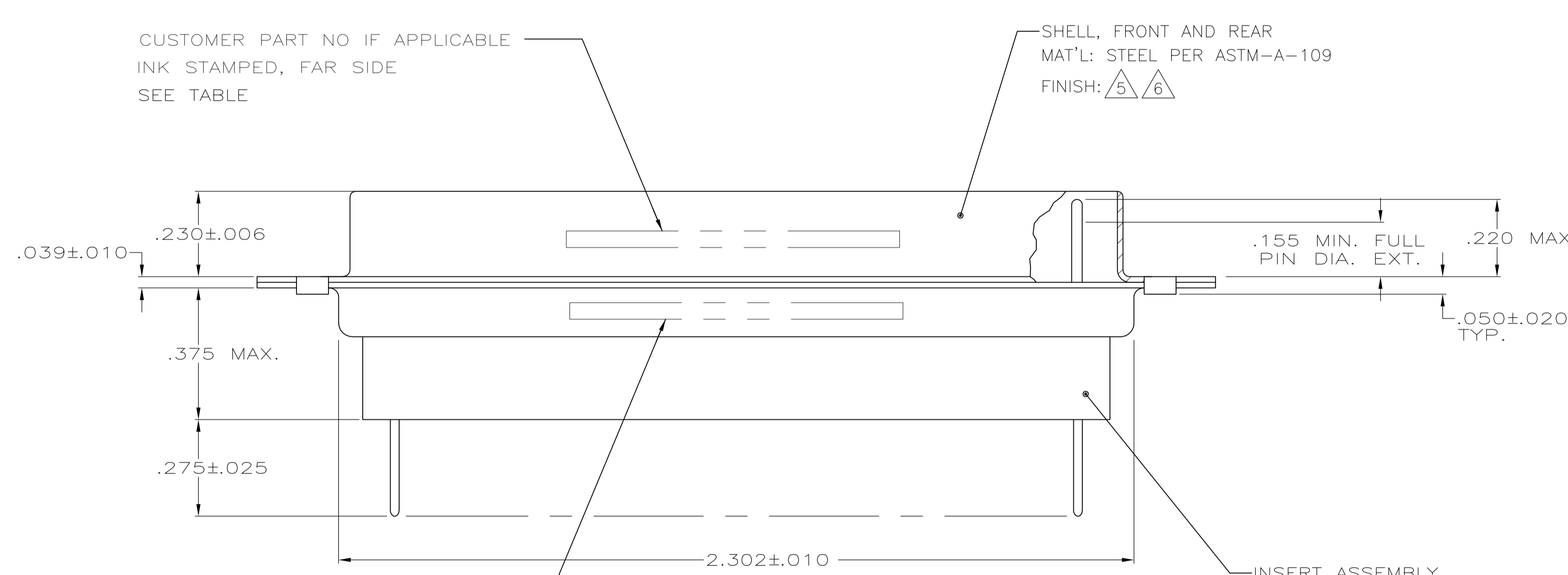


RECOMMENDED P.C. BOARD LAYOUT



- .040 DIA HOLE IS RECOMMENDED FOR P.C. BOARD
- CONNECTOR MATES WITH ANY AMP 104 POSN RECEPTACLE
- REPLACEMENT CONTACT AMP# 207683-8
- UL/CSA DESIGNATION STAMPED IN THIS AREA, OPTIONAL.
- FINISH: CADMIUM PER QQ-P-416
- FINISH: ZINC PLATED PER ASTM-B-633, .000200-.000400 THK WITH SUPPLEMENTARY CHROMATE (Cr3+)

THIS DRAWING IS A CONTROLLED DOCUMENT.		DIN C.C.THOMAS 1-9-88	Tyco Electronics Corporation Harrisburg, Pa 17105-3608
DIMENSIONS: INCHES		CHK F.C.BALLEW III 1-25-88	
TOLERANCES UNLESS OTHERWISE SPECIFIED:		APVD	NAME
0 PLC ± -	1 PLC ± -	PRODUCT SPEC	AMPLIMITE 104 POSN. PLUG ASSY., W/ LOADED POSTED CONTACTS, SIZE 6, SERIES 90
2 PLC ± -	3 PLC ± .005	APPLICATION SPEC	SIZE CASE CODE DRAWING NO RESTRICTED TO
4 PLC ± -	ANGLES ± -	FINISH SEE CALLOUTS	WEIGHT A1 00779 C=208871
MATERIAL SEE CALLOUTS		FINISH SEE CALLOUTS	CUSTOMER DRAWING SCALE 4:1 SHEET 1 OF 1 REV L